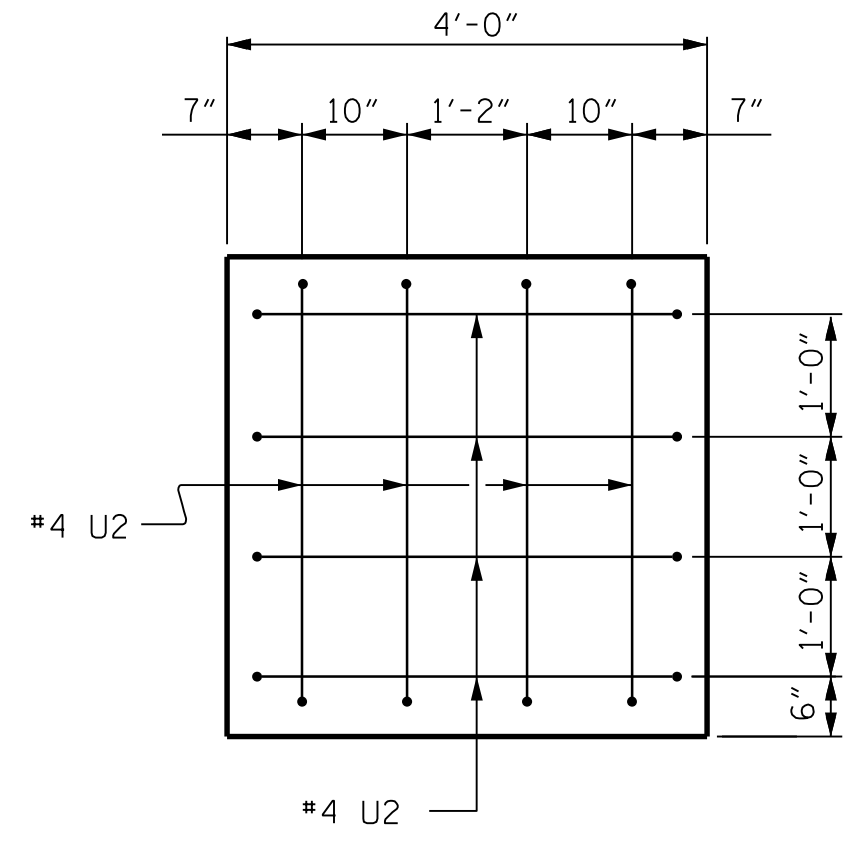
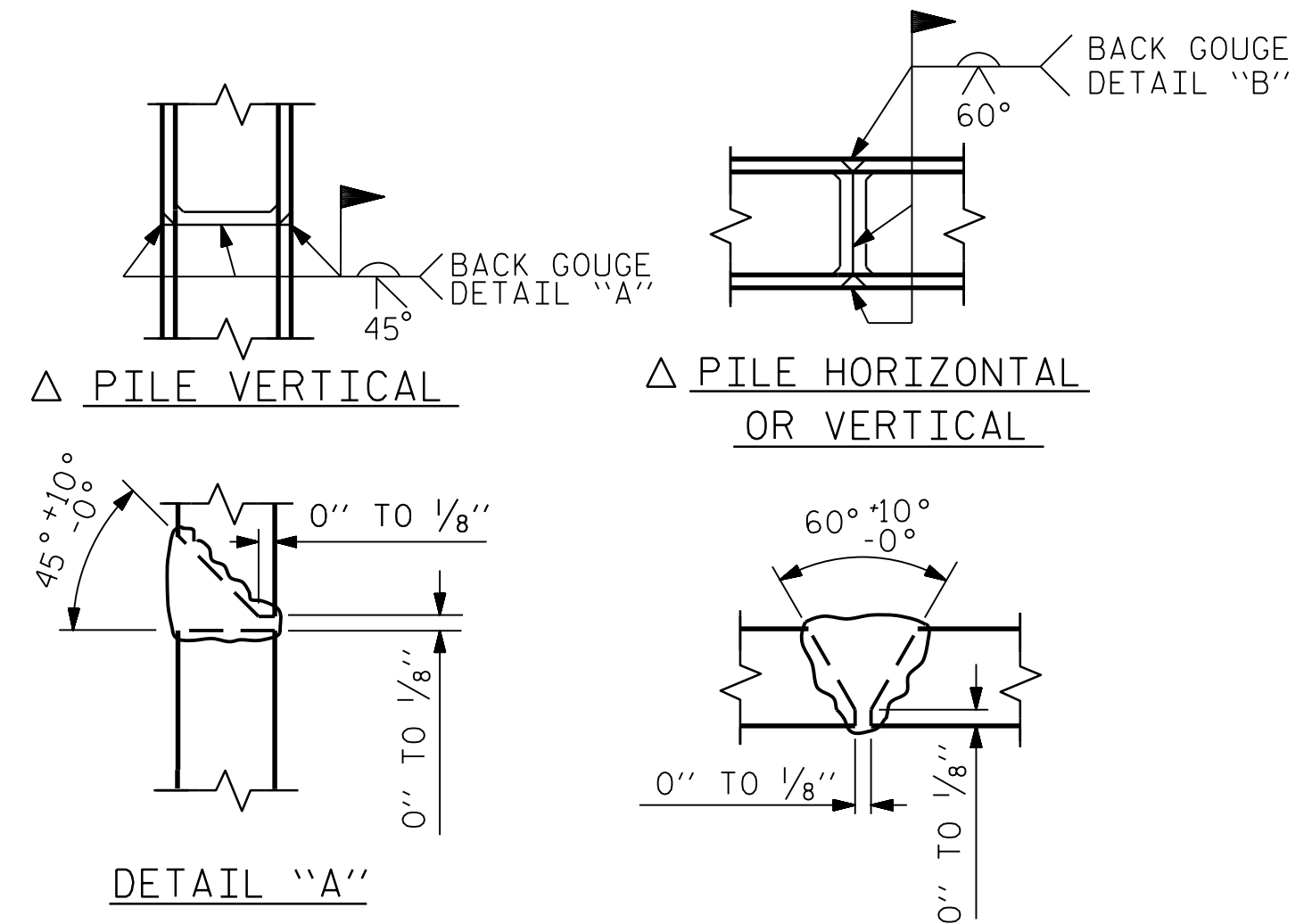


SECTION A-A

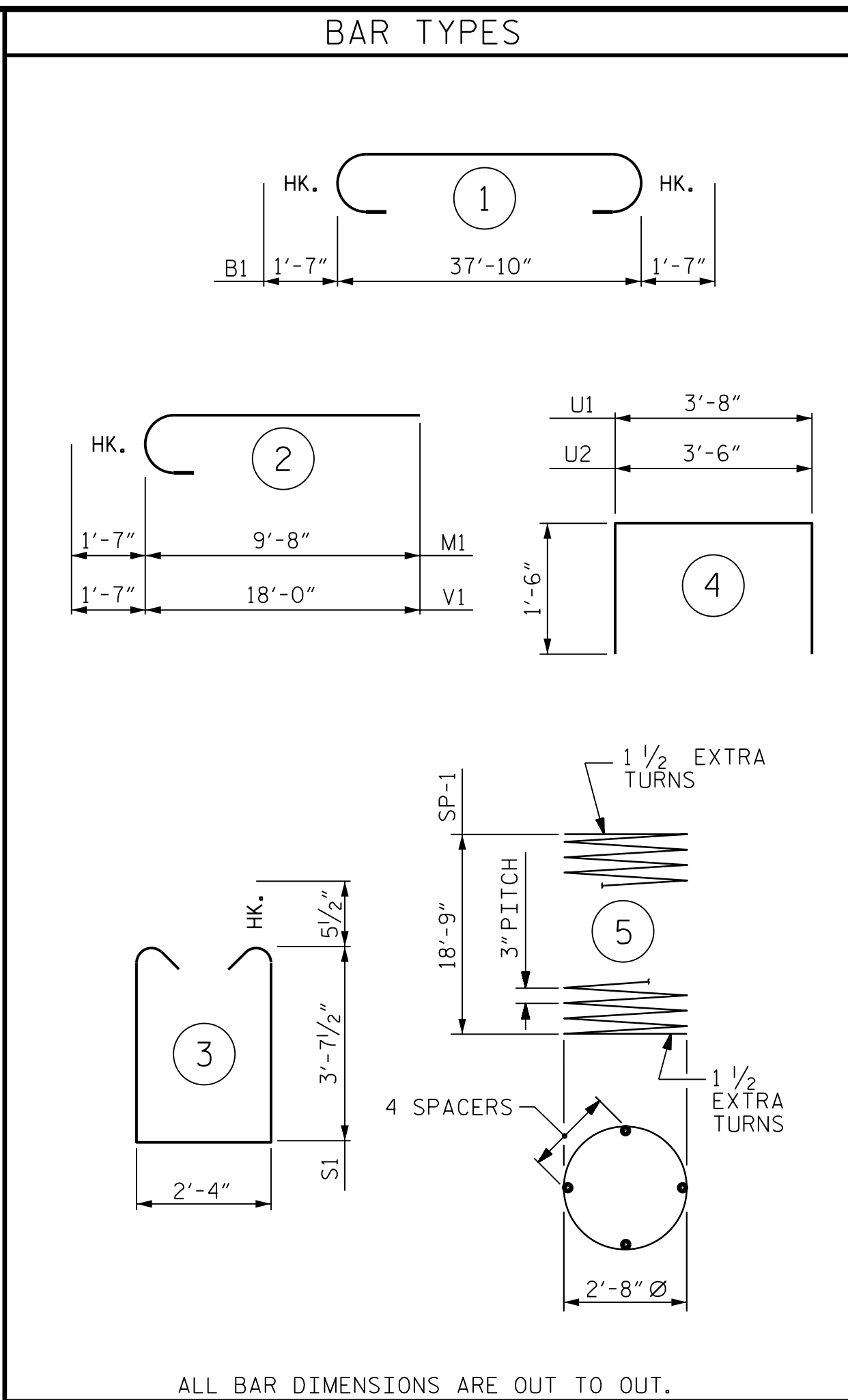


VIEW X-X



PILE SPLICE DETAILS

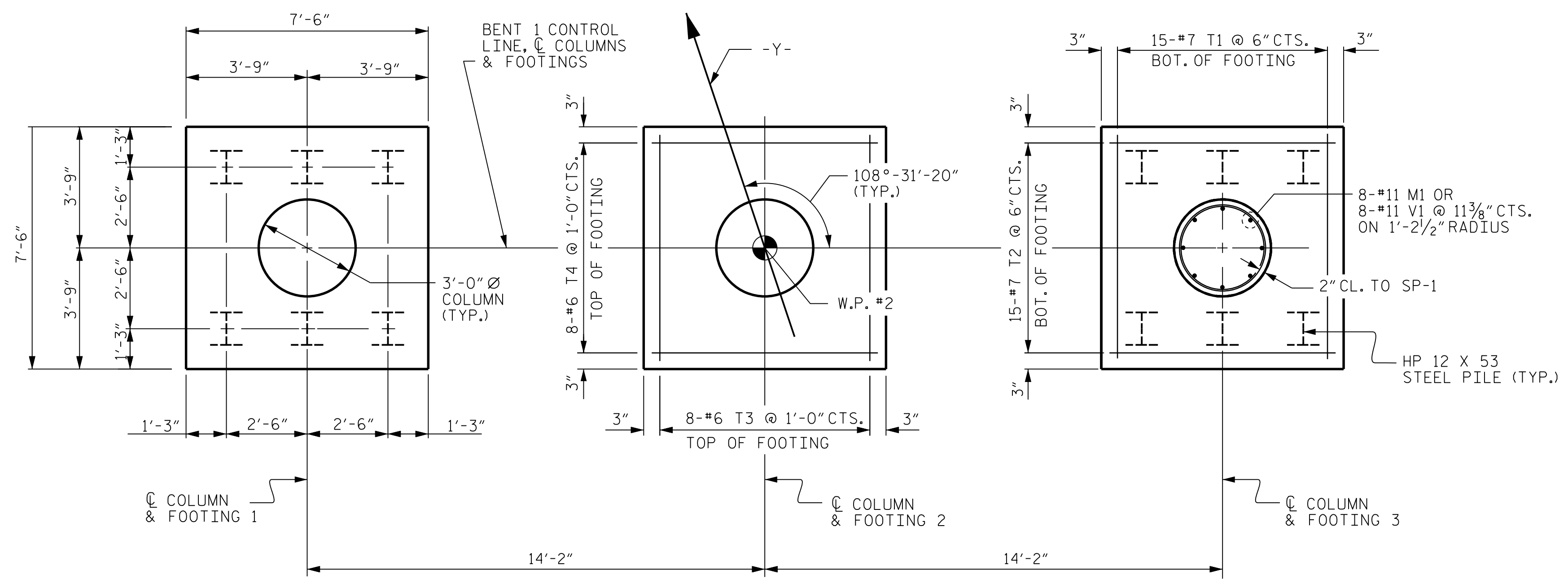
△ POSITION OF PILE DURING WELDING.



ALL BAR DIMENSIONS ARE OUT TO OUT.

BILL OF MATERIAL					
BENT 1					
BAR	NO.	SIZE	TYPE	LENGTH	WEIGHT
B1	6	#11	1	41'-0"	1307
B2	6	#11	STR	38'-0"	1211
B3	8	#5	STR	38'-0"	317
M1	24	#11	2	11'-3"	1435
S1	72	#5	3	10'-6"	789
T1	45	#7	STR	7'-2"	659
T2	45	#7	STR	7'-2"	659
T3	24	#6	STR	7'-2"	258
T4	24	#6	STR	7'-2"	258
U1	32	#4	4	6'-8"	143
U2	16	#4	4	6'-6"	69
V1	24	#11	2	19'-7"	2497
REINFORCING STEEL =				8,296 LBS	
SP-1	3	*	5	639'-9"	2001
SPIRAL COLUMN REINFORCING STEEL =				2,001 LBS	
CLASS A CONCRETE:					
POUR #1 (FOOTINGS) =				C.Y.	20.3
POUR #2 (COLUMNS) =				C.Y.	12.4
POUR #3 (CAP) =				C.Y.	23.2
TOTAL CLASS A CONCRETE				C.Y.	55.9
HP 12 X 53 STEEL PILES					
No. 18				LIN. FT.	990
PILE REDRIVES				EA.	9
PILE DRIVING EQUIP. SETUP				EA.	18
FOUNDATION EXCAVATION				LUMP SUM	

* THE SP-1 SPIRAL REINFORCING STEEL SHALL BE W-31 OR D-31 COLD DRAWN WIRE OR #5 PLAIN OR DEFORMED BAR.



PLAN OF FOOTINGS

REINFORCING STEEL AND DIMENSIONS ARE TYPICAL FOR EACH COLUMN AND FOOTING

PROJECT NO. R-5752
ROBESON COUNTY
 STATION: 30+39.23 -Y-
 SHEET 2 OF 2

STATE OF NORTH CAROLINA DEPARTMENT OF TRANSPORTATION RALEIGH					
SUBSTRUCTURE					
BENT 1					
REVISIONS					
NO.	BY:	DATE:	NO.	BY:	DATE:
1			3		
2			4		
SHEET NO. S-22					TOTAL SHEETS 24

CDM Smith
 CDM SMITH
 5400 Glenwood Avenue, Suite 400
 Raleigh, NC 27612-3228
 NC COA No. F-1255

CDM No. _____
 DWG. No. _____

DRAWN BY: A.L. STROUD DATE: 03/17
 CHECKED BY: J.B. TAYLOR DATE: 03/17
 DESIGN ENGINEER: J.B. TAYLOR DATE: 03/17

DOCUMENT NOT CONSIDERED FINAL UNLESS ALL SIGNATURES COMPLETED

NORTH CAROLINA PROFESSIONAL ENGINEER
 SEAL 33698
 JOSHUA B. TAYLOR

DocuSigned by:
 Joshua B. Taylor