

8/17/99

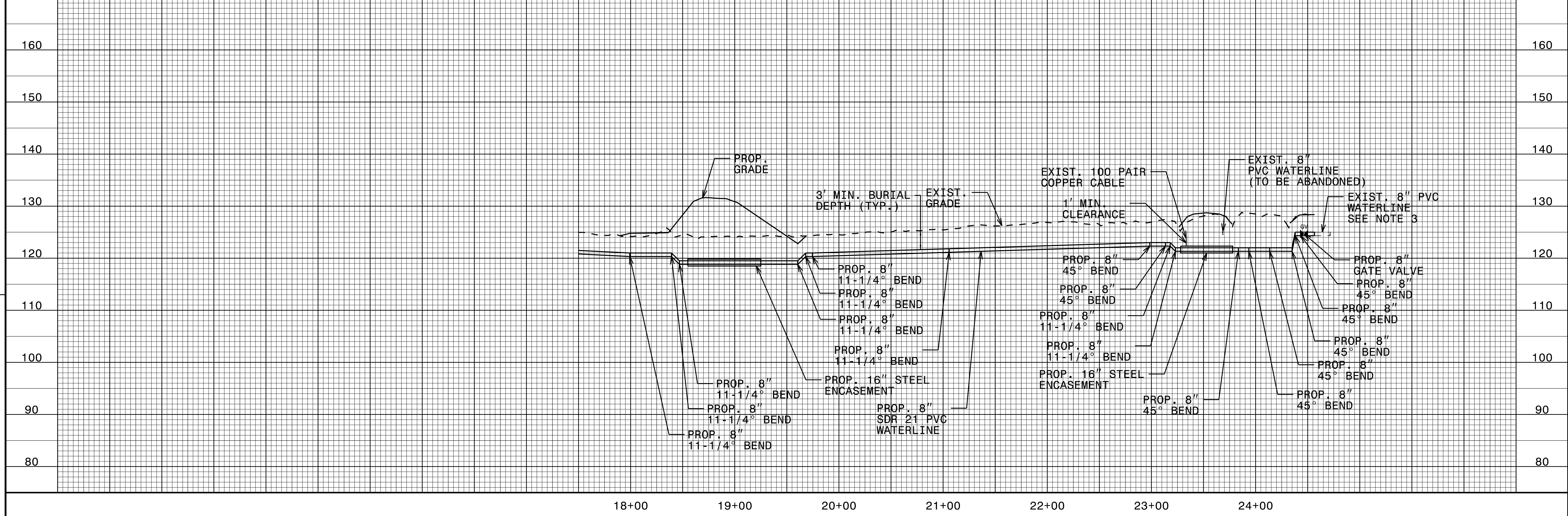
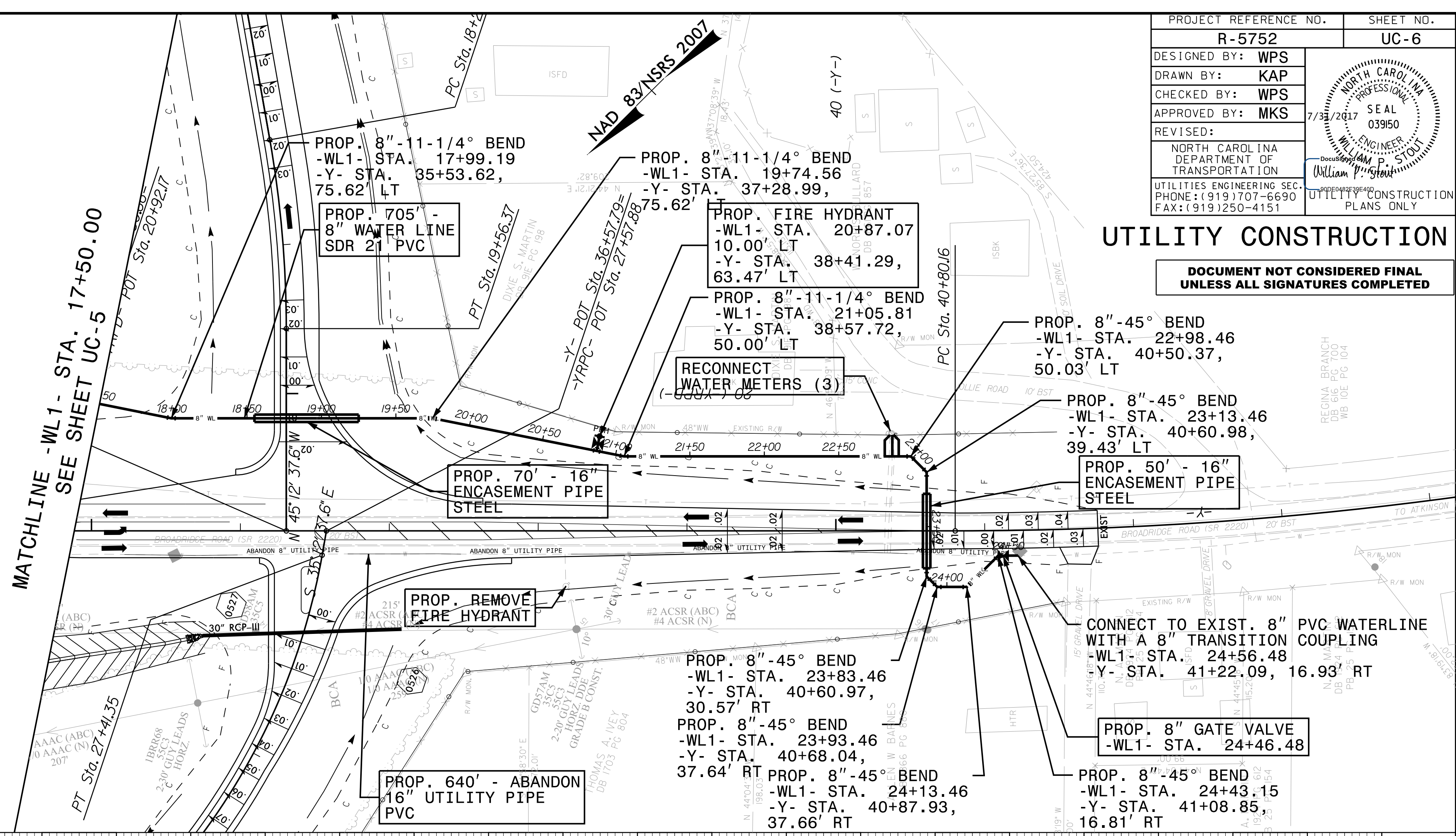
NOTE:

- ELEVATION OF EXISTING 8" WATERLINE AT WATERLINE TIE-IN LOCATIONS IS ASSUMED TO BE 3 FEET BELOW EXISTING GRADE. CONTRACTOR SHALL VERIFY THE LOCATION AND DEPTH OF THE EXISTING WATERLINE PRIOR TO MAKING CONNECTION AND ADJUST PIPE AS NEEDED LEADING UP TO CONNECTION.
- REFER TO THE RESTRAINED JOINT DETAIL ON SHEET UC-3B FOR RESTRAINED JOINT LENGTHS.
- CONTRACTOR SHALL RESTRAIN THE EXISTING WATERLINE BY EXCAVATING AND INSTALLING A BELL AND HARNESS RESTRAINT AROUND EACH PIPE JOINT FOR A MINIMUM LENGTH AS SPECIFIED IN THE RESTRAINED JOINT DETAIL ON SHEET UC-3B. IF THE REQUIRED RESTRAINED LENGTH DOESN'T END AT A PIPE JOINT, CONTRACTOR SHALL INSTALL BELL AND HARNESS RESTRAINT ON THE NEXT PIPE JOINT PAST THE REQUIRED RESTRAINED LENGTH.
- EACH END OF THE PROPOSED ENCASEMENT PIPES SHALL BE PLUGGED IN ACCORDANCE WITH NCDOT STANDARD DRAWING 840.71, CONCRETE AND BRICK PIPE PLUG.
- THE CARRIER PIPE WITHIN THE ENCASEMENT PIPES SHALL BE SUPPORTED WITH THE APPROPRIATE TYPE AND QUANTITY OF STEEL SPACERS APPROVED OR DIRECTED BY THE ENGINEER.

PROJECT REFERENCE NO.	SHEET NO.
R-5752	UC-6
DESIGNED BY: WPS	
DRAWN BY: KAP	
CHECKED BY: WPS	
APPROVED BY: MKS	
REVISED:	
NORTH CAROLINA DEPARTMENT OF TRANSPORTATION UTILITIES ENGINEERING SECTION PHONE: (919) 707-6690 FAX: (919) 250-4151	

UTILITY CONSTRUCTION

DOCUMENT NOT CONSIDERED FINAL UNLESS ALL SIGNATURES COMPLETED



REVISIONS