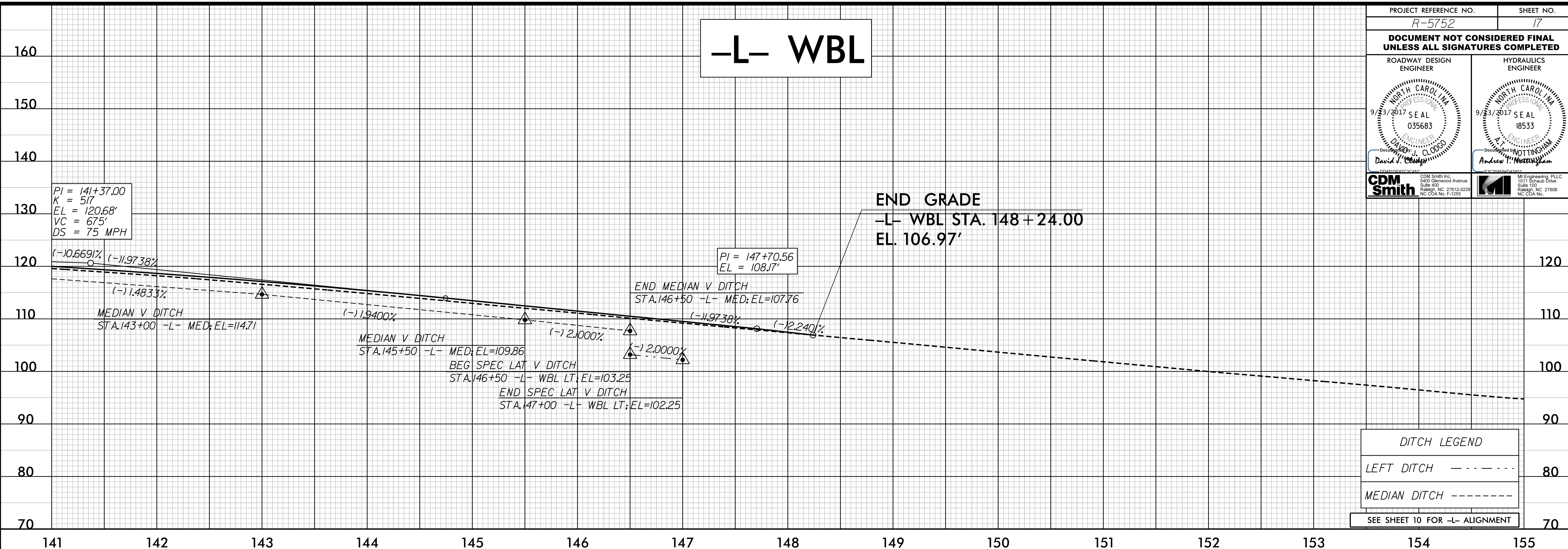


5/28/99

PROJECT REFERENCE NO. R-5752	SHEET NO. 17
DOCUMENT NOT CONSIDERED FINAL UNLESS ALL SIGNATURES COMPLETED	
ROADWAY DESIGN ENGINEER 	HYDRAULICS ENGINEER 

# -L- WBL



$PI = 141+37.00$   
 $K = 517$   
 $EL = 120.68'$   
 $VC = 675'$   
 $DS = 75 \text{ MPH}$

$PI = 147+70.56$   
 $EL = 108.17'$

**END GRADE**  
 -L- WBL STA. 148 + 24.00  
 EL. 106.97'

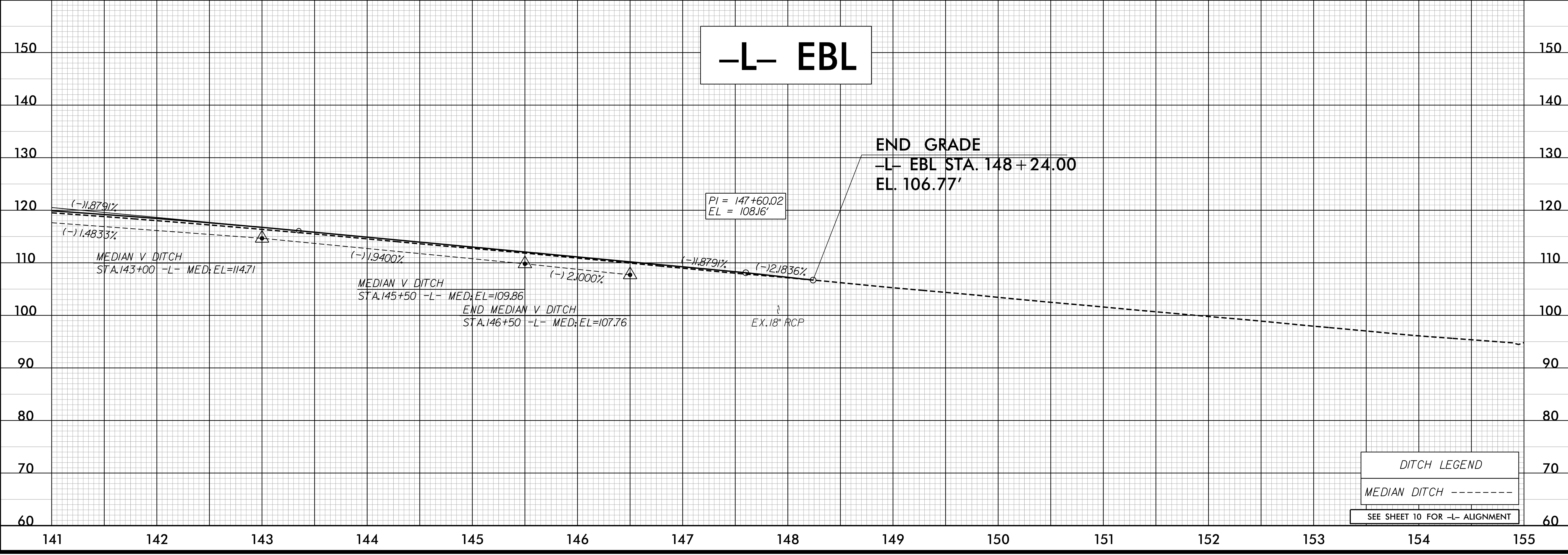
**DITCH LEGEND**

LEFT DITCH - - - - -

MEDIAN DITCH - - - - -

SEE SHEET 10 FOR -L- ALIGNMENT

# -L- EBL



$PI = 147+60.02$   
 $EL = 108.16'$

**END GRADE**  
 -L- EBL STA. 148 + 24.00  
 EL. 106.77'

**DITCH LEGEND**

MEDIAN DITCH - - - - -

SEE SHEET 10 FOR -L- ALIGNMENT

invgrid\_exp.dwg  
11/25/00 11:50:30 AM  
11/25/00 11:50:30 AM