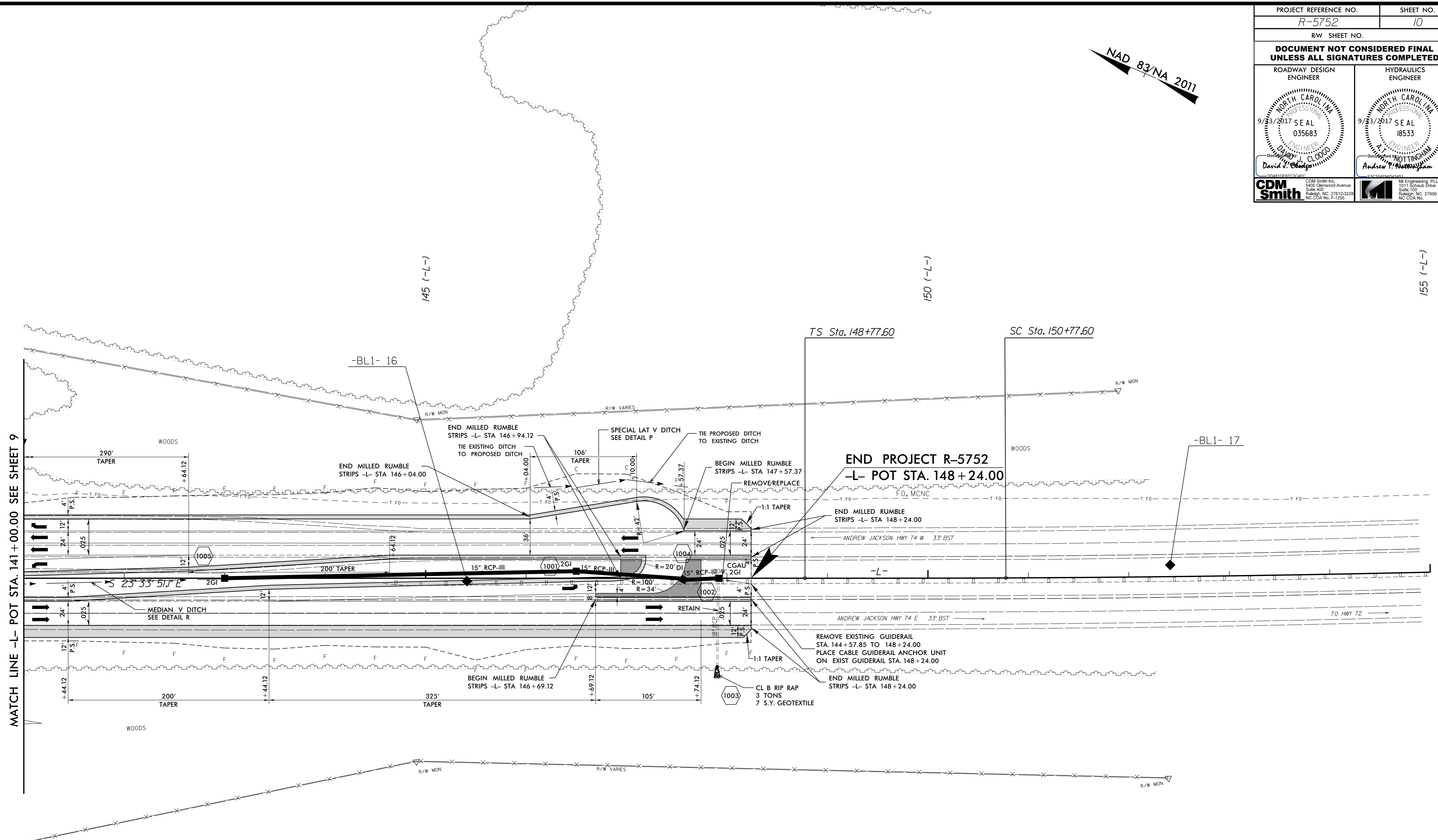


5/14/99

PROJECT REFERENCE NO. <i>R-5752</i>	SHEET NO. <i>10</i>
R/W SHEET NO.	
DOCUMENT NOT CONSIDERED FINAL UNLESS ALL SIGNATURES COMPLETED	
ROADWAY DESIGN ENGINEER	HYDRAULICS ENGINEER
<small>CDM Smith Inc. 5400 Glenwood Avenue Suite 400 Raleigh, NC 27612-3228 NC CDA No. P-1255</small>	<small>M Engineering, PLLC 3115 Schmitt Drive Suite 100 Raleigh, NC 27608 NC CDA No.</small>

NAD 83/NA 2011



MATCH LINE -L- POT STA. 141+00.00 SEE SHEET 9

-L-	
$PIs Sta 150+10.94$	$PI Sta 159+27.61$
$\theta_s = 0^{\circ}15'00.0''$	$\Delta = 4^{\circ}14'53.3'' (LT)$
$L_s = 200.00'$	$D = 0^{\circ}15'00.0''$
$LT = 133.33'$	$L = 1,699.23'$
$ST = 66.67'$	$T = 850.00'$
	$R = 22,918.00'$
	$e = 0.025$
	$DS = 75 MPH$

Invalid expression used: REFTEXT2_Rdy_psh_10.dgn

SEE SHEET 17 FOR -L- PROFILE
SEE SHEET 2B-2 FOR ROADWAY
DETAILS