

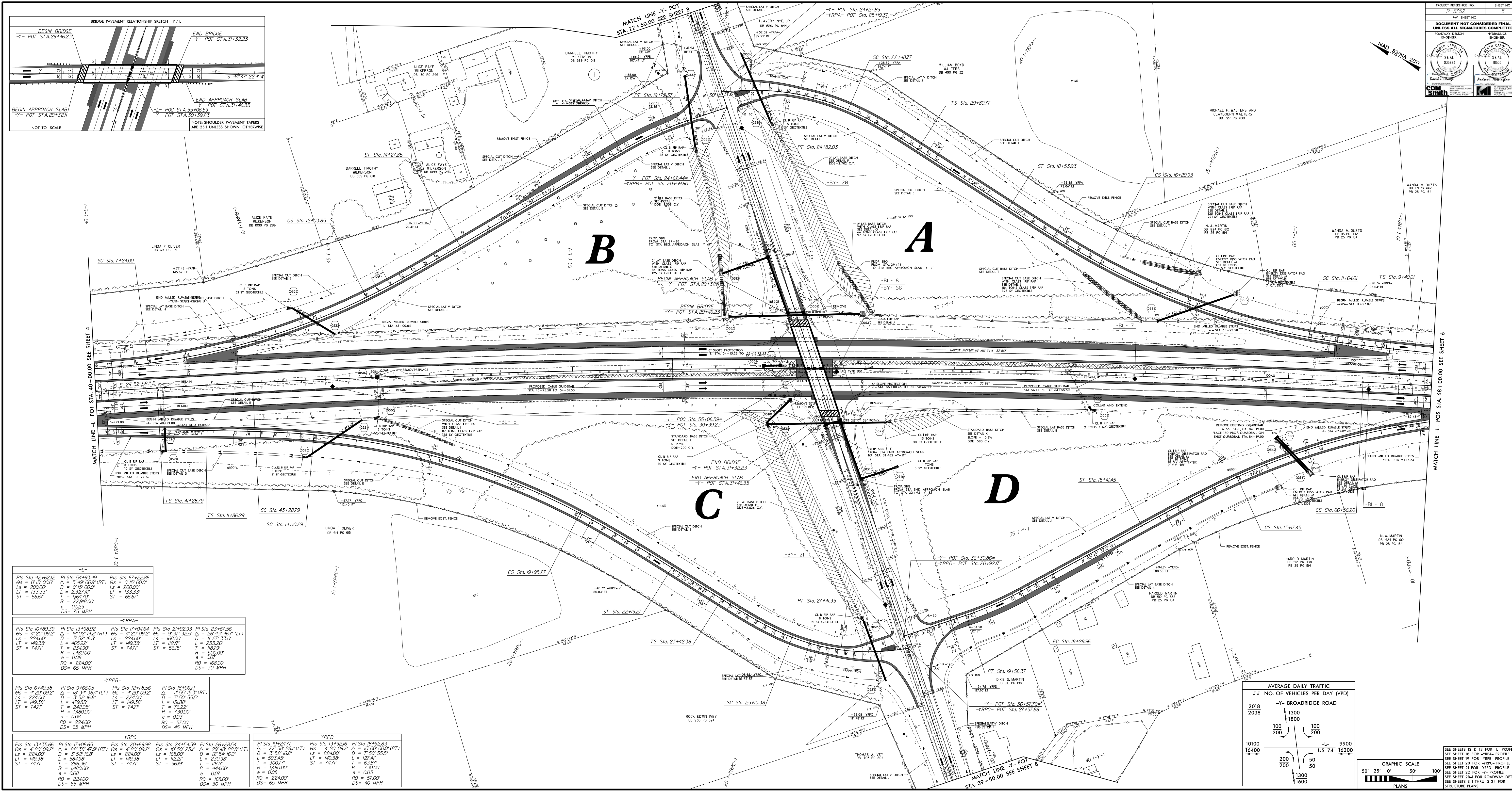
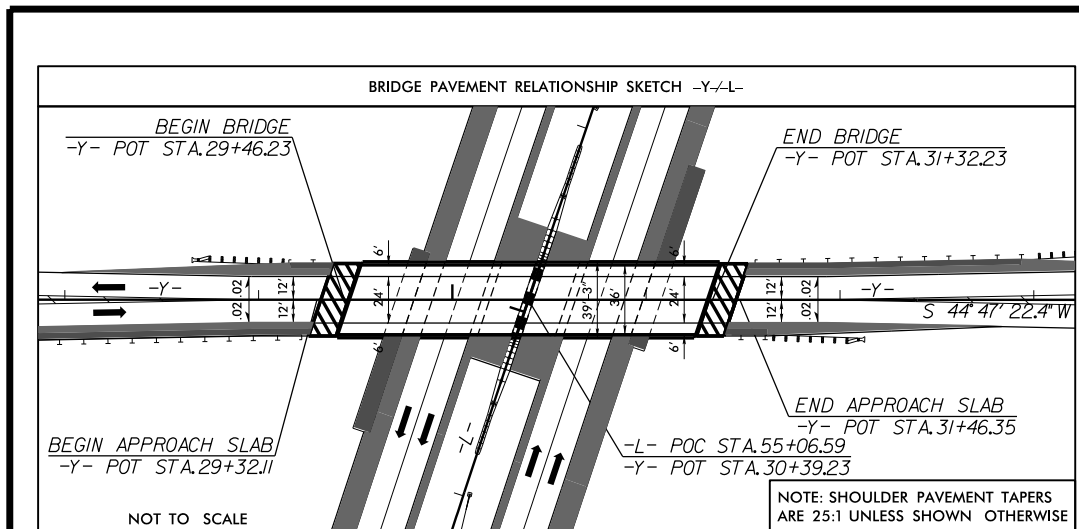
PROJECT REFERENCE NO. R-5752 SHEET NO. 5

DOCUMENT NOT CONSIDERED FINAL UNLESS ALL SIGNATURES COMPLETED

ROADWAY DESIGN ENGINEER: MICHAEL P. WALTERS, DB 133 PC 412, PE 25 PC 54

HYDRAULICS ENGINEER: ANDREW P. HILLMAN, DB 133 PC 412, PE 25 PC 54

CDM Smith



-L-		-YRPA-		-YRFB-		-YRPC-		-YRPP-	
PI Sta 42+62.12	PI Sta 54+93.49	PI Sta 67+22.86	PI Sta 10+89.39	PI Sta 13+98.96	PI Sta 17+04.64	PI Sta 21+92.93	PI Sta 23+67.56	PI Sta 10+24.77	PI Sta 13+92.16
Gs = 0'15" 0.00'	Gs = 5'49" 06.57' (RT)	Gs = 0'15" 0.00'	Gs = 4'30" 09.22'	Gs = 10'02" 14.25' (RT)	Gs = 4'20" 09.22'	Gs = 3'35" 32.53'	Gs = 25'43" 46.71' (LT)	Gs = 3'52" 16.81' (LT)	Gs = 4'30" 09.22'
Ls = 200.00'	D = 0'15" 0.00'	Ls = 200.00'	Ls = 224.00'	D = 3'52" 16.81'	Ls = 224.00'	Ls = 168.00'	D = 17'27" 33.07'	D = 3'52" 16.81' (LT)	D = 4'30" 09.22'
LT = 133.33'	T = 164.47'	LT = 133.33'	T = 149.39'	LT = 133.33'	T = 164.47'	LT = 121.01'	T = 233.26'	LT = 133.33'	T = 164.47'
ST = 66.67'	e = 0.025	ST = 66.67'	ST = 74.71'	e = 0.025	ST = 74.71'	ST = 56.15'	R = 100.00'	e = 0.025	ST = 74.71'
DS = 75 MPH		DS = 75 MPH	RO = 224.00'	RO = 168.00'	RO = 168.00'	RO = 168.00'	DS = 30 MPH	RO = 224.00'	DS = 65 MPH
			DS = 65 MPH	DS = 65 MPH	DS = 65 MPH	DS = 30 MPH		DS = 65 MPH	DS = 45 MPH

