

SURVEY CONTROL SHEET R-5752

TYPE	STATION	NORTH	EAST
POT	10+00.00	277551.5688	1998014.1743
PC	10+57.97	277501.2810	1998043.0073
PT	13+82.91	277221.0364	1998207.4681
PC	14+82.02	277136.0733	1998258.4880
PT	17+91.63	276869.1264	1998415.3160
TS	41+28.79	274842.6959	1998579.7556
SC	43+28.79	274869.1420	1998679.1486
CS	66+56.20	272591.2260	2000725.2992
ST	68+56.20	272408.0201	2000805.5209
TS	148+77.60	265955.4951	2004012.2893
SC	150+77.60	264872.2892	2004092.5111
CS	167+76.83	263344.5805	2004835.5876
ST	169+76.83	263168.3678	2004930.1869
POT	170+14.05	263135.6829	2004947.8391

TYPE	STATION	NORTH	EAST
POT	10+00.00	275166.9880	2001536.1238
PC	10+73.87	275096.0555	2001518.5646
PT	15+33.97	274699.1559	2001295.4090
PC	40+80.16	272892.1235	1999501.6026
PT	45+71.22	272811.9915	1999191.9888
POT	46+54.81	272442.3135	1999145.8080

TYPE	STATION	NORTH	EAST
POT	10+00.00	266386.9800	2004323.9622
PC	16+90.17	266046.5544	2003723.5883
PT	19+08.89	265935.0781	2003635.4363
POT	26+08.80	265566.8572	2002940.2864

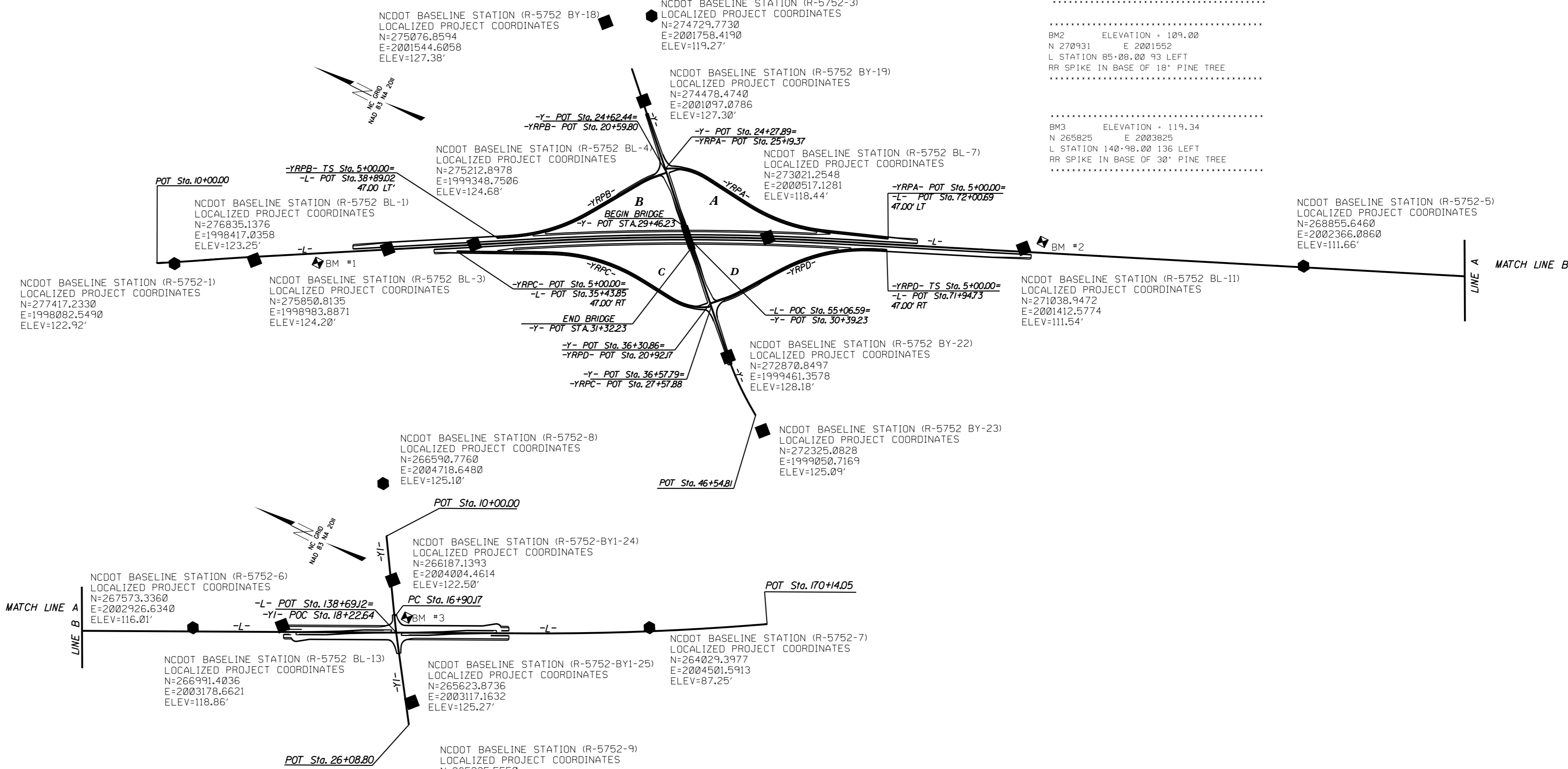
TYPE	STATION	NORTH	EAST
POT	5+00.00	272111.0444	2000986.3212
TS	9+48.01	272523.0208	2000831.7633
SC	11+64.01	272734.6112	2000758.4151
CS	16+29.93	273194.9399	2000700.1832
ST	18+53.93	273418.1300	2000718.5315
TS	20+80.77	273643.6611	2000742.8125
SC	22+48.77	273811.2301	2000751.4100
PT	24+82.03	274032.4619	2000684.4239
POT	25+19.37	274064.7356	2000665.6322

TYPE	STATION	NORTH	EAST
TS	5+00.00	275074.0042	1999501.0468
SC	7+24.00	274882.7111	199917.4830
CS	12+03.85	274536.2005	1999446.3906
ST	14+27.85	274409.9579	2000131.3590
PC	18+28.49	274196.8679	2000461.1416
PT	19+72.37	274101.8089	2000579.2482
POT	20+59.80	274040.2176	2000641.2936

TYPE	STATION	NORTH	EAST
POT	5+00.00	275326.4513	1999247.5701
TS	11+86.29	274709.0076	1999547.1556
SC	14+10.29	274505.1270	1999639.8011
CS	19+95.27	273933.1729	1999742.9549
ST	22+19.27	273709.7728	1999727.3709
TS	23+42.38	273587.2183	1999715.7092
SC	25+10.38	273419.5183	1999710.3718
PT	27+41.35	273205.3840	1999789.6327
POT	27+57.88	273191.8784	1999799.1635

TYPE	STATION	NORTH	EAST
TS	5+00.00	272078.9293	2000897.7766
SC	7+24.00	272281.8750	2000803.1008
CS	13+17.45	272737.4708	2000429.0390
ST	15+41.45	272869.8425	2000248.4862
PC	18+28.96	273033.8864	2000012.2861
PT	19+56.37	273115.3209	1999914.5092
POT	20+92.17	273210.9897	1999818.1350

BL POINT	DESC.	NORTH	EAST	ELEVATION	L STATION	OFFSET	BY1 POINT	DESC.	NORTH	EAST	ELEVATION	Y1 STATION	OFFSET		
101	R5752	GPS-1	277417.2330	1998862.5490	122.92	11+58.58	7.77 RT	24	R5752	BY1-24	266187.1393	2004004.4614	122.50	13+76.50	16.25 LT
1	R5752	BL-1	276835.1376	1998417.0358	123.25	18+21.95	15.44 RT	75	R5752	BL-15	265927.3940	2003624.5710	120.90	18+36.45	52.97 LT
2	R5752	BL-2	276354.7934	1998693.2301	123.59	23+76.04	15.29 RT	25	R5752	BY1-25	265623.8736	2003117.1632	125.27	24+28.32	44.61 LT
3	R5752	BL-3	275850.8135	1998983.8871	124.20	29+57.83	14.37 RT								
4	R5752	BL-4	275212.8978	1999348.7506	124.68	36+92.72	15.85 RT								
5	R5752	BL-5	274515.6918	1999747.6588	124.94	44+96.16	15.71 RT								
6	R5752	BL-6	273866.0980	2000249.6520	121.62	55+53.22	6.32 RT								
7	R5752	BL-7	273021.2548	2000517.1281	118.44	61+78.45	11.84 RT								
8	R5752	BL-8	272573.6708	2000717.3293	116.23	66+69.05	14.38 RT								
9	R5752	BL-9	272112.5861	2000943.8279	113.34	71+82.29	8.67 LT								
10	R5752	BL-10	271574.3506	2001178.8440	111.69	77+64.59	9.91 LT								
11	R5752	BL-11	271038.9472	2001412.5774	111.54	83+53.79	9.11 LT								
12	R5752	BL-12	270535.0824	2001632.7962	111.57	89+03.68	9.54 LT								
BL1								BY							
								18	R5752	BY-18	275076.8594	2001544.6058	127.38	10+85.03	29.98 LT
								19	R5752	BY-19	274478.4740	2001097.0786	127.30	18+30.31	14.72 LT
								20	R5752	BY-20	273993.3321	2000816.7112	124.76	25+13.03	15.58 LT
								66	R5752	BL-6	273586.0980	2000249.6520	121.62	30+60.64	41.98 LT
								21	R5752	BY-21	273275.8164	1999859.1027	124.85	35+55.99	16.68 RT
								22	R5752	BY-22	272870.8497	1999461.3578	128.18	41+23.37	13.95 RT
								23	R5752	BY-23	272325.0828	1999050.7169	125.09	OUTSIDE PROJECT LIMITS	



DATUM DESCRIPTION

THE LOCALIZED COORDINATE SYSTEM DEVELOPED FOR THIS PROJECT IS BASED ON THE STATE PLANE COORDINATES ESTABLISHED BY NCDOT FOR MONUMENT "R-5752-5" WITH NAD 83/NA 2011 STATE PLANE GRID COORDINATES OF NORTHING: 268855.6460(ft) EASTING: 2002366.0860(ft) ELEVATION: 111.6600(ft)

THE AVERAGE COMBINED GRID FACTOR USED ON THIS PROJECT (GROUND TO GRID) IS: 0.9999594816

THE N.C. LAMBERT GRID BEARING AND LOCALIZED HORIZONTAL GROUND DISTANCE FROM "R-5752-5" TO L- STATION 10+00.00 IS N29°20'59.24"W 821.93'

ALL LINEAR DIMENSIONS ARE LOCALIZED HORIZONTAL DISTANCES VERTICAL DATUM USED IS NAVD 88

NOTES:

- INDICATES GEODETIC CONTROL MONUMENTS USED OR SET FOR HORIZONTAL AND VERTICAL PROJECT CONTROL BY THE NCDOT LOCATION AND SURVEYS UNIT. PROJECT CONTROL ESTABLISHED USING GNSS (GLOBAL NAVIGATION SATELLITE SYSTEM).
- THE CONTROL DATA FOR THIS PROJECT CAN BE FOUND ELECTRONICALLY BY SELECTING PROJECT CONTROL DATA AT: [HTTPS://CONNECT.NCDOT.GOV/RESOURCES/LOCATION](https://connect.ncdot.gov/resources/location)
- THE FILES TO BE FOUND ARE AS FOLLOWS: R-5752_LS_CONTROL.TXT
- SITE CALIBRATION INFORMATION HAS NOT BEEN PROVIDED FOR THIS PROJECT. IF FURTHER INFORMATION IS NEEDED, PLEASE CONTACT THE LOCATION AND SURVEYS UNIT.

NOTE: DRAWING NOT TO SCALE

Invalid expression: H:\SFR\CONTR\1.dgn