

**This electronic collection of documents is provided
for the convenience of the user
and is Not a Certified Document –**

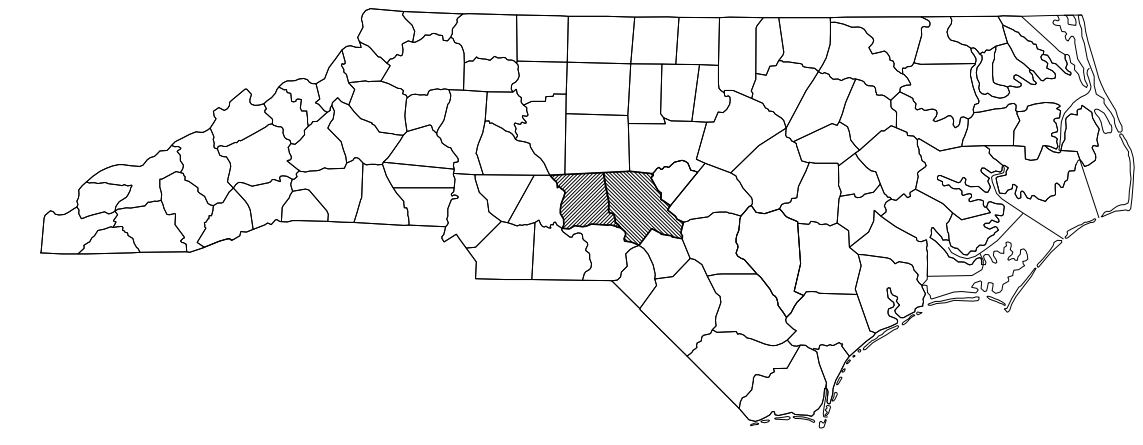
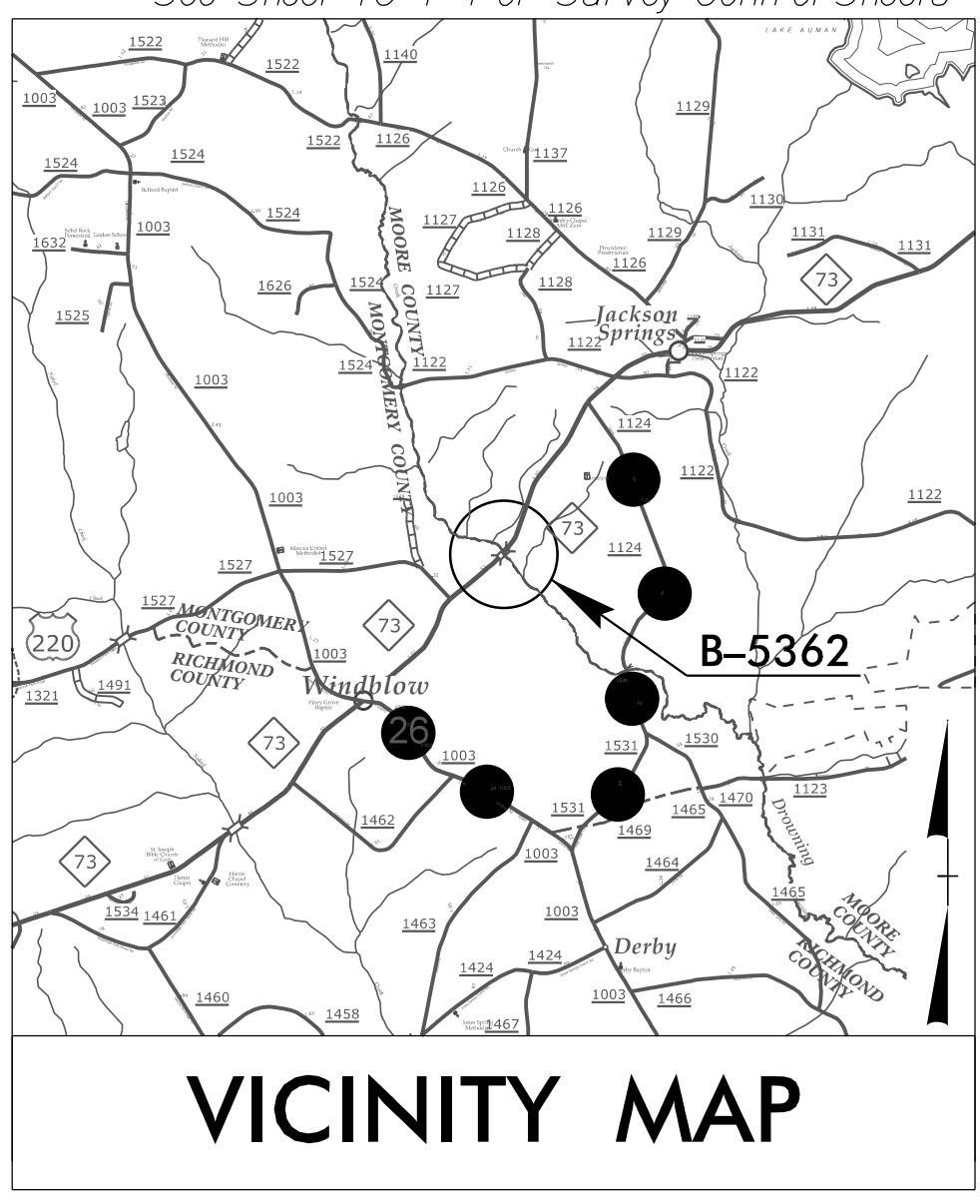
**The documents contained herein were originally issued
and sealed by the individuals whose names and license
numbers appear on each page, on the dates appearing
with their signature on that page.**

**This file or an individual page
shall not be considered a certified document.**

09/08/99

TIP PROJECT: B-5362

See Sheet 1A For Index of Sheets
See Sheet 1B For Conventional Symbols
See Sheet 1C-1 For Survey Control Sheets



STATE OF NORTH CAROLINA
DIVISION OF HIGHWAYS

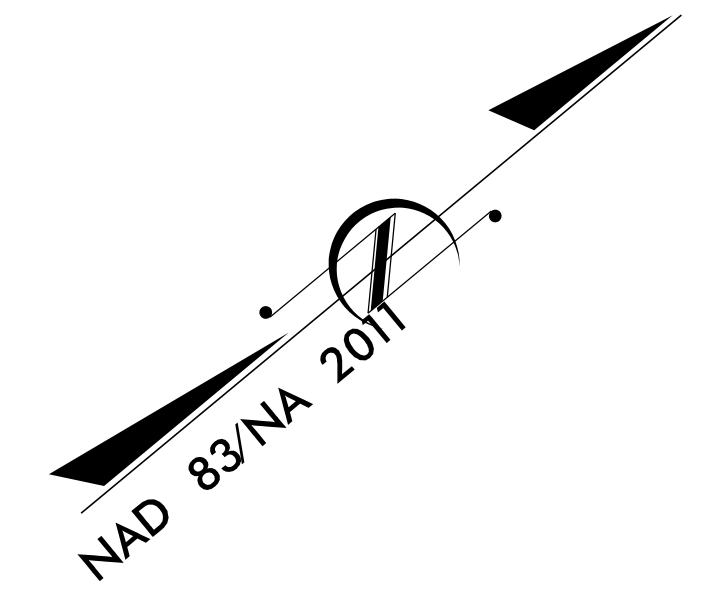
**UTILITIES BY OTHERS PLANS
MONTGOMERY / MOORE COUNTIES**

LOCATION: BRIDGE NO. 53 OVER DROWNING CREEK ON NC 73

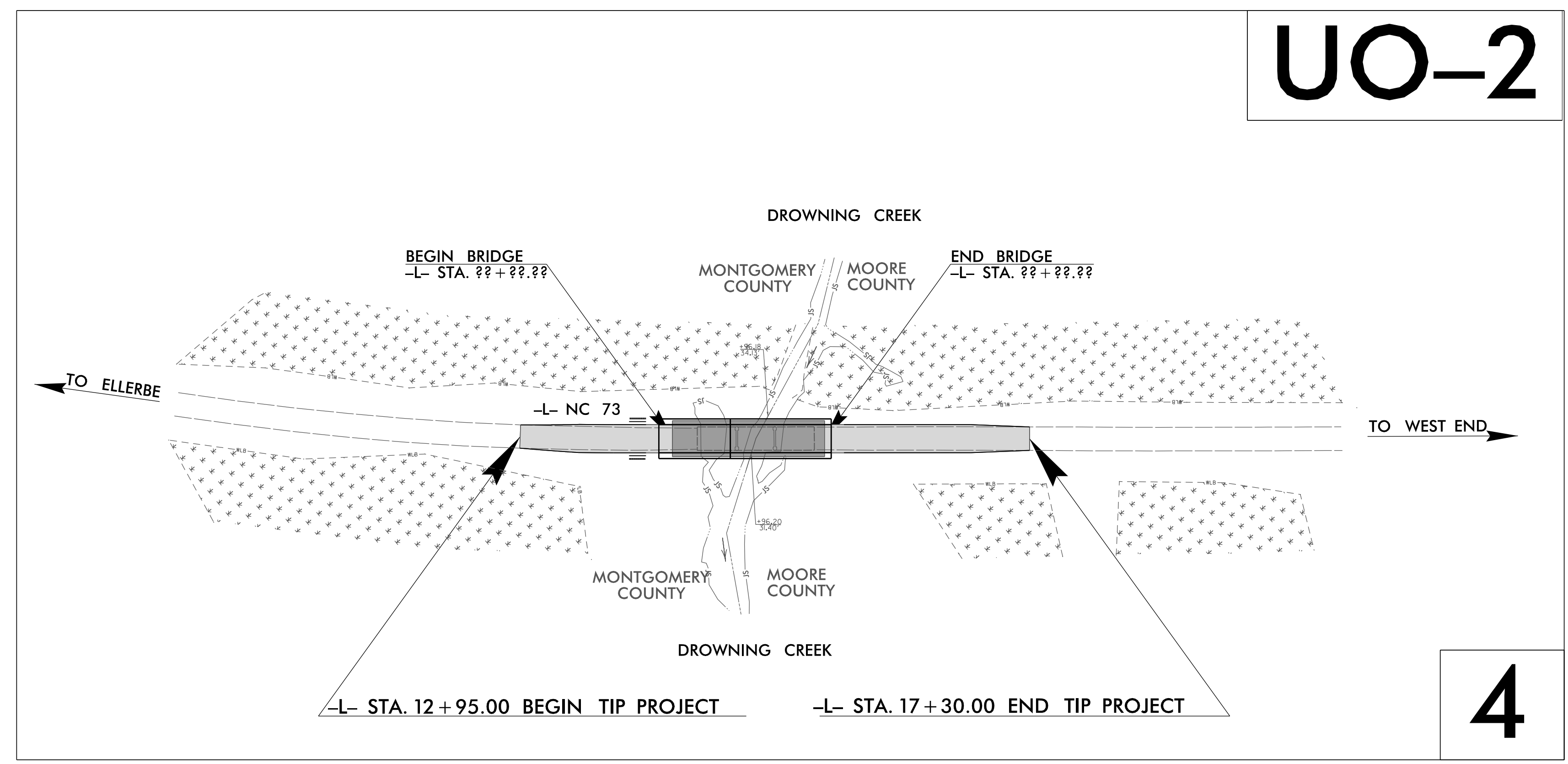
TYPE OF WORK: POWER AND TELEPHONE RELOCATION

T.I.P. NO.	SHEET NO.
B-5362	UO-1

NOTE:
ALL UTILITY WORK SHOWN ON THIS SHEET IS DONE BY OTHERS.
NO PAYMENT WILL BE MADE TO THE CONTRACTOR FOR UTILITY WORK SHOWN ON THIS SHEET.



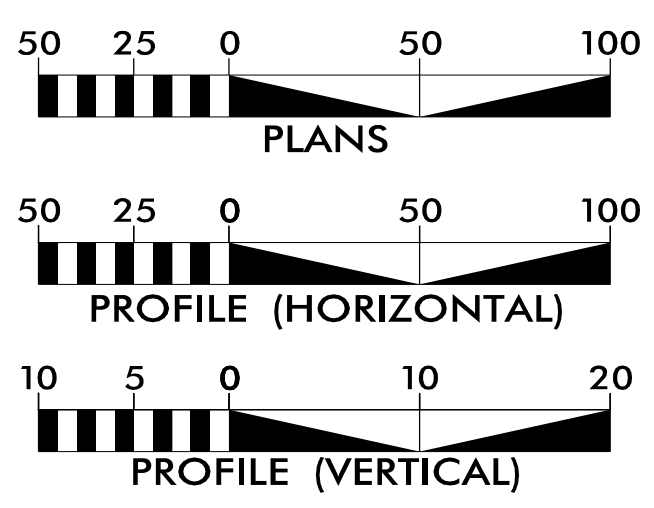
UO-2



4

THIS PROJECT IS NOT WITHIN ANY MUNICIPAL BOUNDARIES.
CLEARING ON THIS PROJECT SHALL BE PERFORMED TO THE LIMITS ESTABLISHED BY METHOD ___.

GRAPHIC SCALES



INDEX OF SHEETS

SHEET NO.:	DESCRIPTION:
UO-1	TITLE SHEET
UO-2	UBO PLAN SHEETS

UTILITY OWNERS WITH CONFLICTS

- (A) TELEPHONE - BROADPLEX
- (B) POWER DISTRIBUTION - DUKE ENERGY
- (C) POWER DISTRIBUTION - PEE DEE EMC

PREPARED IN THE OFFICE OF:

WETHERILL ENGINEERING

1223 Jones Franklin Road
Raleigh, N.C. 27606
License No. F-0377
Bus: 919 851 8077
Fax: 919 851 8107

TRANSPORTATION PLANNING/DESIGN - BRIDGE/STRUCTURE DESIGN
CIVIL/SITE DESIGN - GIS/GPS - CONSTRUCTION OBSERVATION

John D. Schriener, PLS PROJECT UTILITY COORDINATOR

STATE OF NORTH CAROLINA
DEPARTMENT OF TRANSPORTATION

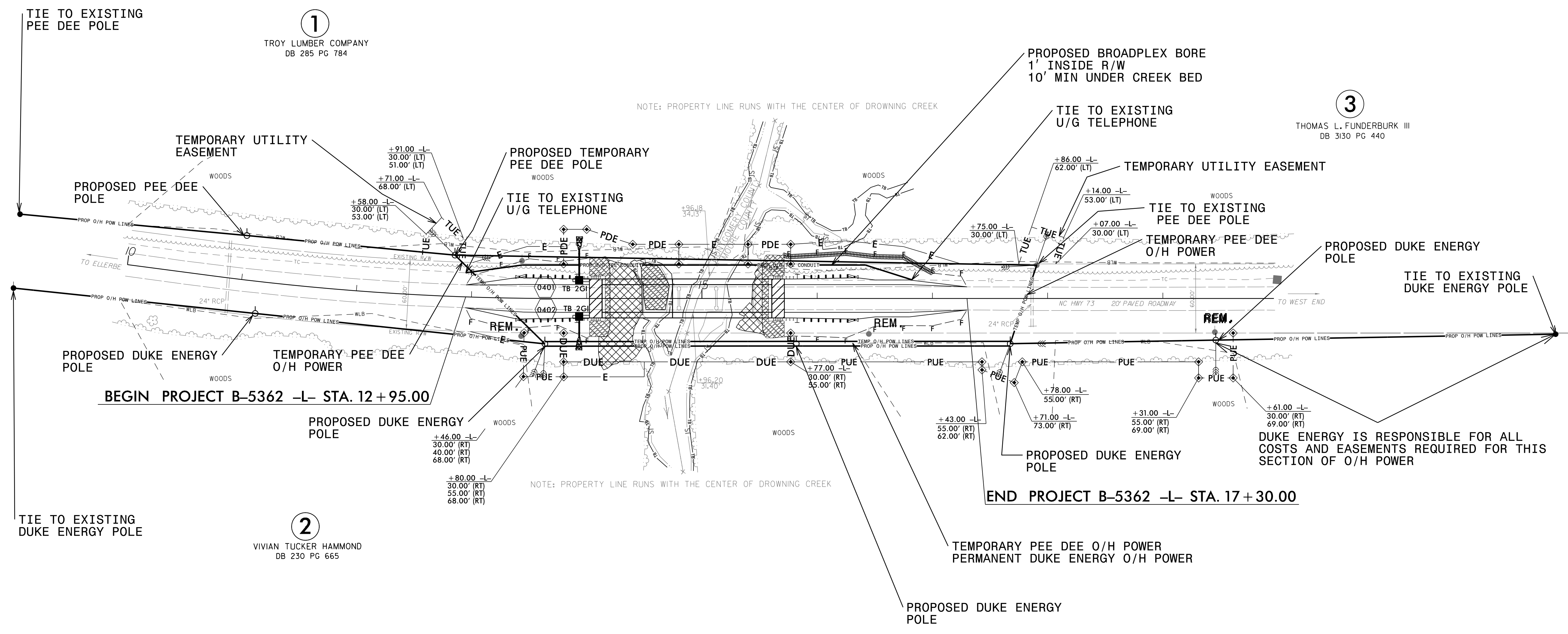
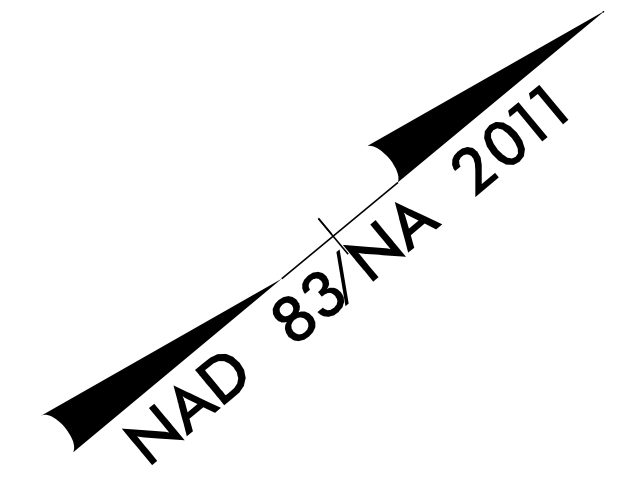
DIVISION OF HIGHWAYS
UTILITIES UNIT
1555 MAIL SERVICES CENTER
RALEIGH, NC 27699-1555
PHONE (919) 707-6690
FAX (919) 250-4151

Donna Jackson UTILITIES REGIONAL ENGINEER
Don Proper UTILITIES PROJECT ENGINEER
Ed Reams UTILITIES AREA COORDINATOR
Tanga Sampson UTILITIES COORDINATOR

\$\$\$ SYSTEMS \$\$\$
\$\$\$ DGN \$\$\$
\$\$\$ USER NAME \$\$\$

UTILITIES BY OTHERS

NOTE:
ALL PROPOSED UTILITY WORK SHOWN ON THIS SHEET WILL BE DONE BY OTHERS. NO PAYMENT WILL BE MADE TO THE CONTRACTOR FOR PROPOSED UTILITY WORK SHOWN ON THIS SHEET.



- NOTES
- 1) THE EXISTING PEE DEE EMC O/H POWER CROSSING THE CREEK WILL BE REMOVED FOR CONSTRUCTION. THE O/H POWER WILL BE RESTORED TO ITS ORIGINAL LOCATION WHEN CONSTRUCTION IS COMPLETE.
 - 2) THE PROPOSED TELEPHONE BORE WILL MAINTAIN FULL DEPTH UNTIL IT IS CLEAR OF THE BRIDGE EXCAVATION.

REVISIONS

5/14/99
3:50:55 AM
C:\Users\Engineering\Public\Projects\B5362\ut_rdy\#_U02_psh.dgn
16-Nov-18

①
TROY LUMBER COMPANY
DB 285 PG 784

③
THOMAS L. FUNDERBURK III
DB 3130 PG 440

②
VIVIAN TUCKER HAMMOND
DB 230 PG 665

④
SAMMY & BILLIE HILL
DB 719 PG 179