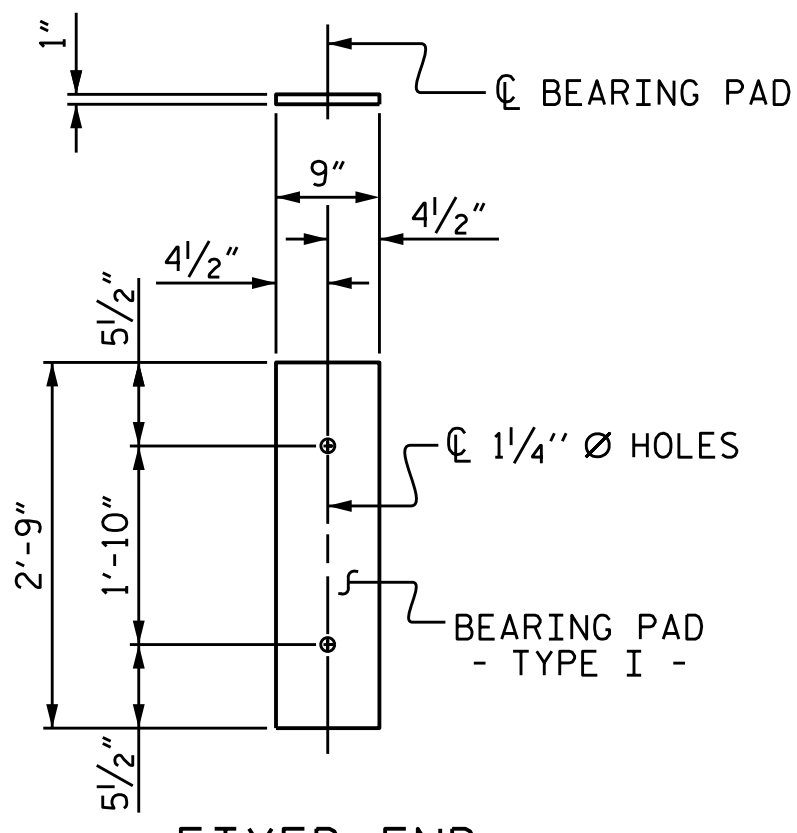


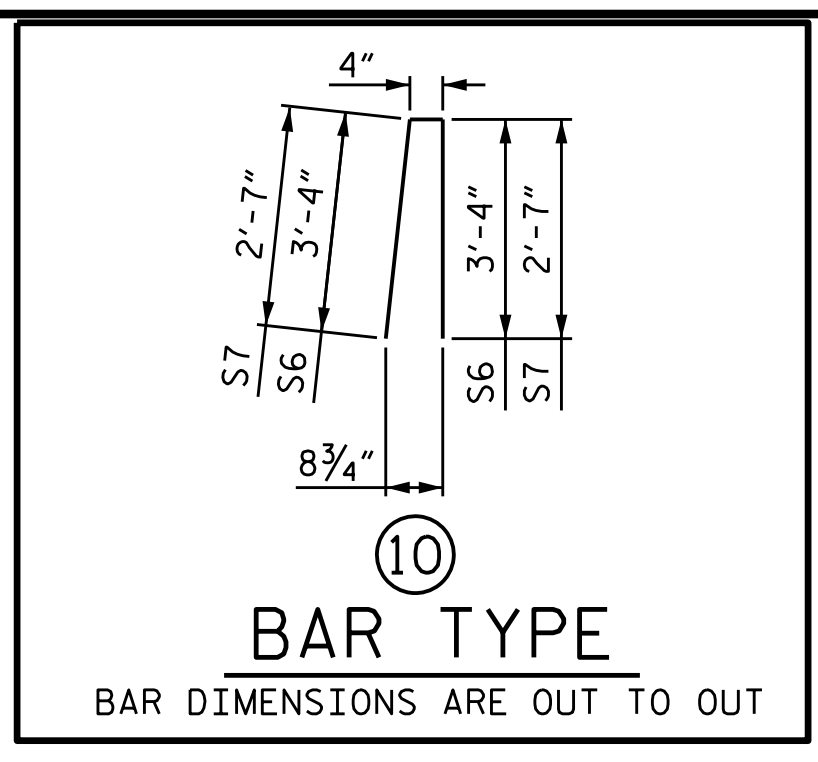
PLAN SHOWING CONCRETE WEARING SURFACE REINFORCING STEEL



FIXED END  
 (TYPE I - 48 REQ'D)

ELASTOMERIC BEARING DETAILS

ELASTOMER IN ALL BEARINGS SHALL BE 60 DUROMETER HARDNESS.



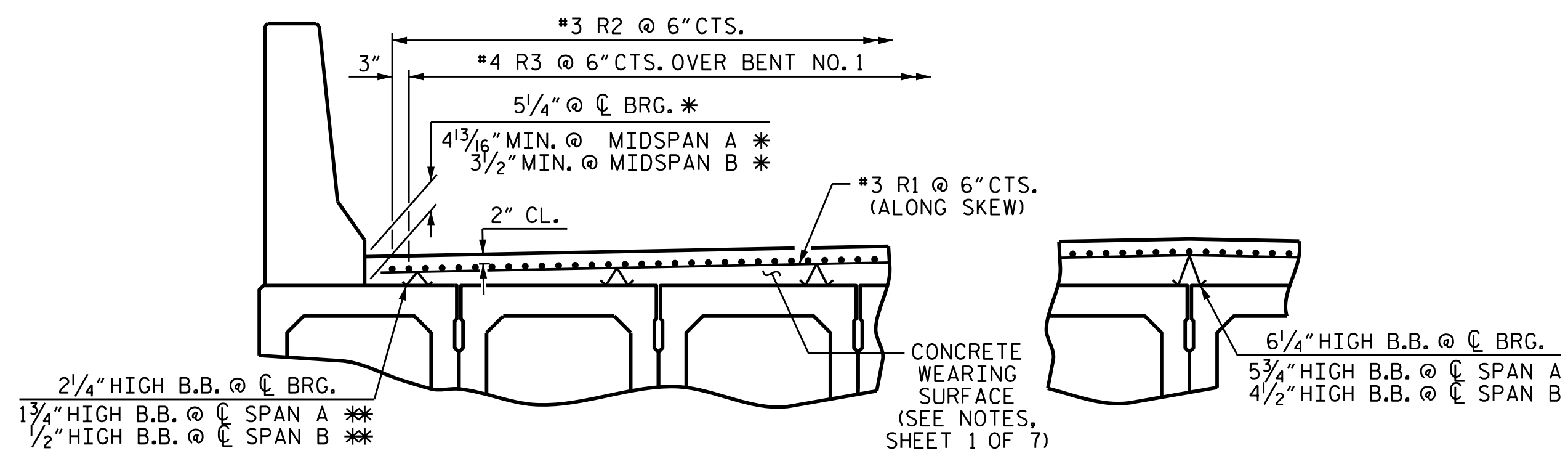
BILL OF MATERIAL FOR CONCRETE BARRIER RAIL						
BAR	BARS PER SPAN	TOTAL NO.	SIZE	TYPE	LENGTH	WEIGHT
*B2	44	44	#5	STR	29'-7"	1358
*B4	66	66	#5	STR	27'-11"	1922
*S6	152	220	#5	10	7'-0"	2716
*S7	4	4	#5	10	5'-6"	46
* EPOXY COATED REINFORCING STEEL					LBS.	6042
CLASS AA CONCRETE					CU.YDS.	45.7
TOTAL LIN. FT. OF CONCRETE BARRIER RAIL						290

BILL OF MATERIAL FOR CONCRETE WEARING SURFACE						
BAR	NO.	SIZE	TYPE	LENGTH	WEIGHT	
*R1	580	#3	STR	16'-11"	3689	
*R2	396	#3	STR	25'-3"	3760	
*R3	65	#4	STR	20'-0"	868	
* EPOXY COATED REINFORCING STEEL					LBS.	8317
CONCRETE WEARING SURFACE					SO. FT.	4765

GROOVING BRIDGE FLOORS	
APPROACH SLABS	840 SQ.FT.
BRIDGE DECK	4304 SQ.FT.
TOTAL	5144 SQ.FT.

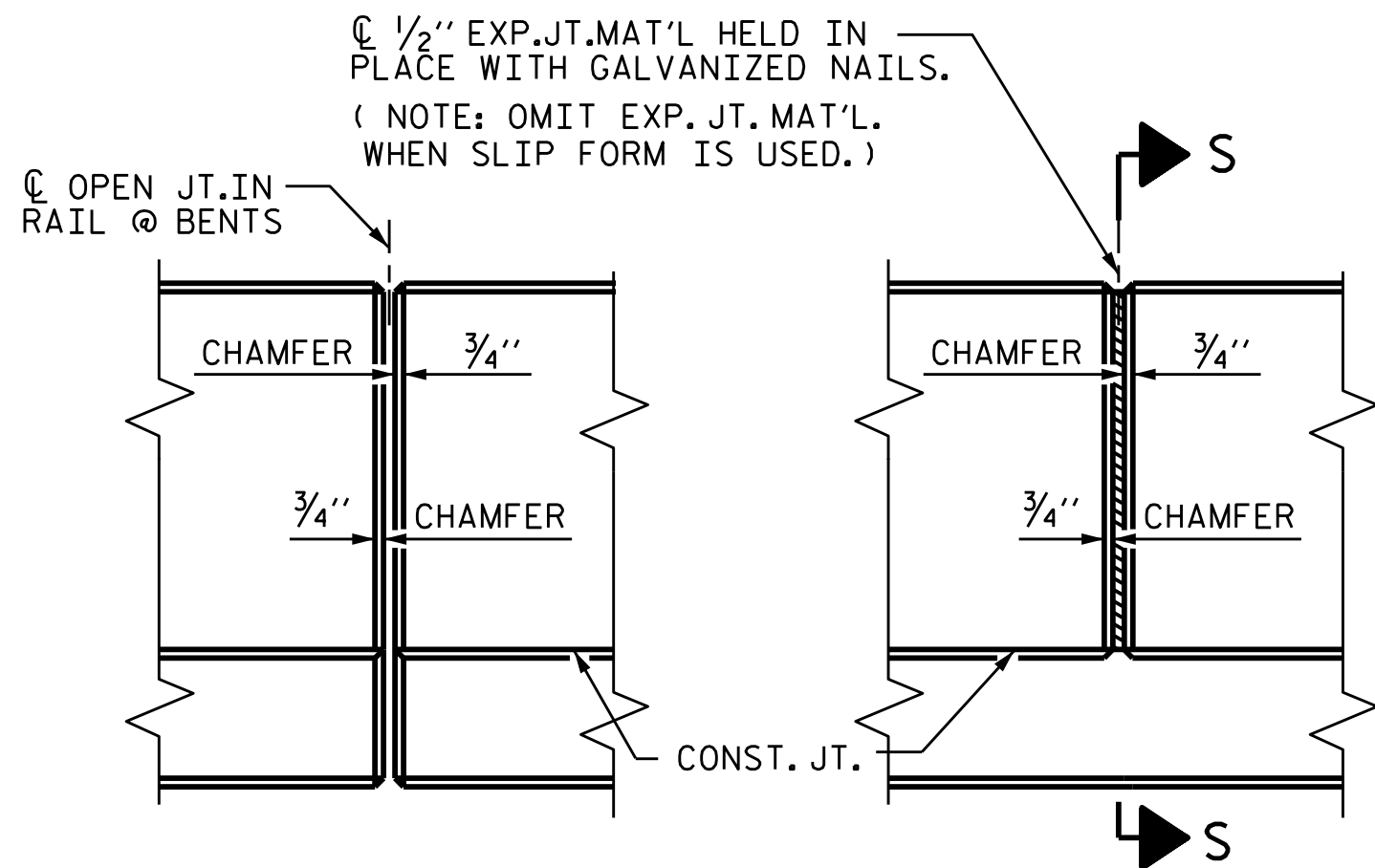
SPLICE LENGTH CHART	
BAR SIZE	EPOXY COATED
#3	1'-3"
#4	1'-8"

BOX BEAM UNITS REQUIRED				
	NUMBER	LENGTH	TOTAL LENGTH	
SPAN A	EXTERIOR B.B.	2	60'-0"	120'-0"
	INTERIOR B.B.	10	60'-0"	600'-0"
SPAN B	EXTERIOR B.B.	2	85'-0"	170'-0"
	INTERIOR B.B.	10	85'-0"	850'-0"
TOTAL	24		1740'-0"	

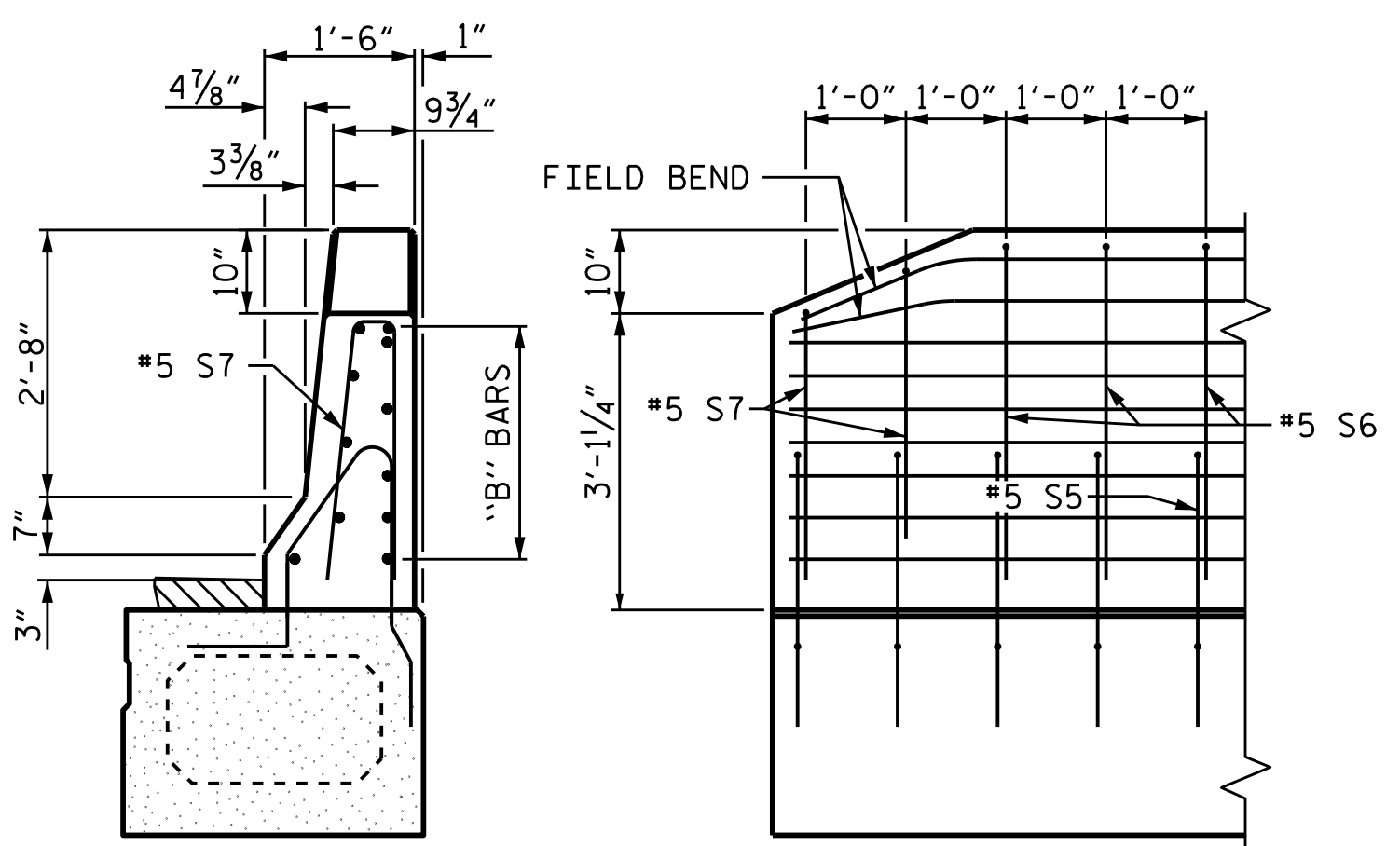
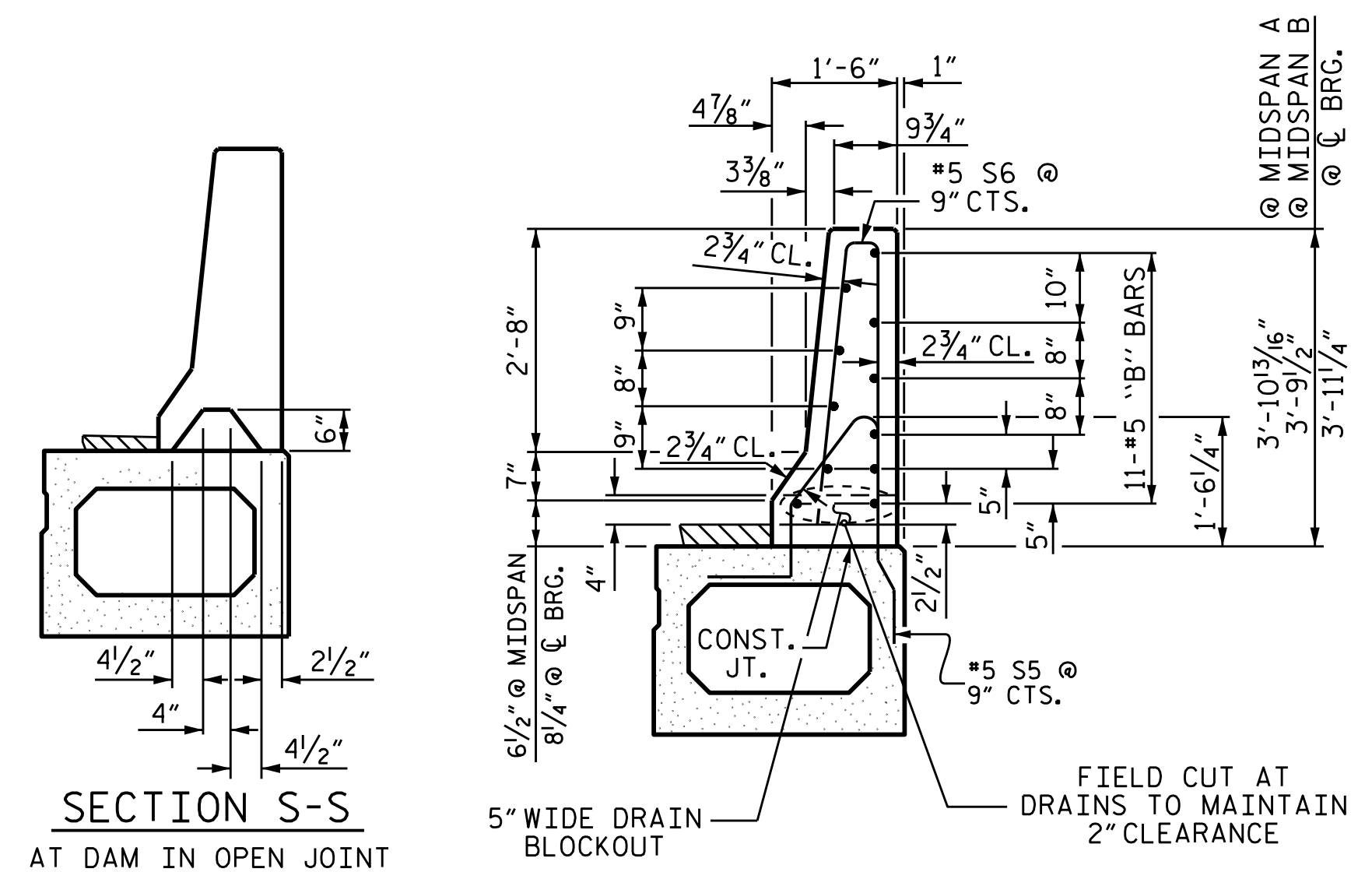


REINFORCING FOR CONCRETE WEARING SURFACE

\* BASED ON PREDICTED FINAL CAMBER AND THEORETICAL GRADE LINE ELEVATIONS  
 \*\* BEAM BOLSTERS (B.B) SHALL BE SPACED AT 2'-0" CENTERS.

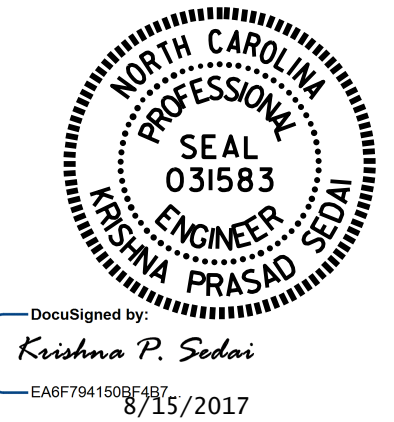


ELEVATION AT EXPANSION JOINTS  
 BARRIER RAIL DETAILS



END OF RAIL DETAILS

PROJECT NO. B-5362  
 MONTGOMERY COUNTY  
 STATION: 14+87.00 -L-  
 SHEET 4 OF 7



DEPARTMENT OF TRANSPORTATION  
 RALEIGH  
 3'-0" X 2'-9"  
 PRESTRESSED CONCRETE  
 BOX BEAM UNIT  
 DETAILS

DRAWN BY: A. SORSENGINH DATE: 7/2016  
 CHECKED BY: E. K. POPE DATE: 3/2017  
 DESIGN ENGINEER OF RECORD: H. A. LOCKLEAR DATE: 3/2017

REVISIONS						TOTAL SHEETS
NO.	BY:	DATE:	NO.	BY:	DATE:	21
1			3			
2			4			

DOCUMENT NOT CONSIDERED FINAL UNLESS ALL SIGNATURES COMPLETED