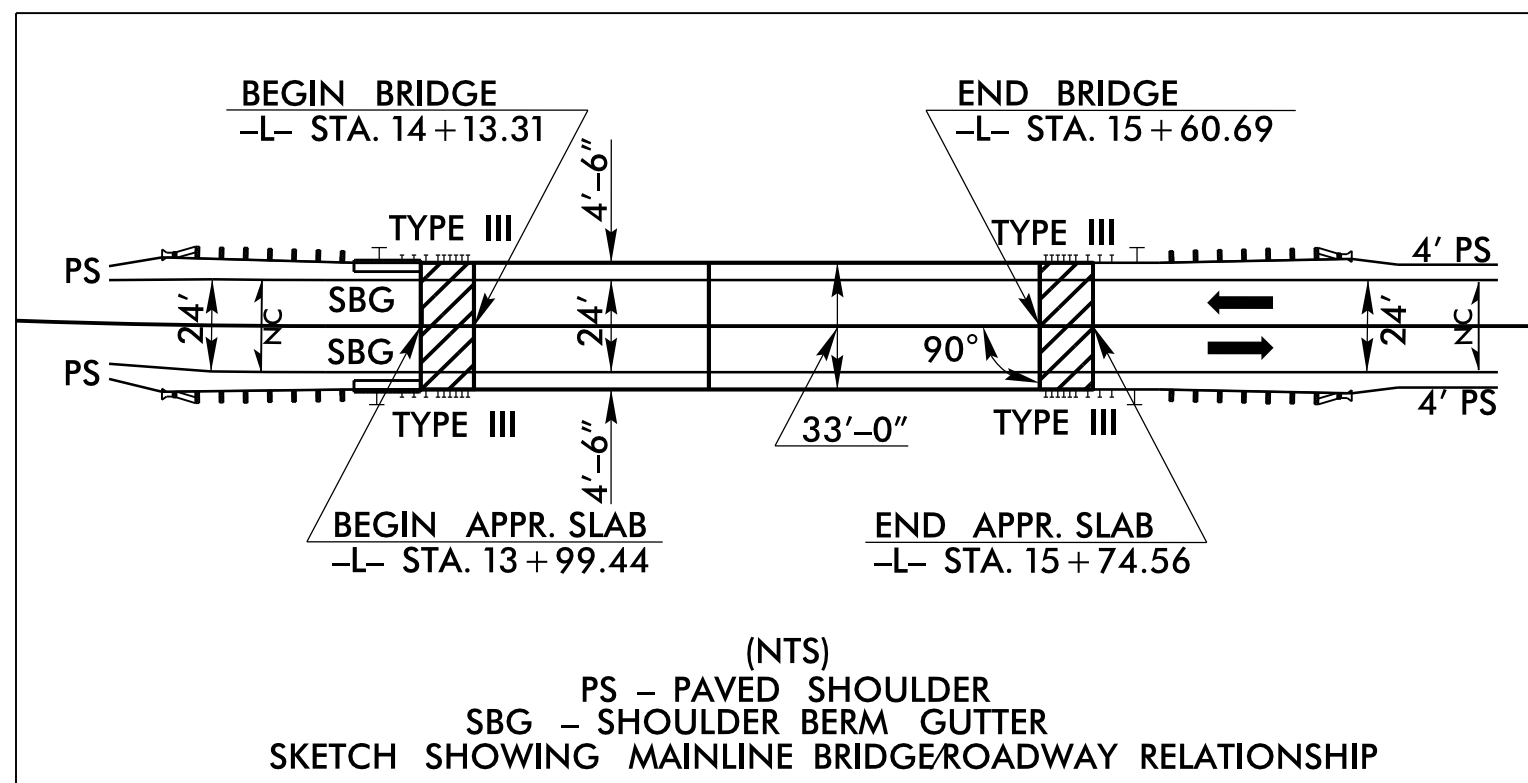
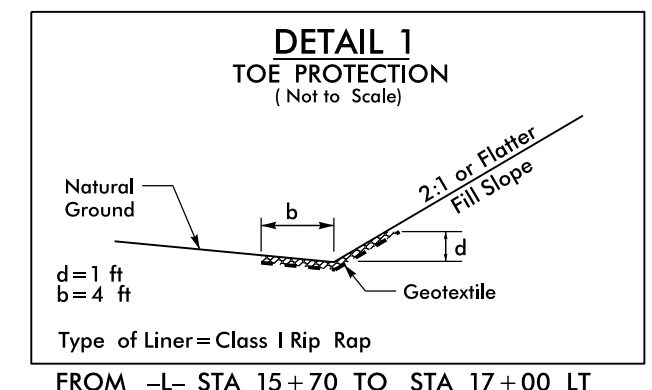


PROJECT REFERENCE NO. B-5362	SHEET NO. EC-4/CONST.4
RW SHEET NO.	
ROADWAY DESIGN ENGINEER	HYDRAULICS ENGINEER



(NTS)  
PS - PAVED SHOULDER  
SBC - SHOULDER BERM GUTTER  
SKETCH SHOWING MAINLINE BRIDGE/ROADWAY RELATIONSHIP

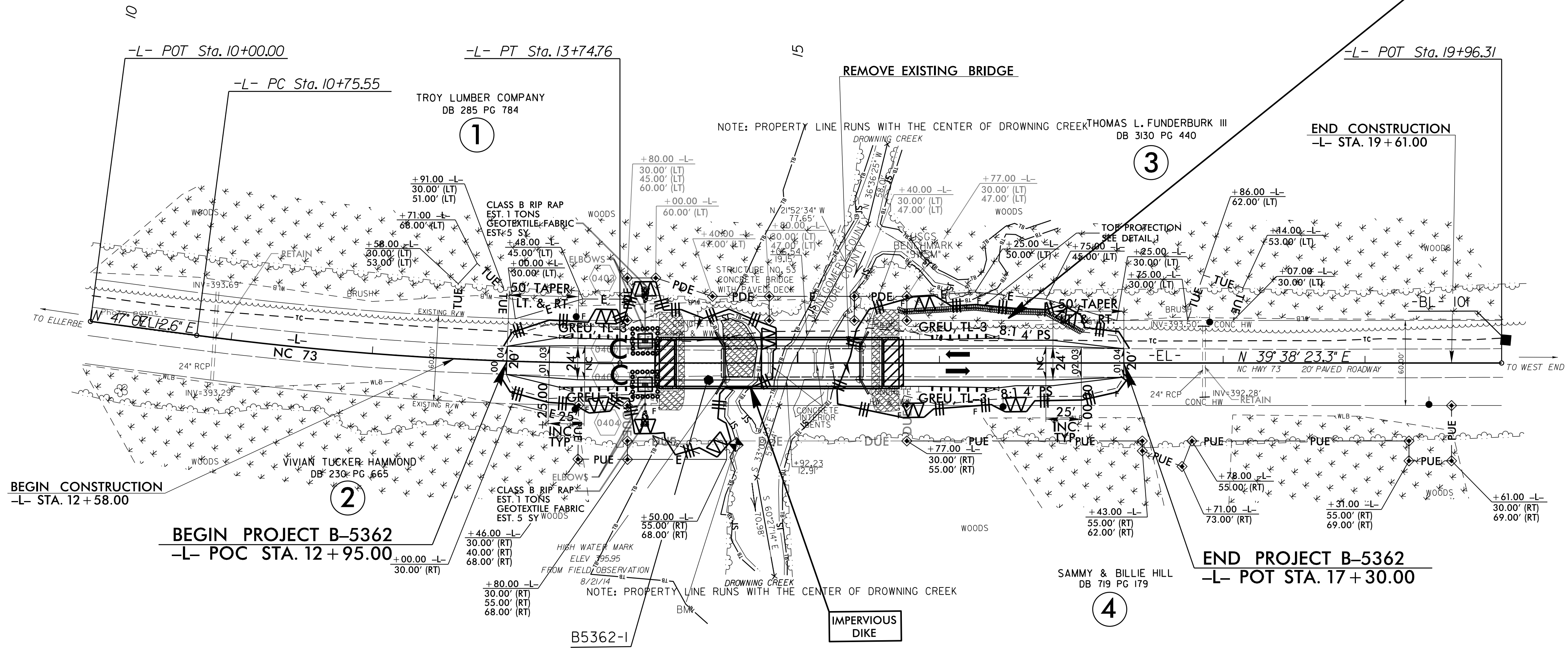
-L-  
PI Sta 12+25.37  
 $\Delta = 7' 28' 49.3" (LT)$   
 $D = 2' 30' 00.0"$   
 $L = 299.2'$   
 $T = 149.82'$   
 $R = 2,291.83'$   
SE SEE PLANS



NAD 83/NA 2011

**DATUM DESCRIPTION**  
THE LOCALIZED COORDINATE SYSTEM DEVELOPED FOR THIS PROJECT IS BASED ON THE STATE PLANE COORDINATES ESTABLISHED BY NCDOT FOR MONUMENT "B5362-1"  
WITH NAD 83/NA 2011 STATE PLANE GRID COORDINATES OF NORTHING: 523825.2270(ft) EASTING: 1806185.6260(ft) ELEVATION: 401.9150(ft)  
THE AVERAGE COMBINED GRID FACTOR USED ON THIS PROJECT (GROUND TO GRID) IS: 0.9998589036  
THE N.C. LAMBERT GRID BEARING AND LOCALIZED HORIZONTAL GROUND DISTANCE FROM "B5362-1" TO -L- STATION IS  
ALL LINEAR DIMENSIONS ARE LOCALIZED HORIZONTAL DISTANCES VERTICAL DATUM USED IS NAVD 88

Place Matting for Erosion Control on Slopes Adjacent to Permitted Wetlands as Work Allows.



NOTE:  
UTILIZE SPECIAL STILLING BASIN(S) WHERE APPLICABLE AND AS DIRECTED.

SEE SHEET 5 FOR -L- PROFILE  
SEE SHEET S-1 THRU S-2 FOR STRUCTURE PLANS

8/17/99

30 JUN 2017 10:49  
C:\Users\jsh\Documents\B5362-EC.psh.dgn  
11:26:52 AM