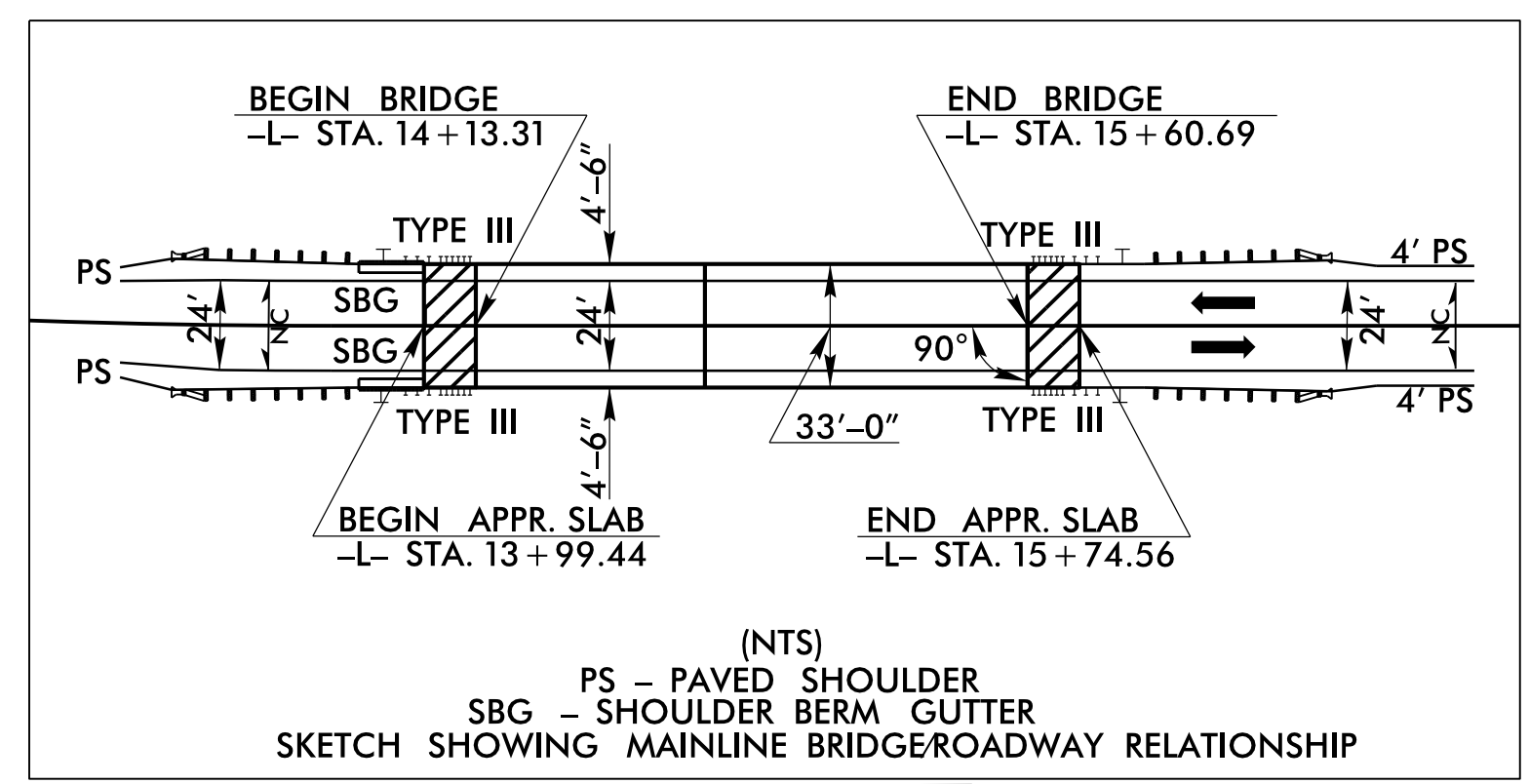
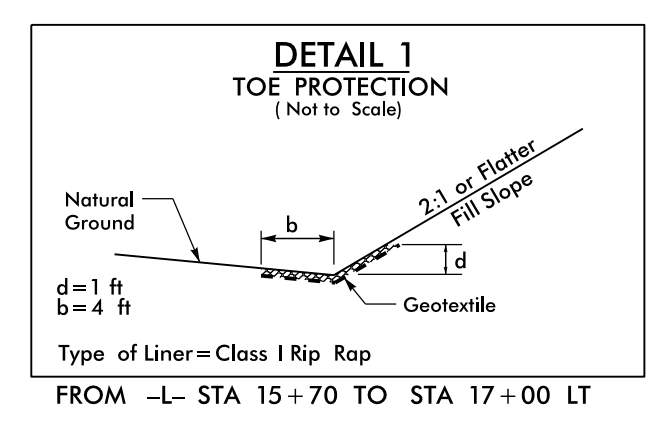


PROJECT REFERENCE NO. B-5362	SHEET NO. EC-3/CONST.4
RW SHEET NO.	
ROADWAY DESIGN ENGINEER	HYDRAULICS ENGINEER



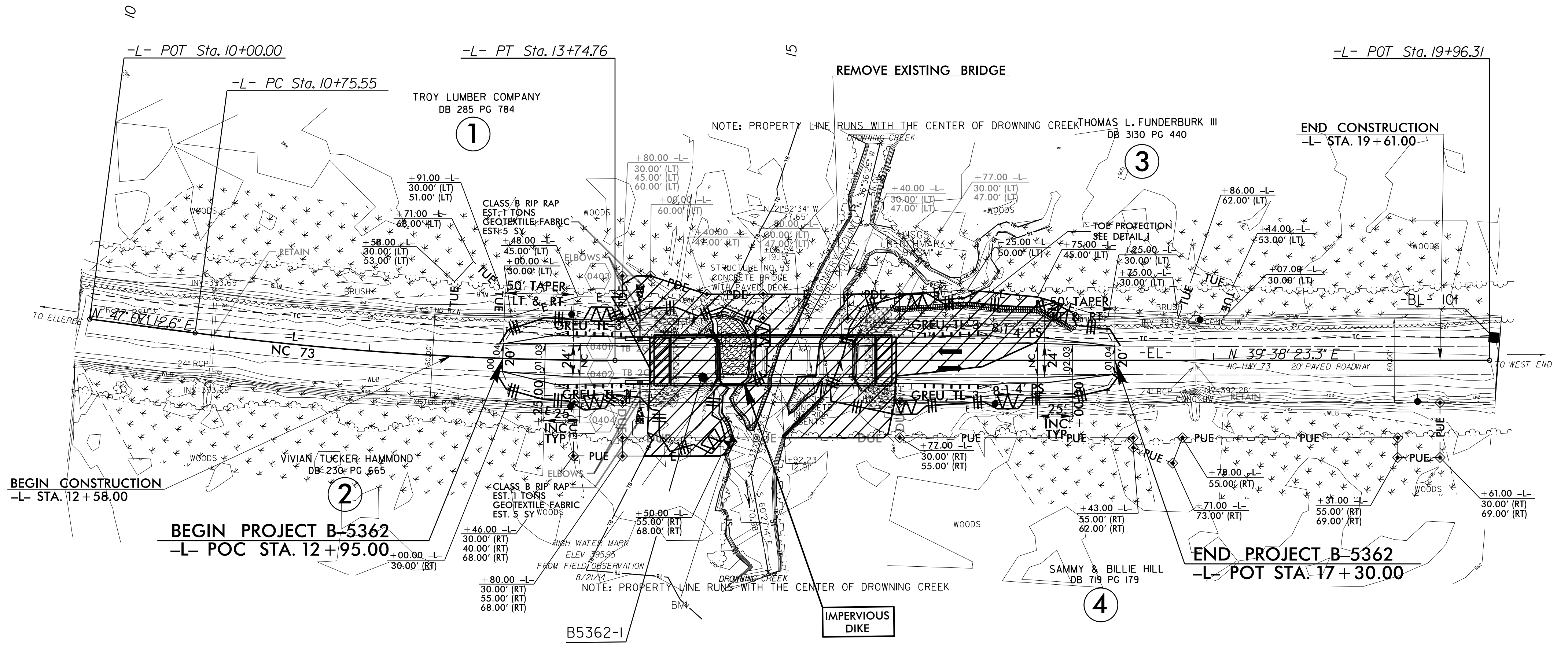
-L-
 $PI\ Sta\ 12+25.37$
 $\Delta = 7^\circ 28' 49.3" (LT)$
 $D = 2^\circ 30' 00.0"$
 $L = 299.2'$
 $T = 149.82'$
 $R = 2,291.83'$
 SE SEE PLANS



NAD 83/NA 2011

CLEARING AND GRUBBING
 EROSION CONTROL FOR
 CONSTRUCTION SHEET 4

DATUM DESCRIPTION
 THE LOCALIZED COORDINATE SYSTEM DEVELOPED FOR THIS PROJECT IS BASED ON THE STATE PLANE COORDINATES ESTABLISHED BY NCDOT FOR MONUMENT "B5362-1"
 WITH NAD 83/NA 2011 STATE PLANE GRID COORDINATES OF NORTHING: 523825.2270(ft) EASTING: 1806185.6260(ft) ELEVATION: 401.9150(ft)
 THE AVERAGE COMBINED GRID FACTOR USED ON THIS PROJECT (GROUND TO GRID) IS: 0.9998589036
 THE N.C. LAMBERT GRID BEARING AND LOCALIZED HORIZONTAL GROUND DISTANCE FROM "B5362-1" TO -L- STATION IS
 ALL LINEAR DIMENSIONS ARE LOCALIZED HORIZONTAL DISTANCES VERTICAL DATUM USED IS NAVD 88



B5362-2



NOTE:
 UTILIZE SPECIAL STILLING BASIN(S) WHERE APPLICABLE AND AS DIRECTED.

NOTE:
 PLACE TEMPORARY ROCK SEDIMENT DAMS TYPE - B AND TEMPORARY ROCK SILT CHECKS TYPE - A AT DRAINAGE OUTLETS.

SEE SHEET 5 FOR -L- PROFILE
 SEE SHEET S-1 THRU S-2 FOR STRUCTURE PLANS

8/17/99
 30 JUN 2017 10:54
 R:_External\B5362-1\Design\B5362-1\EC-3\CONST.4\B5362-1.dgn
 2017-06-17 10:54:54
 2017-06-17 10:54:54