

NO REPAIRS NOTED DURING INSPECTION BY STRUCTURES MANAGEMENT UNIT. THE CONTRACTOR AND ENGINEER SHALL REINSPECT THE SUBSTRUCTURE FOR POTENTIAL REPAIRS.

NOTES

REPAIR LOCATIONS AND ESTIMATE OF QUANTITIES ARE GIVEN WITH THE BEST INFORMATION AVAILABLE. IF ADDITIONAL REPAIRS NOT SHOWN ON THE DRAWINGS ARE DEEMED NECESSARY BY THE INSPECTOR OR ENGINEER THE CONTRACTOR SHALL NOTE ON THE DRAWINGS THE APPROXIMATE LOCATION AND DESCRIPTION OF THE REPAIRS AND ADJUST THE ACTUAL QUANTITIES ENTERED INTO THE REPAIR QUANTITY TABLE.

FOR CAP AND COLUMN REPAIR DETAILS, SEE "TYPICAL CAP AND COLUMN REPAIR DETAILS" SHEET.

FOR SHOTCRETE REPAIRS, SEE SPECIAL PROVISIONS.

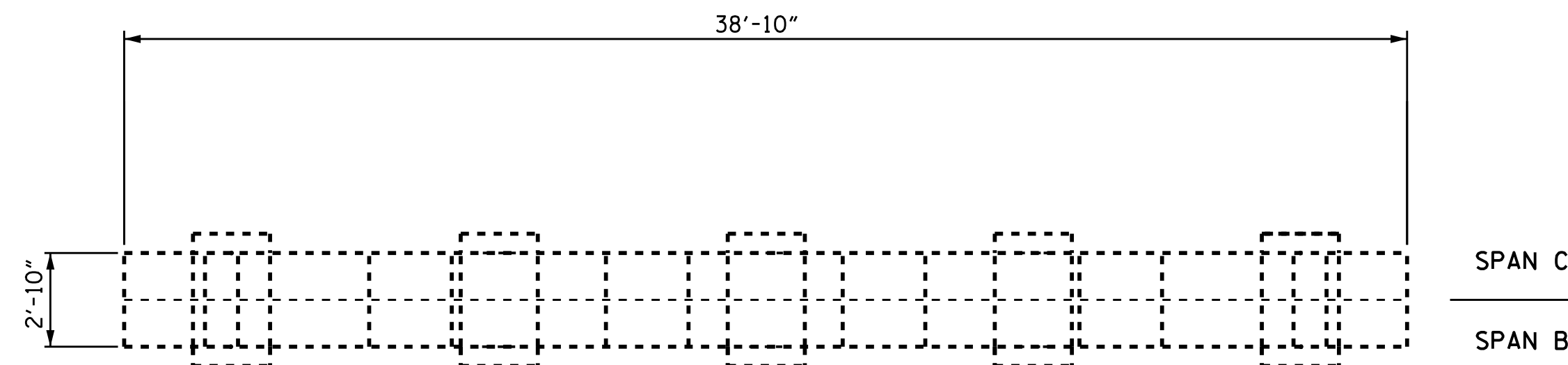
FOR EPOXY RESIN INJECTION, SEE SPECIAL PROVISIONS.

 - SHOTCRETE REPAIR

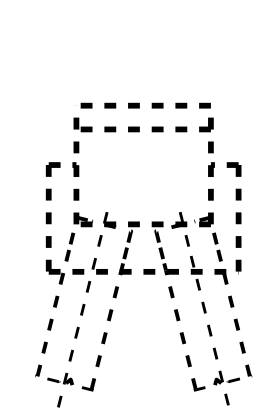
ERI - EPOXY RESIN INJECTION

REPAIR QUANTITY TABLE

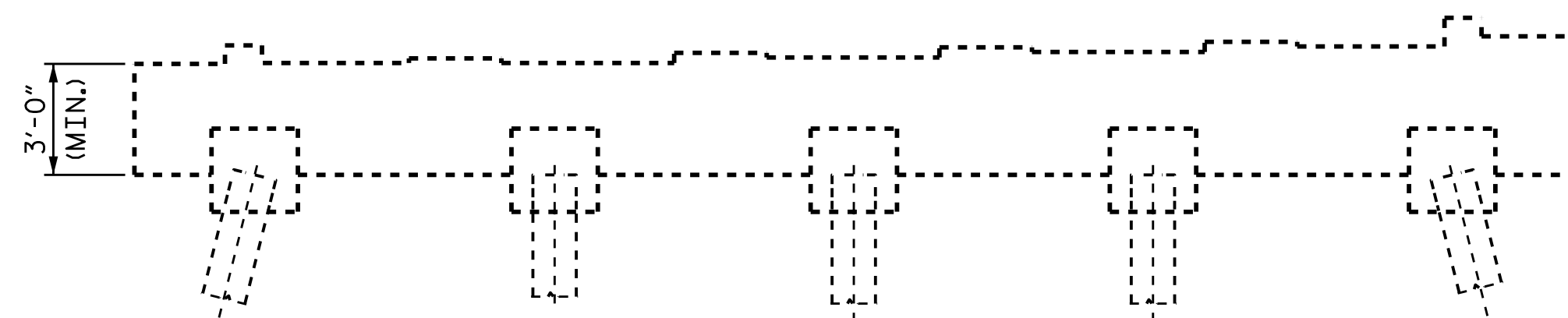
BENT 2	QUANTITIES			
	ESTIMATE		ACTUAL	
SHOTCRETE REPAIRS	AREA SF	VOLUME CF	AREA SF	VOLUME CF
CAP (VERTICAL FACE)	0.0	0.0		
CAP (HORIZONTAL, CORNER)	0.0	0.0		
EPOXY RESIN INJECTION		LN. FT.	LN. FT.	
CAP		0.0		
EPOXY COATING	AREA SF			
TOP OF CAP	110.0			



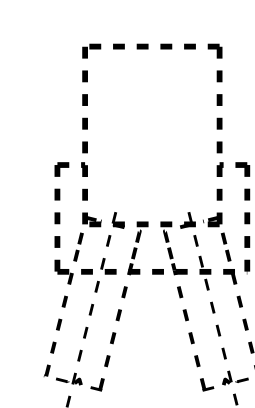
PLAN
(TOP OF CAP)



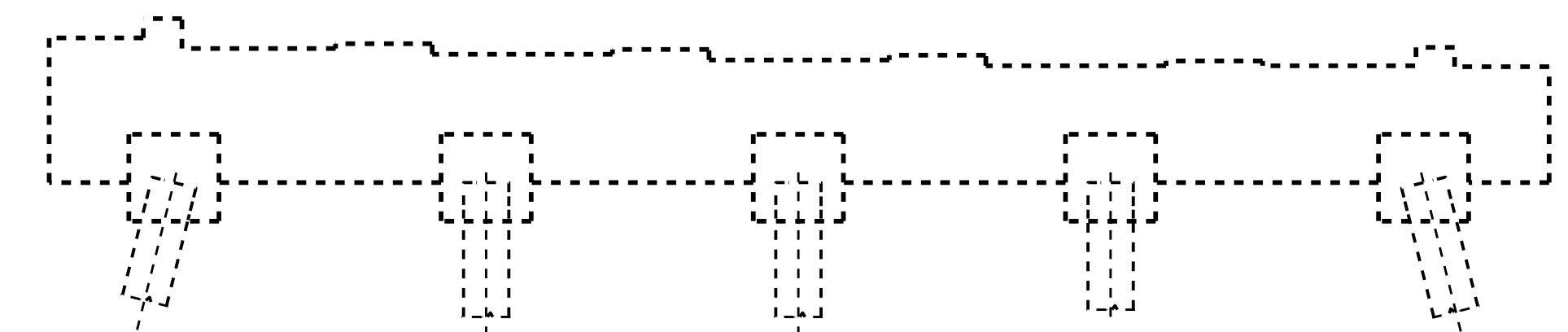
END VIEW
(LEFT SIDE)



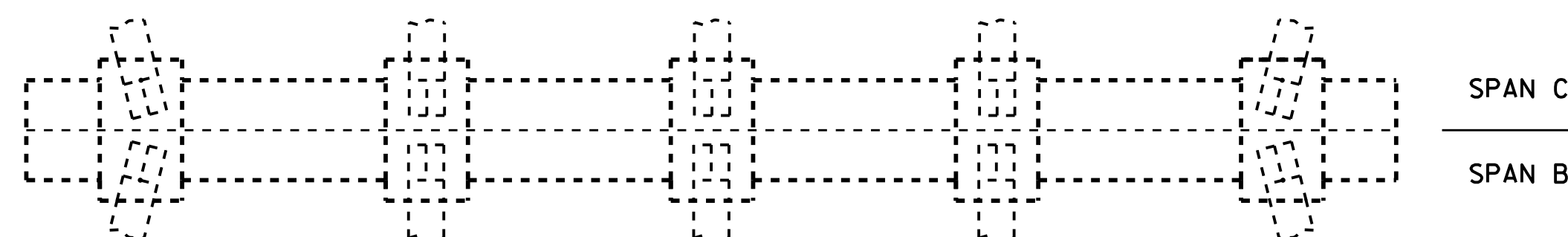
ELEVATION
(SPAN B SIDE)



END VIEW
(RIGHT SIDE)

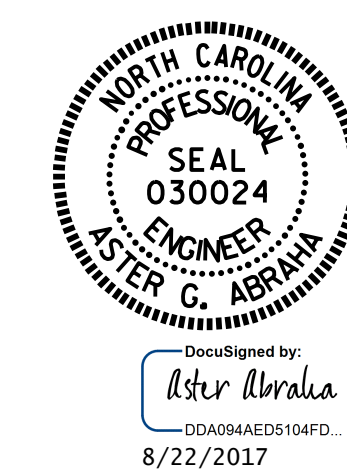


ELEVATION
(SPAN C SIDE)



PLAN
(BOTTOM OF CAP)

PROJECT NO. I-5781
JOHNSTON COUNTY
 BRIDGE NO. 469



STATE OF NORTH CAROLINA
 DEPARTMENT OF TRANSPORTATION
 RALEIGH
SUBSTRUCTURE
 REPAIR
 BENT 2

REVISIONS						SHEET NO.
NO.	BY:	DATE:	NO.	BY:	DATE:	S-8
1			3			TOTAL SHEETS
2			4			69

DOCUMENT NOT CONSIDERED FINAL UNLESS ALL SIGNATURES COMPLETED

DRAWN BY : M. K. BEARD / S. T. SANDOR DATE : 06/2017
 CHECKED BY : W. C. SMITH DATE : 06/2017