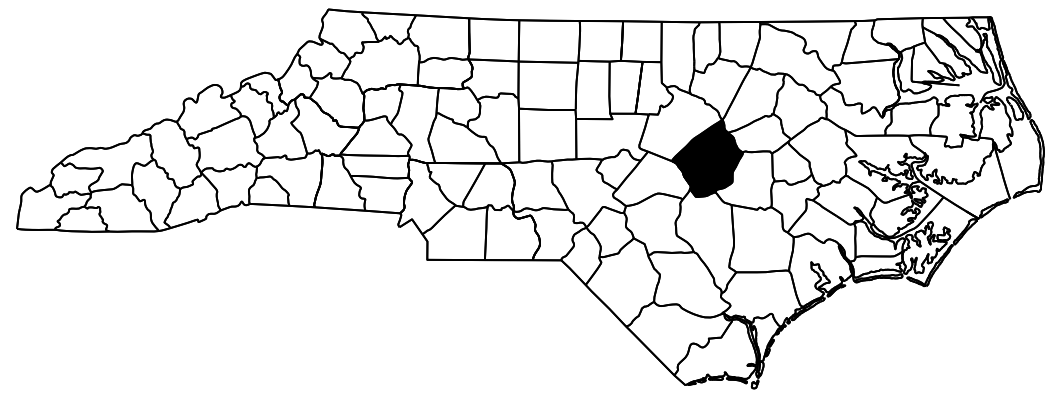


PROJECT: I-5781

CONTRACT: C203977



STATE OF NORTH CAROLINA
DIVISION OF HIGHWAYS

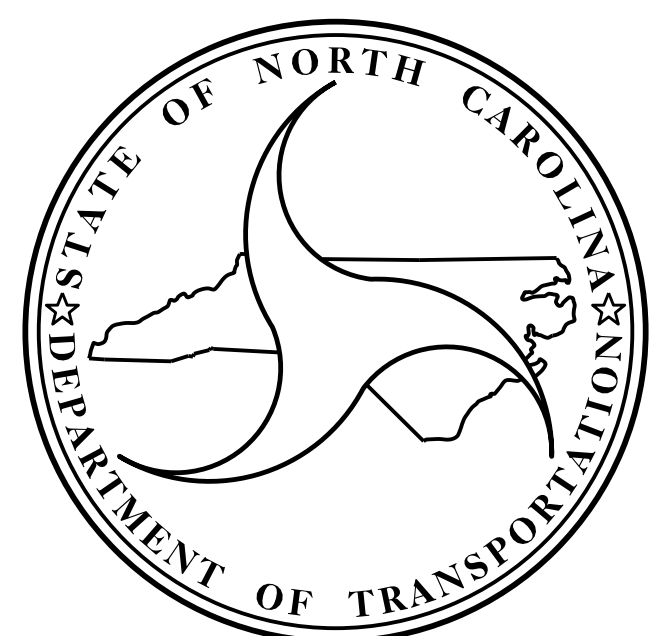
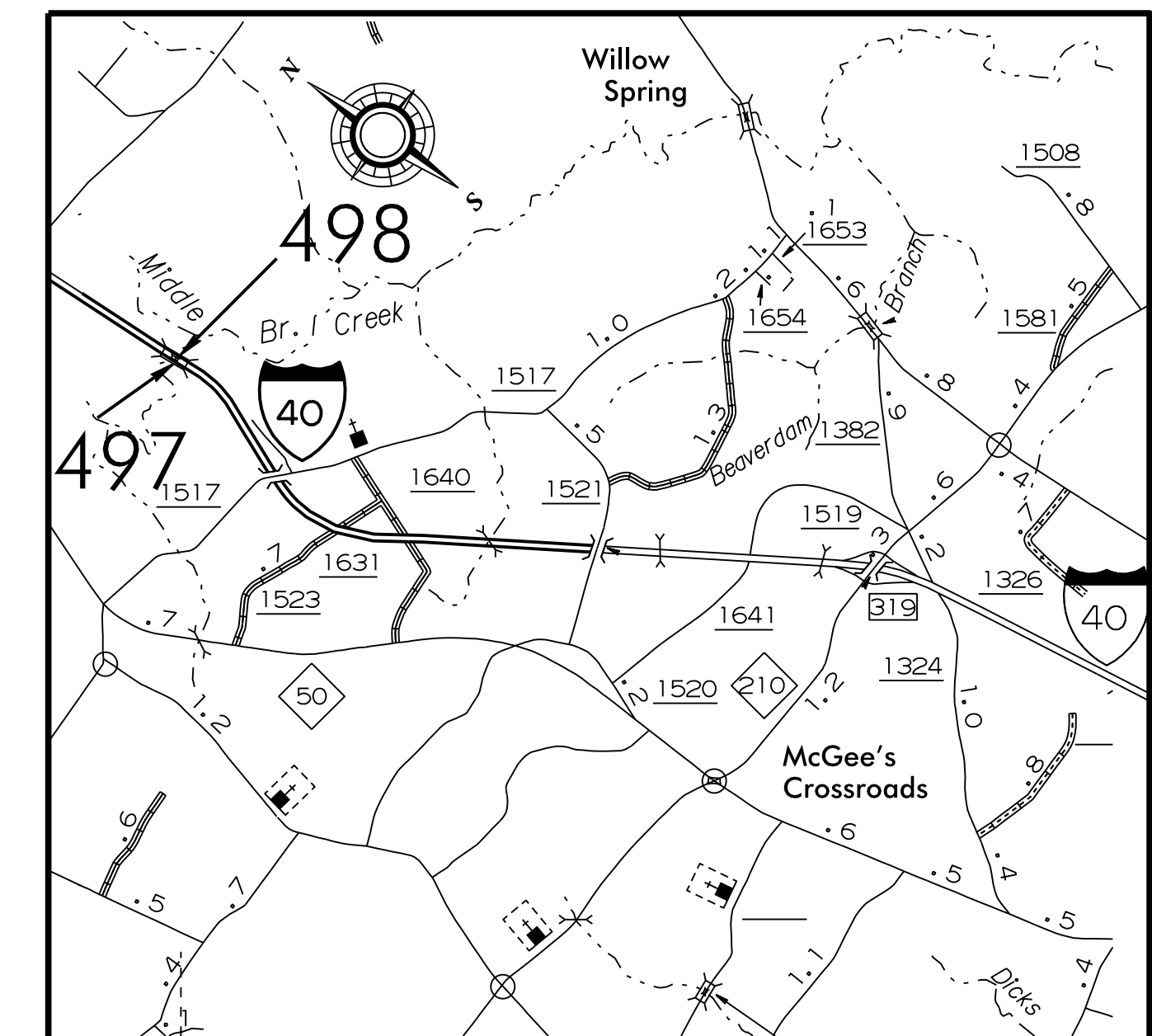
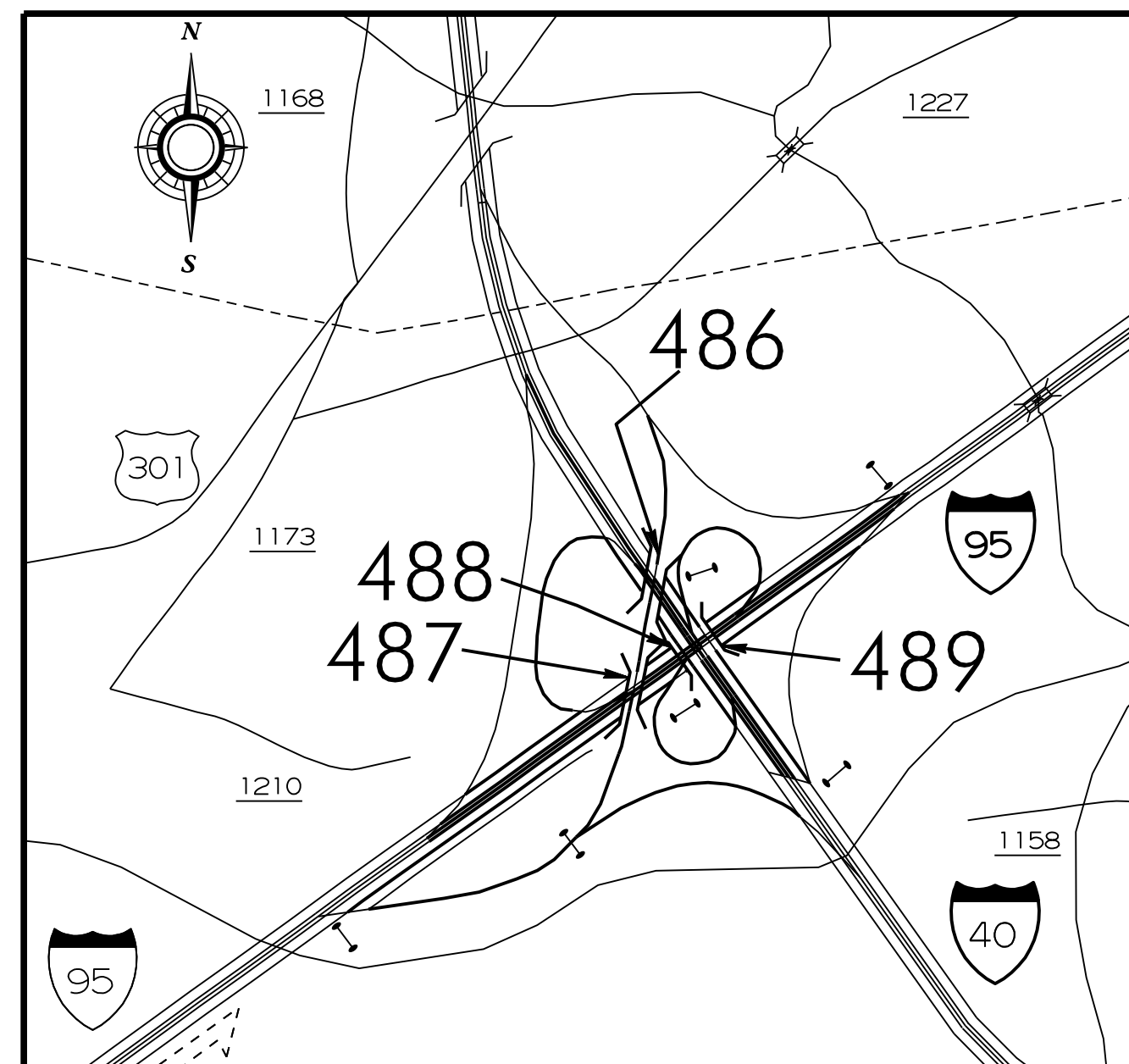
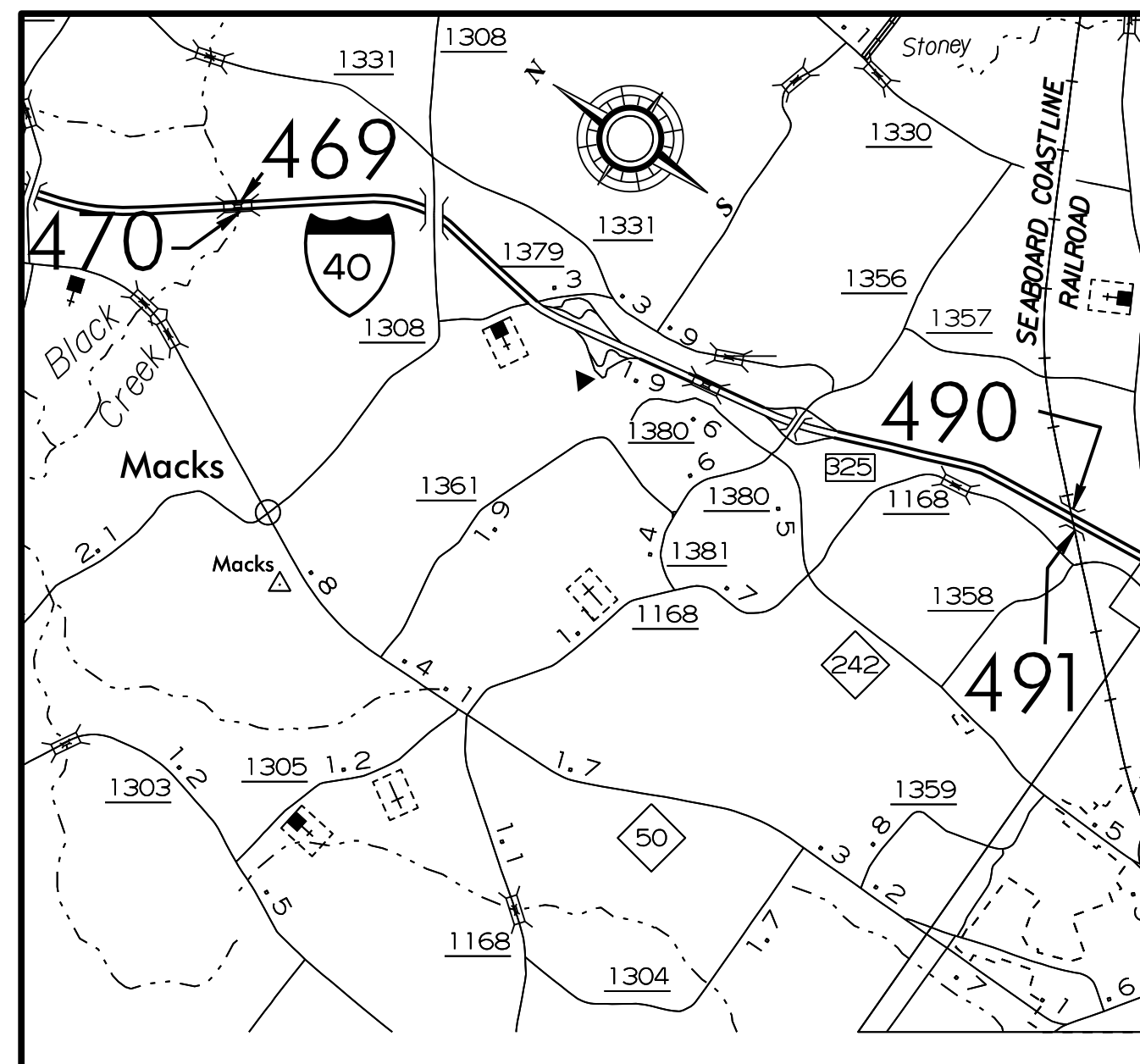
JOHNSTON COUNTY

STATE	STATE PROJECT REFERENCE NO.	SHEET NO.	TOTAL SHEETS
N.C.	I-5781	1	69
STATE PROJ. NO.	F.A. PROJ. NO.	DESCRIPTION	
53022.1.1	NHPIM-0040(050)	P.E.	
53022.3.1	NHPIM-0040(050)	CONST.	

LOCATION:

- BRIDGE #469 ON I-40 WBL OVER BLACK CREEK.**
- BRIDGE #470 ON I-40 EBL OVER BLACK CREEK.**
- BRIDGE #486 ON I-40 WBL RAMP OVER I-40.**
- BRIDGE #487 ON I-40 WBL RAMP OVER I-95.**
- BRIDGE #488 ON I-40 EBL OVER I-95.**
- BRIDGE #489 ON I-40 WBL OVER I-95.**
- BRIDGE #490 ON I-40 WBL OVER SEABOARD COASTLINE RAILROAD.**
- BRIDGE #491 ON I-40 EBL OVER SEABOARD COASTLINE RAILROAD.**
- BRIDGE #497 ON I-40 EBL OVER MIDDLE CREEK.**
- BRIDGE #498 ON I-40 WBL OVER MIDDLE CREEK.**

TYPE OF WORK: BRIDGE PRESERVATION WITH POLYESTER POLYMER CONCRETE OVERLAY, SILICONE JOINT SEALS, GROOVING, PAINTING OF EXISTING WEATHERING STEEL, SUPERSTRUCTURE REPAIRS AND SUBSTRUCTURE REPAIRS.



DESIGN DATA

BRIDGE #469 ADT 2013	=	21,500
BRIDGE #470 ADT 2013	=	21,500
BRIDGE #486 ADT 2013	=	10,000
BRIDGE #487 ADT 2013	=	10,000
BRIDGE #488 ADT 2013	=	20,000
BRIDGE #489 ADT 2013	=	18,000
BRIDGE #490 ADT 2013	=	20,000
BRIDGE #491 ADT 2013	=	20,000
BRIDGE #497 ADT 2013	=	48,000
BRIDGE #498 ADT 2013	=	24,000

PROJECT LENGTH

BRIDGE #469	=	0.044 MILES
BRIDGE #470	=	0.044 MILES
BRIDGE #486	=	0.056 MILES
BRIDGE #487	=	0.059 MILES
BRIDGE #488	=	0.040 MILES
BRIDGE #489	=	0.040 MILES
BRIDGE #490	=	0.030 MILES
BRIDGE #491	=	0.030 MILES
BRIDGE #497	=	0.052 MILES
BRIDGE #498	=	0.052 MILES

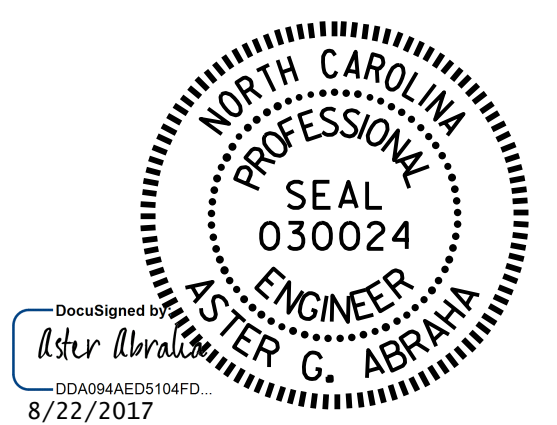
Prepared in the Office of:
DEPARTMENT OF TRANSPORTATION
DIVISION OF HIGHWAYS
STRUCTURES MANAGEMENT UNIT - PRESERVATION & REPAIR GROUP
1000 BIRCH RIDGE DR. RALEIGH, N.C. 27610

GREGORY W. DICKEY, P.E.

PROJECT ENGINEER

2012 STANDARD SPECIFICATIONS

LETTING DATE:
OCTOBER 17, 2017



ASTER G. ABRAHA, P.E.
PROJECT DESIGN ENGINEER