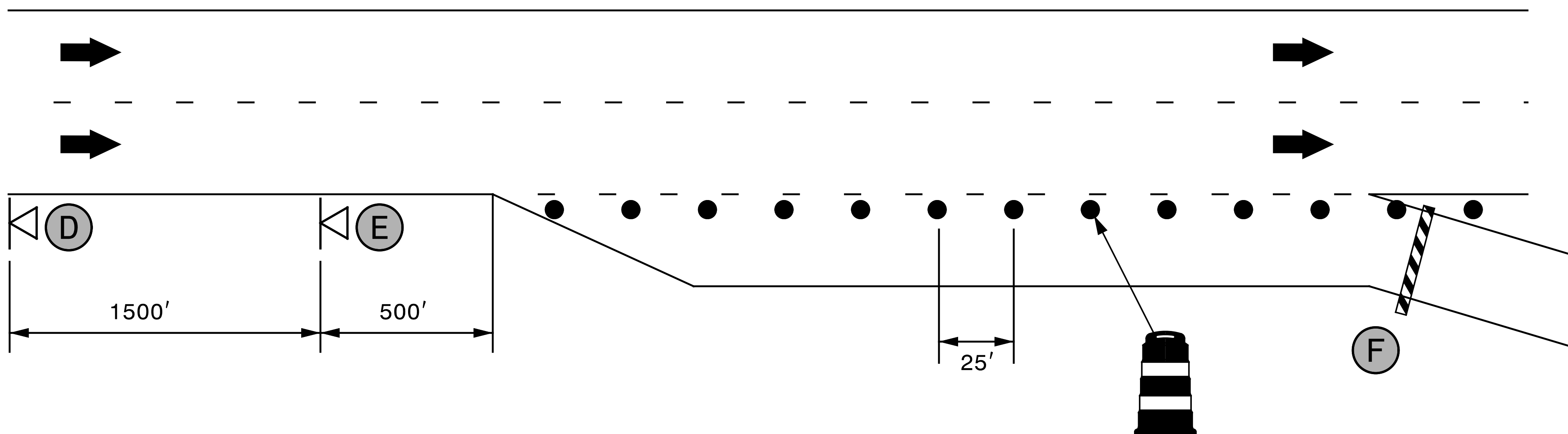
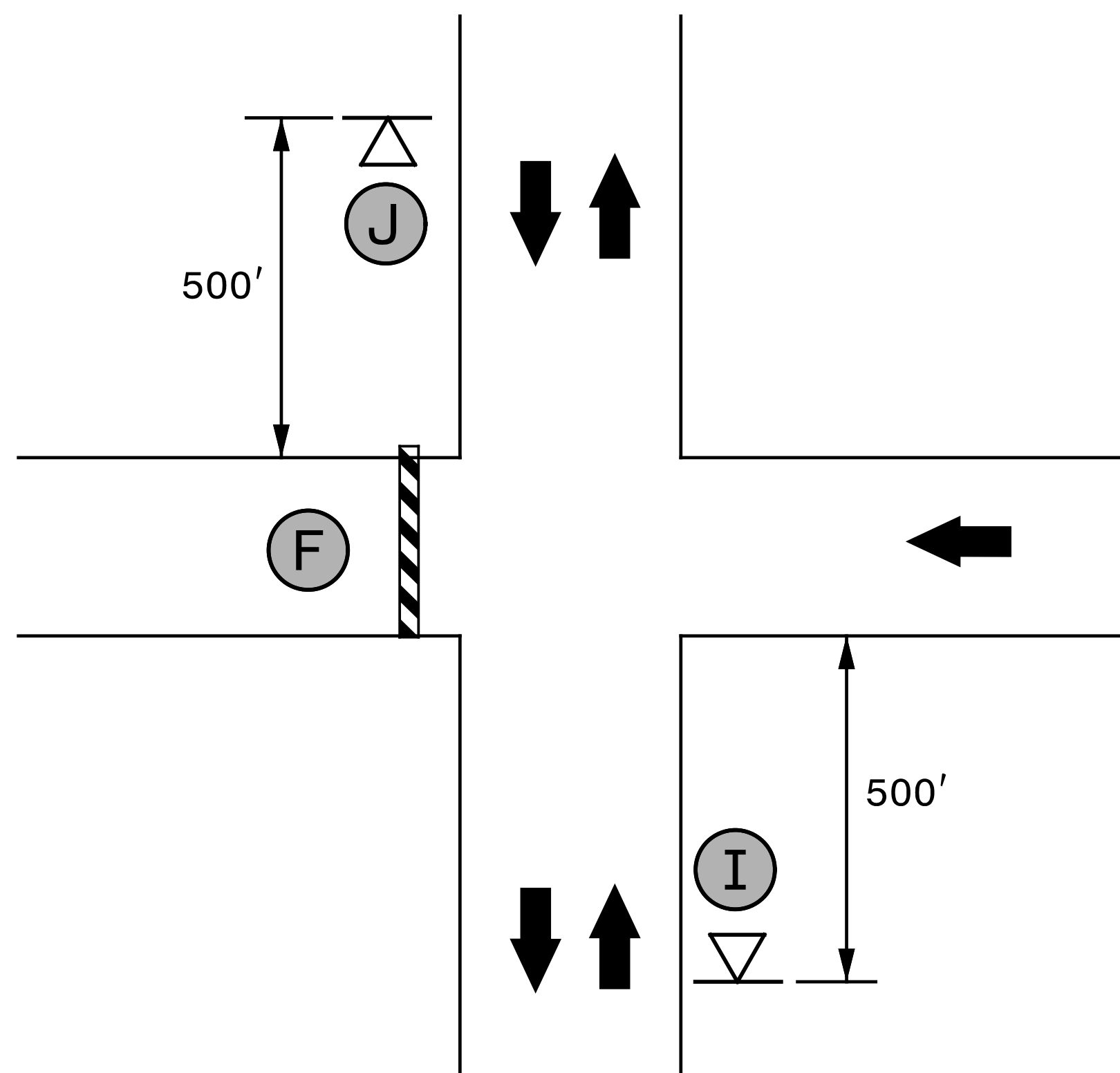


RAMP B, RAMP D, LOOP A, LOOP C, LOOP B CLOSURE

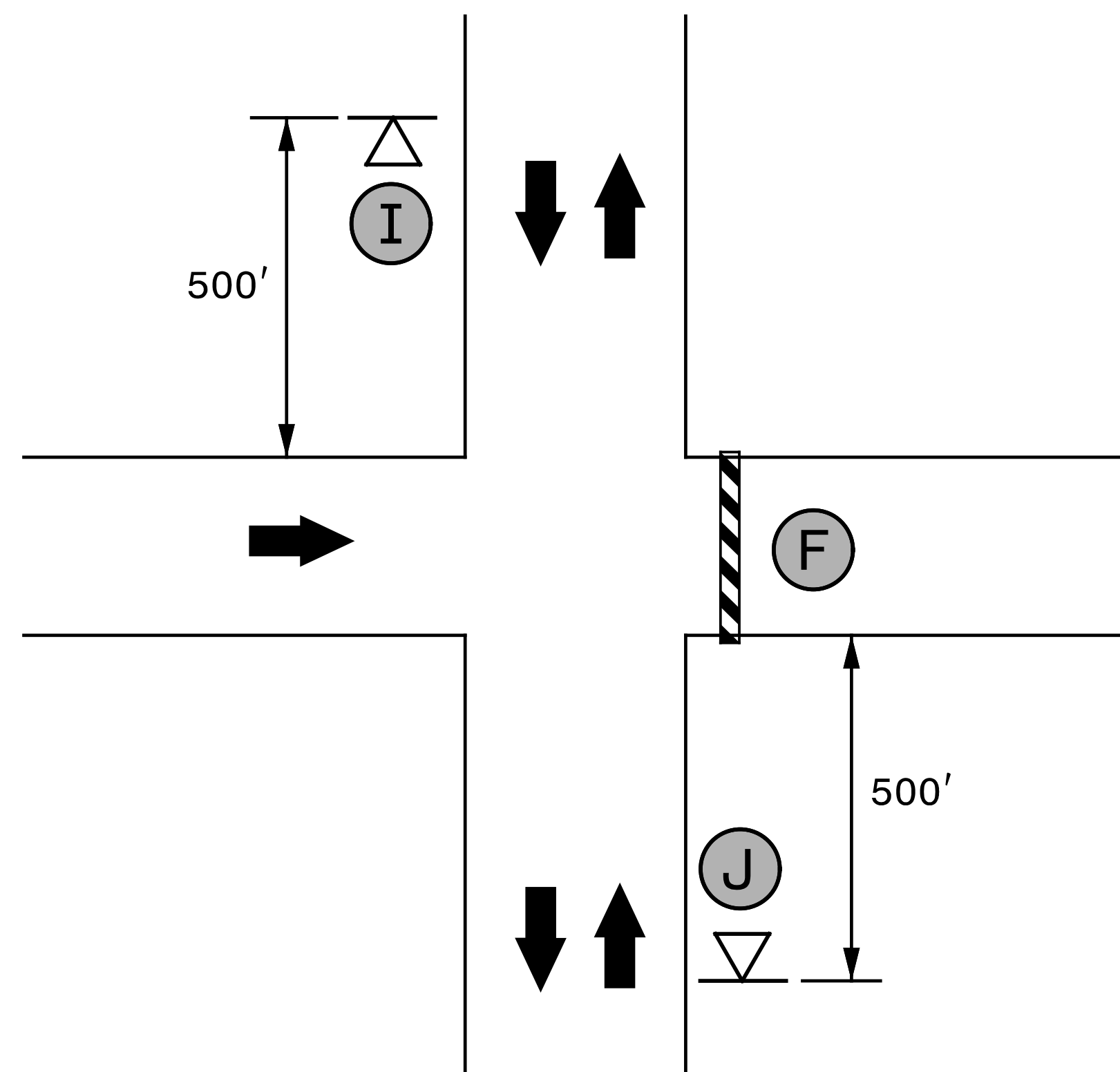
PROJ. REFERENCE NO.	SHEET NO.
I-5781	TMP-13



RAMP A CLOSURE



RAMP C CLOSURE



NOTE: SEE TMP-2 FOR SIGN LEGEND

5/9/2017 10:58:00 I-5781\TP\Tr-off\I-5781\TMP-13.dgn
X:\2017\SET\I-5781\Tr-off\I-5781\TMP-13.dgn
jbauman

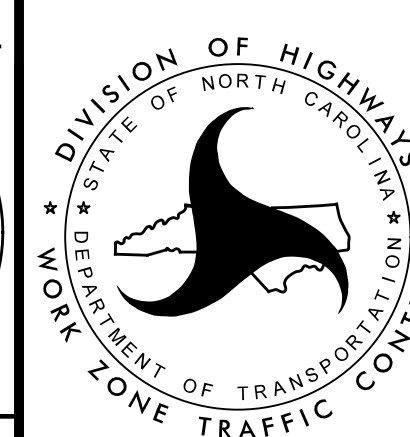
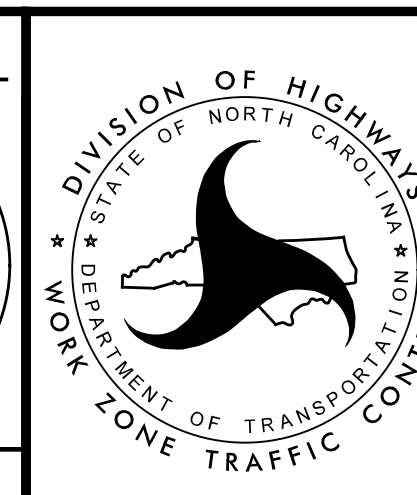
SEPI
ENGINEERING & CONSTRUCTION

1025 Wade Avenue
Raleigh, NC 27605
Tel: 919-789-9977
Fax: 919-789-9591
License: C-2197

APPROVED: *Steven D. Miller*
DATE: 7/31/2017

SEAL

**DOCUMENT NOT CONSIDERED FINAL
UNLESS ALL SIGNATURES COMPLETED**



RAMP CLOSURE TYPICAL