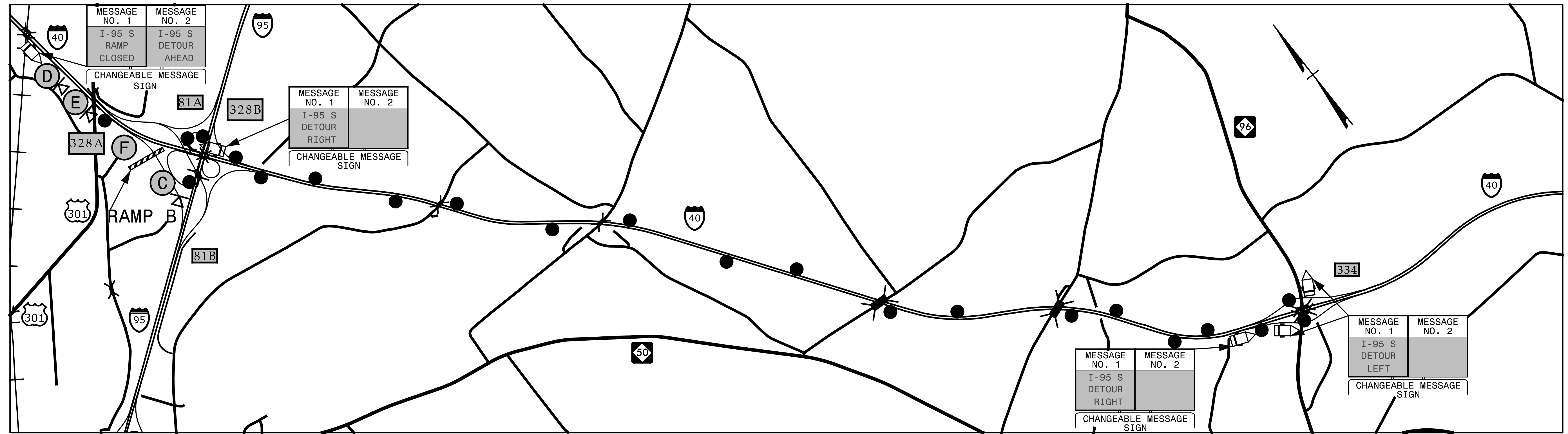
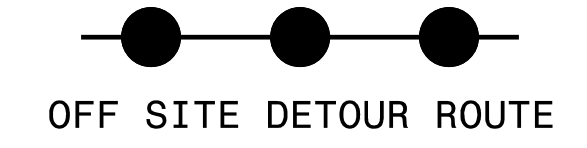
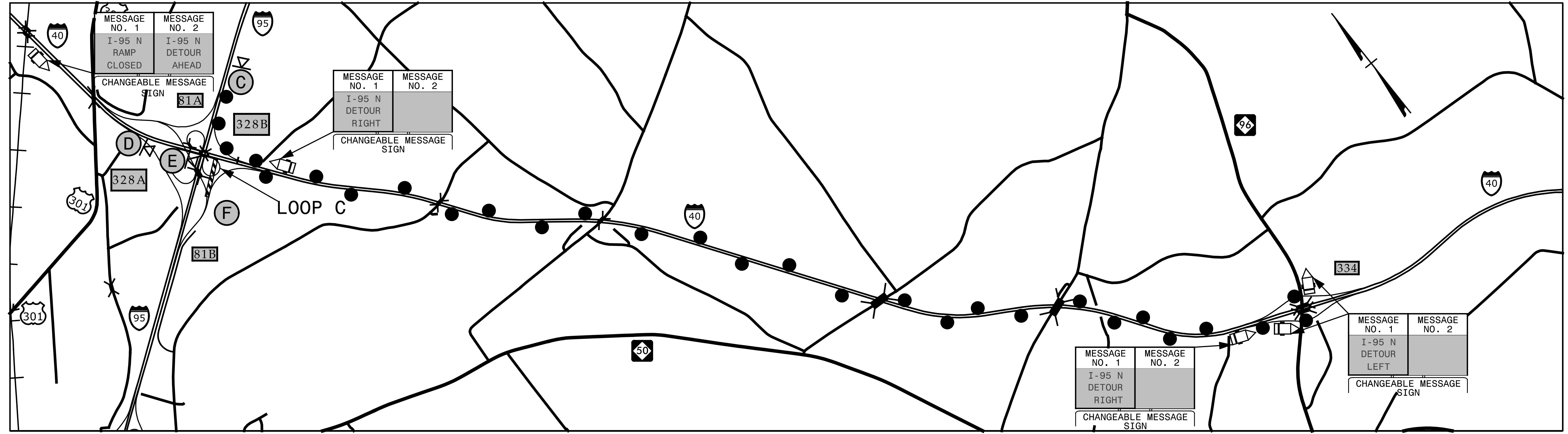


EXIT 328A RAMP B - I-40 / I-95

| | |
|---------------------|-----------|
| PROJ. REFERENCE NO. | SHEET NO. |
| I-5781 | TMP-9 |



EXIT 328B LOOP C - I-40 / I-95



SEE TMP-2 FOR SIGN LEGEND
SEE TMP-13 FOR RAMP CLOSURE TYPICAL

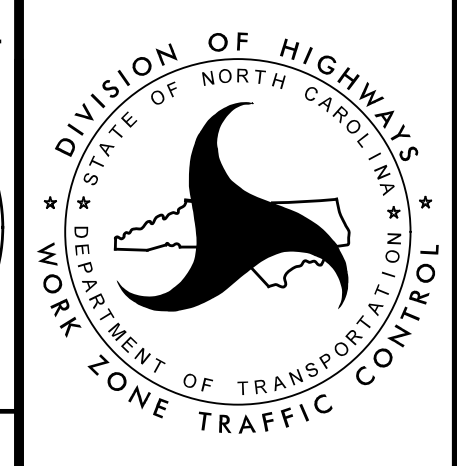
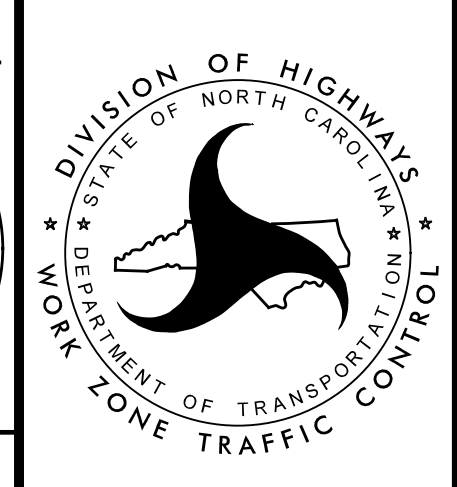
SEPI
ENGINEERING & CONSTRUCTION

1025 Wade Avenue
Raleigh, NC 27605
Tel: 919-789-9977
Fax: 919-789-9591
License: C-2197

APPROVED: *Steven D. Miller*
DATE: 7/31/2017

SEAL

**DOCUMENT NOT CONSIDERED FINAL
UNLESS ALL SIGNATURES COMPLETED**



**I-95 & I-40
DETOUR**

5/24/2017 10:58:00 I-5781\TP\Tr-off\I-5781\TMP-9.dgn
X:\2017\SET\1058.00 I-5781\TP\Tr-off\I-5781\TMP-9.dgn
ibauman