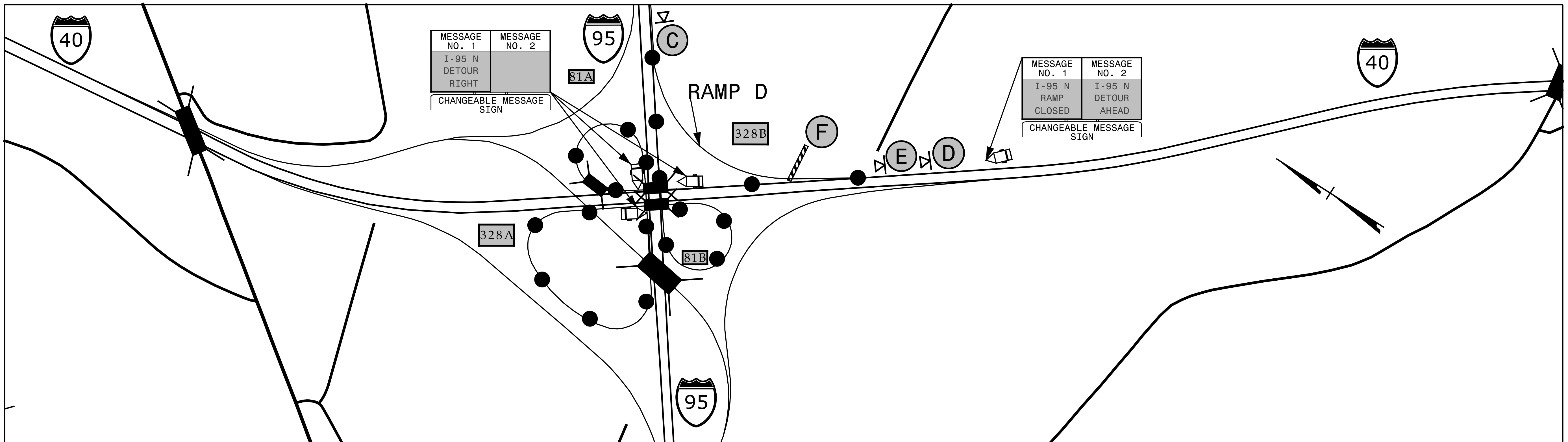
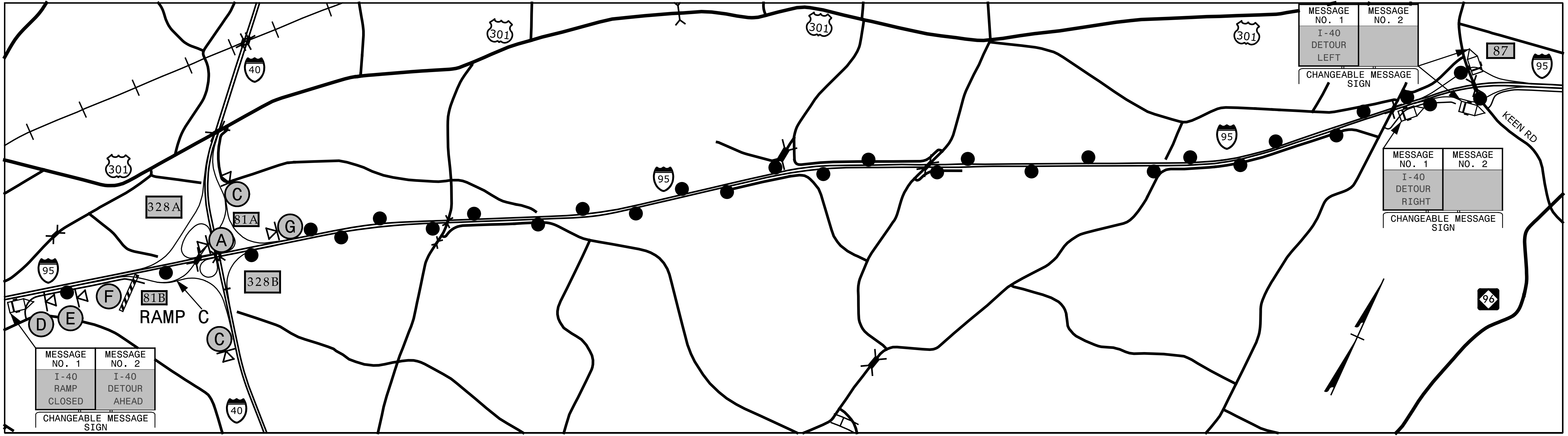



EXIT 328B RAMP D - I-40 / I-95



EXIT 81B RAMP C - I-40 / I-95



5/24/2017 10:05:00 AM I:\5781\TP\Tr-off\I-5781-TMP-8.dgn
X:\2017\SET\1.058.00 I-5781\TP\Tr-off\I-5781-TMP-8.dgn
ibauman


 OFF SITE DETOUR ROUTE
 SEE TMP-2 FOR SIGN LEGEND
 SEE TMP-13 FOR RAMP CLOSURE TYPICAL

SEPI
ENGINEERING & CONSTRUCTION

1025 Wade Avenue
Raleigh, NC 27605
Tel: 919-789-9977
Fax: 919-789-9591
License: C-2197

APPROVED: *Steven D. Miller*
1583A2932284A

DATE: 7/31/2017

SEAL

**DOCUMENT NOT CONSIDERED FINAL
UNLESS ALL SIGNATURES COMPLETED**



**I-95 & I-40
DETOUR**