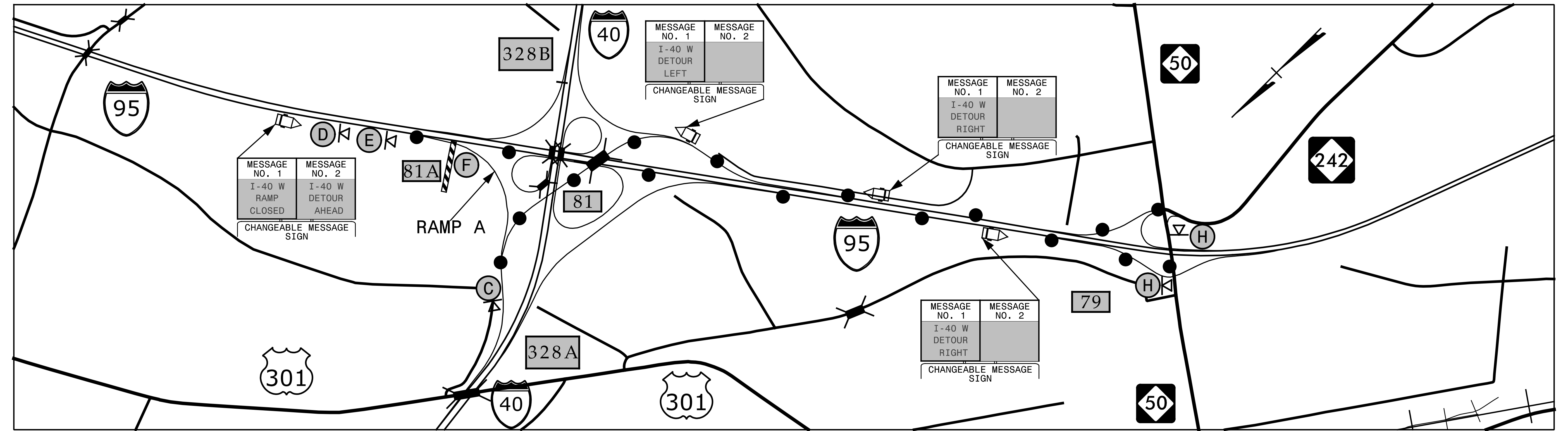
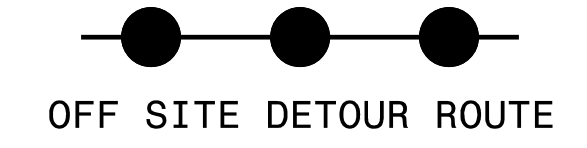
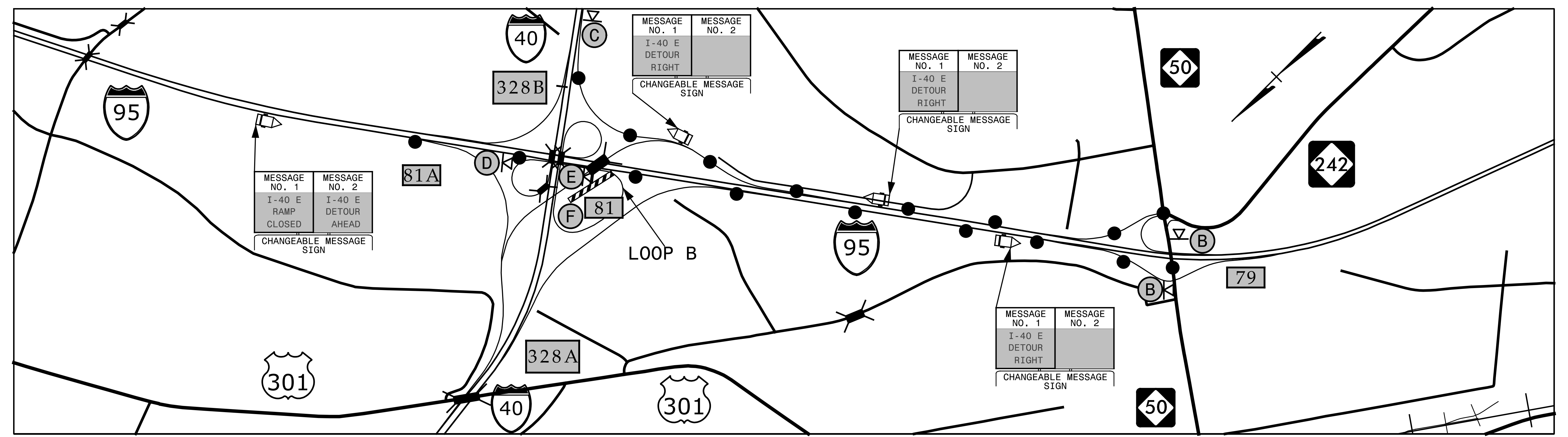


EXIT 81A RAMP A - I-40 / I-95



EXIT 81B LOOP B - I-40 / I-95



SEE TMP-2 FOR SIGN LEGEND
SEE TMP-13 FOR RAMP CLOSURE TYPICAL

SEPI
ENGINEERING & CONSTRUCTION

1025 Wade Avenue
Raleigh, NC 27605
Tel: 919-789-9977
Fax: 919-789-9591
License: C-2197

APPROVED: *Steven V. Miller*
DATE: 7/31/2017

SEAL

DOCUMENT NOT CONSIDERED FINAL UNLESS ALL SIGNATURES COMPLETED



I-95 & I-40 DETOUR

DEPARTMENT OF TRANSPORTATION
STATE OF NORTH CAROLINA
WORK ZONE TRAFFIC CONTROL

5/24/2017 10:58:00 I-5781\TP\Tr-off\I-5781\TMP-7.dgn
X:\2017\SET\105800 I-5781\TP\Tr-off\I-5781\TMP-7.dgn
ibauman