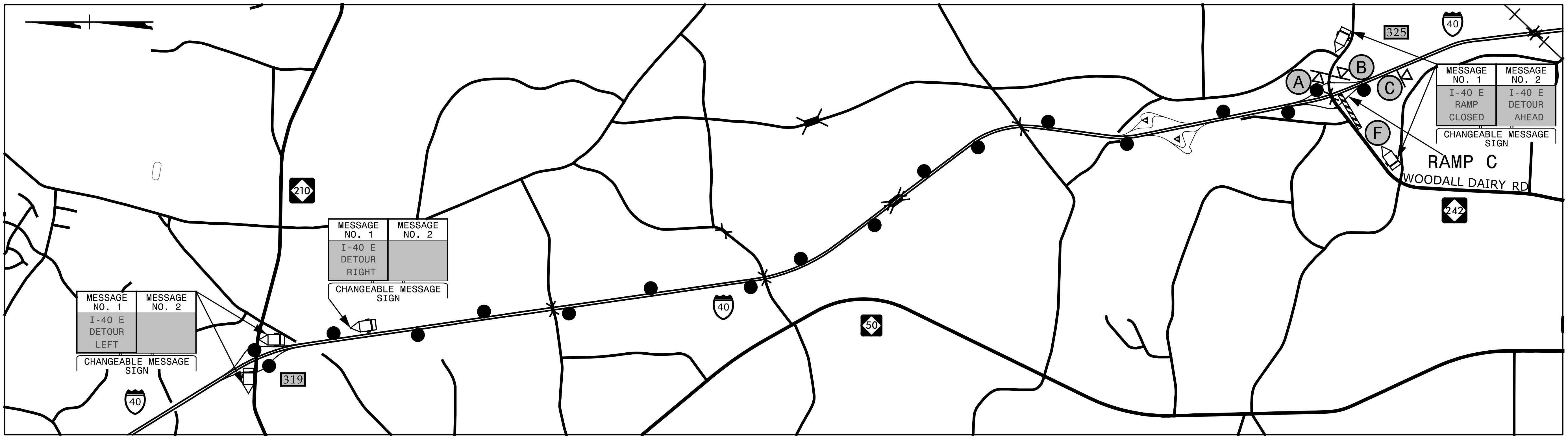
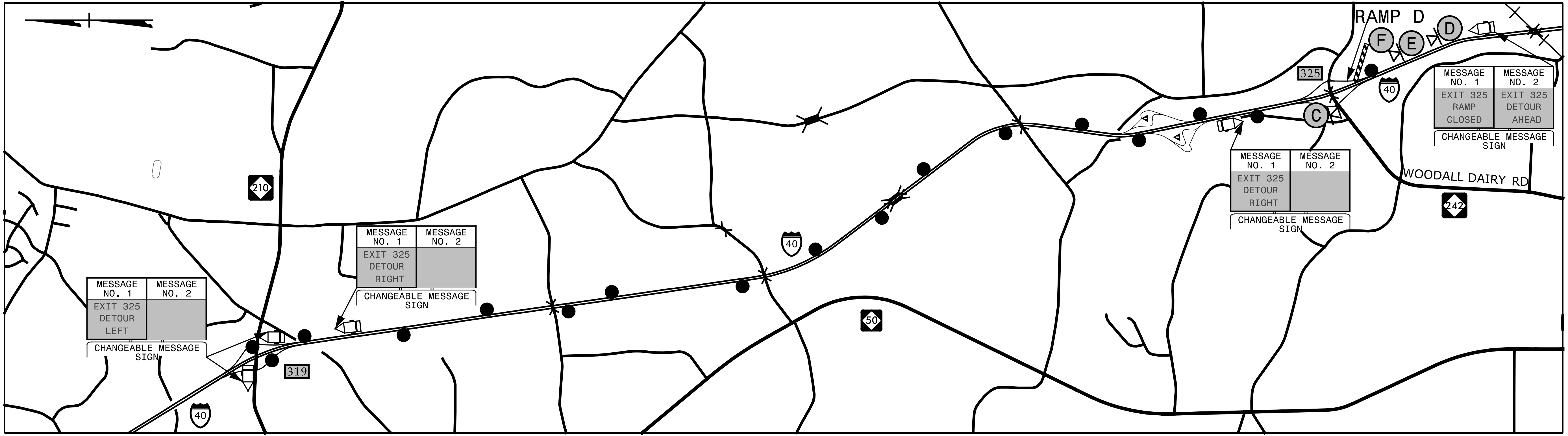


EXIT 325 RAMP C - I-40 / NC 242

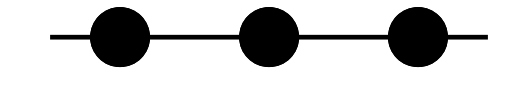
PROJ. REFERENCE NO.	SHEET NO.
I-5781	TMP-5



EXIT 325 RAMP D - I-40 / NC 242



5/9/2017 11:05:00 I-5781\TP\Tr-off\I-5781-TMP-5.dgn
X:\2017\SET\1058.00 I-5781\TP\Tr-off\I-5781-TMP-5.dgn
ibauman


 OFF SITE DETOUR ROUTE
 SEE TMP-2 FOR SIGN LEGEND
 SEE TMP-13 FOR RAMP CLOSURE TYPICAL

SEPI
ENGINEERING & CONSTRUCTION

1025 Wade Avenue
Raleigh, NC 27605
Tel: 919-789-9977
Fax: 919-789-9591
License: C-2197

DocuSigned by:
Steven V. Miller
1583A49322841A

APPROVED: _____
DATE: 7/31/2017

SEAL

**DOCUMENT NOT CONSIDERED FINAL
UNLESS ALL SIGNATURES COMPLETED**



**I-40 & NC 242
DETOUR**