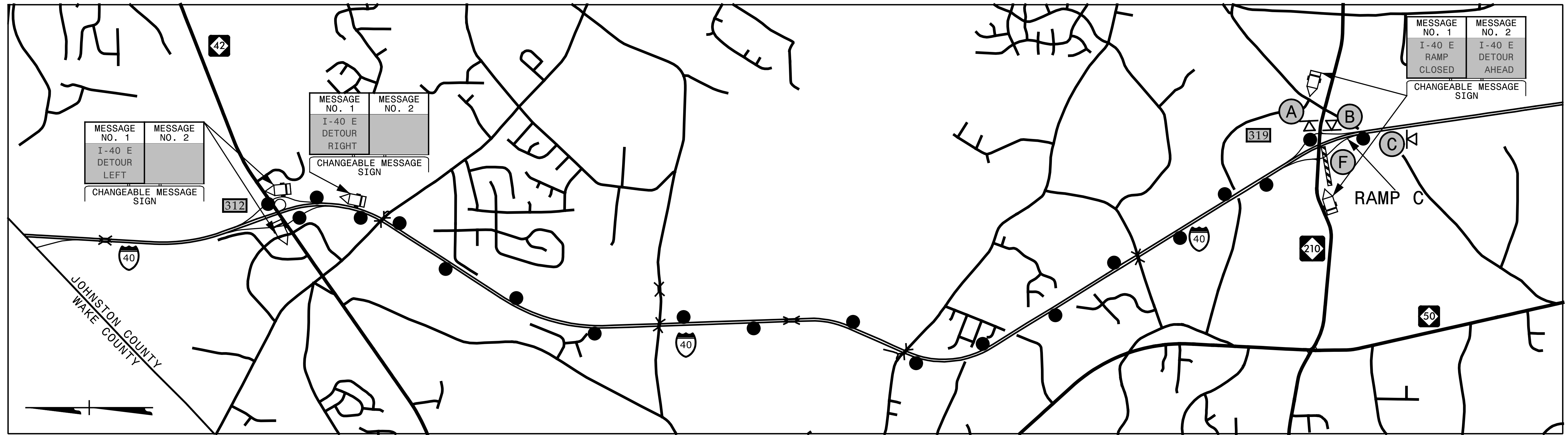
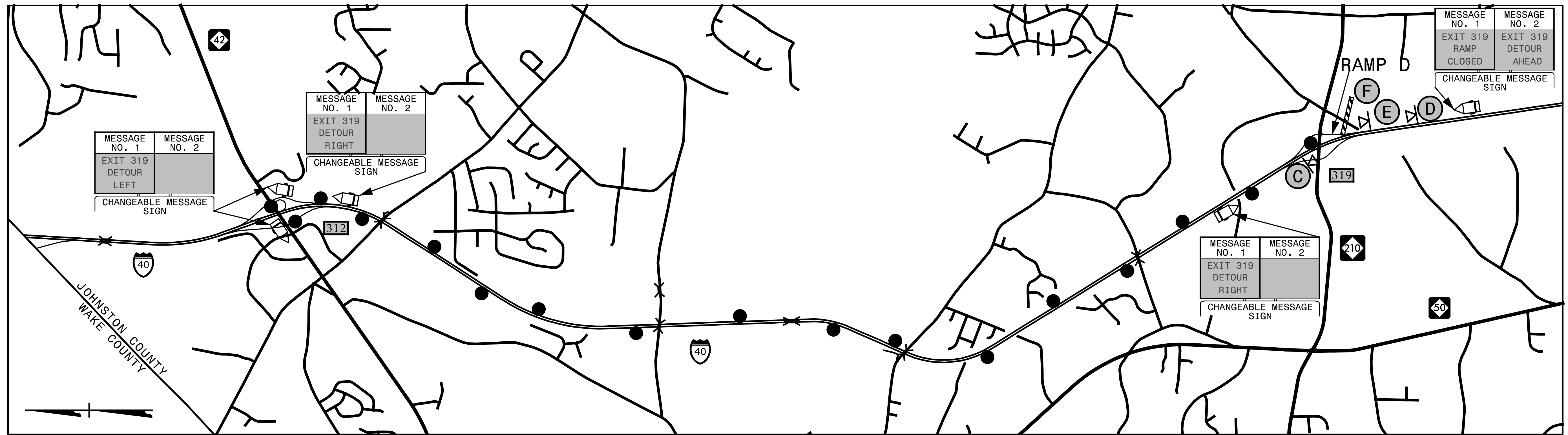


### EXIT 319 RAMP C - I-40 / NC 210

PROJ. REFERENCE NO.	SHEET NO.
I-5781	TMP-4



### EXIT 319 RAMP D - I-40 / NC 210



5/9/2017 10:58:00 I-5781\TP\Tr-off\io\TMP\N-5781\TMP-4.dgn  
X:\2017\SET\105800 I-5781\TP\Tr-off\io\TMP\N-5781\TMP-4.dgn  
ibauman

● — ● — ●  
OFF SITE DETOUR ROUTE

SEE TMP-2 FOR SIGN LEGEND  
SEE TMP-13 FOR RAMP CLOSURE TYPICAL

**SEPI**  
ENGINEERING & CONSTRUCTION

1025 Wade Avenue  
Raleigh, NC 27605  
Tel: 919-789-9977  
Fax: 919-789-9591  
License: C-2197

APPROVED: *Steven D. Miller*  
DATE: 7/31/2017

SEAL

DOCUMENT NOT CONSIDERED FINAL  
UNLESS ALL SIGNATURES COMPLETED



DIVISION OF HIGHWAYS  
STATE OF NORTH CAROLINA  
DEPARTMENT OF TRANSPORTATION

WORK ZONE TRAFFIC CONTROL

I-40 & NC 210  
DETOUR