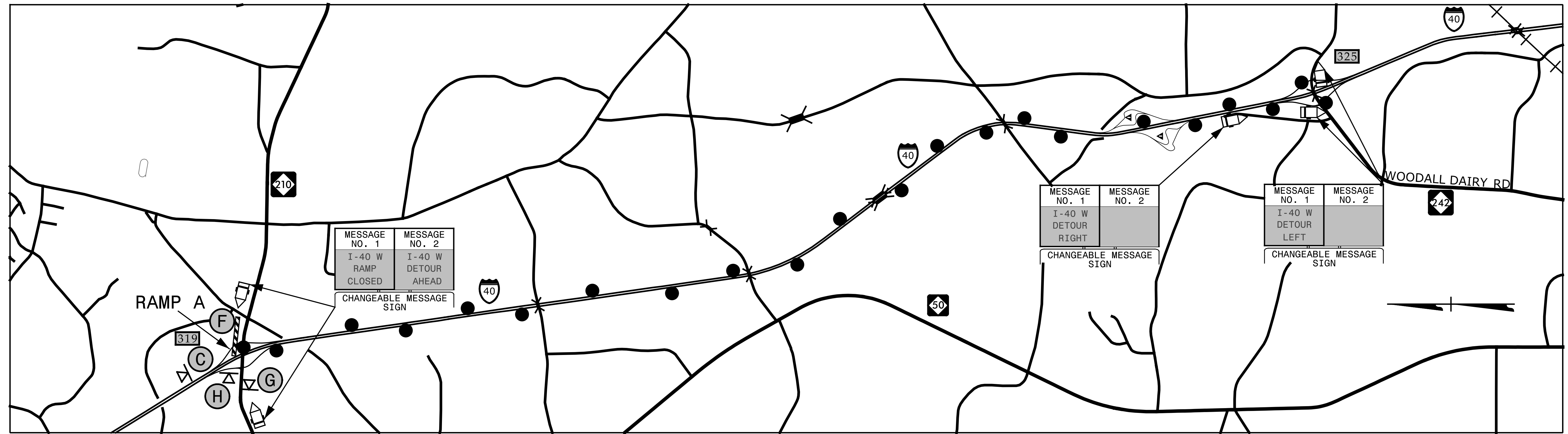
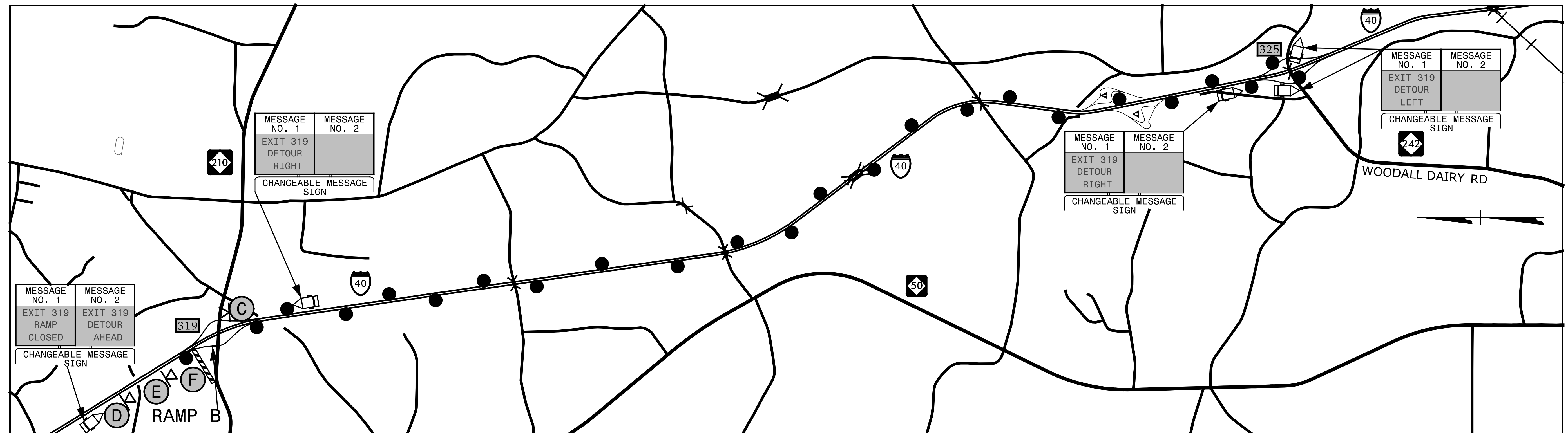


EXIT 319 RAMP A - I-40 / NC 210

PROJ. REFERENCE NO.	SHEET NO.
I-5781	TMP-3



EXIT 319 RAMP B - I-40 / NC 210

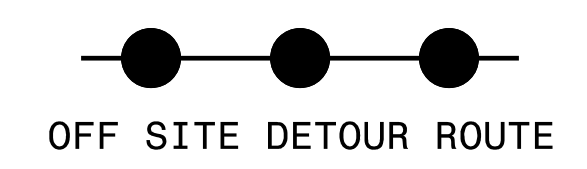


MESSAGE NO. 1	MESSAGE NO. 2
EXIT 319 RAMP CLOSED	EXIT 319 DETOUR AHEAD

MESSAGE NO. 1	MESSAGE NO. 2
EXIT 319 DETOUR RIGHT	

MESSAGE NO. 1	MESSAGE NO. 2
EXIT 319 DETOUR RIGHT	

MESSAGE NO. 1	MESSAGE NO. 2
EXIT 319 DETOUR LEFT	



SEE TMP-2 FOR SIGN LEGEND
SEE TMP-13 FOR RAMP CLOSURE TYPICAL

SEPI
ENGINEERING & CONSTRUCTION

1025 Wade Avenue
Raleigh, NC 27605
Tel: 919-789-9977
Fax: 919-789-9591
License: C-2197

APPROVED: *Steven D. Miller*
DATE: 7/31/2017

SEAL

**DOCUMENT NOT CONSIDERED FINAL
UNLESS ALL SIGNATURES COMPLETED**



**I-40 & NC 210
DETOUR**

5/9/2017 11:58:00 I-5781\TP\T\off\I-5781\TMP-3.dgn
X:\2017\SET\I-5781\TP\T\off\I-5781\TMP-3.dgn
ibauman