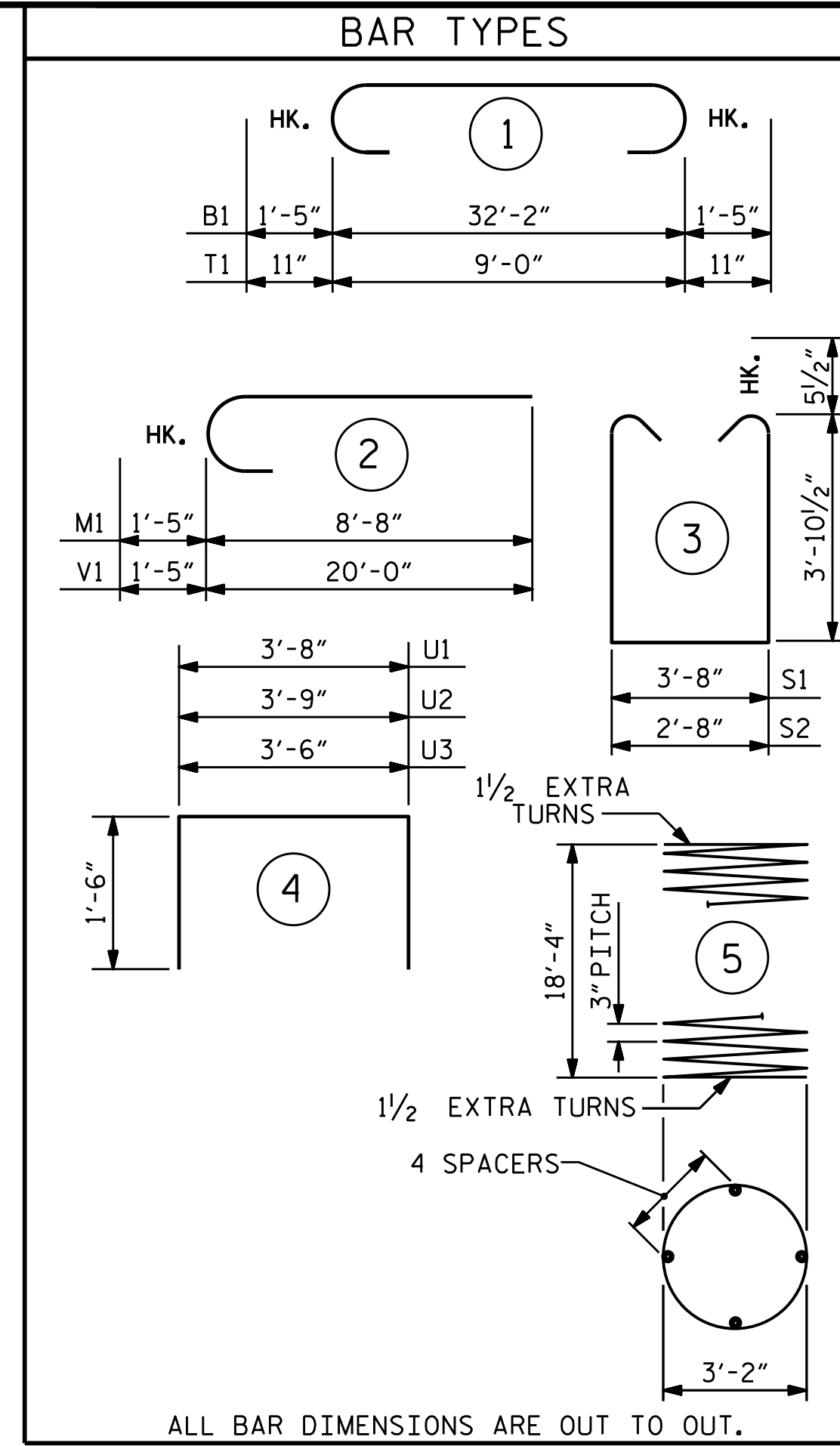
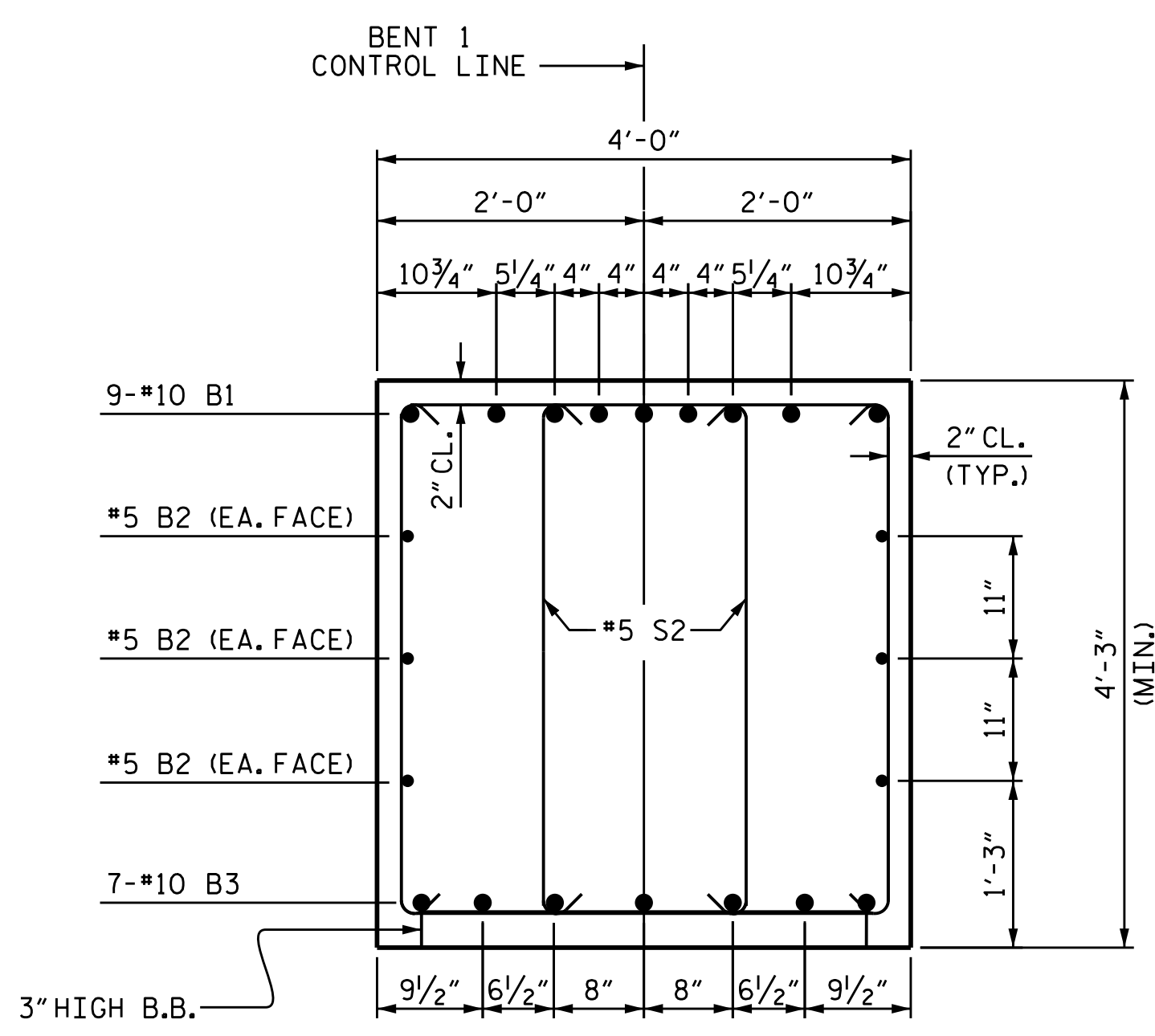


PLAN OF FOOTINGS & COLUMNS

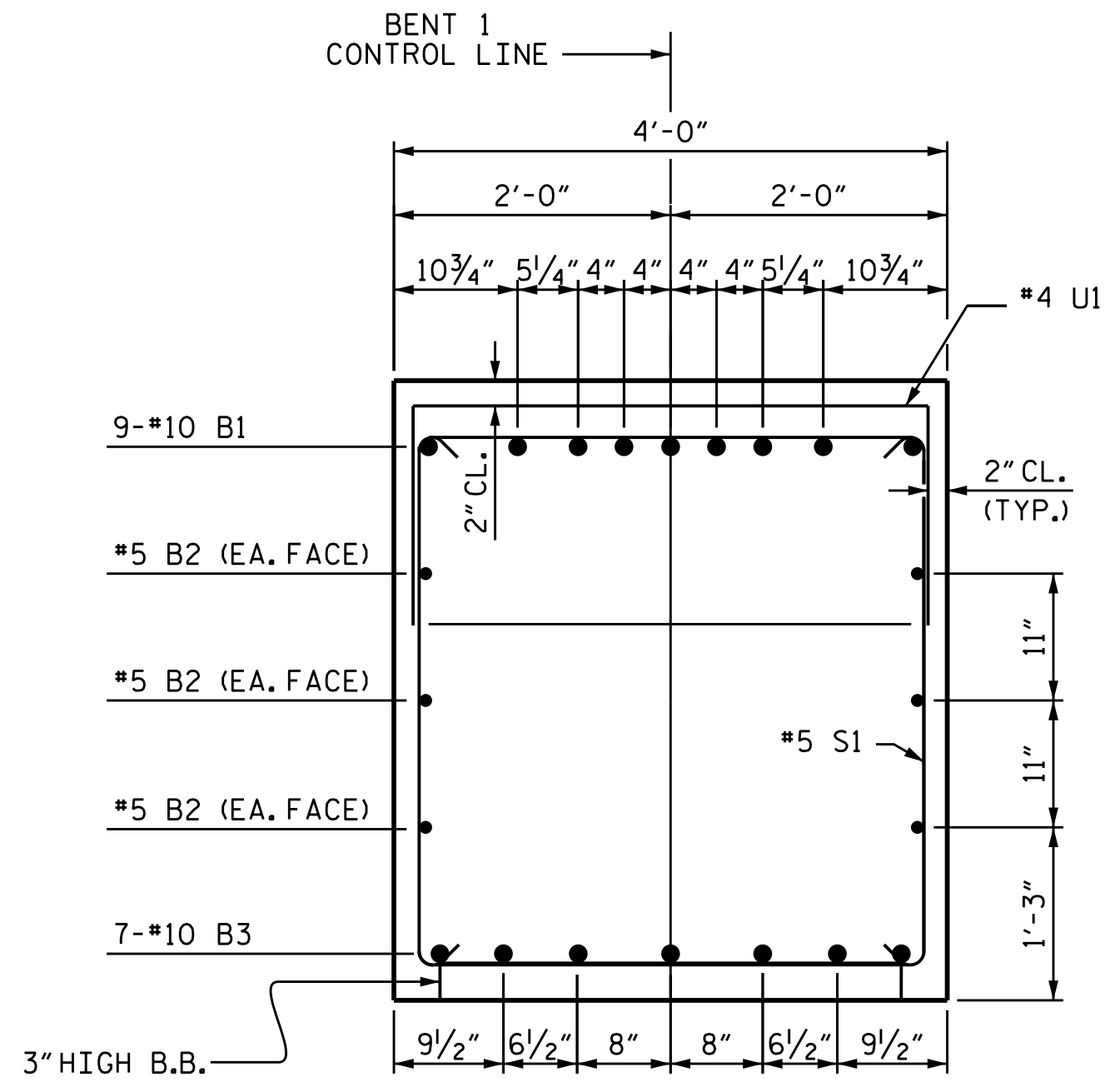
PILES, REINFORCING STEEL, DIMENSIONS ARE TYPICAL FOR EACH COLUMN AND FOOTING.



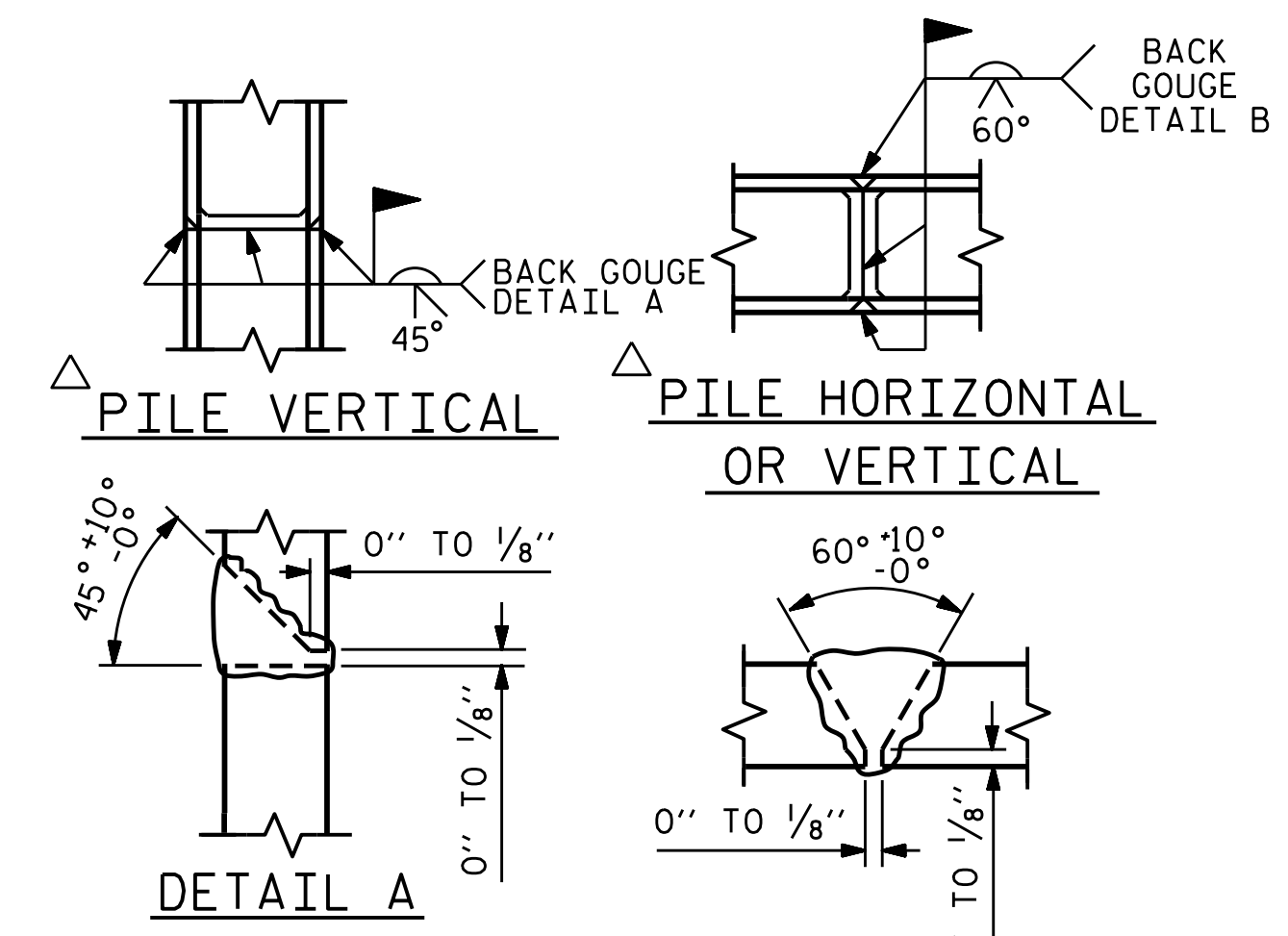
BILL OF MATERIAL					
BAR NO.	SIZE	TYPE	LENGTH	WEIGHT	
B1	#10	1	35'-0"	1355	
B2	#5	STR	32'-4"	202	
B3	#10	STR	32'-4"	974	
M1	#10	2	10'-1"	1041	
S1	#5	3	12'-4"	347	
S2	#5	3	11'-4"	378	
T1	#8	1	10'-10"	1967	
T2	#6	STR	9'-0"	541	
U1	#4	4	6'-8"	125	
U2	#4	4	6'-9"	27	
U3	#4	4	6'-6"	35	
V1	#10	2	21'-5"	2212	
REINFORCING STEEL			LBS.	9,204	
SP-1	2	*	5	757'-4"	1012
SPIRAL COLUMN REINFORCING STEEL			LBS.	1,012	
* THE SP-1 SPIRAL REINFORCING STEEL SHALL BE W20 OR D-20 COLD DRAWN WIRE OR #4 PLAIN OR DEFORMED BAR.					
FOUNDATION EXCAVATION			LUMP SUM		
CLASS A CONCRETE					
POUR #1 (FOOTINGS)			C.Y.	25.1	
POUR #2 (COLUMNS)			C.Y.	12.9	
POUR #3 (CAP)			C.Y.	21.0	
TOTAL CLASS A CONCRETE			C.Y.	59.0	
HP 14 X 73 STEEL PILES			LIN. FT.	350	
No.: 14					
PILE DRIVING EQUIPMENT SETUP FOR HP 14 X 73 STEEL PILES				14 EA.	
STEEL PILE POINTS				14 EA.	



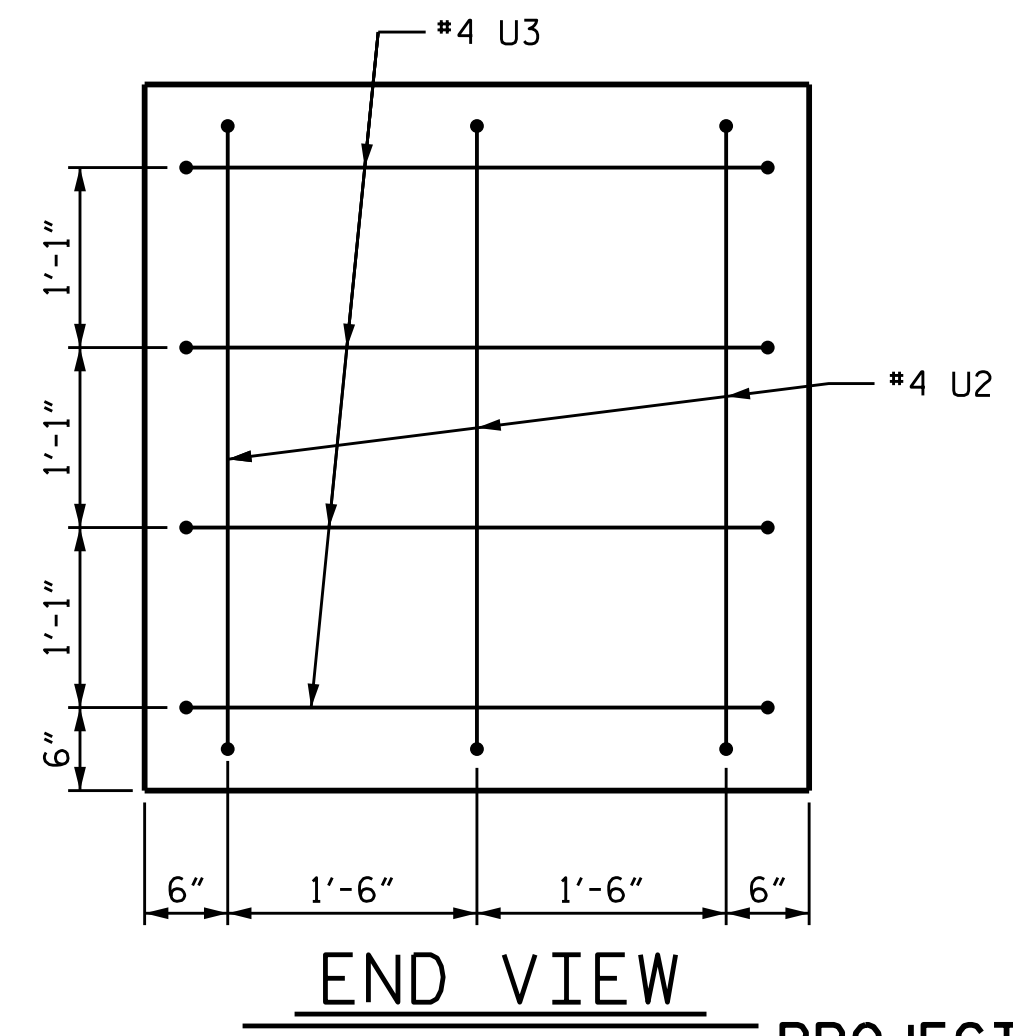
SECTION A-A



SECTION B-B



PILE SPLICE DETAILS



END VIEW

PROJECT NO. U-2579C
 FORSYTH COUNTY
 STATION: 21+27.27 -Y2-

SHEET 2 OF 2



STATE OF NORTH CAROLINA
 DEPARTMENT OF TRANSPORTATION
 RALEIGH
 SUBSTRUCTURE
 BENT 1

DRAWN BY: J. K. BOWLES DATE: 5/17/16
 CHECKED BY: K. D. LAYNE DATE: 7/22/16
 DESIGN ENGINEER OF RECORD: J. K. BOWLES DATE: 7/22/16

DOCUMENT NOT CONSIDERED FINAL UNLESS ALL SIGNATURES COMPLETED

REVISIONS						SHEET NO.	
NO.	BY:	DATE:	NO.	BY:	DATE:	S2-25	
1			3			TOTAL SHEETS 30	
2			4				