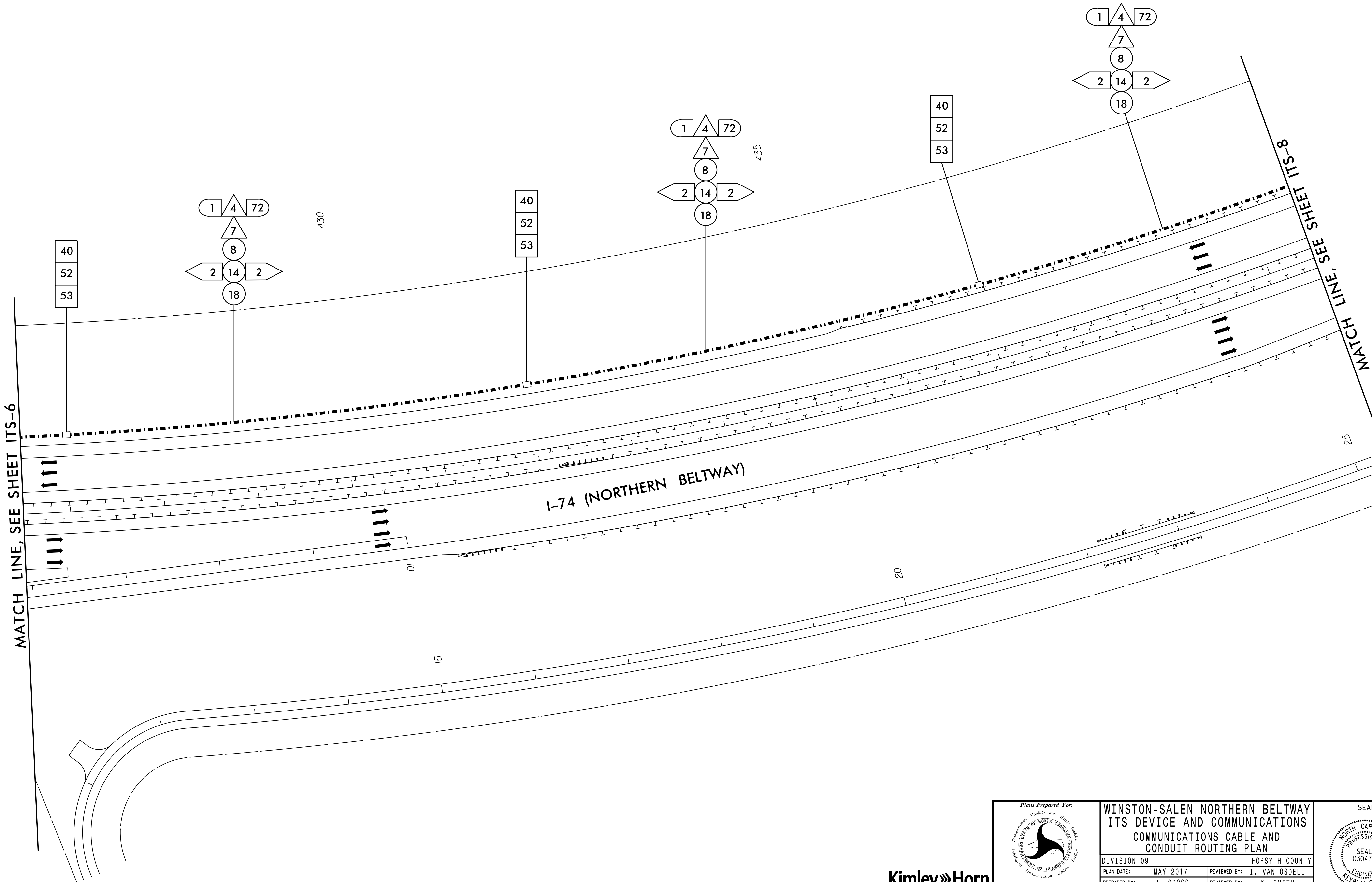
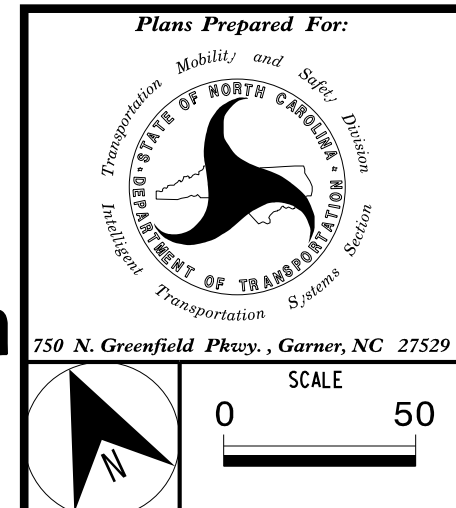


NOTE:
1. MAINTAIN A MINIMUM OF SIX (6) FEET FROM THE EDGE OF PAVEMENT WHEN TRENCHING PARALLEL TO THE ROADWAY.



5/1/2017 K:\ARL\TPTD\ITS\01036384 - U-2579C ITS\Plans\U2579c_ITS_psh7.dgn

Kimley»Horn
 NC License #F-0102
 421 Fayetteville St., Suite 600
 Raleigh, NC 27636
 Tel: (919) 677-2000
 Fax: (919) 677-2050



WINSTON-SALEN NORTHERN BELTWAY ITS DEVICE AND COMMUNICATIONS CABLE AND CONDUIT ROUTING PLAN	
DIVISION 09	FORSYTH COUNTY
PLAN DATE: MAY 2017	REVIEWED BY: I. VAN OSDELL
PREPARED BY: J. CROSS	REVIEWED BY: K. SMITH
REVISIONS	INIT. DATE

SEAL

DocuSigned By:
Kevin W. Smith
0688E04E3B0440F
5/3/2017
SIGNATURE DATE
CADD Filename:

