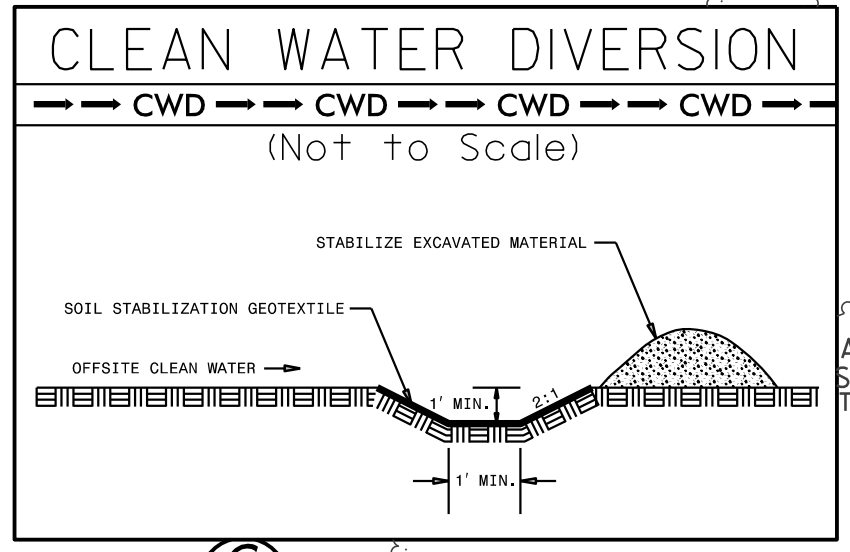


PROJECT REFERENCE NO.	SHEET NO.
U-2579C	EC-20/CONST.04
RW SHEET NO.	
ROADWAY DESIGN ENGINEER	HYDRAULICS ENGINEER
DOCUMENT NOT CONSIDERED FINAL UNLESS ALL SIGNATURES COMPLETED	

-Y3- -Y4-
 PI Sta 29+34.40 PI Sta 11+82.16
 $\Delta = 30'12"45.2"$ (RT) $\Delta = 19'40"26.4"$ (LT)
 $D = 2'58"35.1"$ $D = 15'54"55.8"$
 $L = 1,015.07'$ $L = 123.62'$
 $T = 519.63'$ $T = 62.42'$
 $R = 1,925.00'$ $R = 360.00'$
 SE = 05
 RO = SEE PLANS

END CONSTRUCTION
 -Y3- POT STA. 26+50.00



48 x 12 x 3
 ID 4.2

BEGIN TIP PROJECT U-2579C
BEGIN GRADING
 -L- POT STA. 373+00.00

BEGIN CONSTRUCTION
 -Y3- POT STA. 13+25.00

BEGIN CONSTRUCTION
 -L- POT STA. 366+00.00

BEGIN CONSTRUCTION
 -Y4- POT STA. 10+10.00

Place Matting for Erosion Control
 on Slope as Work Allows.
 Sta. 373+00 to Sta. 377+00 -L- RT
 Sta. 373+00 to Sta. 377+00 -L- LT

PAVED SHOULDER
 NOTE:
 FOR -L- PROFILE, SEE SHEETS 15 & 16
 FOR -Y3- PROFILE, SEE SHEET 32
 FOR -Y4- PROFILE, SEE SHEET 32
 FOR DRAINAGE DETAILS, SEE SHEETS 2D-1 TO 2D-4

