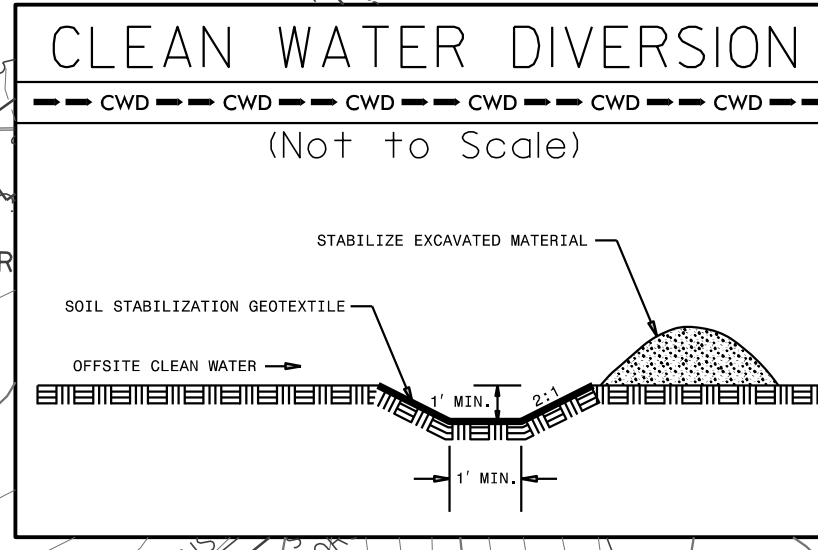


PROJECT REFERENCE NO. R-2579C	SHEET NO. EC-05/CONST.05
ROADWAY DESIGN ENGINEER	HYDRAULICS ENGINEER
DOCUMENT NOT CONSIDERED FINAL UNLESS ALL SIGNATURES COMPLETED	



29 x 58 x 3
1.5 inch Skimmer
with 1.25 inch
Orifice Diameter
6 ft. weir
ID 5.1

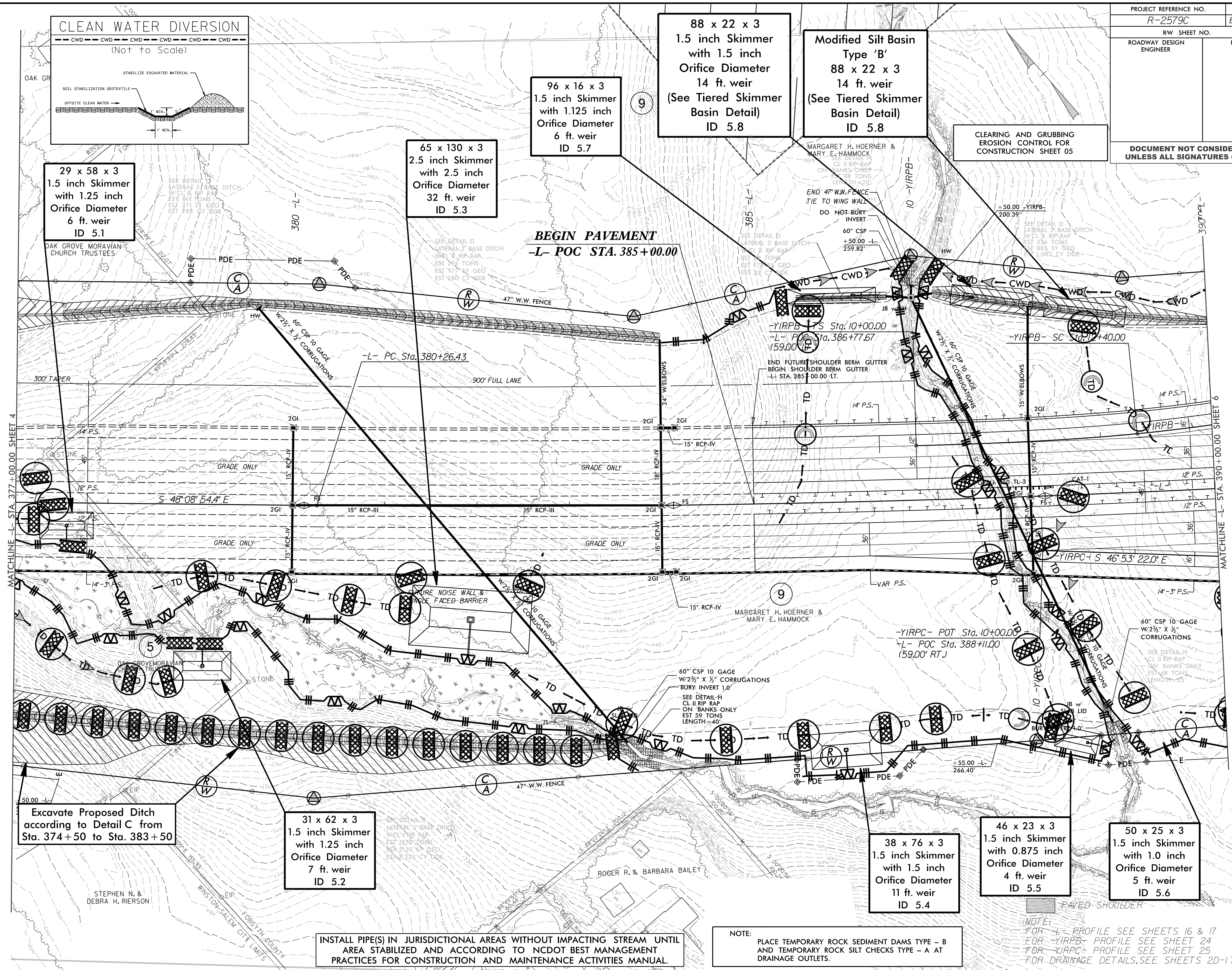
65 x 130 x 3
2.5 inch Skimmer
with 2.5 inch
Orifice Diameter
32 ft. weir
ID 5.3

96 x 16 x 3
1.5 inch Skimmer
with 1.125 inch
Orifice Diameter
6 ft. weir
ID 5.7

88 x 22 x 3
1.5 inch Skimmer
with 1.5 inch
Orifice Diameter
14 ft. weir
(See Tiered Skimmer
Basin Detail)
ID 5.8

Modified Silt Basin
Type 'B'
88 x 22 x 3
14 ft. weir
(See Tiered Skimmer
Basin Detail)
ID 5.8

CLEARING AND GRUBBING
EROSION CONTROL FOR
CONSTRUCTION SHEET 05



Excavate Proposed Ditch
according to Detail C from
Sta. 374+50 to Sta. 383+50

31 x 62 x 3
1.5 inch Skimmer
with 1.25 inch
Orifice Diameter
7 ft. weir
ID 5.2

38 x 76 x 3
1.5 inch Skimmer
with 1.5 inch
Orifice Diameter
11 ft. weir
ID 5.4

46 x 23 x 3
1.5 inch Skimmer
with 0.875 inch
Orifice Diameter
4 ft. weir
ID 5.5

50 x 25 x 3
1.5 inch Skimmer
with 1.0 inch
Orifice Diameter
5 ft. weir
ID 5.6

INSTALL PIPE(S) IN JURISDICTIONAL AREAS WITHOUT IMPACTING STREAM UNTIL
AREA STABILIZED AND ACCORDING TO NCDOT BEST MANAGEMENT
PRACTICES FOR CONSTRUCTION AND MAINTENANCE ACTIVITIES MANUAL.

NOTE:
PLACE TEMPORARY ROCK SEDIMENT DAMS TYPE - B
AND TEMPORARY ROCK SILT CHECKS TYPE - A AT
DRAINAGE OUTLETS.

NOTE:
FOR -L- PROFILE SEE SHEETS 16 & 17
FOR -YIRPB- PROFILE SEE SHEET 24
FOR -YIRPC- PROFILE SEE SHEET 25
FOR DRAINAGE DETAILS, SEE SHEETS 2D-1 TO 2D-4