

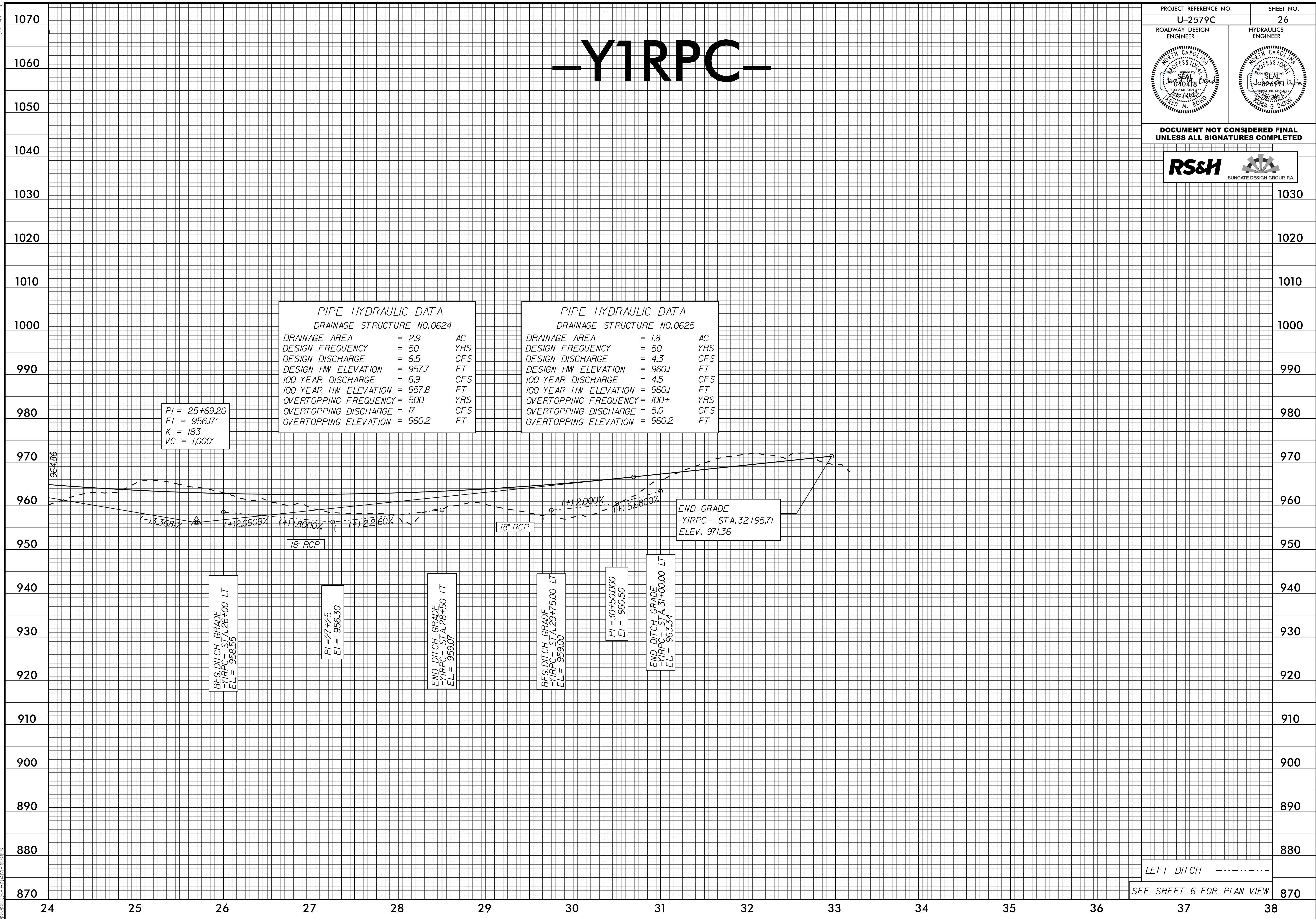
5/14/99

PROJECT REFERENCE NO. <b>U-2579C</b>	SHEET NO. <b>26</b>
ROADWAY DESIGN ENGINEER	HYDRAULICS ENGINEER

DOCUMENT NOT CONSIDERED FINAL  
UNLESS ALL SIGNATURES COMPLETED



# -YIRPC-



PIPE HYDRAULIC DATA  
DRAINAGE STRUCTURE NO.0624

DRAINAGE AREA	= 2.9	AC
DESIGN FREQUENCY	= 50	YRS
DESIGN DISCHARGE	= 6.5	CFS
DESIGN HW ELEVATION	= 957.7	FT
100 YEAR DISCHARGE	= 6.9	CFS
100 YEAR HW ELEVATION	= 957.8	FT
OVERTOPPING FREQUENCY	= 500	YRS
OVERTOPPING DISCHARGE	= 17	CFS
OVERTOPPING ELEVATION	= 960.2	FT

PIPE HYDRAULIC DATA  
DRAINAGE STRUCTURE NO.0625

DRAINAGE AREA	= 1.8	AC
DESIGN FREQUENCY	= 50	YRS
DESIGN DISCHARGE	= 4.3	CFS
DESIGN HW ELEVATION	= 960.1	FT
100 YEAR DISCHARGE	= 4.5	CFS
100 YEAR HW ELEVATION	= 960.1	FT
OVERTOPPING FREQUENCY	= 100+	YRS
OVERTOPPING DISCHARGE	= 5.0	CFS
OVERTOPPING ELEVATION	= 960.2	FT

PI = 25+69.20  
EL = 956.17'  
K = 183  
VC = 1,000'

END GRADE  
-YIRPC- STA. 32+95.71  
ELEV. 971.36

BEG. DITCH GRADE  
-YIRPC- STA. 26+00 LT  
EL = 958.55

PI = 27+25  
EL = 956.30

END DITCH GRADE  
-YIRPC- STA. 28+50 LT  
EL = 959.07

BEG. DITCH GRADE  
-YIRPC- STA. 29+75.00 LT  
EL = 959.00

PI = 30+50.000  
EL = 960.50

END DITCH GRADE  
-YIRPC- STA. 31+00.00 LT  
EL = 963.34

LEFT DITCH - - - - -  
SEE SHEET 6 FOR PLAN VIEW

07 JUL 2017 15:35  
 P:\Projects\2017\1535\U-2579C-p1-YIRPC-26.dgn  
 11:35 AM  
 W. S. H.