

PROJECT REFERENCE NO. <b>U-2579C</b>	SHEET NO. <b>7</b>
RW SHEET NO.	
ROADWAY DESIGN ENGINEER	HYDRAULICS ENGINEER
<b>DOCUMENT NOT CONSIDERED FINAL UNLESS ALL SIGNATURES COMPLETED</b>	

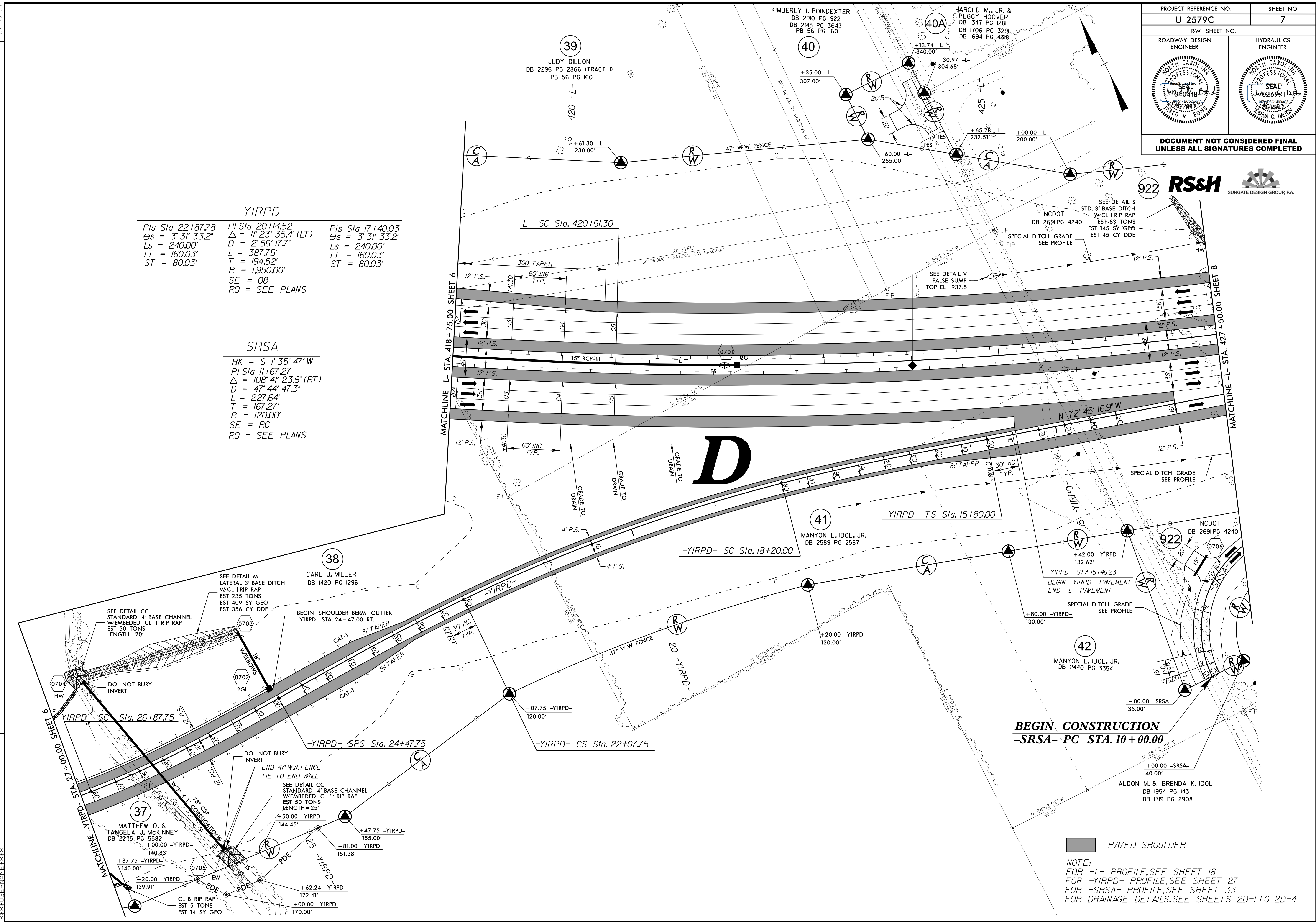


**-YIRPD-**

Pls Sta 22+87.78 Os = 3' 31" 33.2" Ls = 240.00' LT = 160.03' ST = 80.03'	PI Sta 20+14.52 Δ = 11' 23" 35.4" (LT) D = 2' 56" 17.7" L = 387.75' T = 194.52' R = 1,950.00' SE = 08 RO = SEE PLANS	Pls Sta 17+40.03 Os = 3' 31" 33.2" Ls = 240.00' LT = 160.03' ST = 80.03'
--	---	--

**-SRSA-**

BK = S 1' 35" 47" W  
PI Sta 11+67.27  
Δ = 108' 41" 23.6" (RT)  
D = 47' 44" 47.3"  
L = 227.64'  
T = 167.27'  
R = 120.00'  
SE = RC  
RO = SEE PLANS



**BEGIN CONSTRUCTION  
-SRSA- PC STA. 10+00.00**

PAVED SHOULDER

NOTE:  
FOR -L- PROFILE, SEE SHEET 18  
FOR -YIRPD- PROFILE, SEE SHEET 27  
FOR -SRSA- PROFILE, SEE SHEET 33  
FOR DRAINAGE DETAILS, SEE SHEETS 2D-1 TO 2D-4

REVISIONS

8.17.99

05-JUL-2017 15:21  
P5-Hobas-2579C-psh-7.dgn  
\$\$\$\$\$\$