

**This electronic collection of documents is provided  
for the convenience of the user  
and is Not a Certified Document –**

**The documents contained herein were originally issued  
and sealed by the individuals whose names and license  
numbers appear on each page, on the dates appearing  
with their signature on that page.**

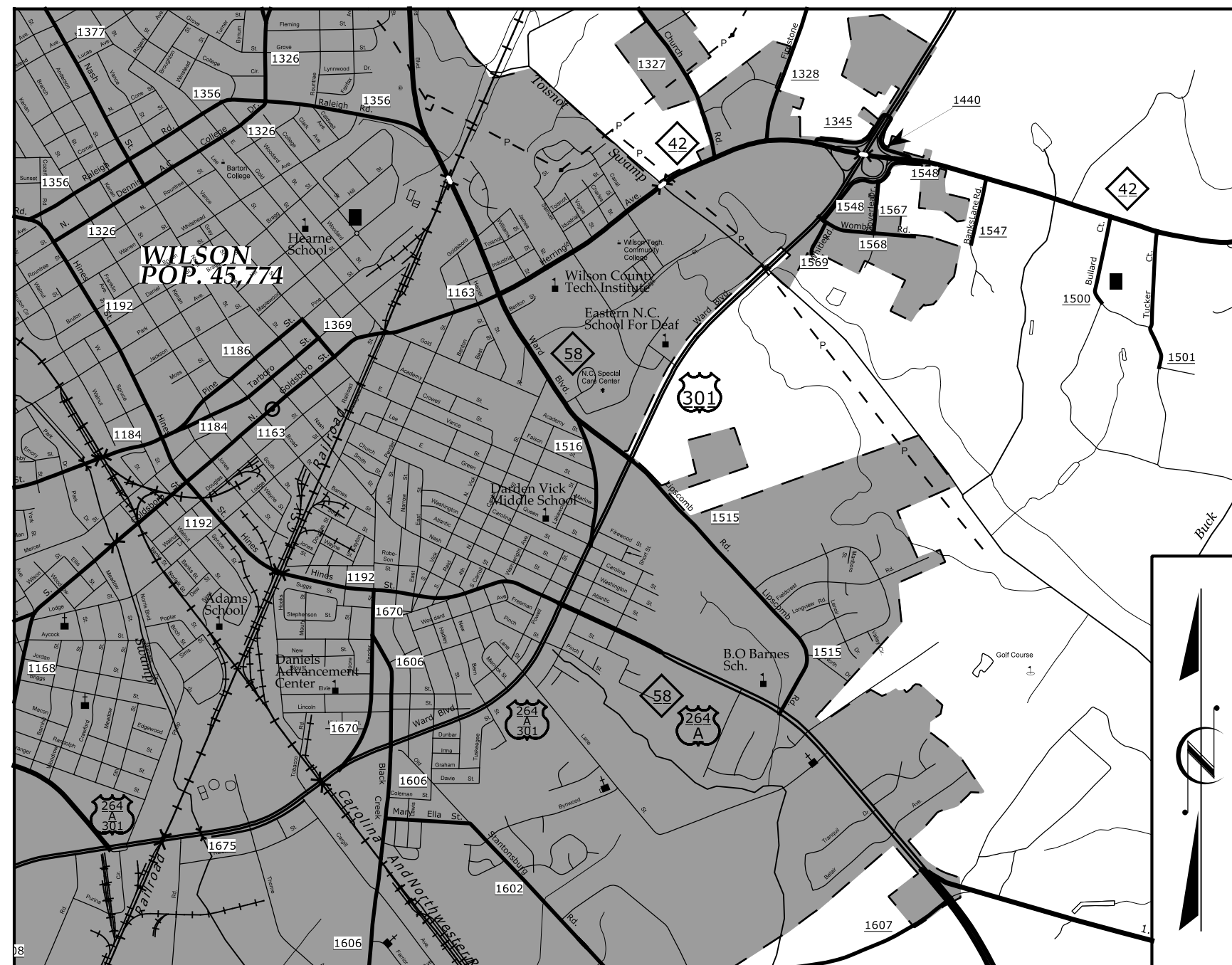
**This file or an individual page  
shall not be considered a certified document.**

STATE OF NORTH CAROLINA  
DIVISION OF HIGHWAYS

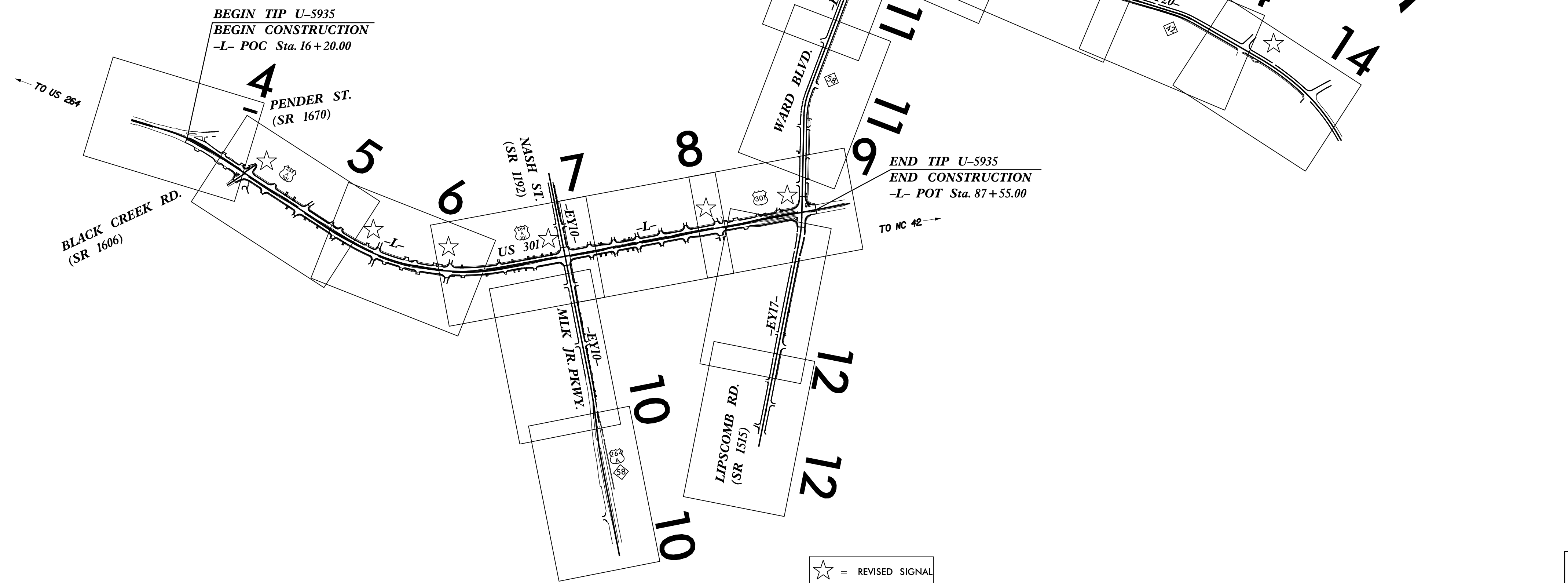
# UTILITY CONSTRUCTION PLANS WILSON COUNTY

LOCATION: US 301 FROM BLACK CREEK ROAD (SR 1606) TO  
TO LIPSCOMB ROAD (SR 1515)

TYPE OF WORK: WATER AND SANITARY SEWER RELOCATION

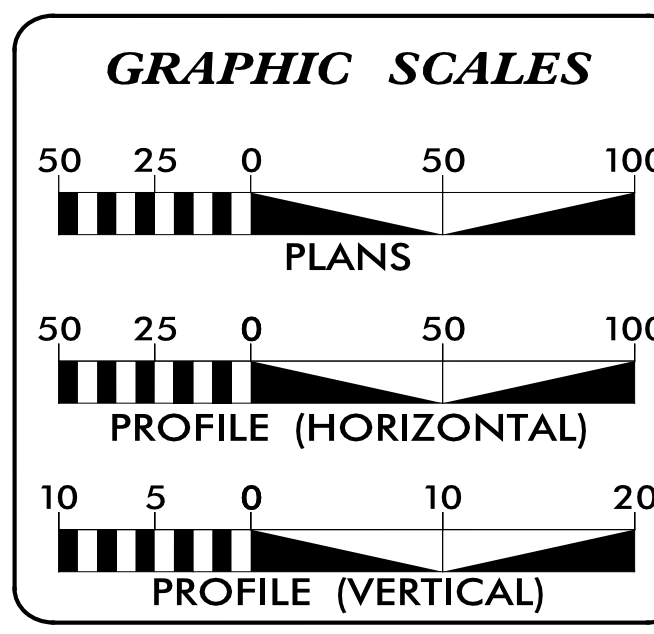


VICINITY MAP



DOCUMENT NOT CONSIDERED FINAL  
UNTIL ALL SIGNATURES ARE COMPLETED

TIP PROJECT: U-5935



**INDEX OF SHEETS**

SHEET NO.:	DESCRIPTION:
UC-1	TITLE SHEET
UC-2	UTILITY SYMBOLOGY
UC-3	NOTES
UC-3A THRU UC-3E	DETAILS
UC-4 THRU UC-14	UTILITY CONSTRUCTION SHEETS
UC-15 THRU UC-19	PROFILE SHEETS

**WATER AND SEWER OWNERS ON PROJECT**

(A) WATER - CITY OF WILSON  
(B) SANITARY SEWER - CITY OF WILSON

PREPARED IN THE OFFICE OF  
**Michael Baker Engineering, Inc.**  
Michael Baker  
8000 Regency Pkwy  
Suite 600  
Cary, NC 27518  
NC License: F-1084

VAN JOHNSON CONSULTANT CONTACT #1  
TODD BUCKNER, PE CONSULTANT CONTACT #2

SEAL

8/2/2017

**DIVISION OF HIGHWAYS  
UTILITIES UNIT**  
1555 MAIL SERVICES CENTER  
RALEIGH, NC 27699-1555  
PHONE (919) 707-6690  
FAX (919) 250-4151

STATE OF NORTH CAROLINA  
DIVISION OF HIGHWAYS

DOCUMENT NOT CONSIDERED FINAL  
UNTIL ALL SIGNATURES ARE COMPLETED

PROJECT REFERENCE NO. U-5935 SHEET NO. UC-2

UTILITIES PLAN SHEET SYMBOLS

PROPOSED WATER SYMBOLS

Water Line (Sized as Shown)	----- 12" WL -----
11¼ Degree Bend	----- +-----
22½ Degree Bend	----- +X-----
45 Degree Bend	----- +X-----
90 Degree Bend	----- +-----
Plug	-----  -----
Tee	----- +-----
Cross	----- +-----
Reducer	----- ▶-----
Gate Valve	----- GV-----
Butterfly Valve	----- BV-----
Tapping Valve	----- TGV-----
Line Stop	----- LS-----
Line Stop with Bypass	----- LS/BP-----
Blow Off	----- BO-----
Fire Hydrant	----- PFH-----
Relocate Fire Hydrant	----- RFH-----
Remove Fire Hydrant	----- REM FH-----
Water Meter	----- PWM-----
Relocate Water Meter	----- PWM-----
Remove Water Meter	----- REM WM-----
Water Pump Station	----- PS(W)-----
RPZ Backflow Preventer	----- PRPZ-----
DCV Backflow Preventer	----- PBFP-----
Relocate RPZ Backflow Preventer	----- RRPZ-----
Relocate DCV Backflow Preventer	----- RBFP-----

PROPOSED SEWER SYMBOLS

Gravity Sewer Line (Sized as Shown)	----- 12" SS -----
Force Main Sewer Line (Sized as Shown)	----- 12" FSS -----
Manhole (Sized per Note)	----- •-----
Sewer Pump Station	----- PS(SS)-----

PROPOSED MISCELLANEOUS UTILITIES SYMBOLS

Power Pole	----- 0-----
Telephone Pole	----- 0-----
Joint Use Pole	----- 0-----
Telephone Pedestal	----- TEL PED-----
Utility Line by Others (Type as Shown)	----- PROP. O/H. POW. LINES-----
Trenchless Installation	----- 12" TL INSTALL-----
Encasement by Open Cut	----- 24" ENCAS. BY OC-----
Encasement	----- 24" ENCASUREMENT-----

Thrust Block	-----  -----
Air Release Valve	----- AR-----
Utility Vault	----- UV-----
Concrete Pier	----- CP-----
Steel Pier	----- SP-----
Plan Note	----- NOTE-----
Pay Item Note	----- PAY ITEM-----

EXISTING UTILITIES SYMBOLS

Power Pole	----- •-----	*Underground Power Line	----- P-----
Telephone Pole	----- •-----	*Underground Telephone Cable	----- T-----
Joint Use Pole	----- •-----	*Underground Telephone Conduit	----- TC-----
Utility Pole	----- •-----	*Underground Fiber Optics Telephone Cable	----- T FO-----
Utility Pole with Base	----- □-----	*Underground TV Cable	----- TV-----
H-Frame Pole	----- •-----	*Underground Fiber Optics TV Cable	----- TV FO-----
Power Transmission Line Tower	----- ☒-----	*Underground Gas Pipeline	----- G-----
Water Manhole	----- ⊗-----	Aboveground Gas Pipeline	----- A/G Gas-----
Power Manhole	----- ⊗-----	*Underground Water Line	----- W-----
Telephone Manhole	----- ⊗-----	Aboveground Water Line	----- A/G Water-----
Sanitary Sewer Manhole	----- ⊗-----	*Underground Gravity Sanitary Sewer Line	----- SS-----
Hand Hole for Cable	----- ☒-----	Aboveground Gravity Sanitary Sewer Line	----- A/G Sanitary Sewer-----
Power Transformer	----- ☒-----	*Underground SS Forced Main Line	----- FSS-----
Telephone Pedestal	----- ☒-----	Underground Unknown Utility Line	----- ?UTL-----
CATV Pedestal	----- ☒-----	SUE Test Hole	----- •-----
Gas Valve	----- ◇-----	Water Meter	----- 0-----
Gas Meter	----- ◇-----	Water Valve	----- ⊗-----
Located Miscellaneous Utility Object	----- 0-----	Fire Hydrant	----- ◇-----
Abandoned According to Utility Records	----- AATUR-----	Sanitary Sewer Cleanout	----- ⊗-----
End of Information	----- E.O.I.-----		

\*For Existing Utilities  
Utility Line Drawn from Record (Type as Shown) -----  
Designated Utility Line (Type as Shown) -----

5/14/99

02-AUG-2017 13:24 UC-SHT\_02.dgn  
REV: 2/1/2012

# UTILITY CONSTRUCTION

DOCUMENT NOT CONSIDERED FINAL  
UNTIL ALL SIGNATURES ARE COMPLETED

**Michael Baker Engineering, Inc.**  
8000 Regency Pkwy  
Suite 600  
Cary, NC 27518  
NC License: F-1084

**Michael Baker**  
INTERNATIONAL

PROJECT REFERENCE NO.	SHEET NO.
U-5935	UC-3
DESIGNED BY:	
DRAWN BY:	
CHECKED BY:	
APPROVED BY:	
REVISED:	
NORTH CAROLINA DEPARTMENT OF TRANSPORTATION	
UTILITIES ENGINEERING SEC. PHONE: (919) 707-6690 FAX: (919) 250-4151	
UTILITY CONSTRUCTION PLANS ONLY	

## GENERAL NOTES:

1. THE PROPOSED UTILITY CONSTRUCTION SHALL MEET THE APPLICABLE REQUIREMENTS OF THE NC DEPARTMENT OF TRANSPORTATION'S "STANDARD SPECIFICATIONS FOR ROADS AND STRUCTURES" DATED JANUARY 2012.
2. THE EXISTING UTILITIES BELONG TO THE CITY OF WILSON .
3. ALL WATER LINES TO BE INSTALLED WITHIN COMPLIANCE OF THE RULES AND REGULATIONS OF THE NORTH CAROLINA DEPARTMENT OF ENVIRONMENTAL QUALITY, DIVISION OF WATER RESOURCES, PUBLIC WATER SUPPLY SECTION. ALL SEWER LINES TO BE INSTALLED WITHIN COMPLIANCE OF THE RULES AND REGULATIONS OF THE NORTH CAROLINA DEPARTMENT OF ENVIRONMENTAL QUALITY, DIVISION OF WATER RESOURCES, WATER QUALITY SECTION. PERFORM ALL WORK IN ACCORDANCE WITH THE APPLICABLE PLUMBING CODES.
4. THE UTILITY OWNER OWNS THE EXISTING UTILITY FACILITIES AND WILL OWN THE NEW UTILITY FACILITIES AFTER ACCEPTANCE BY THE DEPARTMENT. THE DEPARTMENT OWNS THE CONSTRUCTION CONTRACT AND HAS ADMINISTRATIVE AUTHORITY. COMMUNICATIONS AND DECISIONS BETWEEN THE CONTRACTOR AND UTILITY OWNER ARE NOT BINDING UPON THE DEPARTMENT OR THIS CONTRACT UNLESS AUTHORIZED BY THE ENGINEER. AGREEMENTS BETWEEN THE UTILITY OWNER AND CONTRACTOR FOR THE WORK THAT IS NOT PART OF THIS CONTRACT OR IS SECONDARY TO THIS CONTRACT ARE ALLOWED, BUT ARE NOT BINDING UPON THE DEPARTMENT.
5. PROVIDE ACCESS FOR THE DEPARTMENT PERSONNEL AND THE OWNER'S REPRESENTATIVES TO ALL PHASES OF CONSTRUCTION. NOTIFY DEPARTMENT PERSONNEL AND THE UTILITY OWNER TWO WEEKS PRIOR TO COMMENCEMENT OF ANY WORK AND ONE WEEK PRIOR TO SERVICE INTERRUPTION. KEEP UTILITY OWNERS' REPRESENTATIVES INFORMED OF WORK PROGRESS AND PROVIDE OPPORTUNITY FOR INSPECTION OF CONSTRUCTION AND TESTING.

6. THE PLANS DEPICT THE BEST AVAILABLE INFORMATION FOR THE LOCATION, SIZE, DEPTH, AND TYPE OF MATERIAL FOR ALL EXISTING UTILITIES. MAKE INVESTIGATIONS FOR DETERMINING THE EXACT LOCATION, SIZE, AND TYPE MATERIAL OF THE EXISTING FACILITIES AS NECESSARY FOR THE CONSTRUCTION OF THE PROPOSED UTILITIES AND FOR AVOIDING DAMAGE TO EXISTING FACILITIES. REPAIR ANY DAMAGE INCURRED TO EXISTING FACILITIES TO THE ORIGINAL OR BETTER CONDITION AT NO ADDITIONAL COST TO THE DEPARTMENT.
7. MAKE FINAL CONNECTIONS OF THE NEW WORK TO THE EXISTING SYSTEM WHERE INDICATED ON THE PLANS, AS REQUIRED TO FIT THE ACTUAL CONDITIONS, OR AS DIRECTED.
8. MAKE CONNECTIONS BETWEEN EXISTING AND PROPOSED UTILITIES AT TIMES MOST CONVENIENT TO THE PUBLIC, WITHOUT ENDANGERING THE UTILITY SERVICE, AND IN ACCORDANCE WITH THE UTILITY OWNER'S REQUIREMENTS. MAKE CONNECTIONS ON WEEKENDS, AT NIGHT, AND ON HOLIDAYS IF NECESSARY. COORDINATE ALL SERVICE INTERRUPTIONS AND CONNECTIONS WITH THE UTILITY OWNER.
9. ALL UTILITY MATERIALS SHALL BE APPROVED PRIOR TO DELIVERY TO THE PROJECT. SEE 1500-7, " SUBMITTALS AND RECORDS" IN SECTION 1500 OF THE STANDARD SPECIFICATIONS.
10. CONTRACTOR TO COORDINATE UTILITY CONSTRUCTION WORK WITH OTHER DISCIPLINES OF WORK AFFECTING SUBSURFACE CONDITIONS INCLUDING BUT NOT LIMITED TO SIGNING, SIGNALS AND DRAINAGE.

## PROJECT SPECIFIC NOTES:

1. CONTRACTOR'S ATTENTION IS DIRECTED TO THE UTILITY CONSTRUCTION PROJECT SPECIAL PROVISIONS PROVIDED ALONG WITH THIS PLAN SET.
2. PROPOSED WATER LINE FROM -L- LINE STATION 17+47 TO -L- LINE STATION 88+12 INCLUDING ALL BRANCH WATER MAINS SHALL BE D.I. (DUCTILE IRON) PIPE.
3. MECHANICAL JOINT RESTRAINT SHALL BE USED FOR THE SPECIFIED NUMBER OF PIPE JOINTS ON BOTH SIDES OF FITTINGS, VALVES, ETC AS SHOWN IN THE TABLE ON SHEET UC-3E.

4. IN ALL LOCATIONS WHERE A PROPOSED WATER LINE IS TIEING TO AN EXISTING LINE A THRUST COLLAR SHALL BE INSTALLED.
5. ALL WATER LINE FITTINGS SHALL BE DUCTILE IRON, MECHANICAL JOINT OR RESTRAINED JOINT COMPACT FITTINGS.
6. EXISTING APPURTENANCES TO BE REMOVED SHALL NOT BE USED AS NEW MATERIALS IN THE PROPOSED CONSTRUCTION AND ALL APPURTENANCES TO BE REMOVED WILL BE THE PROPERTY OF THE OWNER AND DELIVERED TO THE CITY OF WILSON WATER RESOURCES DEPARTMENT.
7. ALL UTILITY LINES TO BE ABANDONED SHALL BE FILLED WITH FLOWABLE FILL.
8. REMOVAL, HANDLING, AND DISPOSAL OF ASBESTOS CEMENT PIPE SHALL BE PERFORMED IN ACCORDANCE WITH APPLICABLE EPA AND OSHA REGULATIONS AND APPLICABLE FEDERAL, STATE, AND LOCAL REGULATIONS.

9. CONTRACTOR SHALL EMPLOY A PUMP AND HAUL METHOD TO BYPASS SECTIONS OF GRAVITY SEWER MAIN UNDER CONSTRUCTION. CONTRACTOR SHALL PUMP WASTE FROM A MANHOLE UPSTREAM OF THE CONSTRUCTION INTO A TANKER TRUCK AND REINTRODUCE THE WASTE BACK INTO THE SAME SYSTEM AT A MANHOLE DOWNSTREAM OF THE CONSTRUCTION. CONTRACTOR SHALL COORDINATE ALL ASPECTS OF THIS OPERATION WITH THE UTILITY OWNER PRIOR TO BEGINNING ANY SAID WORK. ALL TRANSPORTING OF WASTEWATER SHALL BE IN ACCORDANCE WITH THE RULES AND REGULATIONS OF NCDOT, THE LOCAL MUNICIPALITY, AND OTHER AGENCIES WITH JURISDICTION. CONTRACTOR IS RESPONSIBLE FOR OBTAINING ALL REQUIRED PERMITS ASSOCIATED WITH THE PROPOSED PUMP AND HAUL OPERATIONS.
10. ALL GRAVITY SEWER LINE TO BE D.I. (DUCTILE IRON) PIPE.

ITEM NUMBER	SECTION	DESCRIPTION	QUANTITY	UNIT
2830000000-N	858	ADJUSTMENT OF MANHOLES	20	EA
2845000000-N	858	ADJUSTMENT OF METER BOXES OR VALVE BOXES	19	EA
5325600000-E	1510	6" WATER LINE	1440	LF
5325800000-E	1510	8" WATER LINE	960	LF
5326200000-E	1510	12" WATER LINE	7580	LF
5329000000-E	SP	DUCTILE IRON WATER PIPE FITTINGS	9950	LBS
5540000000-E	1515	6" VALVE	25	EA
5546000000-E	1515	8" VALVE	14	EA
5558000000-E	1515	12" VALVE	31	EA
5648000000-N	1515	RELOCATE WATER METER	15	EA
5649000000-N	1515	RECONNECT WATER METER	45	EA
5666000000-E	1515	FIRE HYDRANT	13	EA
5672000000-N	1515	RELOCATE FIRE HYDRANT	1	EA
5691300000-E	1520	6" SANITARY GRAVITY SEWER	160	LF
5774000000-E	1525	4' DIA UTILITY MANHOLE	2	EA
5798000000-E	1530	ABANDON 2" UTILITY PIPE	1211	LF
5800000000-E	1530	ABANDON 6" UTILITY PIPE	316	LF
5801000000-E	1530	ABANDON 8" UTILITY PIPE	1032	LF
5804000000-E	1530	ABANDON 12" UTILITY PIPE	6963	LF
5815500000-N	1530	REMOVE FIRE HYDRANT	9	EA
5816000000-N	1530	ABANDON UTILITY MANHOLE	1	EA

## UTILITY CONSTRUCTION

# PROJECT TYPICAL DETAILS

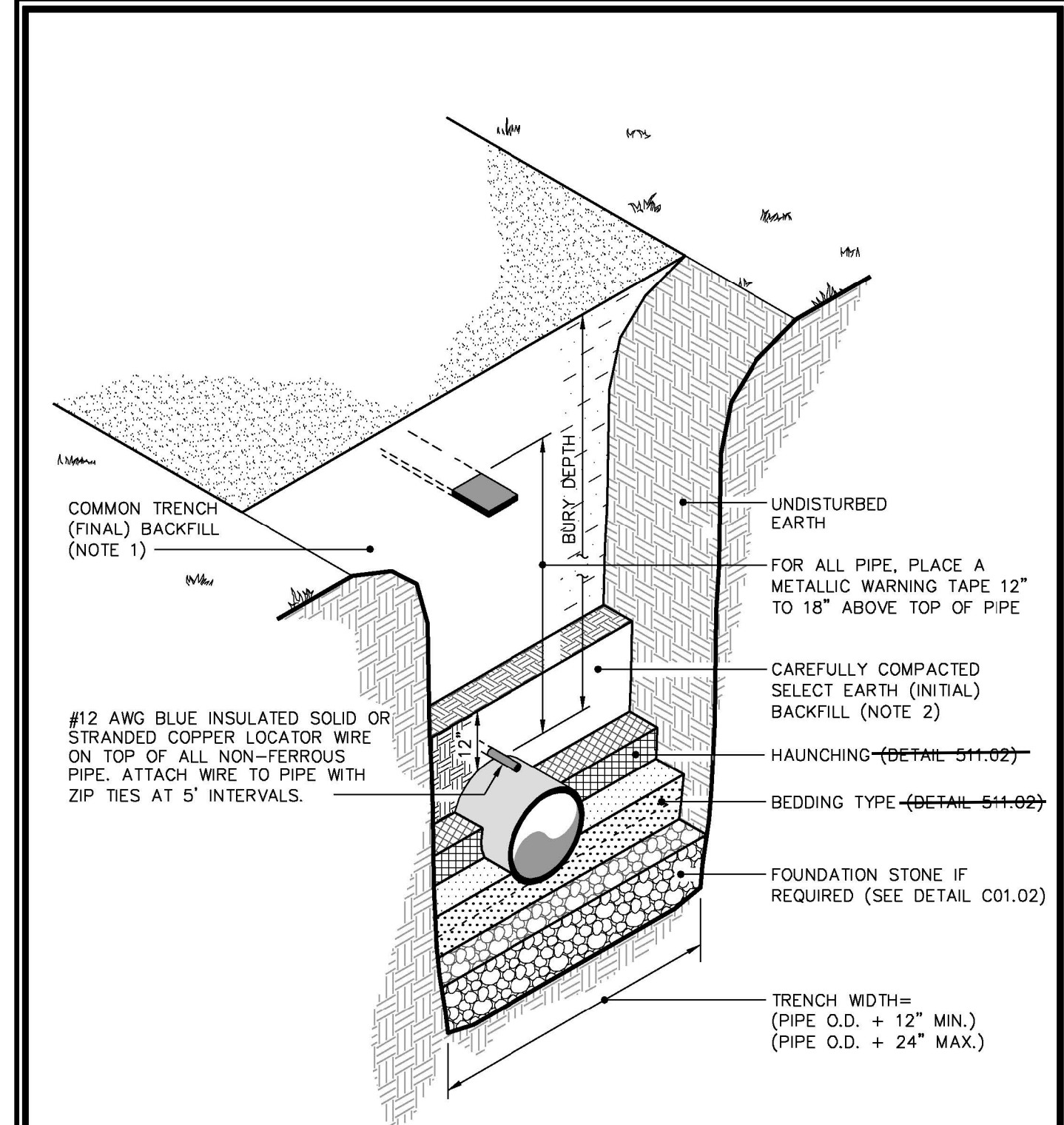
DOCUMENT NOT CONSIDERED FINAL  
UNTIL ALL SIGNATURES ARE COMPLETED

PROJECT REFERENCE NO.	SHEET NO.
U-5935	UC-3A
DESIGNED BY:	
DRAWN BY:	
CHECKED BY:	
APPROVED BY:	
REVISED:	
NORTH CAROLINA DEPARTMENT OF TRANSPORTATION	
UTILITIES ENGINEERING SECTION PHONE: (919) 707-6690 FAX: (919) 250-4151	
8/2/2017 UTILITY CONSTRUCTION PLANS ONLY	

**Michael Baker Engineering, Inc.**  
8000 Regency Pkwy  
Suite 600  
Cary, NC 27518  
INTERNATIONAL NC License: F-1084

## UTILITY CONSTRUCTION

Details Provided by APPIAN Consulting Engineers - www.applanengineers.com 05/06/2010 - 12:21:10 PM



- NOTES:**
- See specifications Section 02275, Part 2 - PRODUCTS for composition of Select Earth Backfill and Common Trench Backfill.
  - See detail C01-03 for pipe laid within an existing paved street.

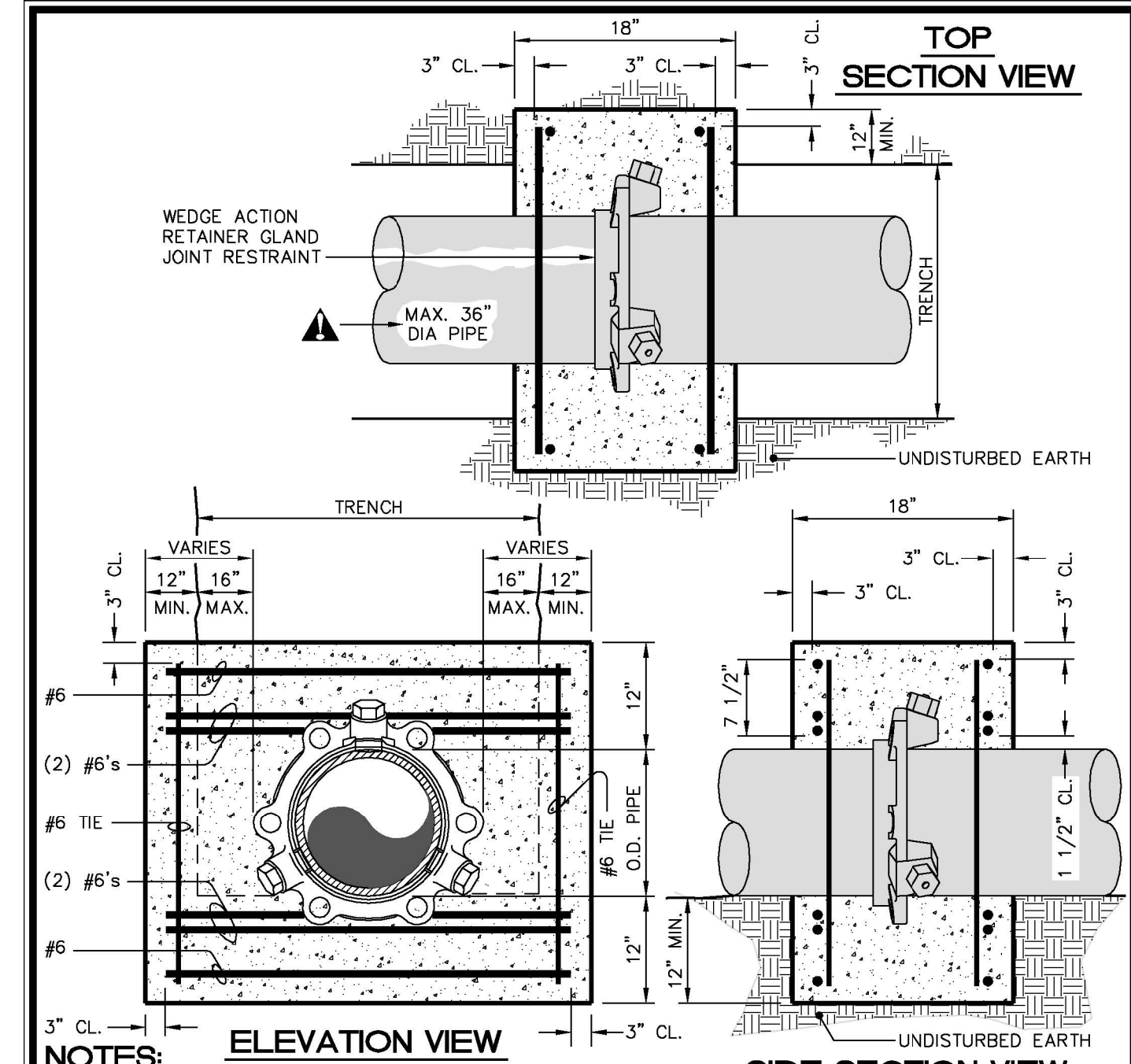
**CITY OF WILSON, N.C.**  
Public Services Departments  
1800 Herring Avenue, / P.O. Box 10  
Wilson, North Carolina 27894  
Voice (252) 399-2465  
FAX (252) 399-2453  
www.wilsonnc.org

USE WITH THE CITY OF WILSON STANDARD SPECIFICATIONS ONLY

SCALE: Not To Scale  
REVISION DATE: June, 2010  
DETAIL # 511.01  
SHEET # 1 of 1

**FORCE MAIN & WATER MAIN PIPE LAYING CONDITIONS**

Details Provided by APPIAN Consulting Engineers - www.applanengineers.com 05/06/2010 - 12:16:39 PM



- NOTES:**
- Concrete shall 3000 P.S.I.
  - Trench bottom width in vicinity of thrust block(s) installation shall be the minimum width for placement of pipe (Max trench width = pipe O.D.+2 Ft.)
  - Place thrust collar on one full joint of pipe.
  - Last joint of pipe with thrust collar to be mechanical joint pipe with joint restraint system (grip ring).
  - Place thrust collar 2± feet from plug end of pipe.
  - Thrust collars may be used only when approved by City Engineer or Water Resources. Otherwise, designer shall design & specify on the plans length of pipe required to be restrained on each leg. See standard detail 512-06 and design manual.

**CITY OF WILSON, N.C.**  
Public Services Departments  
1800 Herring Avenue, / P.O. Box 10  
Wilson, North Carolina 27894  
Voice (252) 399-2465  
FAX (252) 399-2453  
www.wilsonnc.org

USE WITH THE CITY OF WILSON STANDARD SPECIFICATIONS ONLY

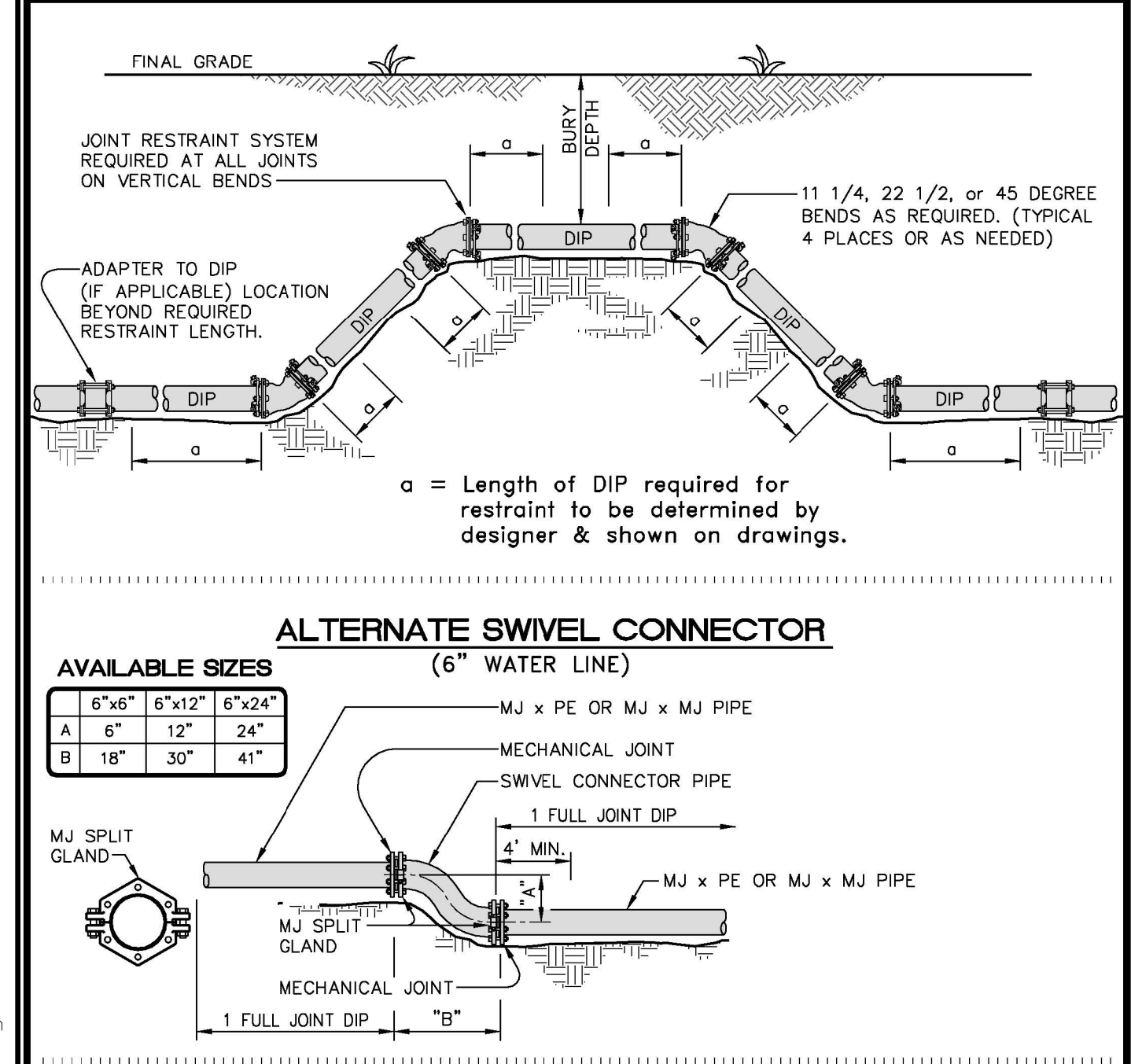
SCALE: Not To Scale  
REVISION DATE: June, 2010  
DETAIL # 512.05  
SHEET # 1 of 1

**CONCRETE THRUST COLLAR DETAIL**

**MAXIMUM TRENCH WIDTH AT TOP OF PIPE**

NOMIAL PIPE SIZE (INCHES)	TRENCH WIDTH (INCHES)	NOMIAL PIPE SIZE (INCHES)	TRENCH WIDTH (INCHES)
2	26	18	42
4	28	20	44
6	30	24	48
8	32	30	54
10	34	36	60
12	36	42	66
14	38	48	72
16	40	54	78

Details Provided by APPIAN Consulting Engineers - www.applanengineers.com 05/06/2010 - 12:32:05 PM



- NOTES:**
- The offset is to be assembled above ground first.
  - Record all as-built lengths using the center lines of the pipes or bends as reference points.
  - Adapters vary in type according to the material of the existing water main.
  - Compact ductile iron (350 p.s.i.) fire hydrant offset connector pipe (AWWA C-110-ANSI A21.4) equal to or exceeding "GRADE LOK" as manufactured by: Assured Flow Sales, Inc., 1-(800)-388-0678
  - All mechanical joint fittings or valves shall have a joint restraint system.

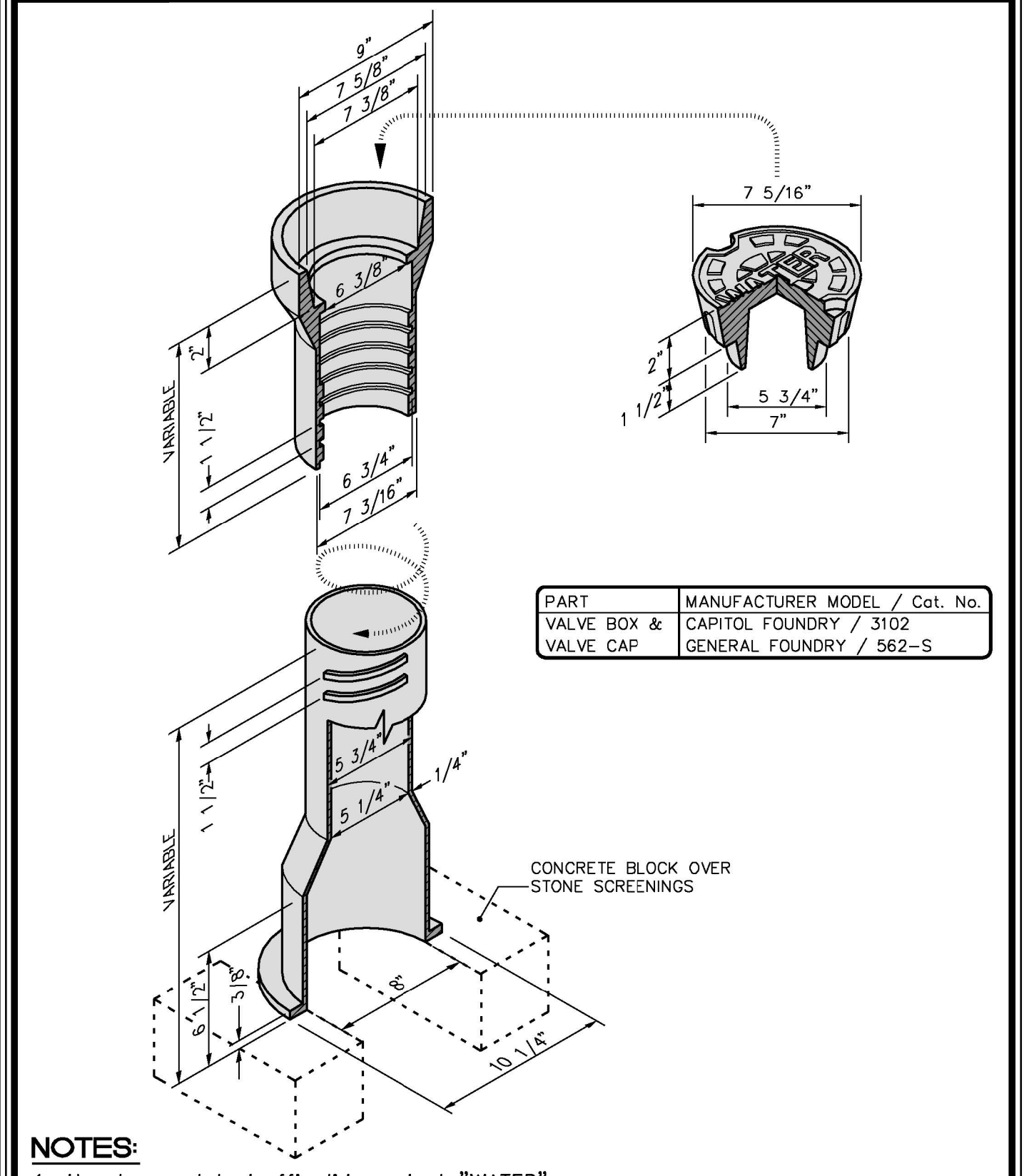
**CITY OF WILSON, N.C.**  
Public Services Departments  
1800 Herring Avenue, / P.O. Box 10  
Wilson, North Carolina 27894  
Voice (252) 399-2465  
FAX (252) 399-2453  
www.wilsonnc.org

USE WITH THE CITY OF WILSON STANDARD SPECIFICATIONS ONLY

SCALE: Not To Scale  
REVISION DATE: June, 2010  
DETAIL # 513.01  
SHEET # 1 of 1

**VERTICAL OFFSET DETAIL**

Details Provided by APPIAN Consulting Engineers - www.applanengineers.com 05/06/2010 - 12:30:05 PM



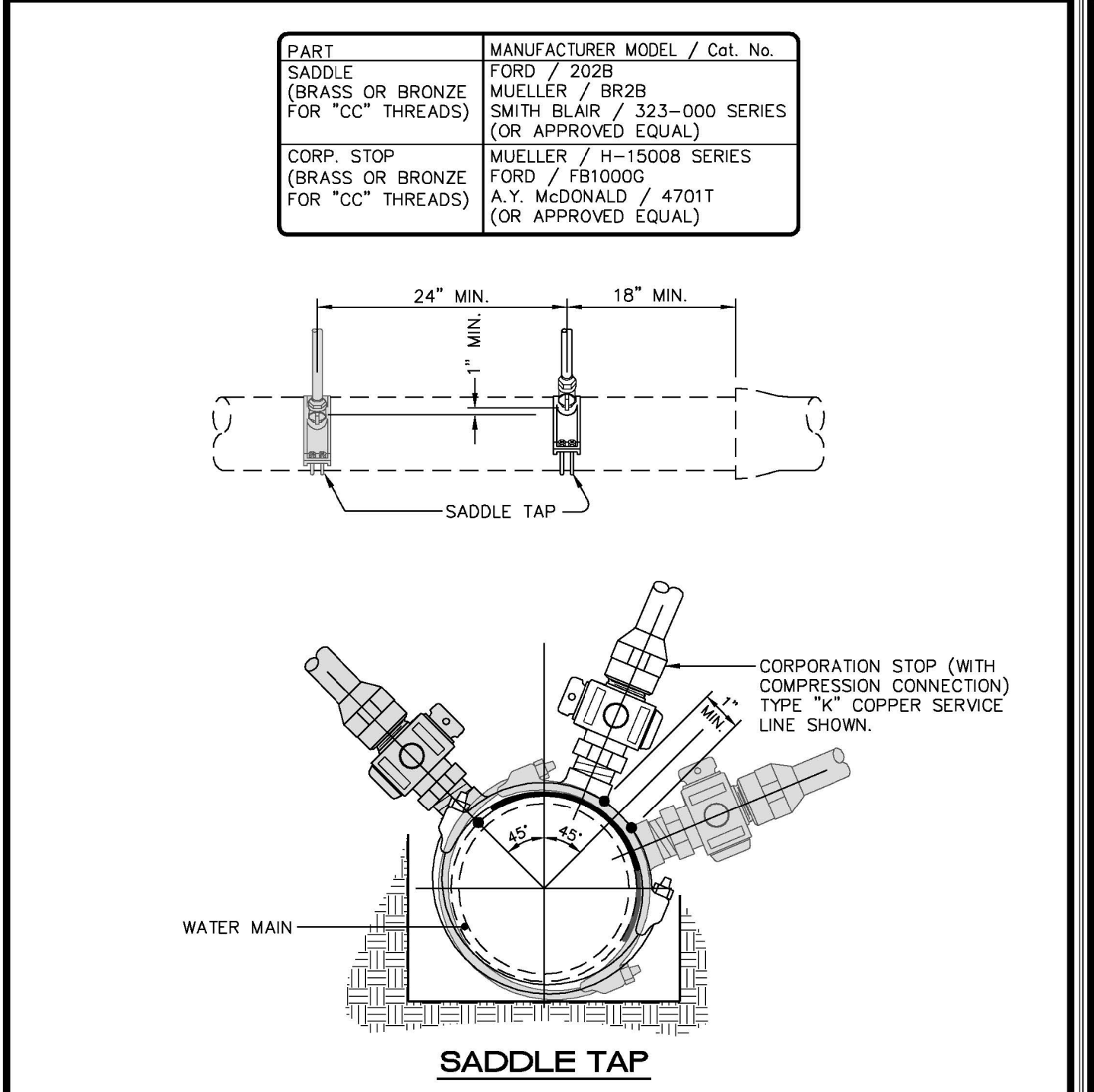
**CITY OF WILSON, N.C.**  
Public Services Departments  
1800 Herring Avenue, / P.O. Box 10  
Wilson, North Carolina 27894  
Voice (252) 399-2465  
FAX (252) 399-2453  
www.wilsonnc.org

USE WITH THE CITY OF WILSON STANDARD SPECIFICATIONS ONLY

SCALE: Not To Scale  
REVISION DATE: June, 2010  
DETAIL # 513.01  
SHEET # 1 of 1

**STANDARD SCREW VALVE BOX DETAIL**

Details Provided by APPIAN Consulting Engineers - www.applanengineers.com 05/06/2010 - 12:27:35 PM



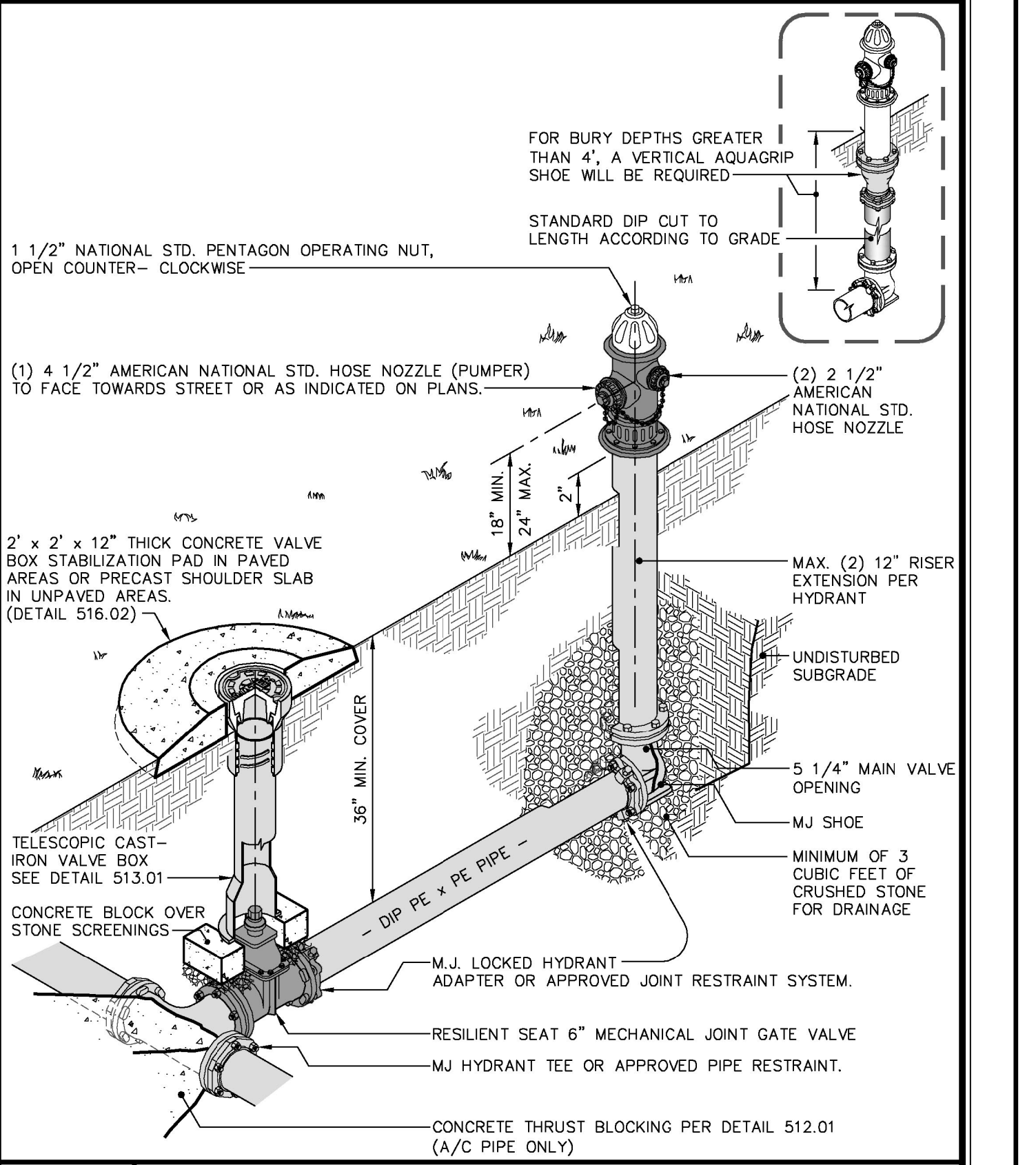
**CITY OF WILSON, N.C.**  
Public Services Departments  
1800 Herring Avenue, / P.O. Box 10  
Wilson, North Carolina 27894  
Voice (252) 399-2465  
FAX (252) 399-2453  
www.wilsonnc.org

USE WITH THE CITY OF WILSON STANDARD SPECIFICATIONS ONLY

SCALE: Not To Scale  
REVISION DATE: June, 2010  
DETAIL # 513.04  
SHEET # 1 of 1

**STANDARD WATER TAP DETAIL (1", 1 1/2", & 2" TAPS)**

Details Provided by APPIAN Consulting Engineers - www.applanengineers.com 03/08/2016 - 5:37:06 PM



**CITY OF WILSON, N.C.**  
Public Services Departments  
1800 Herring Avenue, / P.O. Box 10  
Wilson, North Carolina 27894  
Voice (252) 399-2465  
FAX (252) 399-2453  
www.wilsonnc.org

USE WITH THE CITY OF WILSON STANDARD SPECIFICATIONS ONLY

SCALE: Not To Scale  
REVISION DATE: March, 2016  
DETAIL # 514.02  
SHEET # 1 of 1

**STANDARD HYDRANT SETTING (NON-PAVED AREAS)**

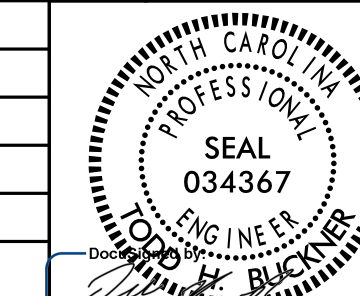
5/14/99  
02-AUG-2017 13:21:49 UC-SHT\_02.dgn

# PROJECT TYPICAL DETAILS

DOCUMENT NOT CONSIDERED FINAL  
UNTIL ALL SIGNATURES ARE COMPLETED

PROJECT REFERENCE NO. U-5935 SHEET NO. UC-3B

DESIGNED BY:  
DRAWN BY:  
CHECKED BY:  
APPROVED BY:  
REVISED:  
NORTH CAROLINA  
DEPARTMENT OF  
TRANSPORTATION  
UTILITIES ENGINEERING SEC.  
PHONE: (919) 707-6690  
FAX: (919) 250-4151  
UTILITY CONSTRUCTION  
PLANS ONLY



**Michael Baker Engineering, Inc.**  
8000 Regency Pkwy  
Suite 600  
Cary, NC 27518  
INTERNATIONAL NC License: F-1084

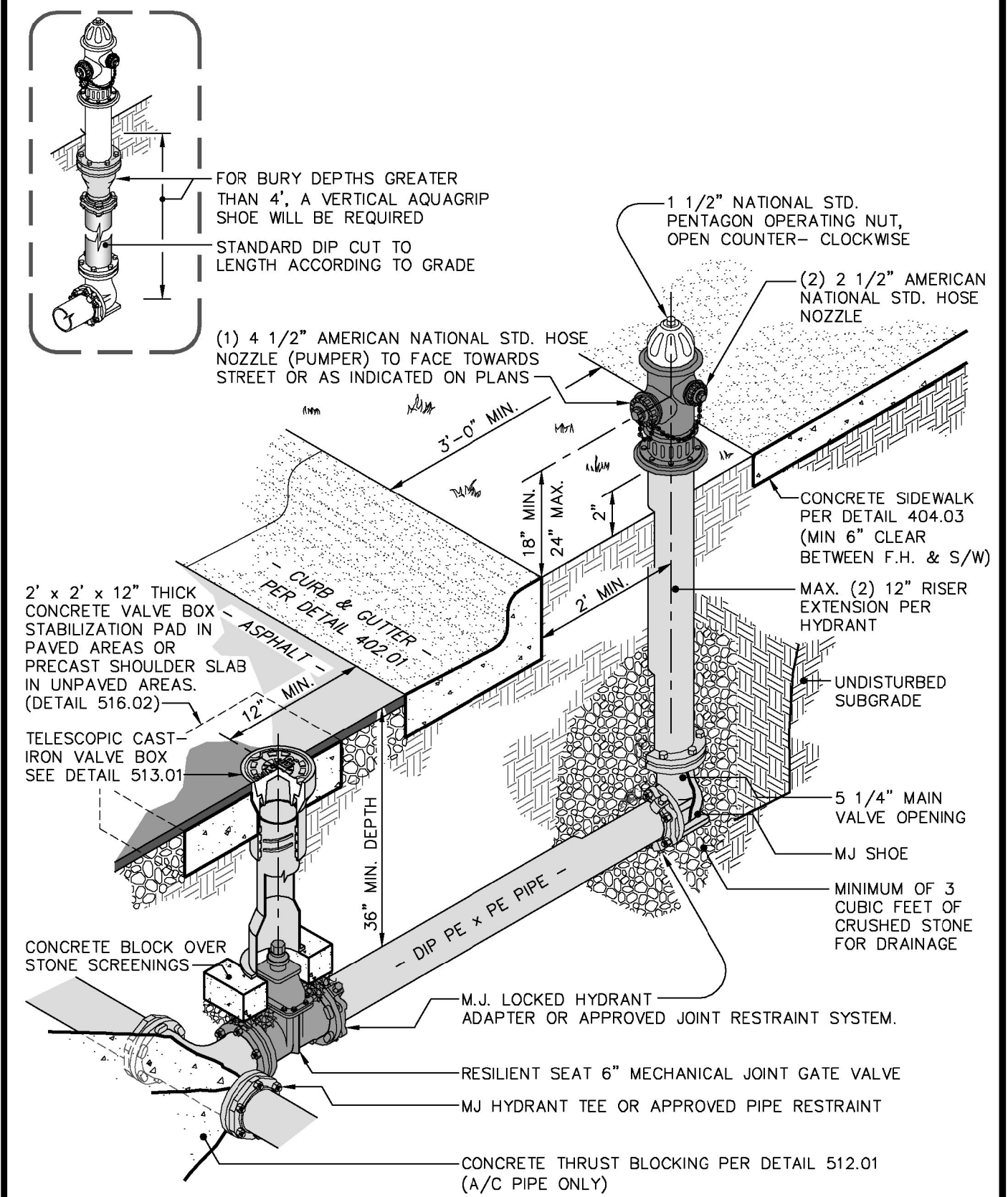
03/08/2016 - 5:36:52 PM

03/08/2016 - 5:36:52 PM

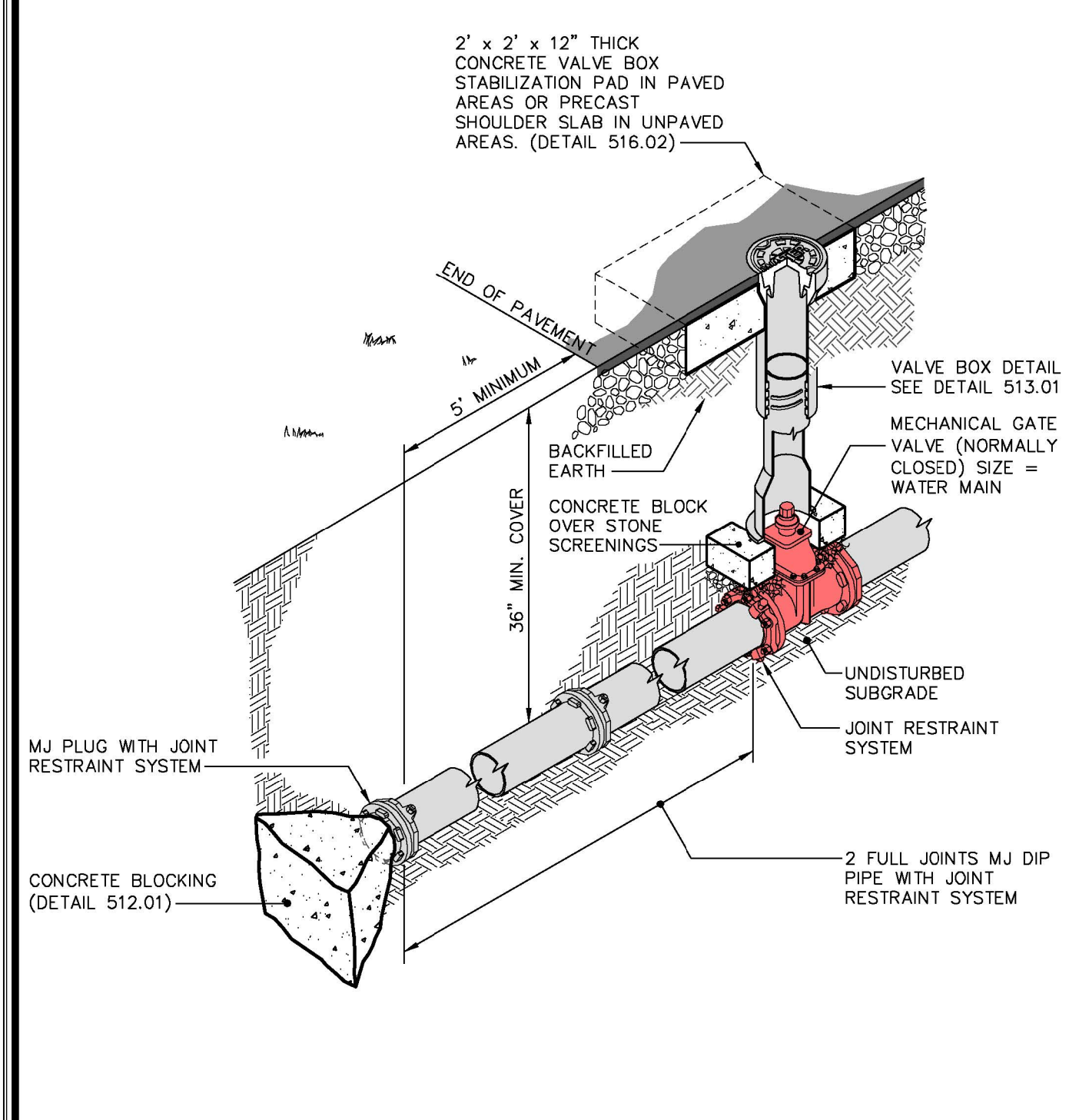
05/06/2010 - 12:42:35 PM

03/08/2016 - 5:36:29 PM

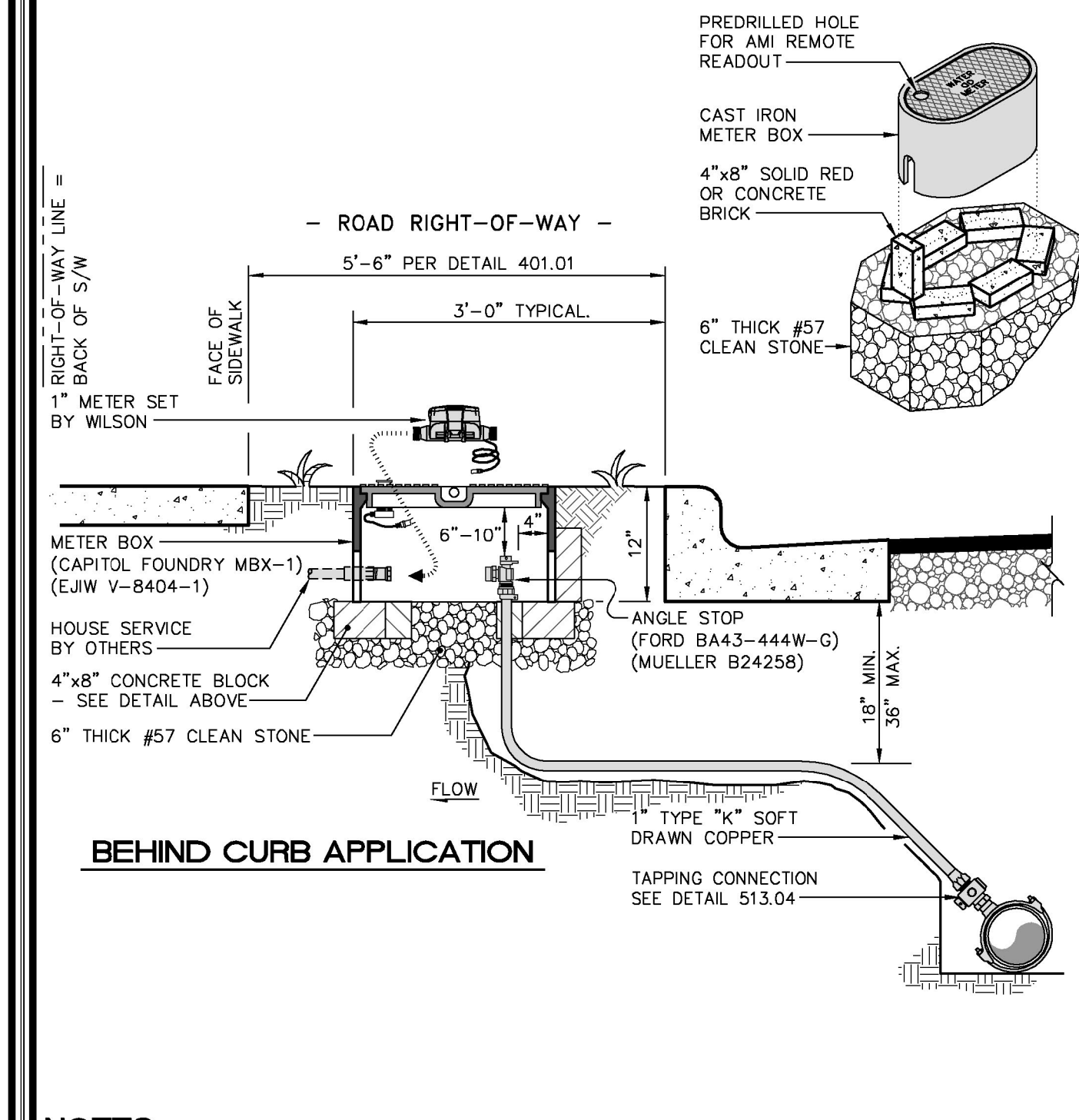
03/08/2016 - 5:36:29 PM



**CITY of WILSON, N.C.**  
Public Services Departments  
1800 Herring Avenue, / P.O. Box 10  
Wilson, North Carolina 27894  
Voice (252) 399-2465  
FAX (252) 399-2453  
www.wilsonnc.org  
USE WITH THE CITY OF WILSON STANDARD SPECIFICATIONS ONLY  
SCALE: Not To Scale  
DETAIL # 514.03  
REVISION DATE: March, 2016  
SHEET # 3 of 3



**CITY of WILSON, N.C.**  
Public Services Departments  
1800 Herring Avenue, / P.O. Box 10  
Wilson, North Carolina 27894  
Voice (252) 399-2465  
FAX (252) 399-2453  
www.wilsonnc.org  
USE WITH THE CITY OF WILSON STANDARD SPECIFICATIONS ONLY  
SCALE: Not To Scale  
DETAIL # 514.04  
REVISION DATE: March, 2016  
SHEET # 1 of 1



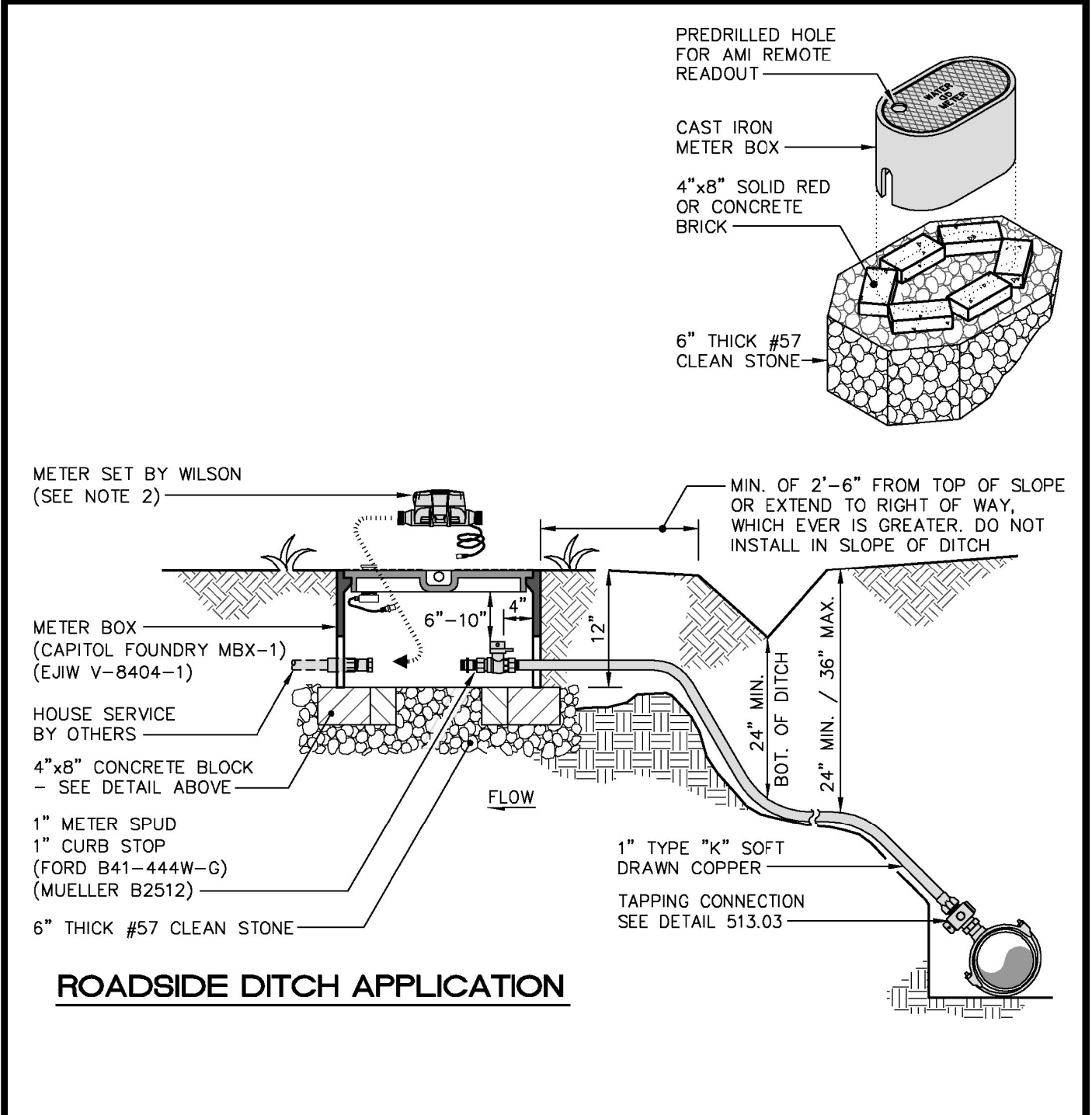
**CITY of WILSON, N.C.**  
Public Services Departments  
1800 Herring Avenue, / P.O. Box 10  
Wilson, North Carolina 27894  
Voice (252) 399-2465  
FAX (252) 399-2453  
www.wilsonnc.org  
USE WITH THE CITY OF WILSON STANDARD SPECIFICATIONS ONLY  
SCALE: Not To Scale  
DETAIL # 515.01  
REVISION DATE: March, 2016  
SHEET # 1 of 2

03/08/2016 - 5:37:23 PM

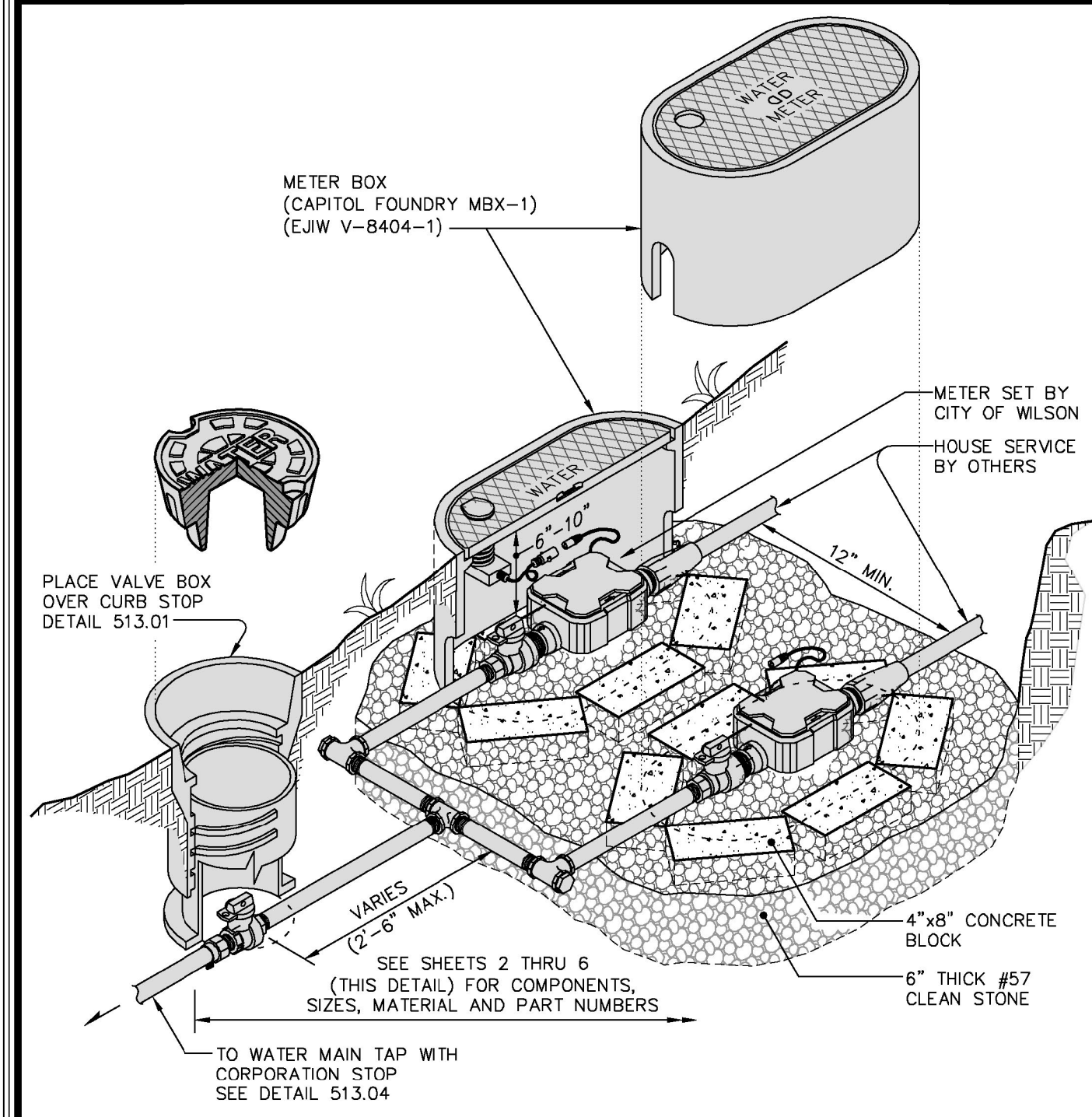
03/08/2016 - 5:39:47 PM

03/08/2016 - 5:39:33 PM

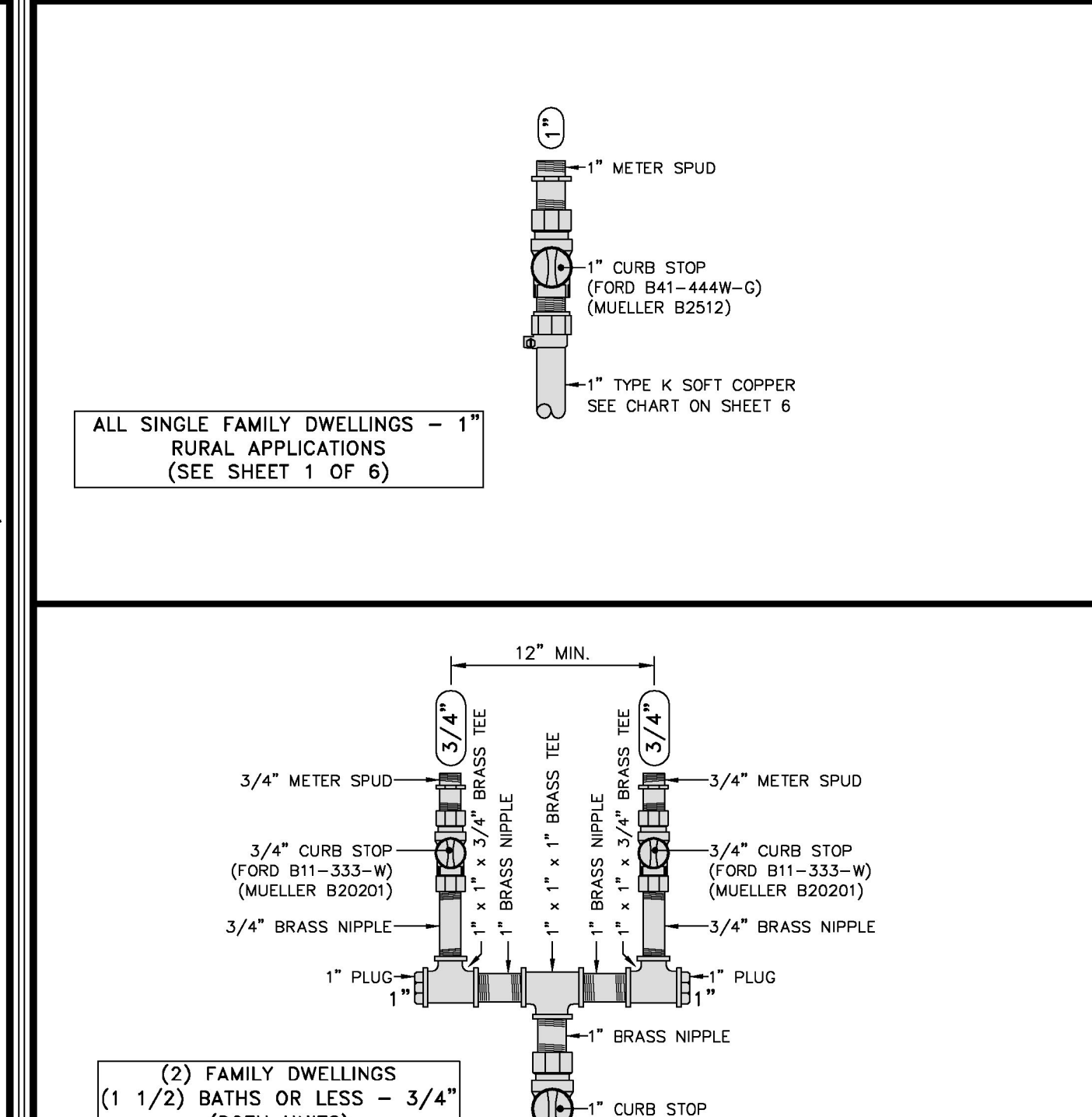
03/08/2016 - 5:39:20 PM



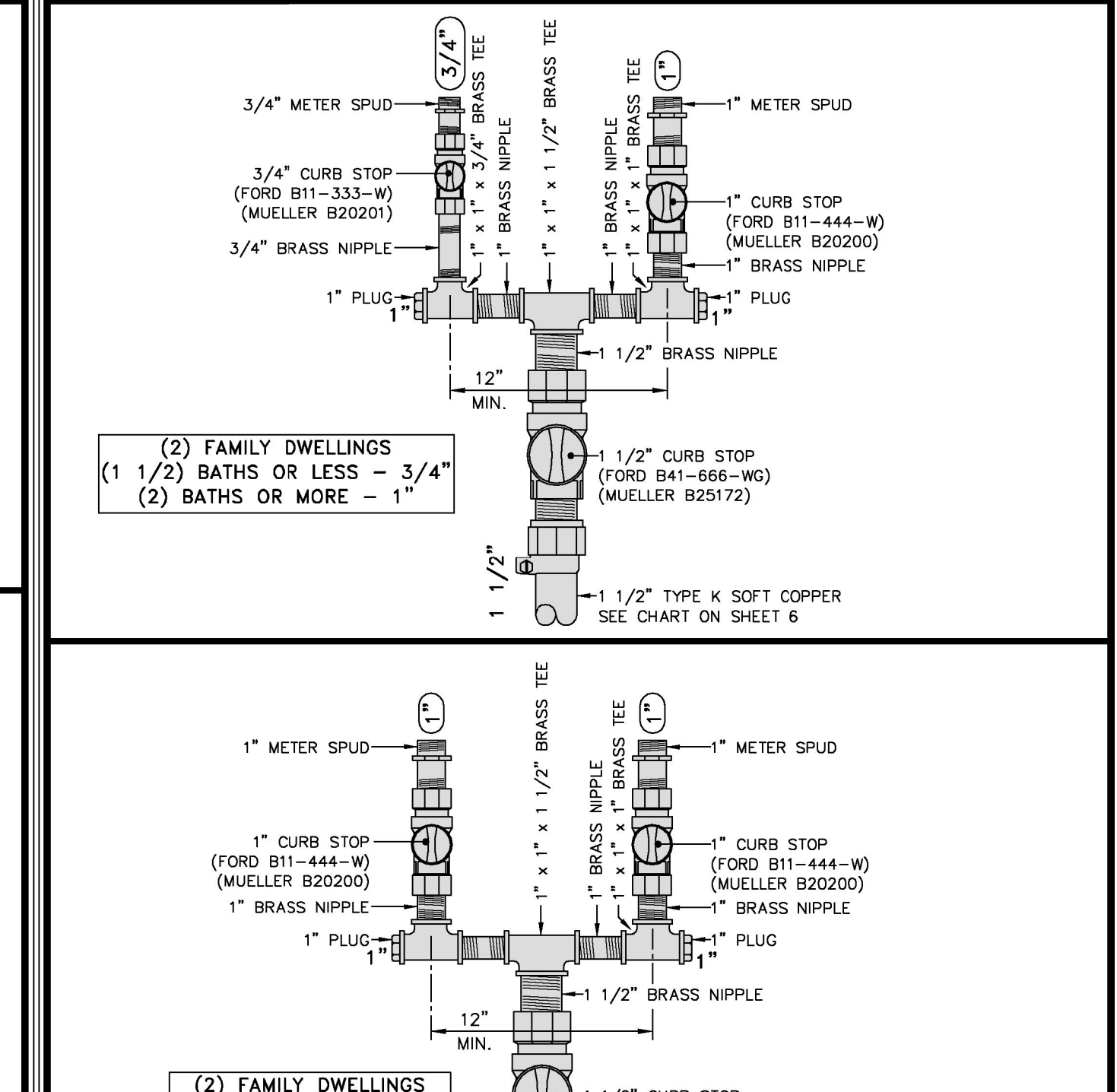
**CITY of WILSON, N.C.**  
Public Services Departments  
1800 Herring Avenue, / P.O. Box 10  
Wilson, North Carolina 27894  
Voice (252) 399-2465  
FAX (252) 399-2453  
www.wilsonnc.org  
USE WITH THE CITY OF WILSON STANDARD SPECIFICATIONS ONLY  
SCALE: Not To Scale  
DETAIL # 515.01  
REVISION DATE: March, 2016  
SHEET # 2 of 2



**CITY of WILSON, N.C.**  
Public Services Departments  
1800 Herring Avenue, / P.O. Box 10  
Wilson, North Carolina 27894  
Voice (252) 399-2465  
FAX (252) 399-2453  
www.wilsonnc.org  
USE WITH THE CITY OF WILSON STANDARD SPECIFICATIONS ONLY  
SCALE: Not To Scale  
DETAIL # 515.02  
REVISION DATE: March, 2016  
SHEET # 1 of 6



**CITY of WILSON, N.C.**  
Public Services Departments  
1800 Herring Avenue, / P.O. Box 10  
Wilson, North Carolina 27894  
Voice (252) 399-2465  
FAX (252) 399-2453  
www.wilsonnc.org  
USE WITH THE CITY OF WILSON STANDARD SPECIFICATIONS ONLY  
SCALE: Not To Scale  
DETAIL # 515.02  
REVISION DATE: March, 2016  
SHEET # 2 of 6



**CITY of WILSON, N.C.**  
Public Services Departments  
1800 Herring Avenue, / P.O. Box 10  
Wilson, North Carolina 27894  
Voice (252) 399-2465  
FAX (252) 399-2453  
www.wilsonnc.org  
USE WITH THE CITY OF WILSON STANDARD SPECIFICATIONS ONLY  
SCALE: Not To Scale  
DETAIL # 515.02  
REVISION DATE: March, 2016  
SHEET # 3 of 6

02-AUG-2017 13:21:59 UC-SHT\_02.dgn