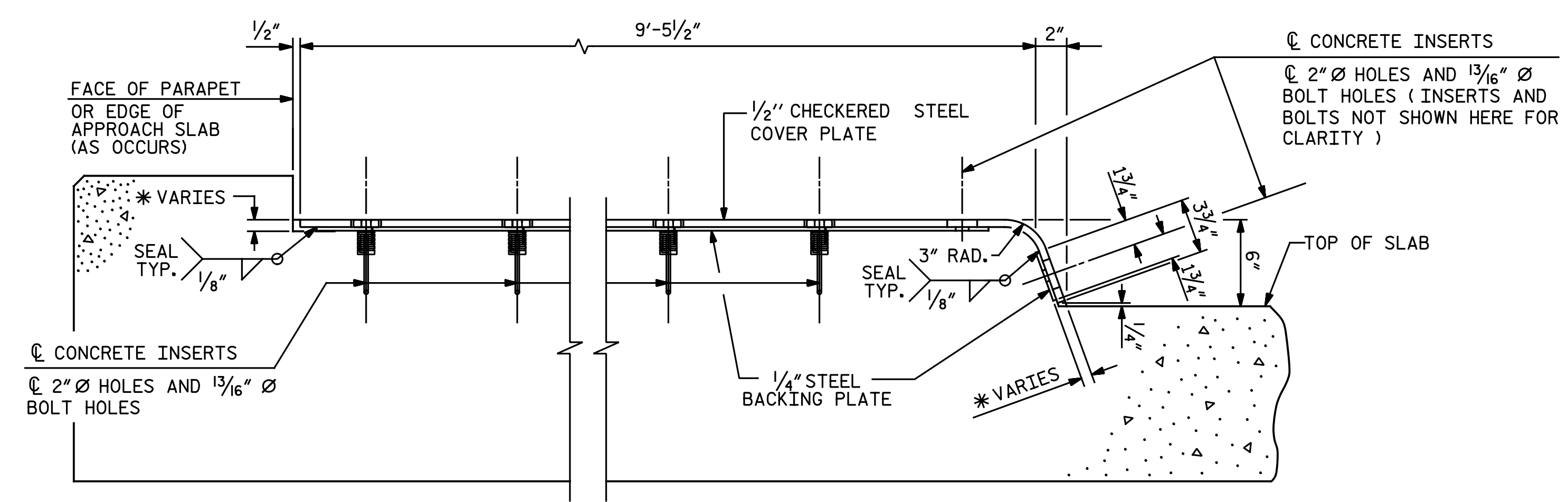


NOTES

THE STEEL PLATES SHALL CONFORM TO AASHTO M270 GRADE 36 OR APPROVED EQUAL. AFTER FABRICATION, THE PLATES SHALL BE COMMERCIALY BLAST CLEANED AND EITHER COATED WITH A MINIMUM THICKNESS OF 4 MILS (DRY) OF ZINC-RICH PAINT, GALVANIZED OR METALLIZED TO A MINIMUM THICKNESS OF 6 MILS IN ACCORDANCE WITH THE STANDARD SPECIFICATIONS. FOR THERMAL SPRAYED COATINGS (METALLIZATION), SEE SPECIAL PROVISIONS.

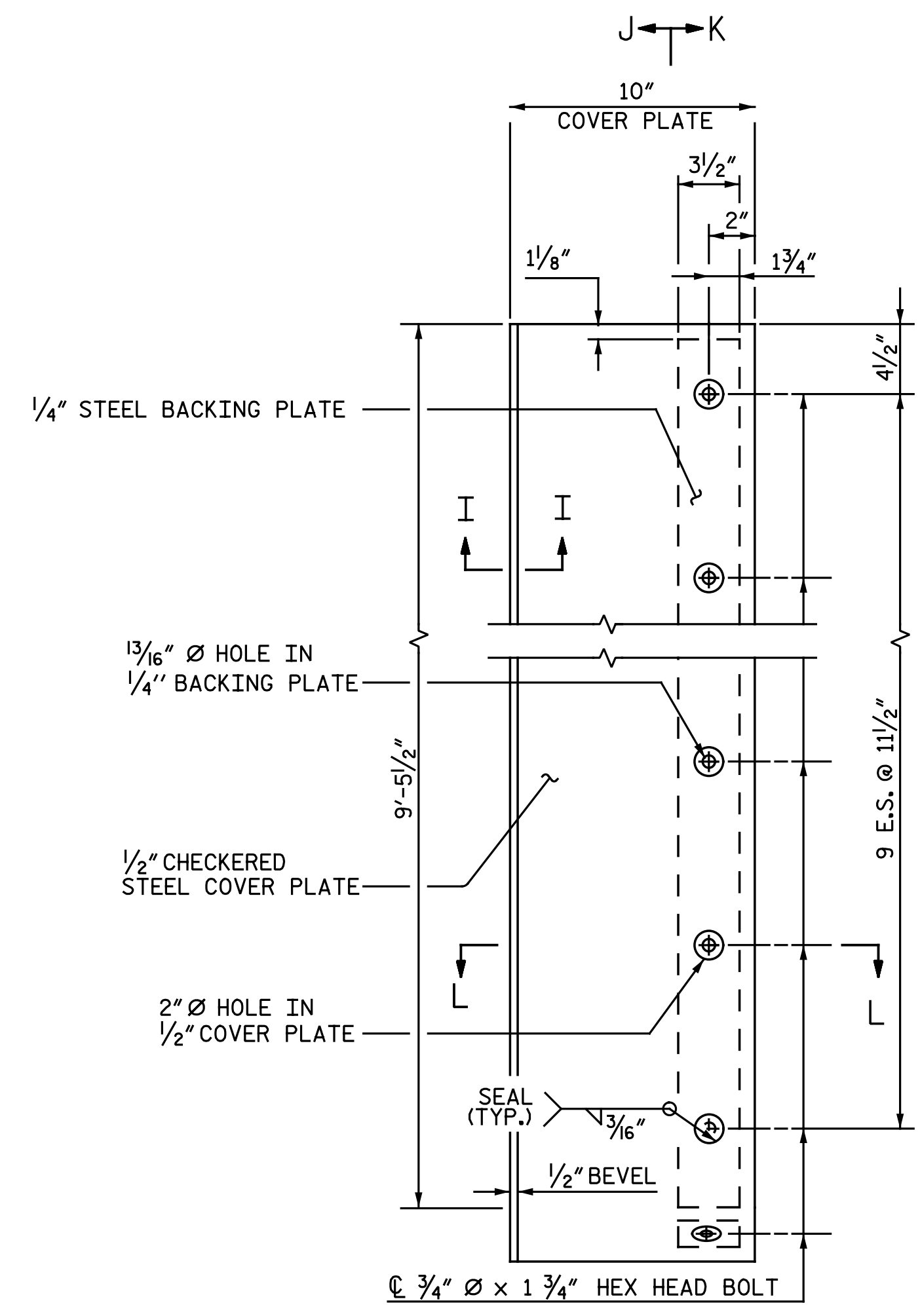
THE 3/4" DIAMETER HEX HEAD BOLTS SHALL CONFORM TO ASTM F593 ALLOY 304 STAINLESS STEEL.

NO SEPARATE PAYMENT WILL BE MADE FOR FURNISHING AND INSTALLING THE COVER PLATE. THE ENTIRE COST OF THIS WORK SHALL BE INCLUDED IN THE LUMP SUM PRICE FOR "FOAM JOINT SEALS".

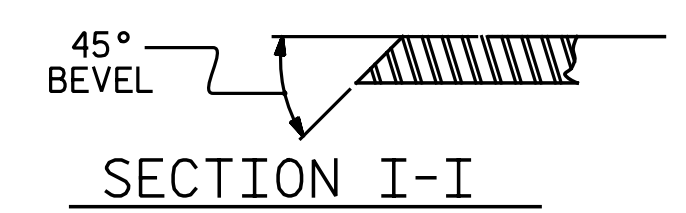


END VIEW
(NORMAL TO SIDEWALK)

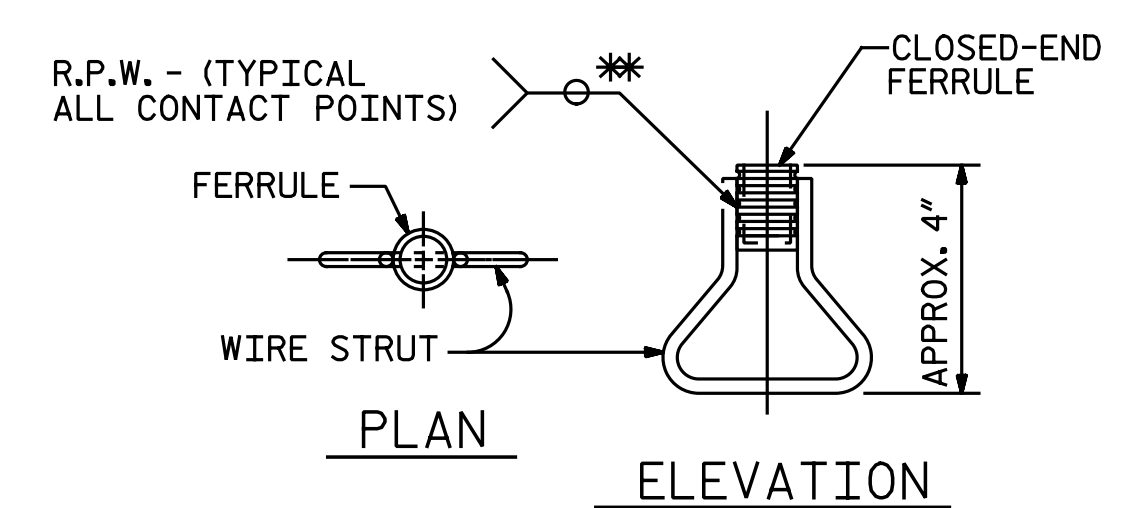
* CONCRETE RECESS DIMENSIONS:
 13/16" FOR THE SIDE OF THE JOINT HAVING THE 1/2" COVER PLATE WITH A 1/4" BACKING PLATE.
 9/16" FOR THE SIDE OF THE JOINT HAVING ONLY THE 1/2" COVER PLATE.



COVER PLATE DETAILS

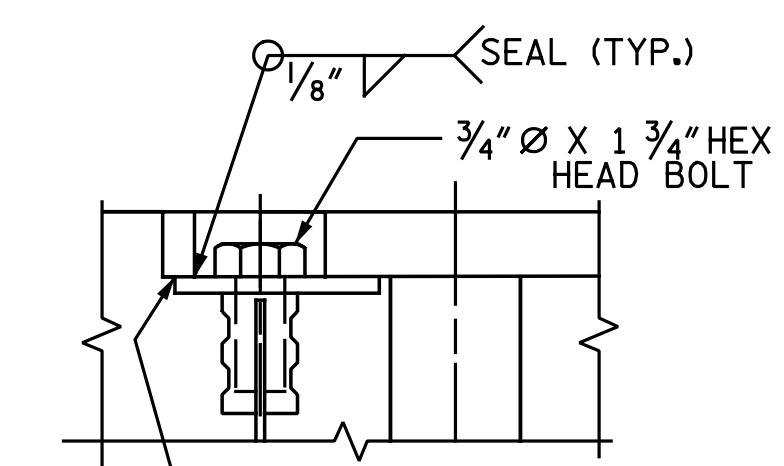


SECTION I-I

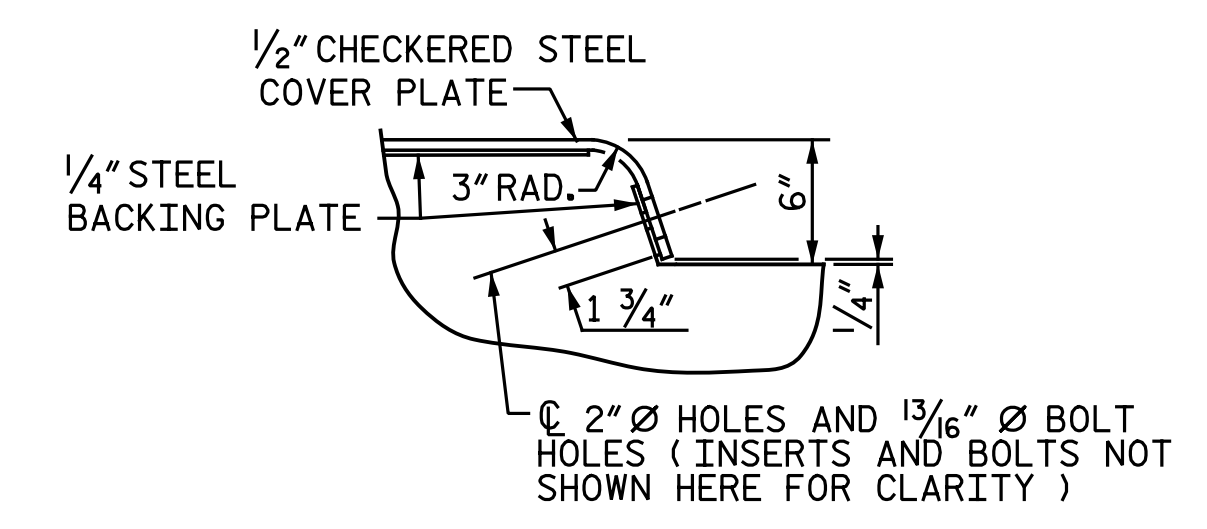


CONCRETE INSERT

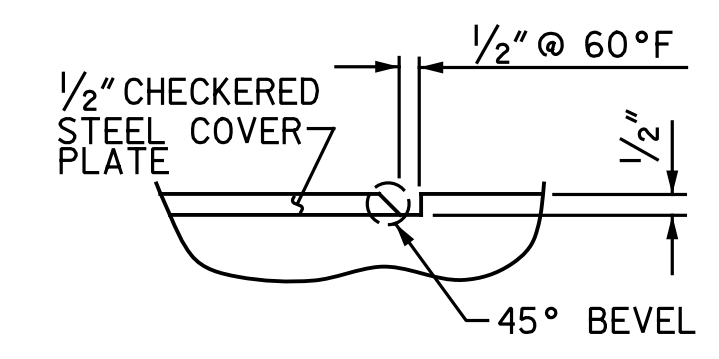
* EACH WELDED ATTACHMENT OF WIRE TO FERRULE SHALL DEVELOP THE TENSILE STRENGTH OF THE WIRE.



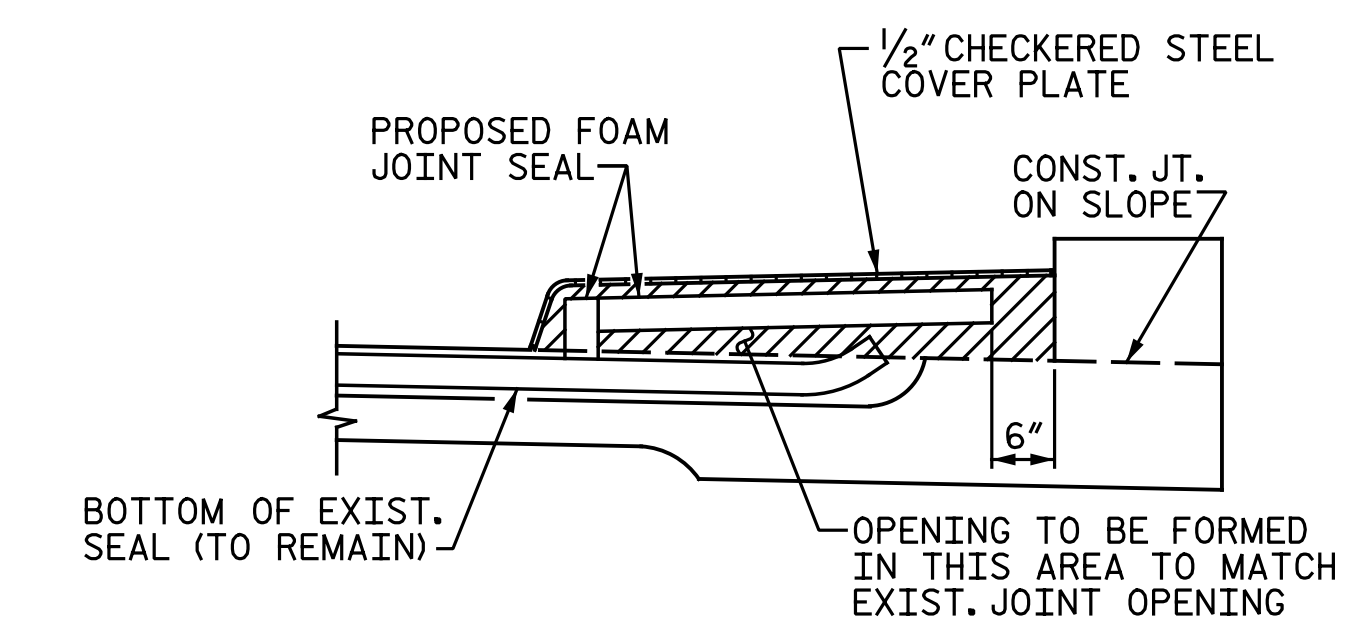
DETAIL "A"



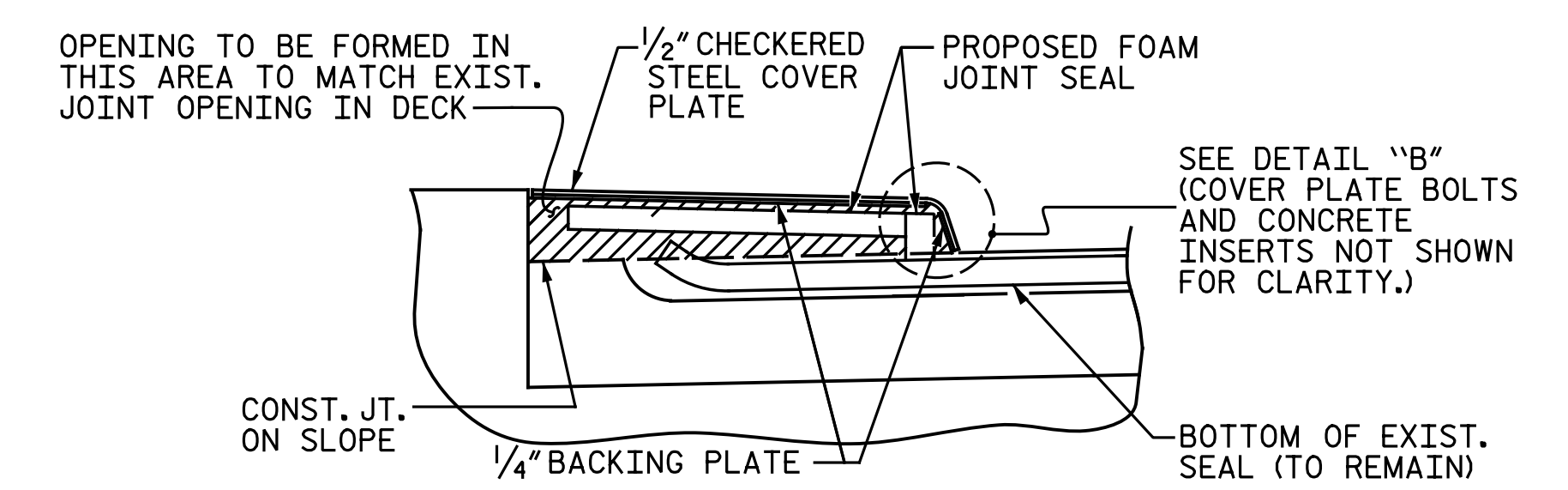
DETAIL "B"



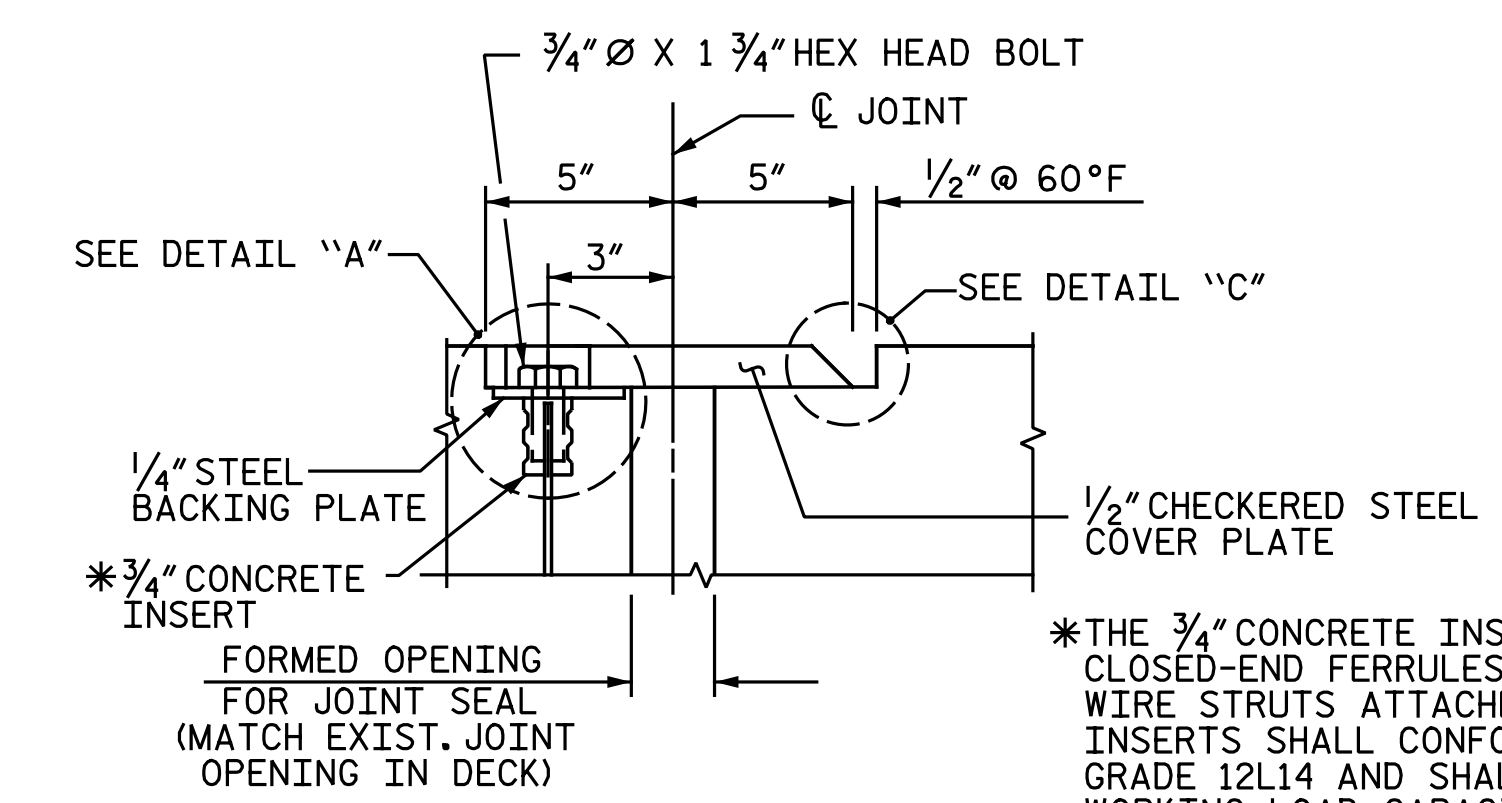
DETAIL "C"



SECTION J-J



SECTION K-K



SECTION L-L

JOINT SEAL DETAILS

PROJECT NO. U-5935
WILSON COUNTY
 STATION: 39+00.08 -EY20-

SHEET 5 OF 5



STATE OF NORTH CAROLINA
 DEPARTMENT OF TRANSPORTATION
 RALEIGH
**SUPERSTRUCTURE
 MODIFICATIONS
 FOAM JOINT
 SEAL DETAILS
 FOR SIDEWALK**

DOCUMENT NOT CONSIDERED FINAL
 UNLESS ALL SIGNATURES COMPLETED

Michael Baker INTERNATIONAL		Michael Baker Engineering 8000 Regency Parkway, Suite 600 Cary, North Carolina 27518 NC License No.: F-1084		REVISIONS		SHEET NO.
NO.	BY:	DATE:	NO.	BY:	DATE:	SI-5
1			3			TOTAL SHEETS
2			4			5

DRAWN BY : N. B. SPEAKS DATE : 5-18-17
 CHECKED BY : D. A. COLETTI DATE : 5-18-17