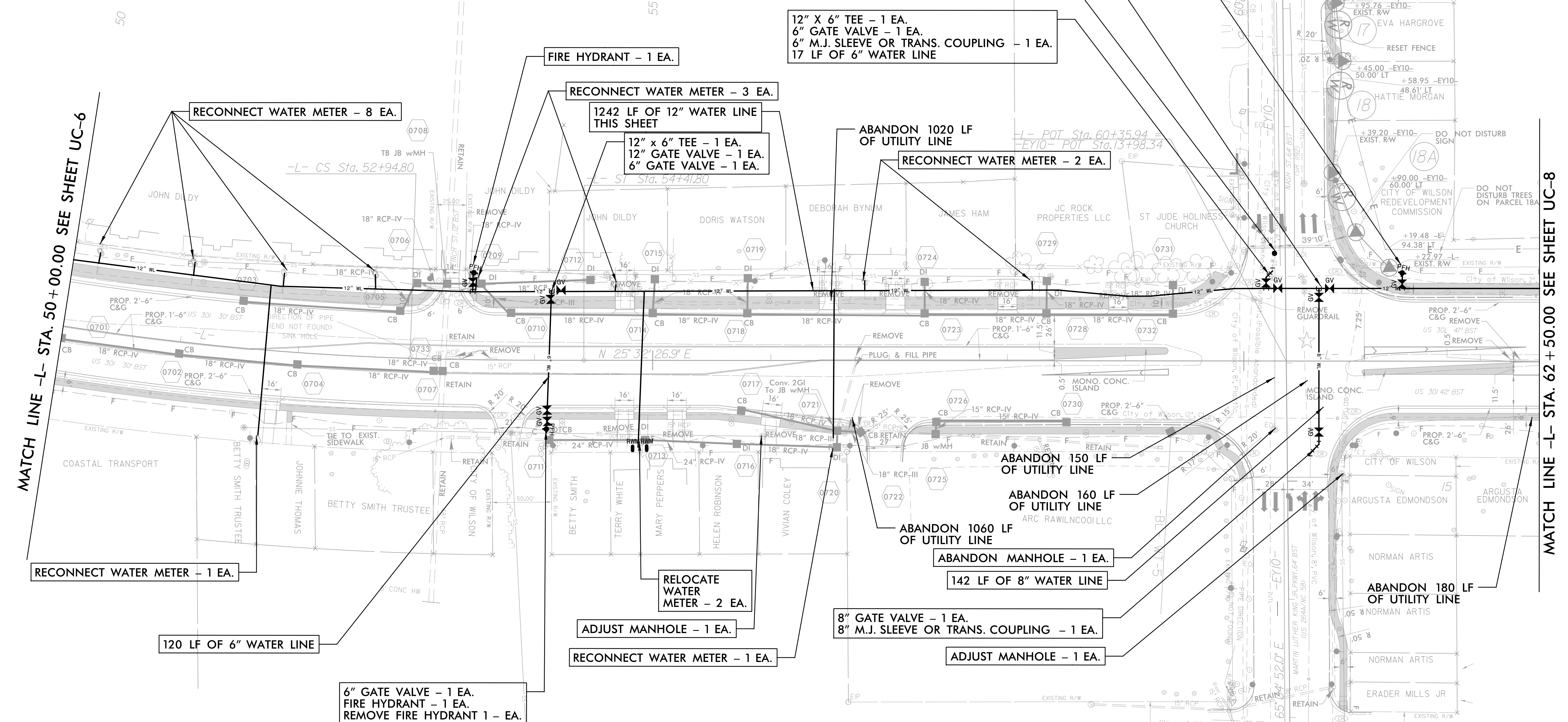
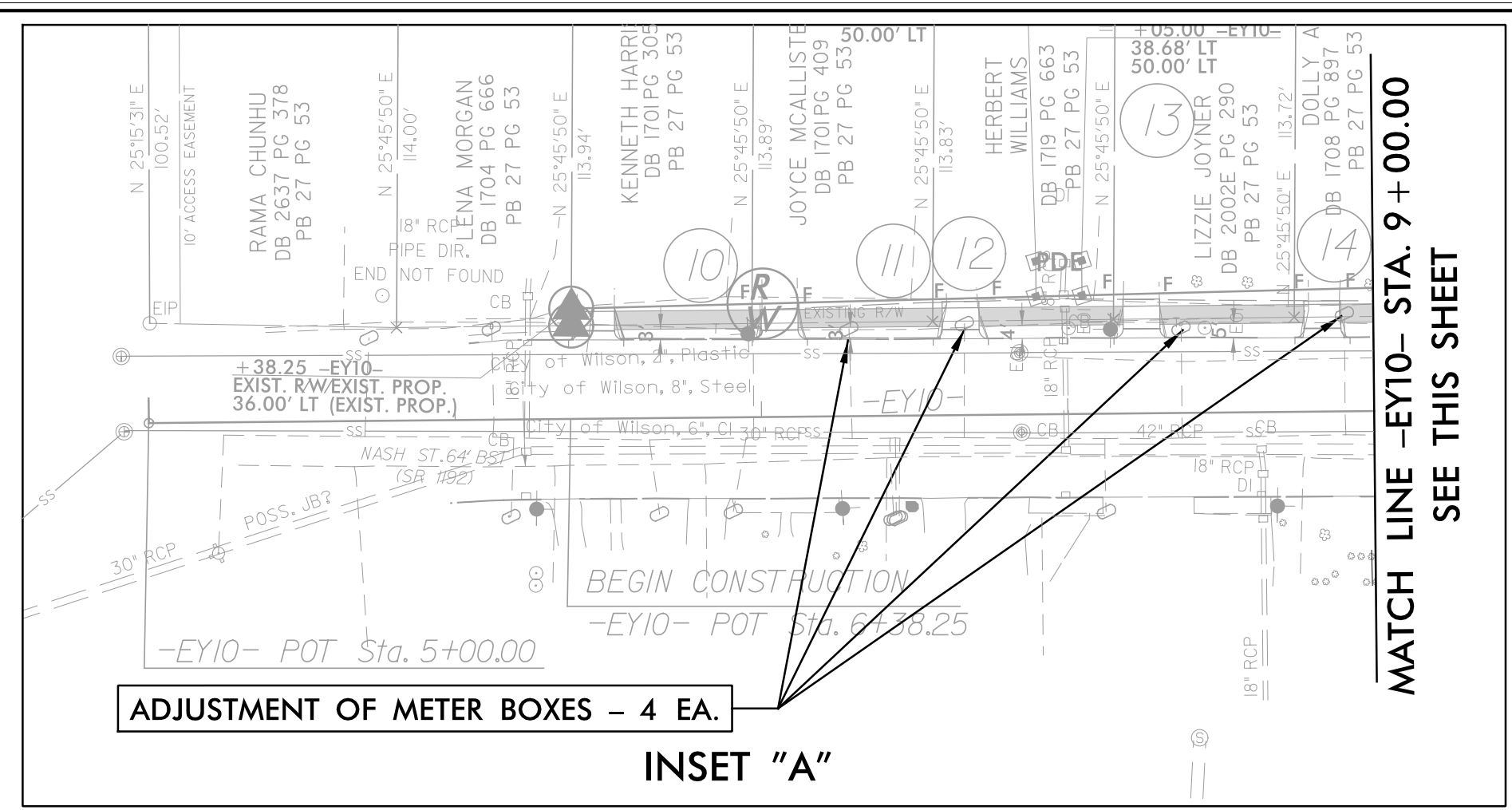


DOCUMENT NOT CONSIDERED FINAL
 UNTIL ALL SIGNATURES ARE COMPLETED

MATCH LINE -EY10- STA. 9 + 00.00
 SEE INSET "A" THIS SHEET



MATCH LINE -L- STA. 50 + 00.00 SEE SHEET UC-6

MATCH LINE -L- STA. 62 + 50.00 SEE SHEET UC-8

-L-

Pls Sta 35+66.66	Pl Sta 44+91.24	Pls Sta 53+43.81
Os = 1' 45" 16.9"	Δ = 40' 05" 11.7" (LT)	Os = 1' 45" 16.9"
Ls = 147.00'	D = 2' 23" 14.4"	Ls = 147.00'
LT = 98.00'	L = 1,679.14'	LT = 98.00'
ST = 49.00'	T = 875.58'	ST = 49.00'
	R = 2,400.00'	
	Ds = 50 MPH	
	SE = 0.04	
	RUNOFF = 147.00'	

THE ESTIMATED QUANTITY OF DUCTILE IRON WATER PIPE FITTINGS ON THIS PLAN SHEET IS 408 POUNDS. THE ACTUAL QUANTITY AND TYPE OF FITTINGS WILL VARY BASED ON THE ACTUAL FIELD CONDITIONS.

THE ESTIMATED QUANTITY OF RESTRAINED JOINT WATER PIPE FOR THIS PLAN SHEET IS:
 6" - 140 LF
 8" - 142 LF
 12" - 508 LF
 THE ACTUAL QUANTITY WILL VARY BASED ON FIELD CONDITIONS. SEE SHEET UC-3E FOR LENGTHS FOR FITTINGS.

ADJUSTMENT OF METER BOX - 1 EA.
 ADJUSTMENT OF VALVE BOX - 1 EA.

☆ = REVISED SIGNAL

MATCH LINE -EY10- STA. 18 + 00.00 SEE SHEET UC-10