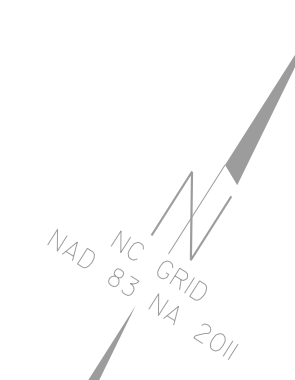


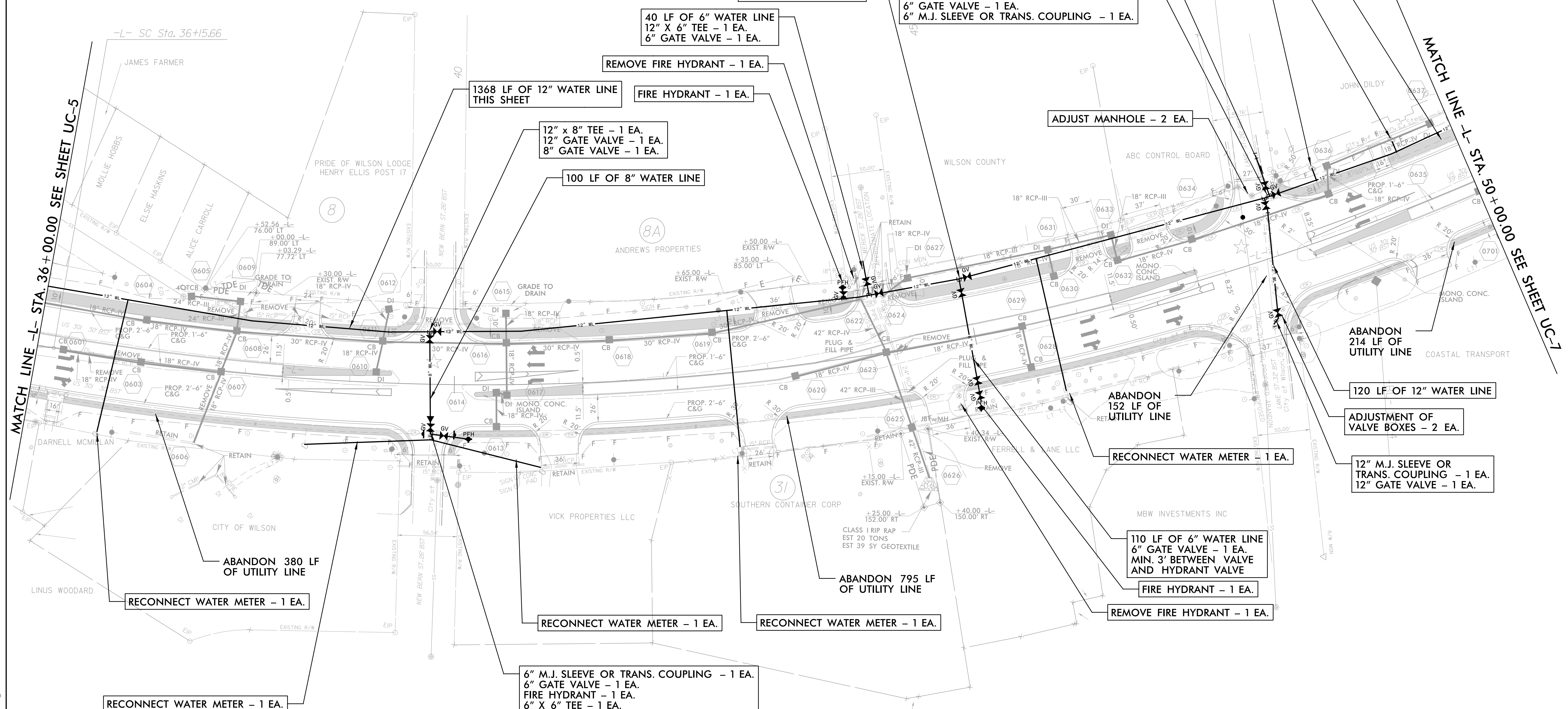
**DOCUMENT NOT CONSIDERED FINAL
UNTIL ALL SIGNATURES ARE COMPLETED**

-L-		
Pls Sta 35+66.66	Pl Sta 44+91.24	Pls Sta 53+43.81
Os = 1' 45" 16.9"	Δ = 40° 05' 11.7" (LT)	Os = 1' 45" 16.9"
Ls = 147.00'	D = 2' 23" 14.4"	Ls = 147.00'
LT = 98.00'	L = 1,679.14'	LT = 98.00'
ST = 49.00'	T = 875.58'	ST = 49.00'
	R = 2,400.00'	
	Ds = 50 MPH	
	SE = 0.04	
	RUNOFF = 147.00'	



UTILITY CONSTRUCTION

Michael Baker Engineering, Inc.
8630 University Parkway
Suite 600
Charlotte, NC 28217
Phone: 704.366.1200
Fax: 704.366.1201
NC License: F-1084



MATCH LINE -L- STA. 36 + 00.00 SEE SHEET UC-5

MATCH LINE -L- STA. 50 + 00.00 SEE SHEET UC-7

ABANDON 380 LF OF UTILITY LINE

RECONNECT WATER METER - 1 EA.

RECONNECT WATER METER - 1 EA.

1368 LF OF 12" WATER LINE THIS SHEET

12" x 8" TEE - 1 EA.
12" X 6" TEE - 1 EA.
8" GATE VALVE - 1 EA.

100 LF OF 8" WATER LINE

40 LF OF 6" WATER LINE
12" X 6" TEE - 1 EA.
6" GATE VALVE - 1 EA.

REMOVE FIRE HYDRANT - 1 EA.

FIRE HYDRANT - 1 EA.

12" x 6" TEE - 1 EA.
12" GATE VALVE - 1 EA.
6" GATE VALVE - 1 EA.

12" x 6" TEE - 1 EA.
12" X 12" TEE - 1 EA.
12" GATE VALVE - 1 EA.
6" GATE VALVE - 1 EA.
6" M.J. SLEEVE OR TRANS. COUPLING - 1 EA.

40 LF OF 6" WATER LINE

RECONNECT WATER METERS - 4 EA.

ADJUST MANHOLE - 2 EA.

RECONNECT WATER METER 1 EA.

110 LF OF 6" WATER LINE
6" GATE VALVE - 1 EA.
MIN. 3' BETWEEN VALVE AND HYDRANT VALVE

FIRE HYDRANT - 1 EA.

REMOVE FIRE HYDRANT - 1 EA.

ABANDON 214 LF OF UTILITY LINE

120 LF OF 12" WATER LINE

ADJUSTMENT OF VALVE BOXES - 2 EA.

12" M.J. SLEEVE OR TRANS. COUPLING - 1 EA.
12" GATE VALVE - 1 EA.

ABANDON 795 LF OF UTILITY LINE

RECONNECT WATER METER - 1 EA.

RECONNECT WATER METER - 1 EA.

6" M.J. SLEEVE OR TRANS. COUPLING - 1 EA.
6" GATE VALVE - 1 EA.
FIRE HYDRANT - 1 EA.
6" X 6" TEE - 1 EA.
ADJUSTMENT OF VALVE BOXES - 1 EA.
12" PLUG - 2 EA.
8" x 6" REDUCER - 1 EA.

THE ESTIMATED QUANTITY OF DUCTILE IRON WATER PIPE FITTINGS ON THIS PLAN SHEET IS 1309 POUNDS. THE ACTUAL QUANTITY AND TYPE OF FITTINGS WILL VARY BASED ON THE ACTUAL FIELD CONDITIONS.

THE ESTIMATED QUANTITY OF RESTRAINED JOINT WATER PIPE FOR THIS PLAN SHEET IS:
6" - 190 LF
8" - 100 LF
12" - 816 LF
THE ACTUAL QUANTITY WILL VARY BASED ON FIELD CONDITIONS. SEE SHEET UC-3E FOR LENGTHS FOR FITTINGS.

★ = REVISED SIGNAL