

5/14/99

DOCUMENT NOT CONSIDERED FINAL
UNTIL ALL SIGNATURES ARE COMPLETED

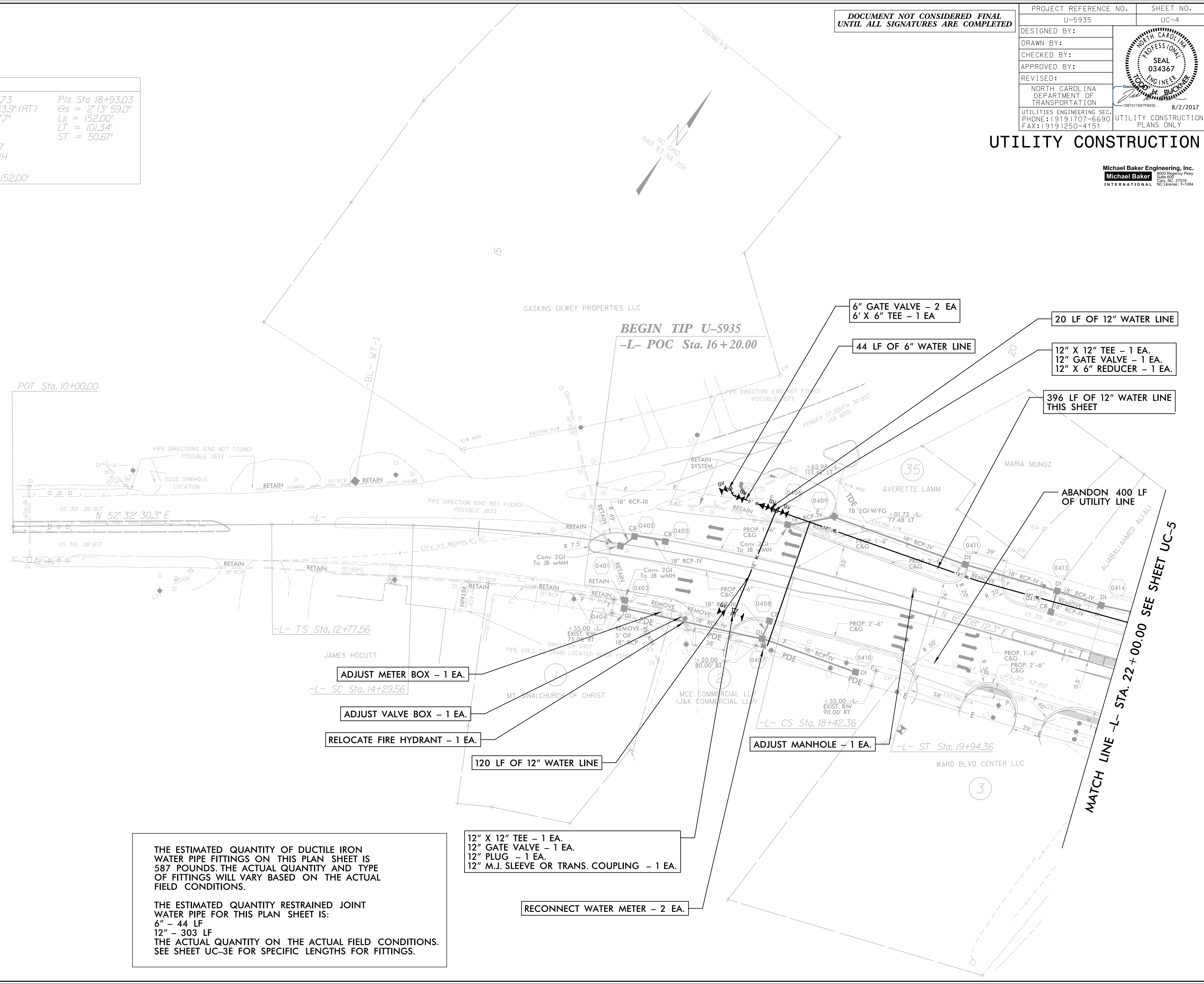
PROJECT REFERENCE NO.	U-5935	SHEET NO.	UC-4
DESIGNED BY:			
DRAWN BY:			
CHECKED BY:			
APPROVED BY:			
REVISER:		NORTH CAROLINA DEPARTMENT OF TRANSPORTATION UTILITIES ENGINEERING SECTION PHONE: (919) 707-6690 FAX: (919) 250-4151	
		UTILITY CONSTRUCTION PLANS ONLY 8/2/2017	

-L-		
Pls Sta 13+78.91 θs = 2° 13' 59.0" Ls = 152.00' LT = 101.34' ST = 50.67'	PI Sta 16+36.73 Δ = 12° 07' 43.9" (RT) D = 2° 56' 17.7" L = 412.79' T = 207.17' R = 1,950.00' Ds = 50 MPH SE = 0.04 RUNOFF = 152.00'	Pls Sta 18+93.03 θs = 2° 13' 59.0" Ls = 152.00' LT = 101.34' ST = 50.67'



UTILITY CONSTRUCTION

Michael Baker Engineering, Inc.
 800 Gregory Place
 Suite 600
 Cary, NC 27518
 NC License: P-1084



THE ESTIMATED QUANTITY OF DUCTILE IRON WATER PIPE FITTINGS ON THIS PLAN SHEET IS 587 POUNDS. THE ACTUAL QUANTITY AND TYPE OF FITTINGS WILL VARY BASED ON THE ACTUAL FIELD CONDITIONS.

THE ESTIMATED QUANTITY RESTRAINED JOINT WATER PIPE FOR THIS PLAN SHEET IS:
 6" - 44 LF
 12" - 303 LF
 THE ACTUAL QUANTITY ON THE ACTUAL FIELD CONDITIONS. SEE SHEET UC-3E FOR SPECIFIC LENGTHS FOR FITTINGS.

12" X 12" TEE - 1 EA.
 12" GATE VALVE - 1 EA.
 12" PLUG - 1 EA.
 12" M.J. SLEEVE OR TRANS. COUPLING - 1 EA.

RECONNECT WATER METER - 2 EA.

ADJUST METER BOX - 1 EA.

ADJUST VALVE BOX - 1 EA.

RELOCATE FIRE HYDRANT - 1 EA.

120 LF OF 12" WATER LINE

ADJUST MANHOLE - 1 EA.

6" GATE VALVE - 2 EA
 6' X 6" TEE - 1 EA

44 LF OF 6" WATER LINE

20 LF OF 12" WATER LINE

12" X 12" TEE - 1 EA.
 12" GATE VALVE - 1 EA.
 12" X 6" REDUCER - 1 EA.

396 LF OF 12" WATER LINE
 THIS SHEET

ABANDON 400 LF
 OF UTILITY LINE

MATCH LINE -L- STA. 22 + 00.00 SEE SHEET UC-5

8/2/2017 12:27:59 PM U-5935-UC-SHT_04.dgn
 USER: todd.buckner