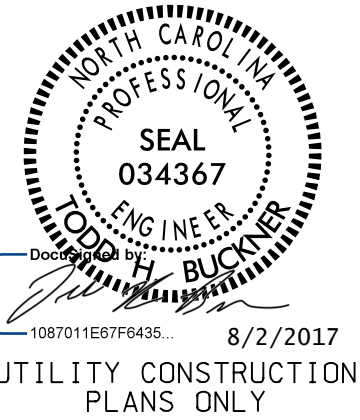


# PROJECT TYPICAL DETAILS

DOCUMENT NOT CONSIDERED FINAL  
UNTIL ALL SIGNATURES ARE COMPLETED

PROJECT REFERENCE NO. U-5935 SHEET NO. UC-3C

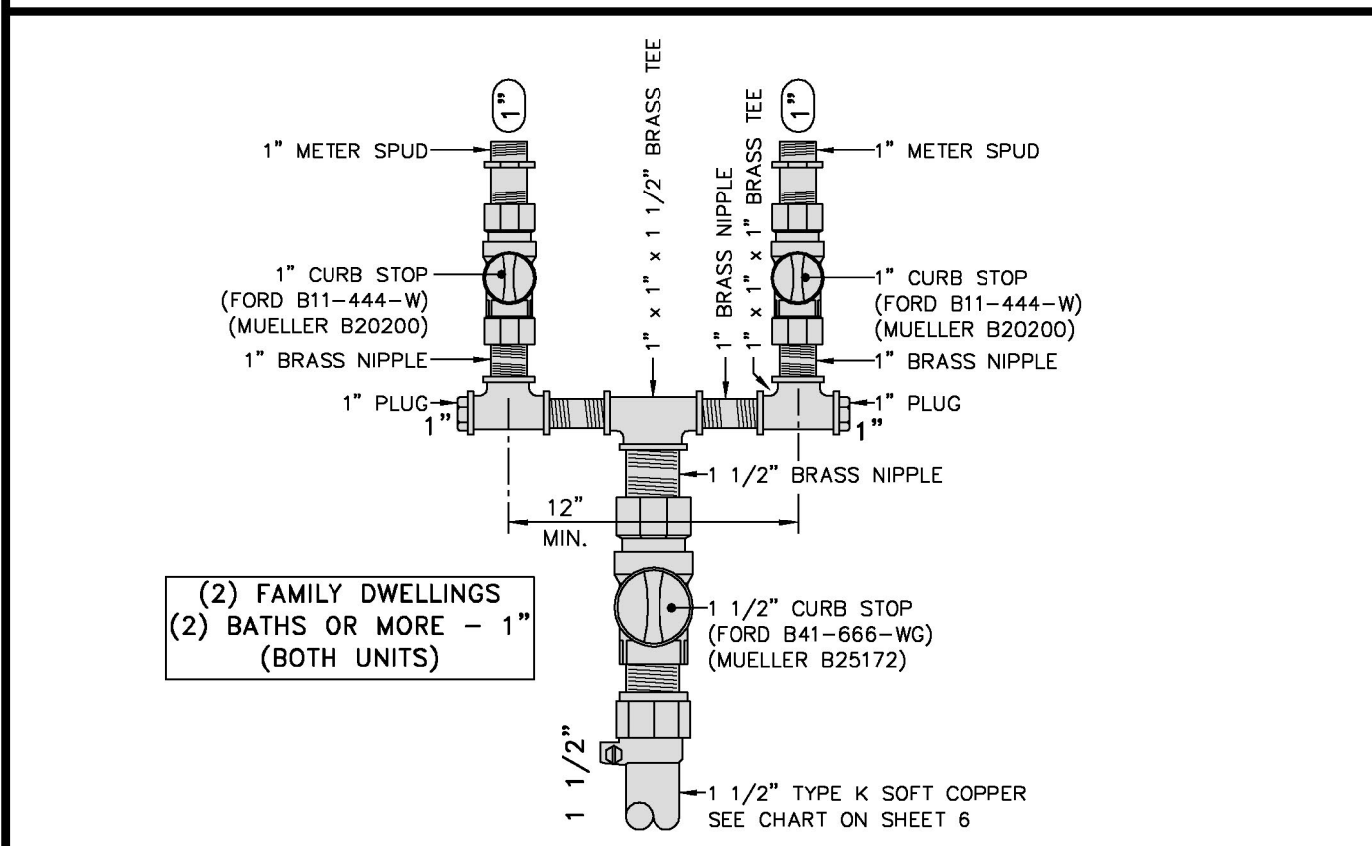
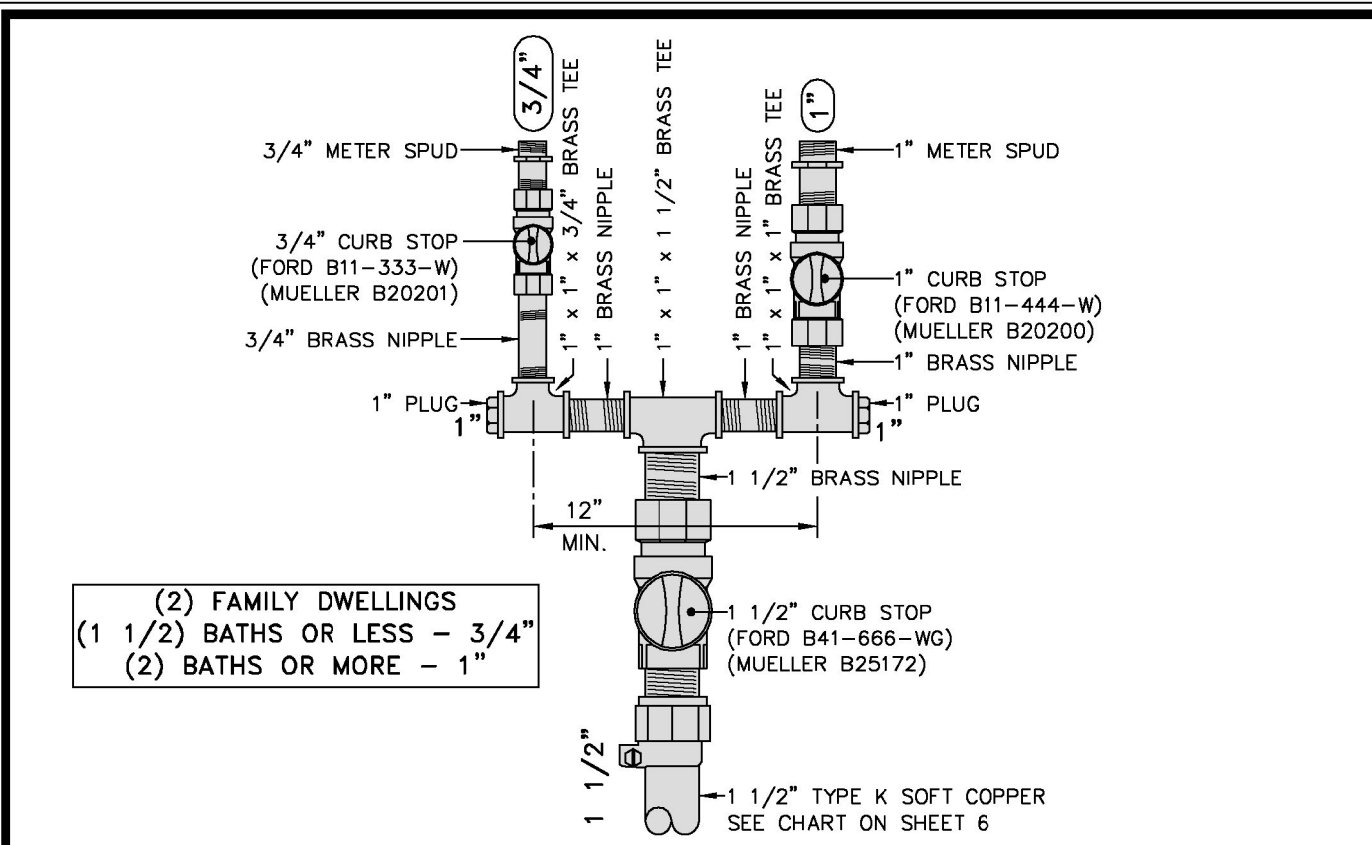


Michael Baker Engineering, Inc.  
Michael Baker  
INTERNATIONAL

DESIGNED BY:  
DRAWN BY:  
CHECKED BY:  
APPROVED BY:  
REVISED:  
NORTH CAROLINA  
DEPARTMENT OF  
TRANSPORTATION  
UTILITIES ENGINEERING SEC.  
PHONE: (919) 707-6690  
FAX: (919) 250-4151  
UTILITY CONSTRUCTION  
PLANS ONLY

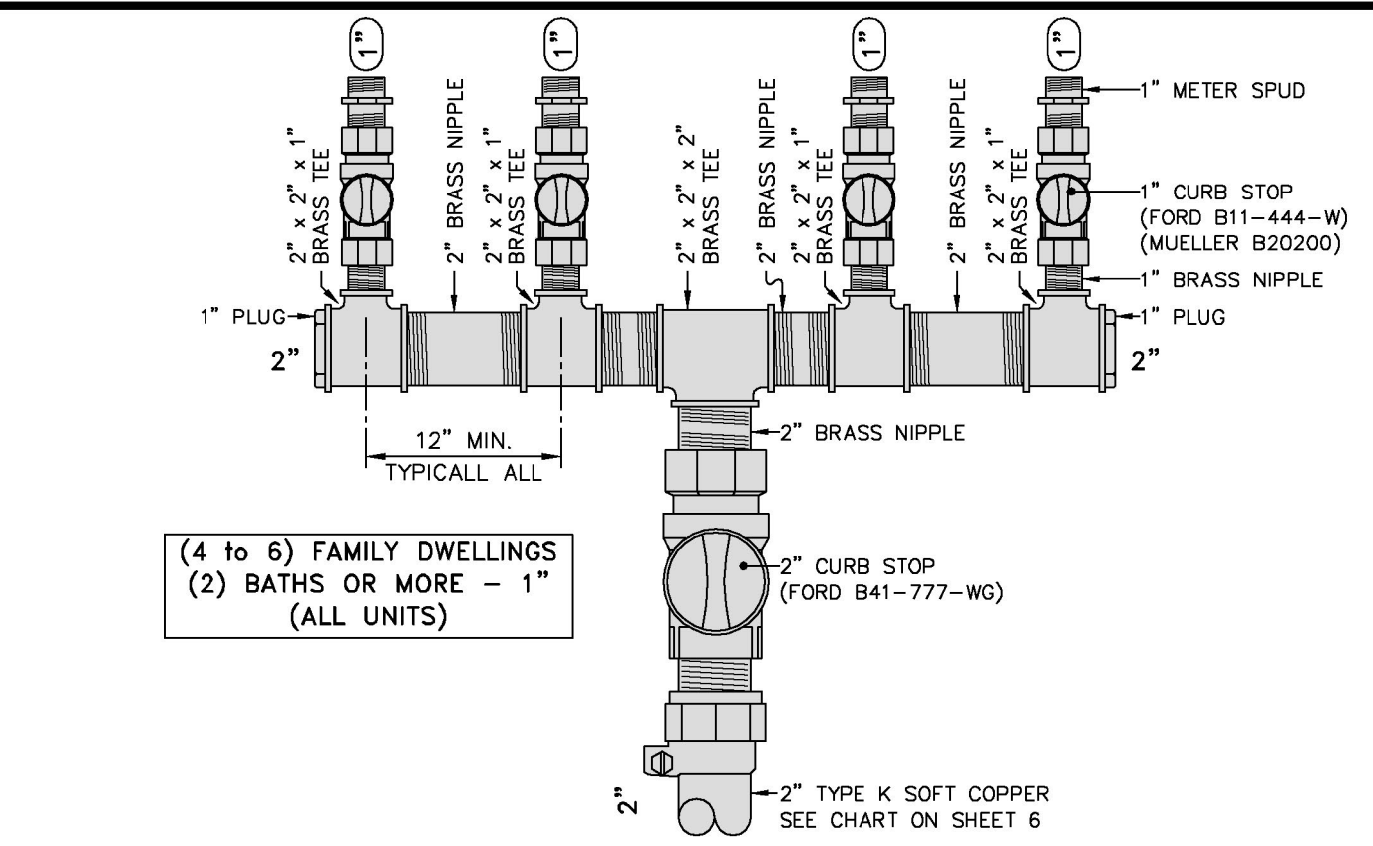
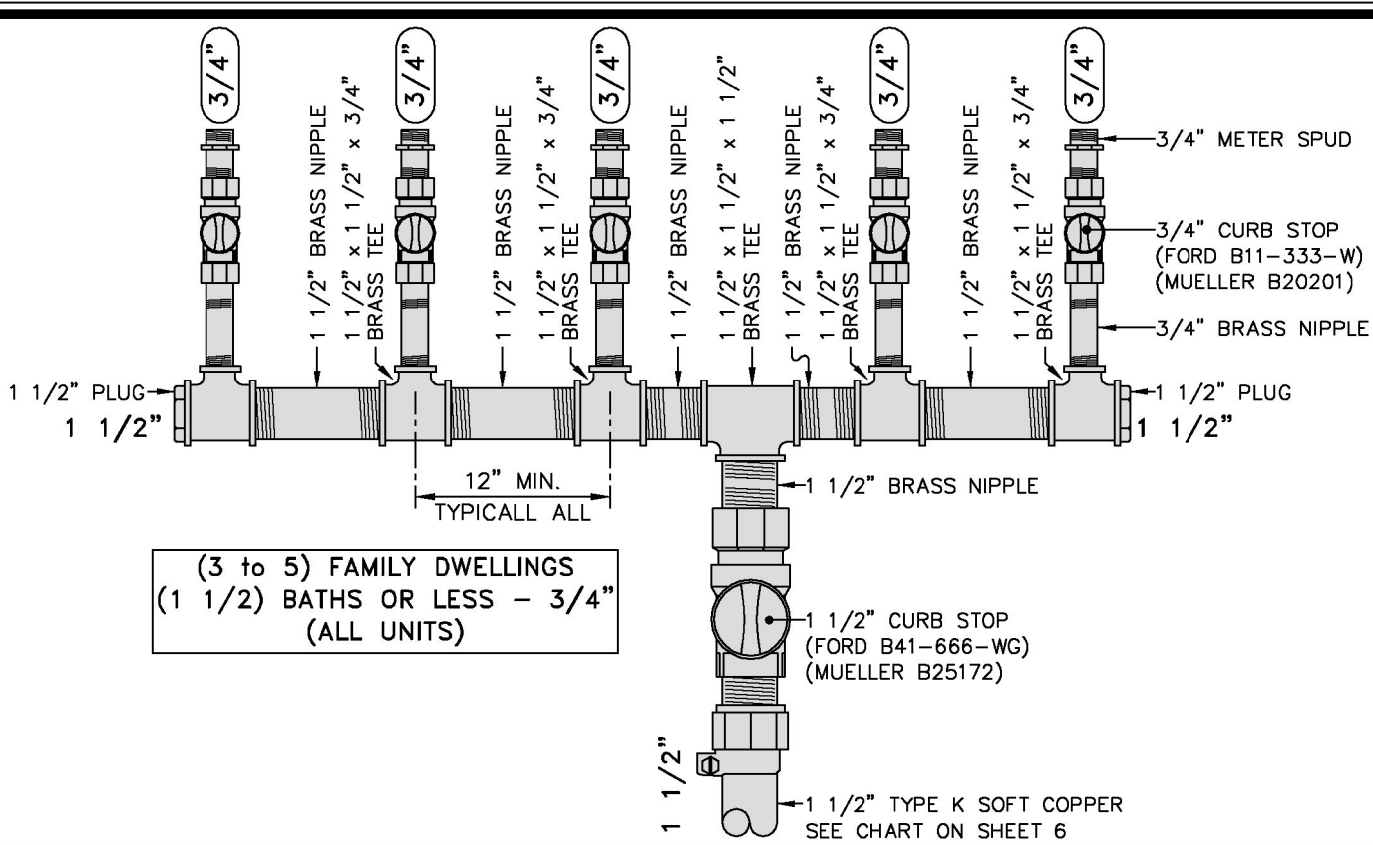
## UTILITY CONSTRUCTION

Details Provided by APPIAN Consulting Engineers - www.appianengineers.com 03/08/2016 - 5:39:20 PM



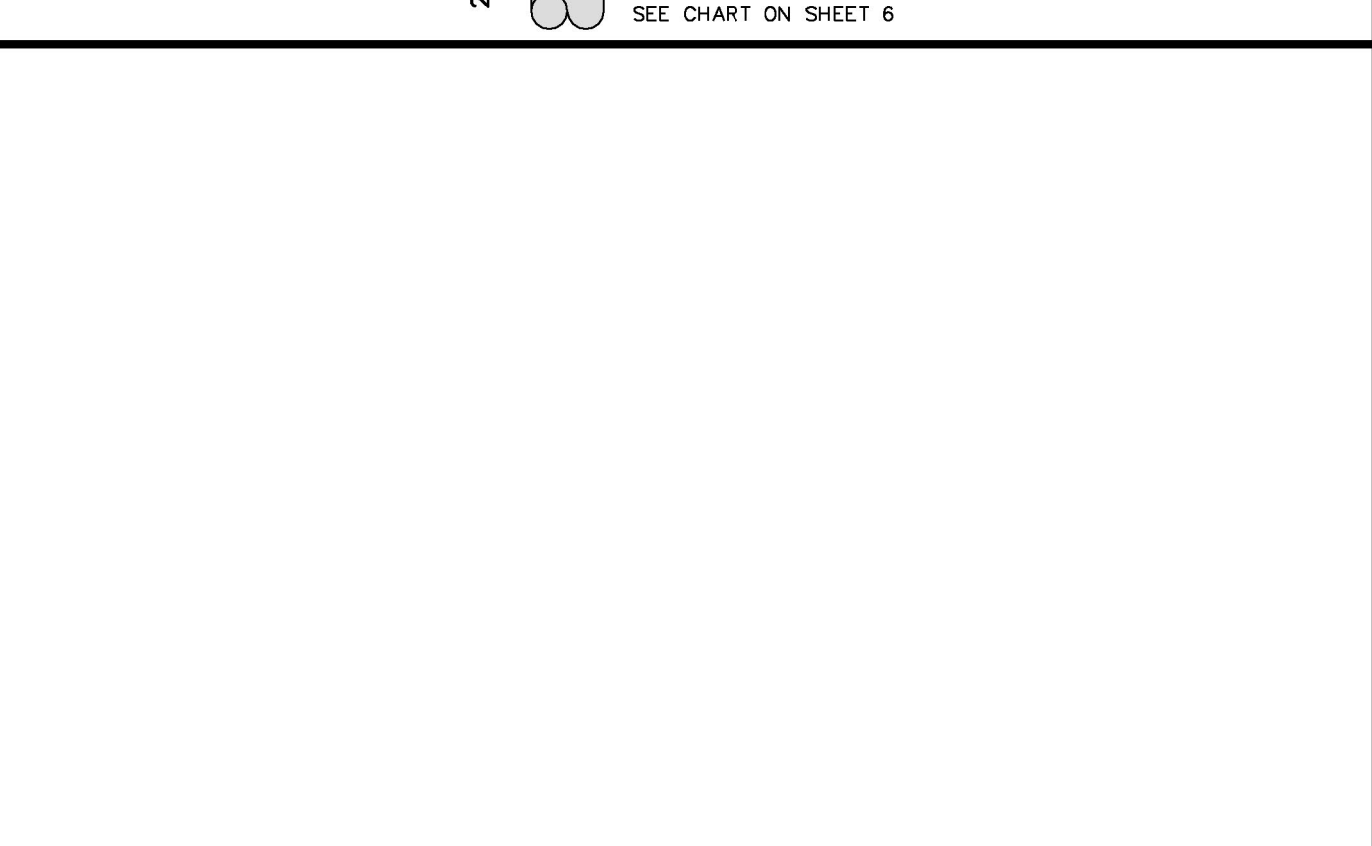
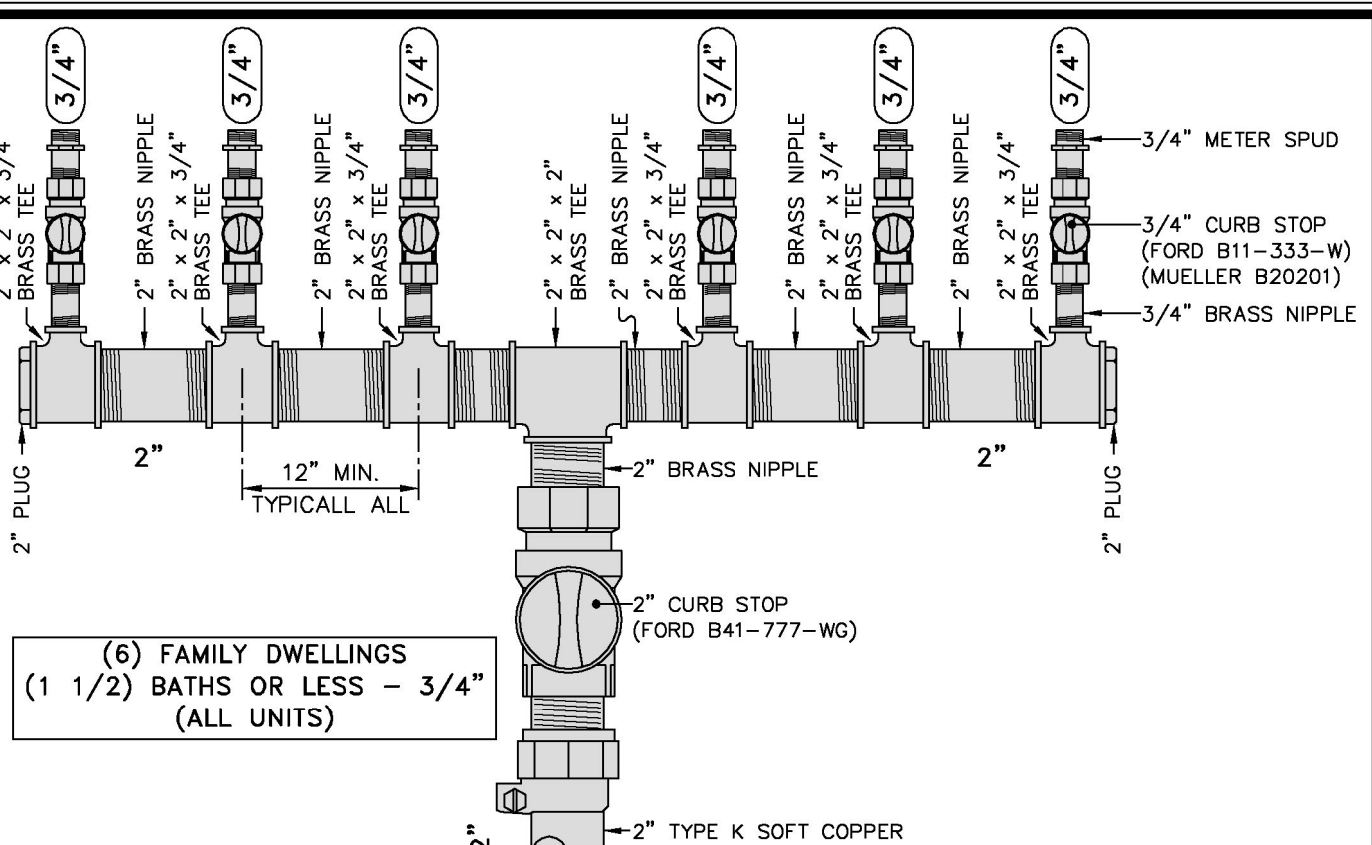
**CITY of WILSON, N.C.**  
Public Services Departments  
1800 Herring Avenue, / P.O. Box 10  
Wilson, North Carolina 27894  
Voice (252) 399-2465  
FAX (252) 399-2453  
www.wilsonnc.org  
SCALE: Not To Scale  
DETAIL # 515.02  
REVISION DATE: March, 2016  
SHEET # 3 of 6

Details Provided by APPIAN Consulting Engineers - www.appianengineers.com 03/08/2016 - 5:38:11 PM



**CITY of WILSON, N.C.**  
Public Services Departments  
1800 Herring Avenue, / P.O. Box 10  
Wilson, North Carolina 27894  
Voice (252) 399-2465  
FAX (252) 399-2453  
www.wilsonnc.org  
SCALE: Not To Scale  
DETAIL # 515.02  
REVISION DATE: March, 2016  
SHEET # 4 of 6

Details Provided by APPIAN Consulting Engineers - www.appianengineers.com 03/08/2016 - 5:38:00 PM



**CITY of WILSON, N.C.**  
Public Services Departments  
1800 Herring Avenue, / P.O. Box 10  
Wilson, North Carolina 27894  
Voice (252) 399-2465  
FAX (252) 399-2453  
www.wilsonnc.org  
SCALE: Not To Scale  
DETAIL # 515.02  
REVISION DATE: March, 2016  
SHEET # 5 of 6

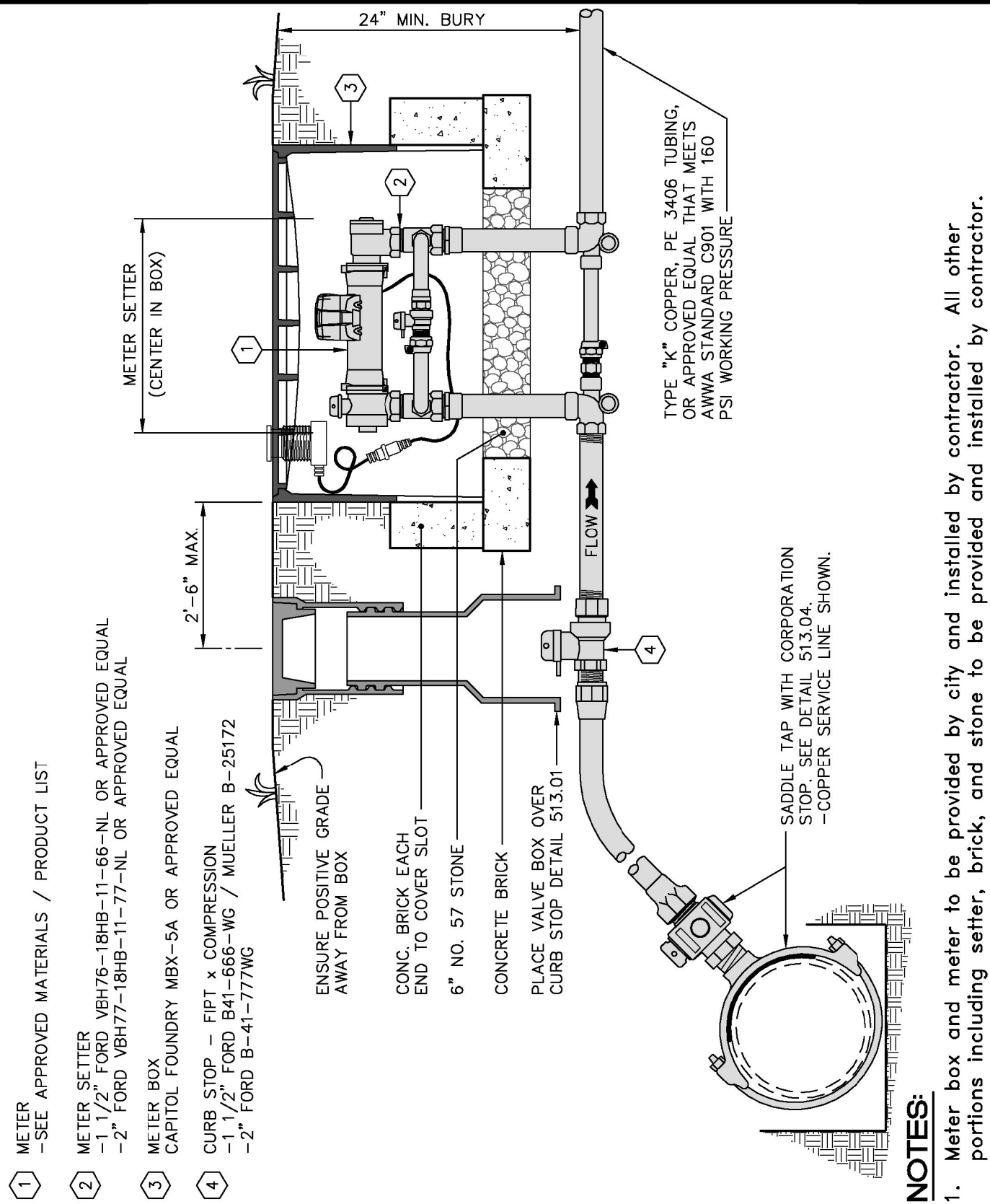
Details Provided by APPIAN Consulting Engineers - www.appianengineers.com 03/08/2016 - 5:39:59 PM

# Of Residential Units	QTY. EACH TYPE	# of Size Curb Stops	Service & Tap Size
(1) Single Family	SINGLE FAMILY	1"	1"
(2) Duplex Unit	(2) 2 BATHS OR MORE	(2) 1"	1 1/2"
	(1) 2 BATHS OR MORE	(1) 1"	1 1/2"
	(1) 1 1/2 BATHS OR LESS	(1) 3/4"	1"
	(2) 1 1/2 BATHS OR LESS	(2) 3/4"	1"
(3) Triplex Unit	(3) 2 BATHS OR MORE	(3) 1"	1 1/2"
	(2) 2 BATHS OR MORE	(2) 1"	1 1/2"
	(1) 2 BATHS OR MORE	(1) 1"	1 1/2"
	(2) 1 1/2 BATHS OR LESS	(2) 3/4"	1 1/2"
	(3) 1 1/2 BATHS OR LESS	(3) 3/4"	1 1/2"
(4) Units	(4) 2 BATHS OR MORE	(4) 1"	2"
	(3) 2 BATHS OR MORE	(3) 1"	2"
	(1) 1 1/2 BATHS OR LESS	(1) 3/4"	1 1/2"
	(2) 2 BATHS OR MORE	(2) 1"	1 1/2"
(5) Units	(5) 2 BATHS OR MORE	(5) 1"	2"
	(4) 2 BATHS OR MORE	(4) 1"	2"
	(1) 1 1/2 BATHS OR LESS	(1) 3/4"	2"
	(3) 2 BATHS OR MORE	(3) 1"	2"
	(2) 2 BATHS OR MORE	(2) 1"	2"
(6) Units	(6) 2 BATHS OR MORE	(6) 1"	2"
	(5) 2 BATHS OR MORE	(5) 1"	2"
	(1) 1 1/2 BATHS OR LESS	(1) 3/4"	2"
	(4) 2 BATHS OR MORE	(4) 1"	2"
	(3) 2 BATHS OR MORE	(3) 1"	2"
	(2) 2 BATHS OR MORE	(2) 1"	2"

**NOTES:**  
1 1/2 Baths Or Less per Residential Unit = 3/4" Curb Stop  
2 Baths Or More per Residential Unit = 1" Curb Stop

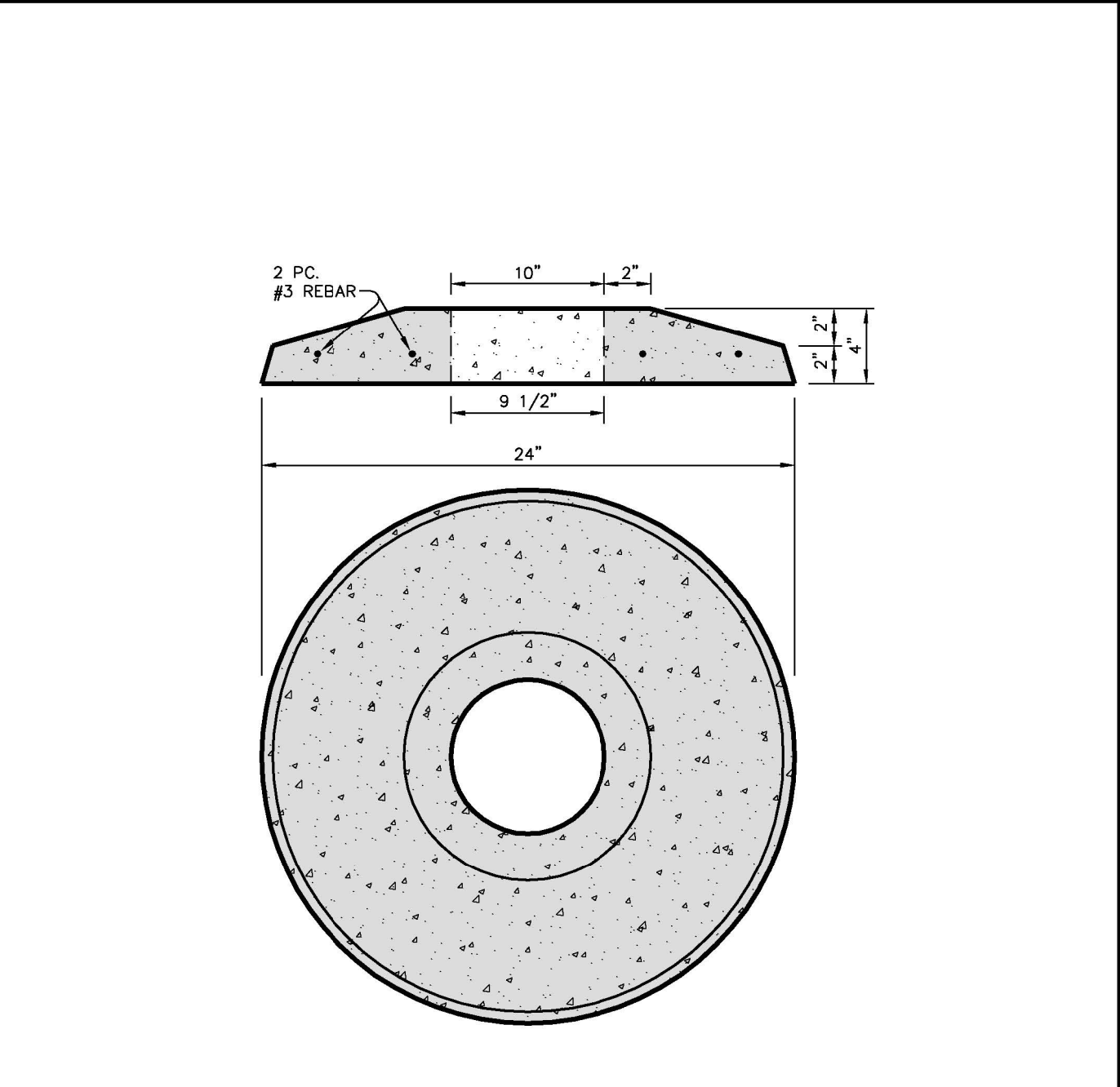
**CITY of WILSON, N.C.**  
Public Services Departments  
1800 Herring Avenue, / P.O. Box 10  
Wilson, North Carolina 27894  
Voice (252) 399-2465  
FAX (252) 399-2453  
www.wilsonnc.org  
SCALE: Not To Scale  
DETAIL # 515.02  
REVISION DATE: March, 2016  
SHEET # 6 of 6

Details Provided by APPIAN Consulting Engineers - www.appianengineers.com 03/08/2016 - 5:40:50 PM



**CITY of WILSON, N.C.**  
Public Services Departments  
1800 Herring Avenue, / P.O. Box 10  
Wilson, North Carolina 27894  
Voice (252) 399-2465  
FAX (252) 399-2453  
www.wilsonnc.org  
SCALE: Not To Scale  
DETAIL # 515.03  
REVISION DATE: March, 2016  
SHEET # 1 of 1

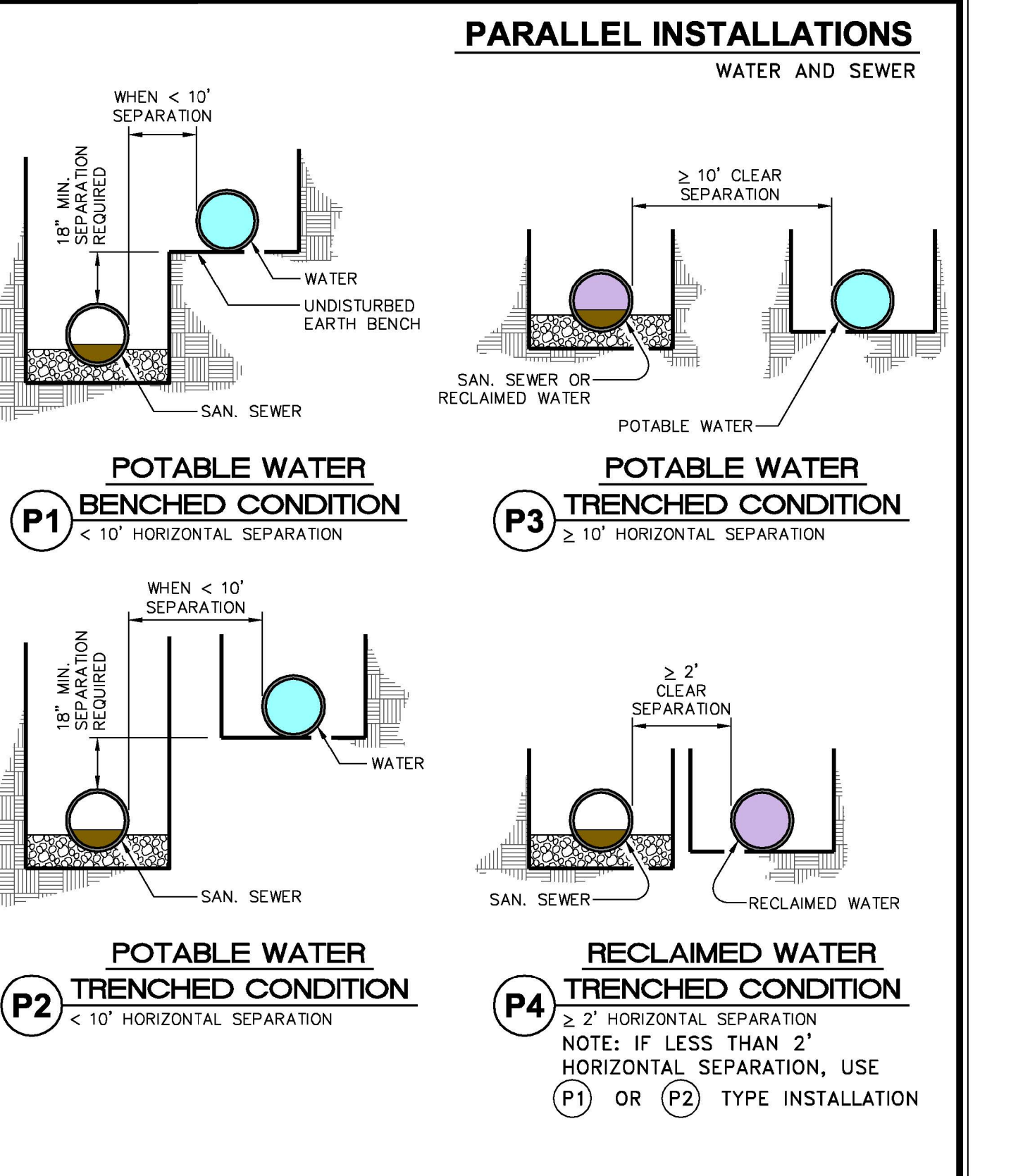
Details Provided by APPIAN Consulting Engineers - www.appianengineers.com 05/06/2010 - 12:48:53 PM



**NOTES:**  
1. Valve box pad is to be made of class a concrete (3000 psi @ 28 days).  
2. Valve box pad can be obtained from: Stallings Septic Tank, Greenville, Pump And Lighting, Kinston Masonry Supply, Inc., Selma  
3. This detail applied to non-paved, non-traffic loaded areas only. Otherwise use a 2' x 2' x 12" thick 3,000 psi concrete stabilization pad in paved and traffic loaded areas.

**CITY of WILSON, N.C.**  
Public Services Departments  
1800 Herring Avenue, / P.O. Box 10  
Wilson, North Carolina 27894  
Voice (252) 399-2465  
FAX (252) 399-2453  
www.wilsonnc.org  
SCALE: Not To Scale  
DETAIL # 516.02  
REVISION DATE: June, 2010  
SHEET # 1 of 1

Details Provided by APPIAN Consulting Engineers - www.appianengineers.com 07/31/2013 - 12:15:10 PM



**CITY of WILSON, N.C.**  
Public Services Departments  
1800 Herring Avenue, / P.O. Box 10  
Wilson, North Carolina 27894  
Voice (252) 399-2465  
FAX (252) 399-2453  
www.wilsonnc.org  
SCALE: Not To Scale  
DETAIL # C01.04  
REVISION DATE: June, 2010  
SHEET # 1 of 5

5/14/99  
02-AUG-2017 13:15 935-UC-SHT\_02.dgn