

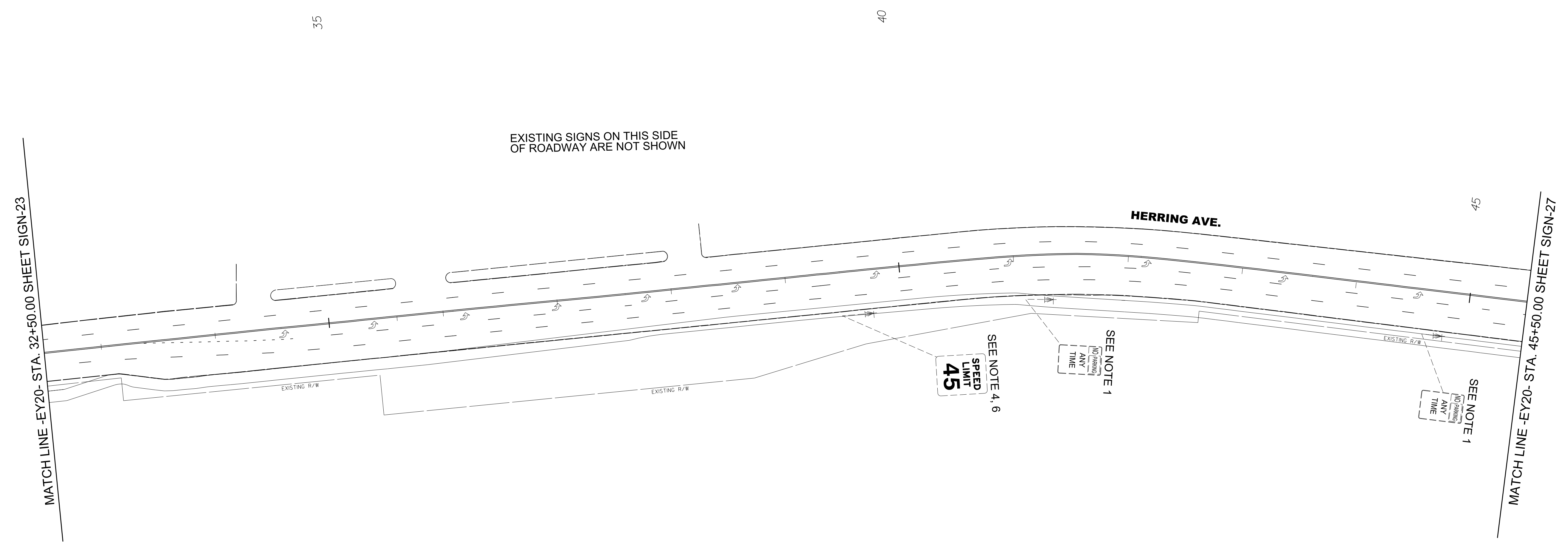
SEAL

DocuSigned by:
George Karageorge
5307138EFD0446

7/12/2017

DOCUMENT NOT CONSIDERED FINAL UNLESS ALL SIGNATURES COMPLETED

Michael Baker
INTERNATIONAL



EXISTING SIGNING NOTES

- 1 DISPOSAL OF SIGN SYSTEM, U-CHANNEL
- 2 DISPOSAL OF SIGN SYSTEM, WOOD
- 3 SIGN ERECTION, RELOCATE SIGN TYPE D
- 4 SIGN ERECTION, RELOCATE SIGN TYPE E
- 5 SIGN ERECTION, RELOCATE SIGN TYPE F
- 6 DISPOSAL OF SUPPORT, U-CHANNEL
- 7 DISPOSAL OF SUPPORT, WOOD
- 8 DISPOSAL OF SIGN D, E, F

EXISTING SIGNS
-EY20- STA. 32+50 TO 45+50