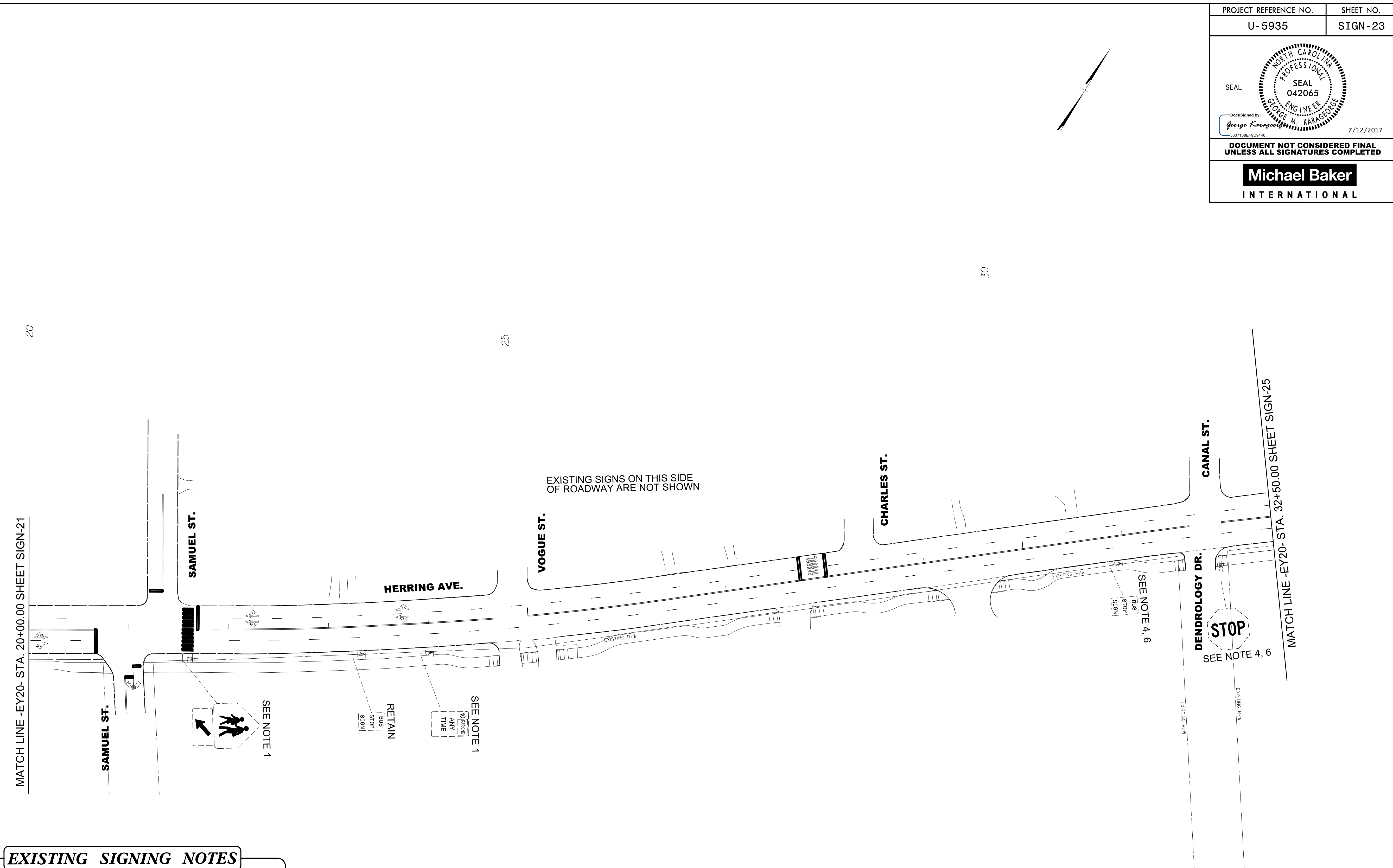


PROJECT REFERENCE NO.	SHEET NO.
U-5935	SIGN-23
<small>DocuSigned by: George Karageorge 3307138E9D9446</small>	
7/12/2017	
DOCUMENT NOT CONSIDERED FINAL UNLESS ALL SIGNATURES COMPLETED	



- EXISTING SIGNING NOTES**
- 1 DISPOSAL OF SIGN SYSTEM, U-CHANNEL
 - 2 DISPOSAL OF SIGN SYSTEM, WOOD
 - 3 SIGN ERECTION, RELOCATE SIGN TYPE D
 - 4 SIGN ERECTION, RELOCATE SIGN TYPE E
 - 5 SIGN ERECTION, RELOCATE SIGN TYPE F
 - 6 DISPOSAL OF SUPPORT, U-CHANNEL
 - 7 DISPOSAL OF SUPPORT, WOOD
 - 8 DISPOSAL OF SIGN D, E, F

EXISTING SIGNS
-EY20- STA. 20+00 TO 32+50

7/10/2017
 R:\Tr\office\Signing\CADD\Signing Layout\ Plans\PLAN SHEETS\U-5935_SIGN_psh_23.dgn
 User: bjr-gjt-mackenzie