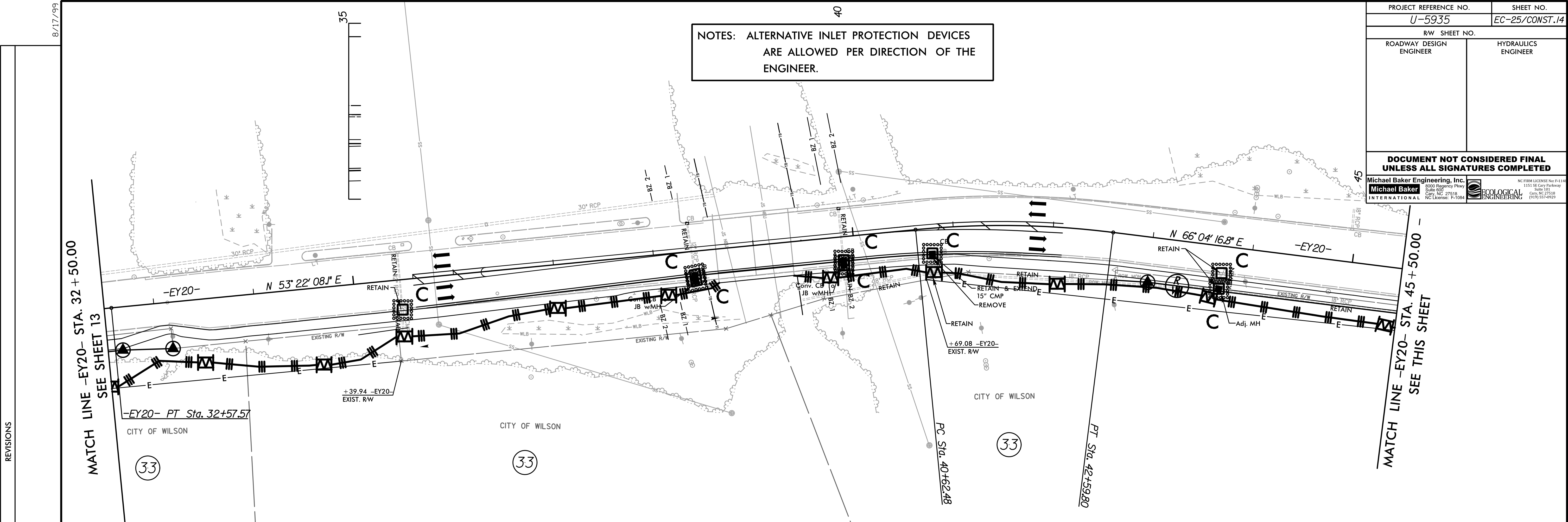
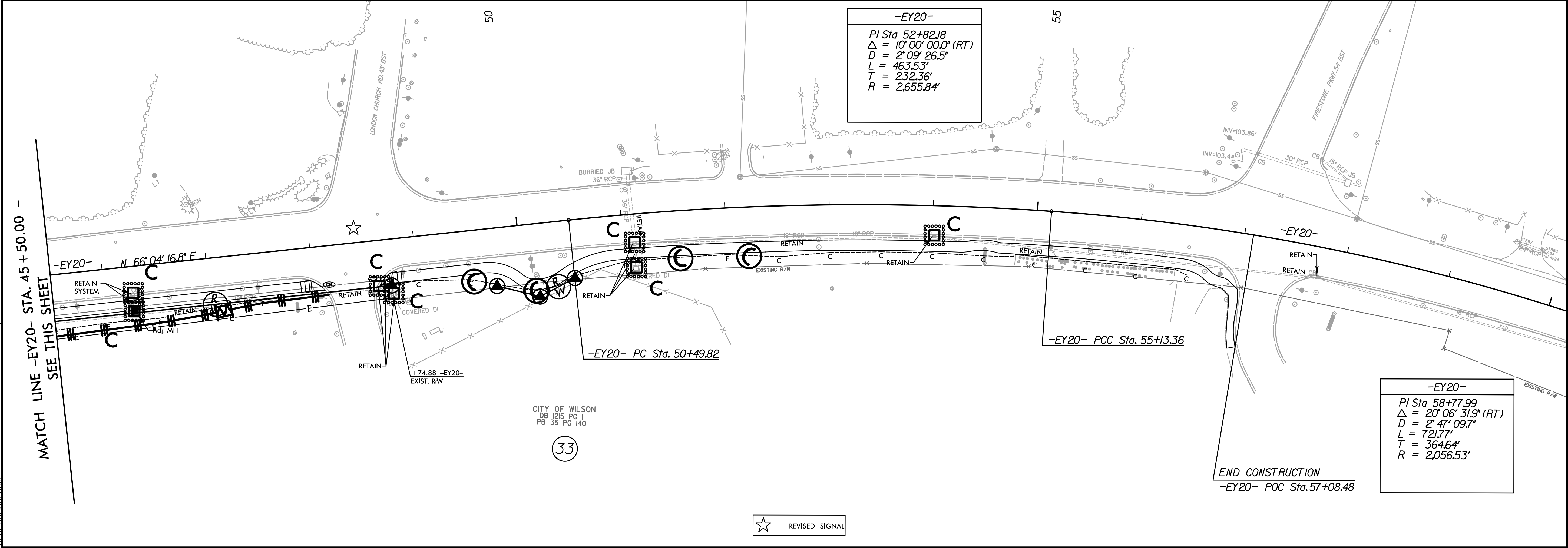


PROJECT REFERENCE NO.	SHEET NO.
U-5935	EC-25/CONST.14
RW SHEET NO.	
ROADWAY DESIGN ENGINEER	HYDRAULICS ENGINEER
<b>DOCUMENT NOT CONSIDERED FINAL UNLESS ALL SIGNATURES COMPLETED</b>	
Michael Baker Engineering, Inc. 8000 Piedmont Place Suite 600 Cary, NC 27518 NC License: P-1084	ECOLOGICAL ENGINEERING NC License: P-1114 1101 S. Cary Parkway Suite 101 Cary, NC 27518 (919) 557-0929

NOTES: ALTERNATIVE INLET PROTECTION DEVICES ARE ALLOWED PER DIRECTION OF THE ENGINEER.



REVISIONS



-EY20-  
 PI Sta 52+82.18  
 $\Delta = 10^{\circ} 00' 00.0\"$  (RT)  
 $D = 2^{\circ} 09' 26.5\"$   
 $L = 463.53'$   
 $T = 232.36'$   
 $R = 2,655.84'$

-EY20-  
 PI Sta 58+77.99  
 $\Delta = 20^{\circ} 06' 31.9\"$  (RT)  
 $D = 2^{\circ} 47' 09.7\"$   
 $L = 721.77'$   
 $T = 364.64'$   
 $R = 2,056.53'$

END CONSTRUCTION  
 -EY20- POC Sta. 57+08.48

☆ = REVISED SIGNAL

8/17/99  
 3:20:31 PM  
 R:\Environmental\Design\U-5935\_REU\_PSH\_14\_FINAL.dgn  
 Brandon