

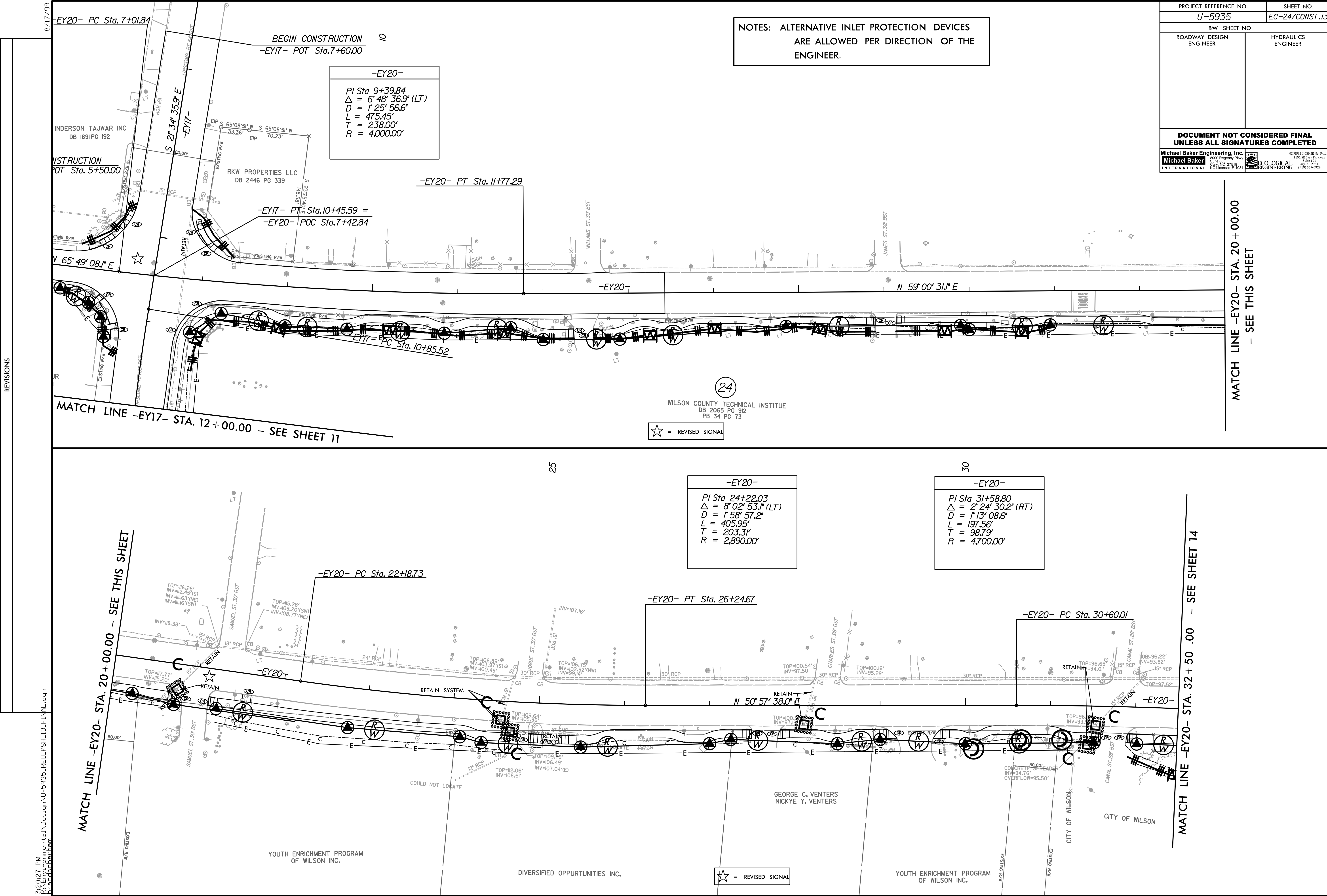
PROJECT REFERENCE NO.	SHEET NO.
U-5935	EC-24/CONST.13
RW SHEET NO.	
ROADWAY DESIGN ENGINEER	HYDRAULICS ENGINEER
<b>DOCUMENT NOT CONSIDERED FINAL UNLESS ALL SIGNATURES COMPLETED</b>	
Michael Baker Engineering, Inc. 8000 Progress Plaza Suite 600 Cary, NC 27518 NC License: F-1084	ECOLOGICAL ENGINEERING NC FROM LICENSE No. F-114 1101 S. Cary Parkway Suite 101 Cary, NC 27518 (919) 557-0929

NOTES: ALTERNATIVE INLET PROTECTION DEVICES ARE ALLOWED PER DIRECTION OF THE ENGINEER.

**-EY20-**  
 PI Sta 9+39.84  
 $\Delta = 6' 48' 36.9''$  (LT)  
 $D = 1' 25' 56.6''$   
 $L = 475.45'$   
 $T = 238.00'$   
 $R = 4,000.00'$

**-EY20-**  
 PI Sta 24+22.03  
 $\Delta = 8' 02' 53.1''$  (LT)  
 $D = 1' 58' 57.2''$   
 $L = 405.95'$   
 $T = 203.31'$   
 $R = 2,890.00'$

**-EY20-**  
 PI Sta 31+58.80  
 $\Delta = 2' 24' 30.2''$  (RT)  
 $D = 1' 13' 08.6''$   
 $L = 197.56'$   
 $T = 98.79'$   
 $R = 4,700.00'$



REVISIONS

MATCH LINE -EY20- STA. 20 + 00.00  
 - SEE THIS SHEET

MATCH LINE -EY20- STA. 32 + 50 .00 - SEE SHEET 14

☆ = REVISED SIGNAL

☆ = REVISED SIGNAL

3/20/21, PM  
 R:\Environmental\Design\U-5935\_REU\_PSH\_13\_FINAL.dgn  
 Brandon

8/17/99