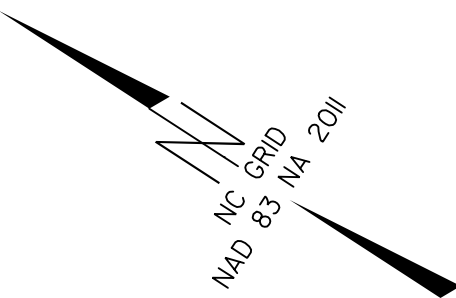


8/17/99

PROJECT REFERENCE NO.		SHEET NO.	
U-5935		EC-22/CONST.II	
RW SHEET NO.			
ROADWAY DESIGN ENGINEER		HYDRAULICS ENGINEER	
<b>DOCUMENT NOT CONSIDERED FINAL UNLESS ALL SIGNATURES COMPLETED</b>			
Michael Baker Engineering, Inc. Michael Baker INTERNATIONAL		ECOLOGICAL ENGINEERING	

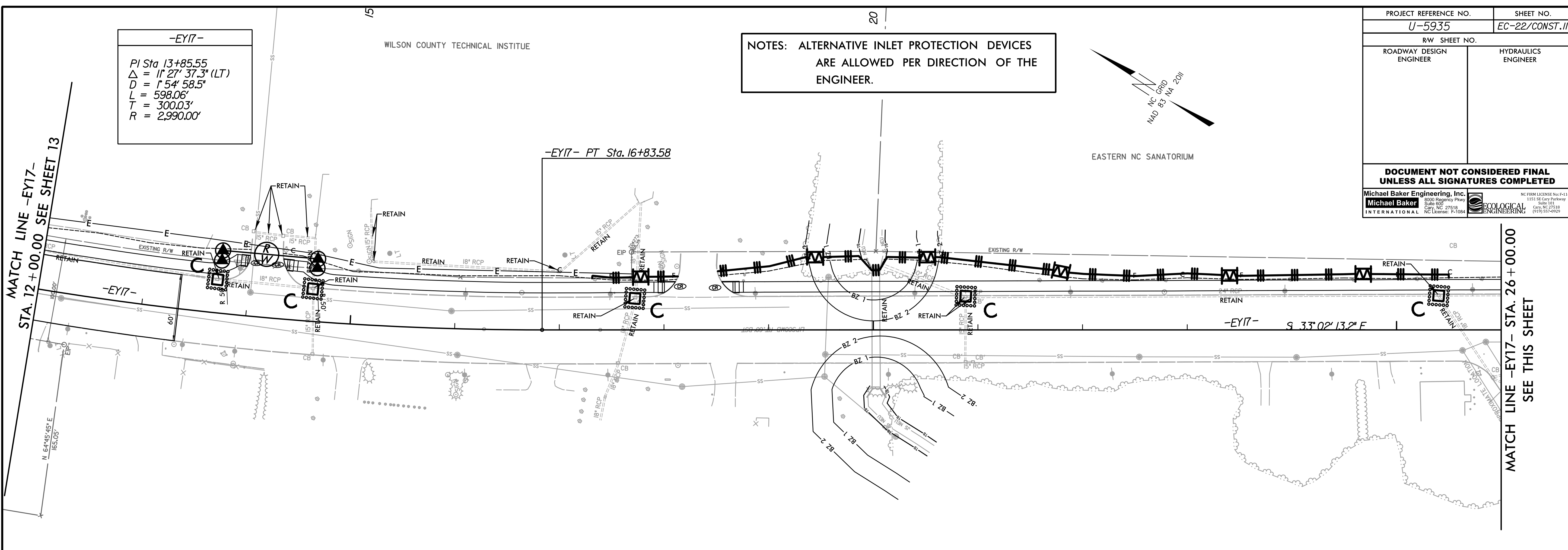
NOTES: ALTERNATIVE INLET PROTECTION DEVICES ARE ALLOWED PER DIRECTION OF THE ENGINEER.



-EY17-  
 PI Sta 13+85.55  
 $\Delta = 11' 27' 37.3" (LT)$   
 $D = 1' 54' 58.5"$   
 $L = 598.06'$   
 $T = 300.03'$   
 $R = 2,990.00'$

MATCH LINE -EY17- STA. 12 + 00.00 SEE SHEET 13

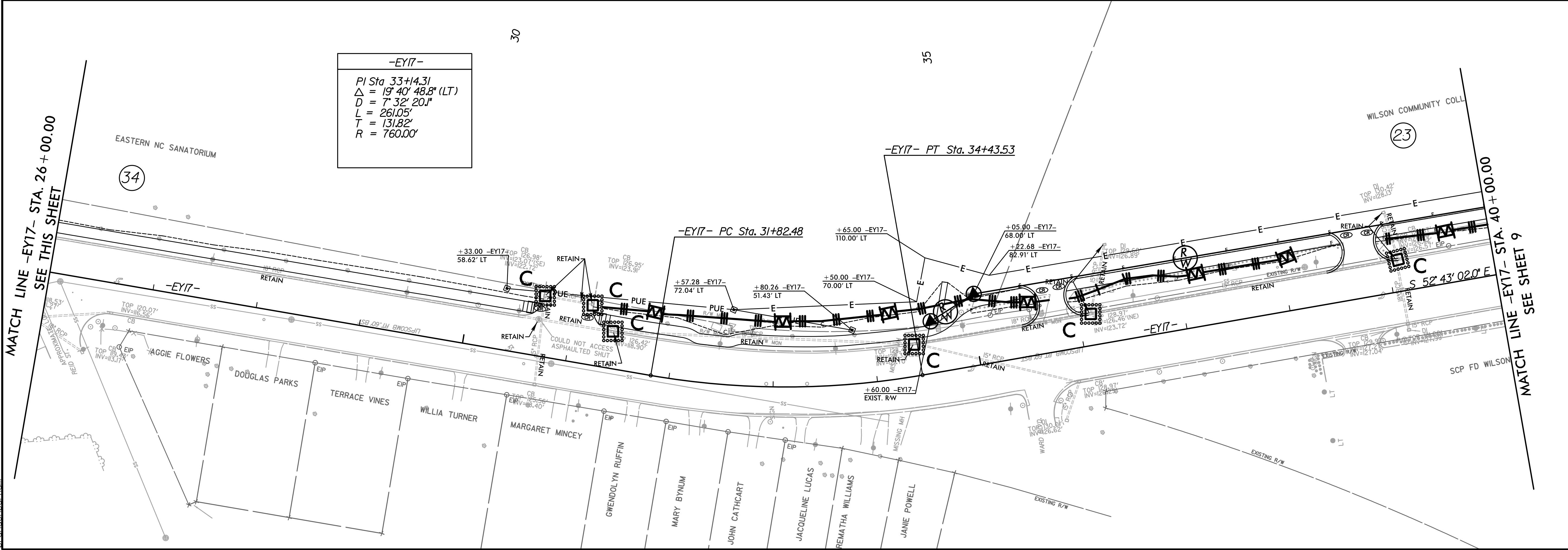
MATCH LINE -EY17- STA. 26 + 00.00 SEE THIS SHEET



-EY17-  
 PI Sta 33+44.31  
 $\Delta = 19' 40' 48.8" (LT)$   
 $D = 7' 32' 20.1"$   
 $L = 261.05'$   
 $T = 131.82'$   
 $R = 760.00'$

MATCH LINE -EY17- STA. 26 + 00.00 SEE THIS SHEET

MATCH LINE -EY17- STA. 40 + 00.00 SEE SHEET 9



3:20:21 PM  
 R:\Environmental\Design\U-5935\_REU\_PSH\_11.FINAL.dgn  
 Brandon