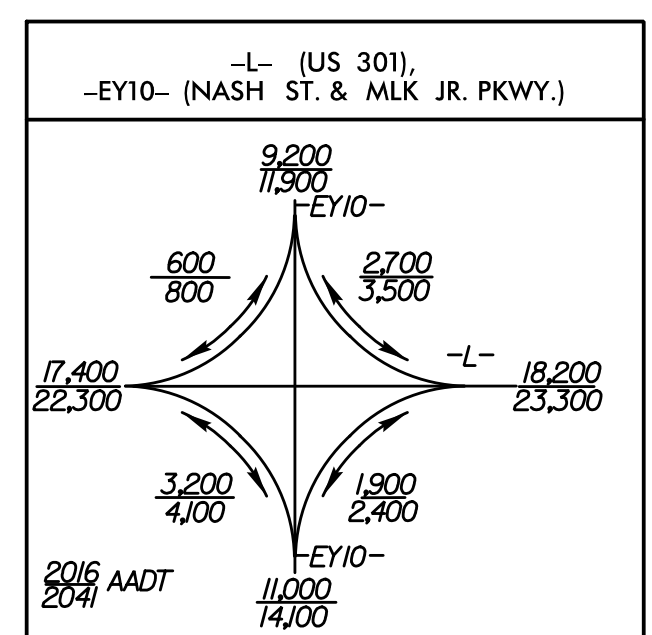
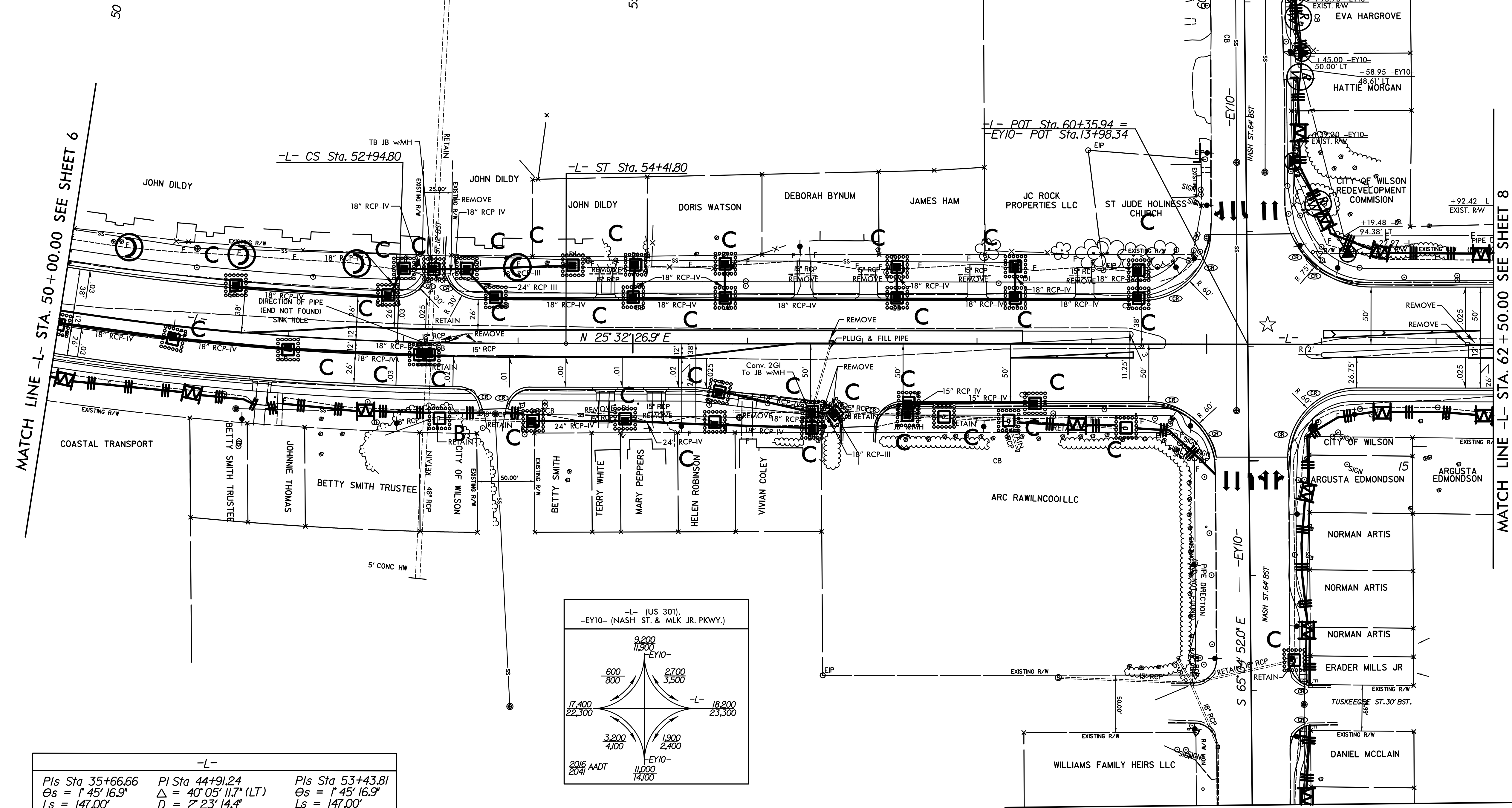


NOTES: ALTERNATIVE INLET PROTECTION DEVICES ARE ALLOWED PER DIRECTION OF THE ENGINEER.



-L-		
Pls Sta 35+66.66	Pls Sta 44+91.24	Pls Sta 53+43.81
$\theta_s = 1^\circ 45' 16.9''$	$\Delta = 40^\circ 05' 11.7''$ (LT)	$\theta_s = 1^\circ 45' 16.9''$
$L_s = 147.00'$	$D = 2^\circ 23' 14.4''$	$L_s = 147.00'$
$LT = 98.00'$	$L = 1,679.14'$	$LT = 98.00'$
$ST = 49.00'$	$T = 875.58'$	$ST = 49.00'$
	$R = 2,400.00'$	
	$D_s = 50$ MPH	
	$SE = 0.04$	
	$RUNOFF = 147.00'$	

★ = REVISED SIGNAL

MATCH LINE -EY10- STA. 18+00.00 SEE SHEET 10

FOR -L- PROFILE SEE SHEET 18

8/11/99  
 3:20:08 PM  
 \enviro\com\m\N-U-5935.REU\_PSH.07\_FINAL.dgn