

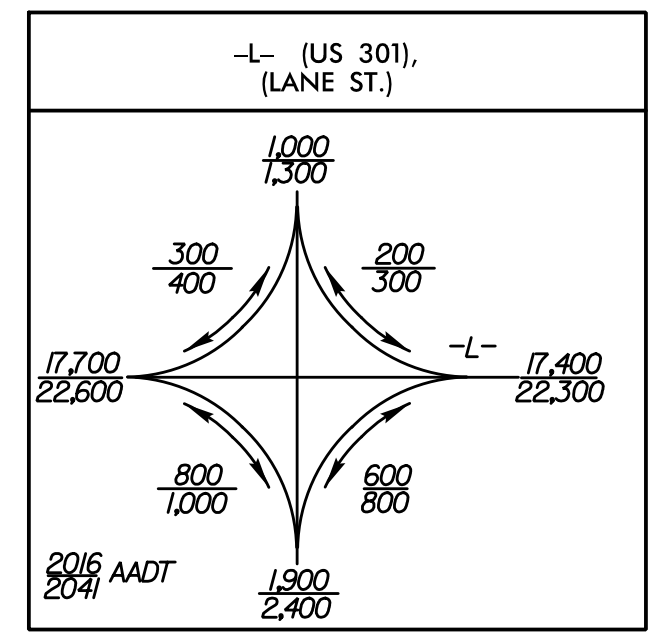
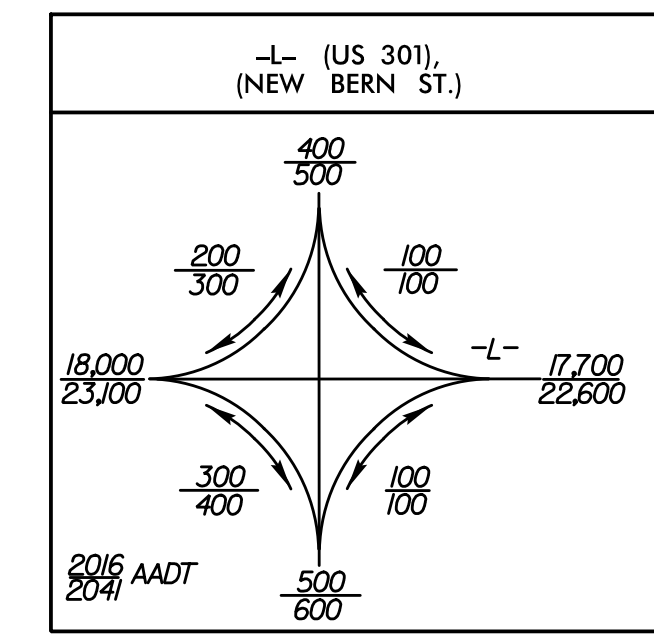
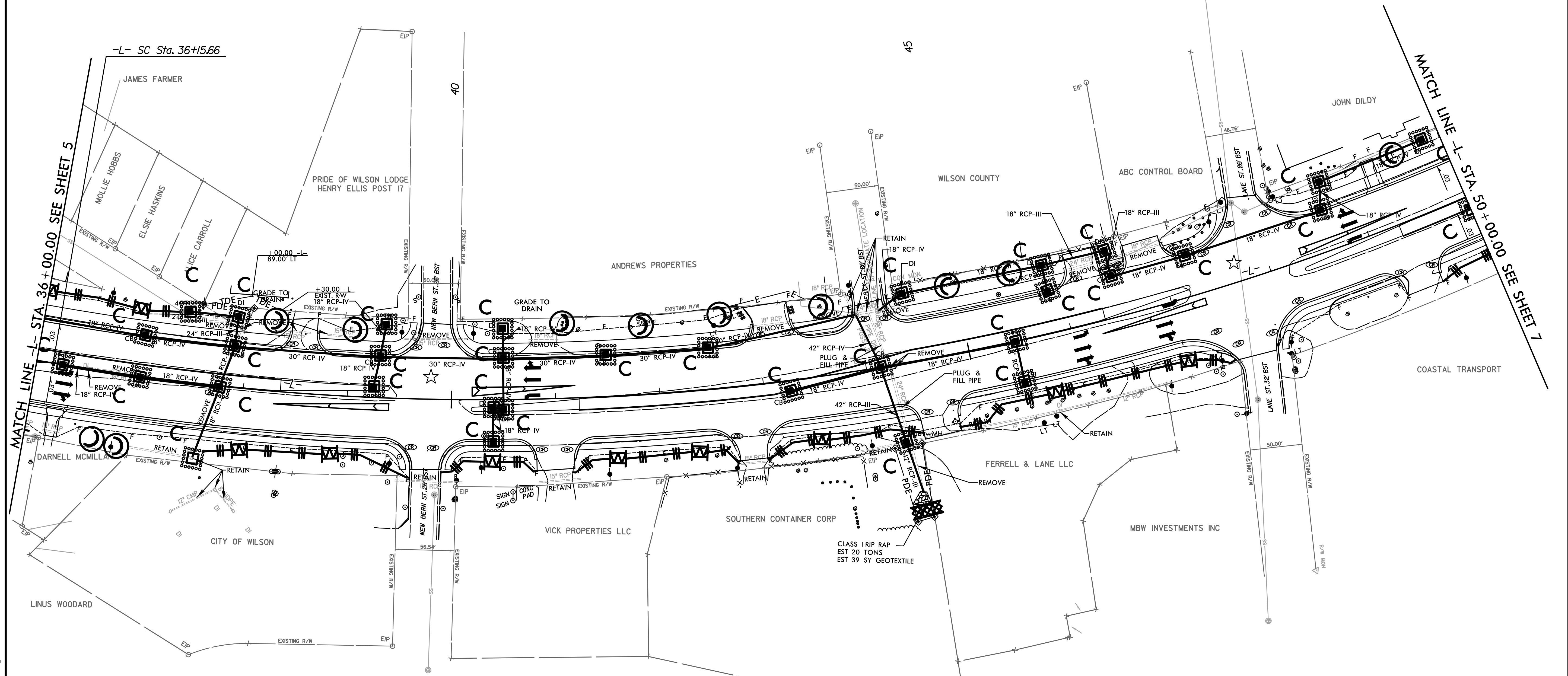
PROJECT REFERENCE NO.	SHEET NO.
U-5935	EC-17/CONST.06
RW SHEET NO.	
ROADWAY DESIGN ENGINEER	HYDRAULICS ENGINEER

**DOCUMENT NOT CONSIDERED FINAL
UNLESS ALL SIGNATURES COMPLETED**

Michael Baker Engineering, Inc.
10000 Highway 100
Suite 800
Cary, NC 27518
Phone: 919.557.2518
Fax: 919.557.4929
NC License: P-1144
ECOLOGICAL ENGINEERING
1101 SE Clay Parkway
Suite 110
Cary, NC 27518
Phone: 919.557.4929
NC License: P-1084

-L-		
Pls Sta 35+66.66	Pls Sta 44+91.24	Pls Sta 53+43.81
$\Theta_s = 1'45''16.9''$	$\Delta = 40'05''11.7''$ (LT)	$\Theta_s = 1'45''16.9''$
$L_s = 147.00'$	$D = 2'23''14.4''$	$L_s = 147.00'$
$LT = 98.00'$	$L = 1,679.14'$	$LT = 98.00'$
$ST = 49.00'$	$T = 875.58'$	$ST = 49.00'$
	$R = 2,400.00'$	
	$D_s = 50$ MPH	
	$SE = 0.04$	
	$RUNOFF = 147.00'$	

NOTES: ALTERNATIVE INLET PROTECTION DEVICES
ARE ALLOWED PER DIRECTION OF THE
ENGINEER.



☆ = REVISED SIGNAL

FOR -L- PROFILE SEE SHEETS 16 & 17

5/14/99
3:20:05 PM
\\enviro\p\m\p\U-5935_REU_PSH_06_FINAL.dgn