

8/17/99

PROJECT REFERENCE NO.	SHEET NO.
U-5935	EC-14/CONST.14
RW SHEET NO.	
ROADWAY DESIGN ENGINEER	HYDRAULICS ENGINEER

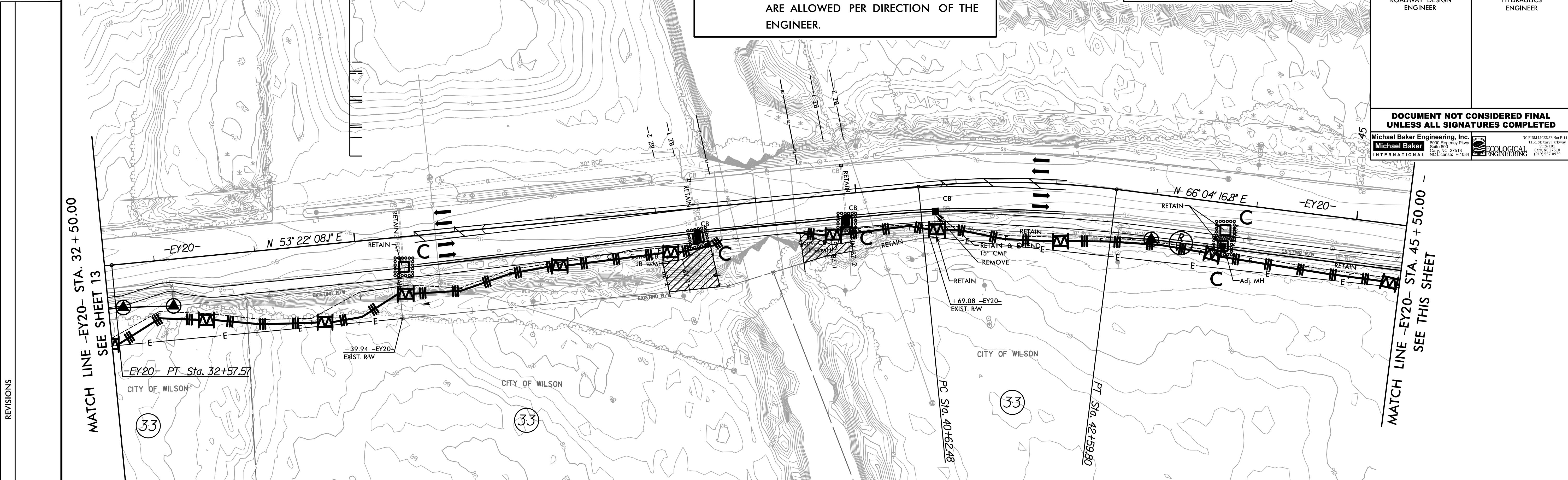
**DOCUMENT NOT CONSIDERED FINAL  
UNLESS ALL SIGNATURES COMPLETED**

Michael Baker Engineering, Inc.  
 6500 Progress Plaza  
 Suite 602 27518  
 Cary, NC 27518  
 NC License: P-1084

ECOLOGICAL ENGINEERING  
 1101 S. Cary Parkway  
 Suite 101  
 Cary, NC 27518  
 (919) 557-0929

NOTES: ALTERNATIVE INLET PROTECTION DEVICES  
ARE ALLOWED PER DIRECTION OF THE  
ENGINEER.

CLEARING AND GRUBBING  
EROSION CONTROL FOR  
CONSTRUCTION SHEET 14



REVISIONS

MATCH LINE -EY20- STA. 32+50.00  
SEE SHEET 13

MATCH LINE -EY20- STA. 45+50.00 -  
SEE THIS SHEET


MATCH LINE -EY20- STA. 45+50.00 -  
SEE THIS SHEET

-EY20-  
 $PI\ Sta\ 52+82.18$   
 $\Delta = 10^{\circ}00'00.0''\ (RT)$   
 $D = 2^{\circ}09'26.5''$   
 $L = 463.53'$   
 $T = 232.36'$   
 $R = 2,655.84'$

-EY20-  
 $PI\ Sta\ 58+77.99$   
 $\Delta = 20^{\circ}06'31.9''\ (RT)$   
 $D = 2^{\circ}47'09.7''$   
 $L = 721.77'$   
 $T = 364.64'$   
 $R = 2,056.53'$

 ENVIRONMENTALLY SENSITIVE AREA  
SEE PROJECT SPECIAL PROVISIONS

END CONSTRUCTION  
-EY20- POC Sta. 57+08.48

 = REVISED SIGNAL

3:19:55 PM  
 R:\Environmental\Design\U-5935\_REU\_PSH\_14.dgn  
 Brandon