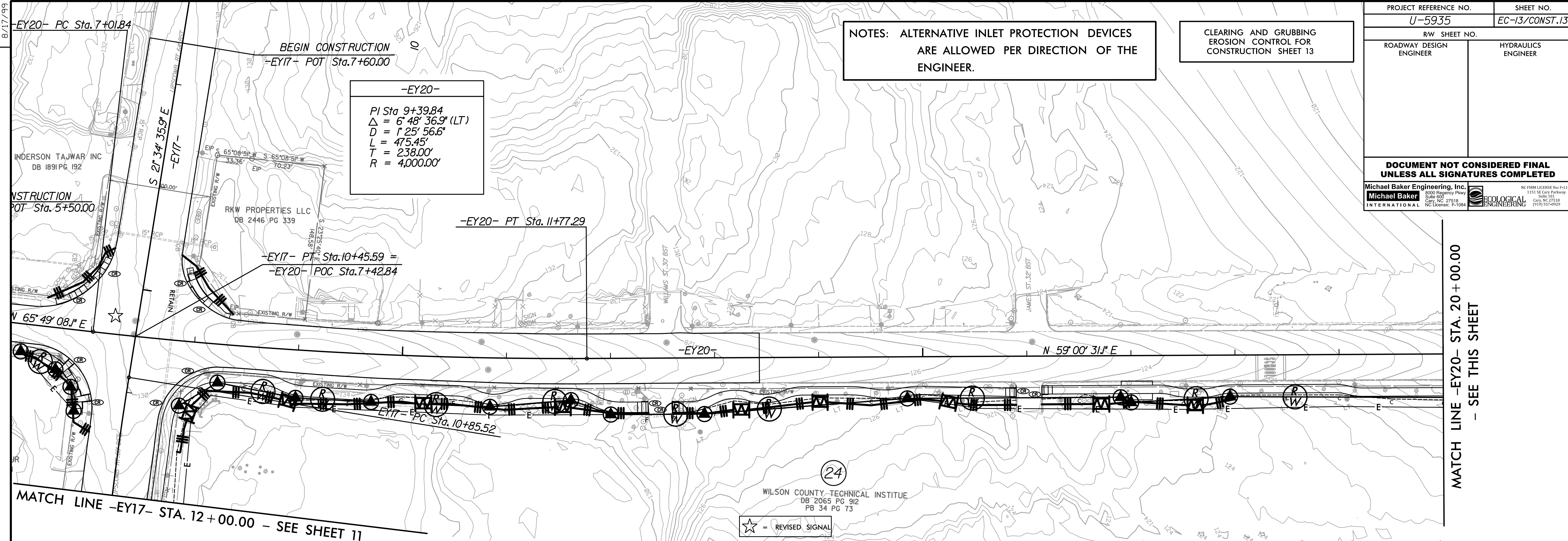


PROJECT REFERENCE NO. U-5935	SHEET NO. EC-13/CONST.13
R/W SHEET NO.	HYDRAULICS ENGINEER
ROADWAY DESIGN ENGINEER	
<b>DOCUMENT NOT CONSIDERED FINAL UNLESS ALL SIGNATURES COMPLETED</b>	
Michael Baker Engineering, Inc. 1501 S. Salisbury Blvd. Raleigh, NC 27615 Tel: 919.876.1000 Fax: 919.876.1001	ECOLOGICAL ENGINEERING 1101 S. Salisbury Blvd. Raleigh, NC 27615 Tel: 919.876.1000 Fax: 919.876.1001

NOTES: ALTERNATIVE INLET PROTECTION DEVICES ARE ALLOWED PER DIRECTION OF THE ENGINEER.

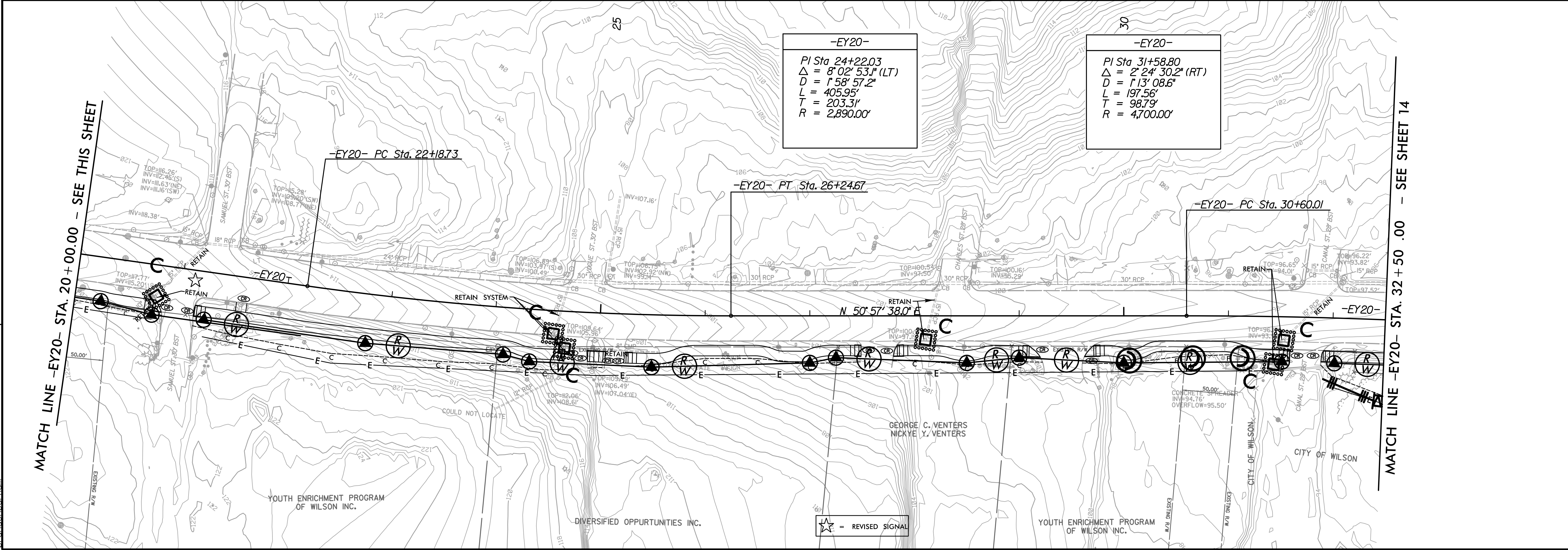
CLEARING AND GRUBBING EROSION CONTROL FOR CONSTRUCTION SHEET 13



MATCH LINE -EY20- STA. 20 + 00.00 - SEE THIS SHEET

REVISIONS

MATCH LINE -EY17- STA. 12 + 00.00 - SEE SHEET 11



MATCH LINE -EY20- STA. 20 + 00.00 - SEE THIS SHEET

MATCH LINE -EY20- STA. 32 + 50 .00 - SEE SHEET 14

3:19:52 PM  
R:\Environmental\Design\U-5935\_REU\_PSH.13.dgn  
mrandolph