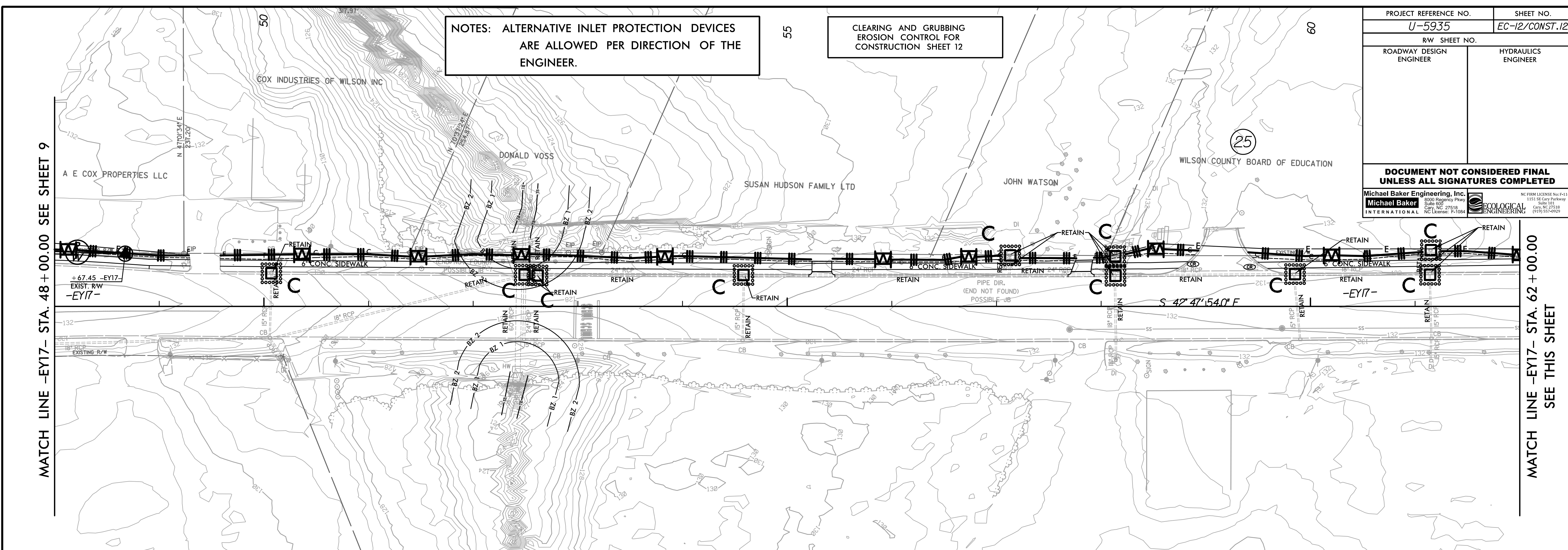


8/17/99

PROJECT REFERENCE NO.		SHEET NO.	
U-5935		EC-12/CONST.12	
RW SHEET NO.			
ROADWAY DESIGN ENGINEER		HYDRAULICS ENGINEER	
DOCUMENT NOT CONSIDERED FINAL UNLESS ALL SIGNATURES COMPLETED			
Michael Baker Engineering, Inc. 1315 S. Carver Parkway Cary, NC 27518 NC License: 7-1084		ECOLOGICAL ENGINEERING 1101 S. Carver Parkway Cary, NC 27518 (919) 557-9221	

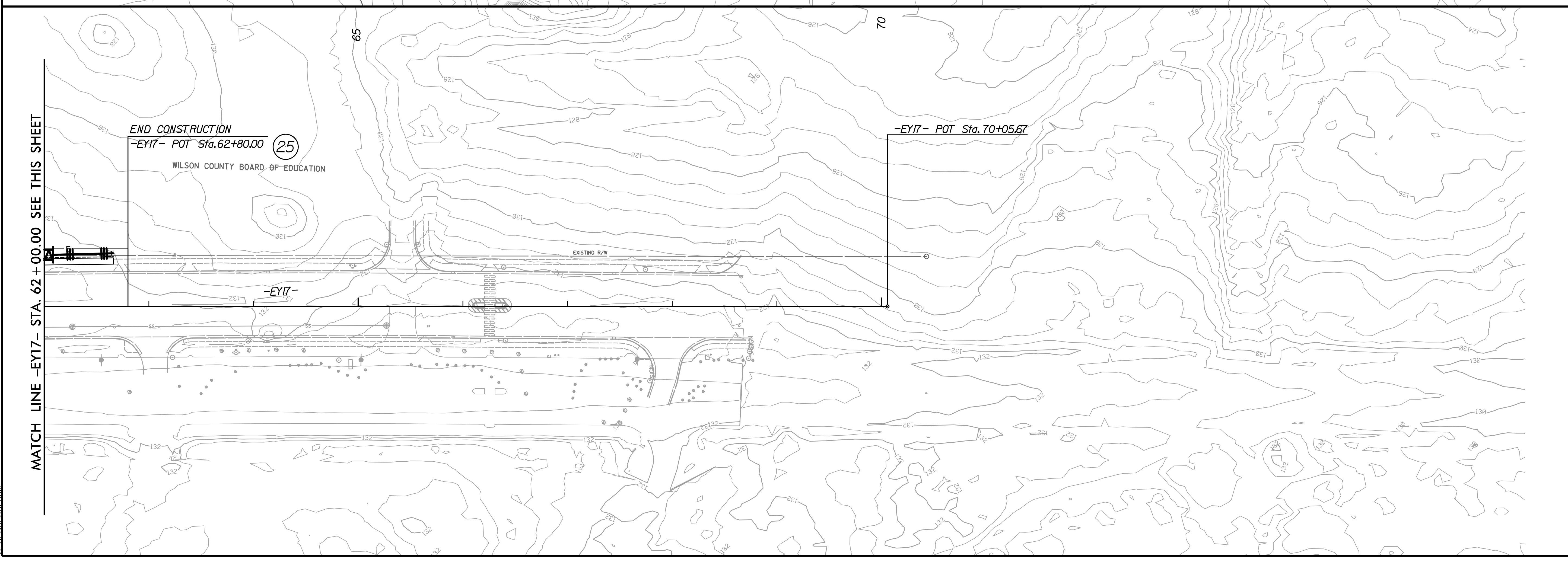
NOTES: ALTERNATIVE INLET PROTECTION DEVICES ARE ALLOWED PER DIRECTION OF THE ENGINEER.

CLEARING AND GRUBBING EROSION CONTROL FOR CONSTRUCTION SHEET 12



MATCH LINE -EY17- STA. 48 + 00.00 SEE SHEET 9

MATCH LINE -EY17- STA. 62 + 00.00 SEE THIS SHEET



MATCH LINE -EY17- STA. 62 + 00.00 SEE THIS SHEET

END CONSTRUCTION
-EY17- POT Sta. 62+80.00

-EY17- POT Sta. 70+05.67

3:19:49 PM
R:\Environmental\Design\U-5935_REU_PSH_12.dgn
Brandon