

8/17/99

-EY17-

PI Sta 13+85.55
 $\Delta = 11' 27' 37.3" (LT)$
 $D = 1' 54' 58.5"$
 $L = 598.06'$
 $T = 300.03'$
 $R = 2,990.00'$

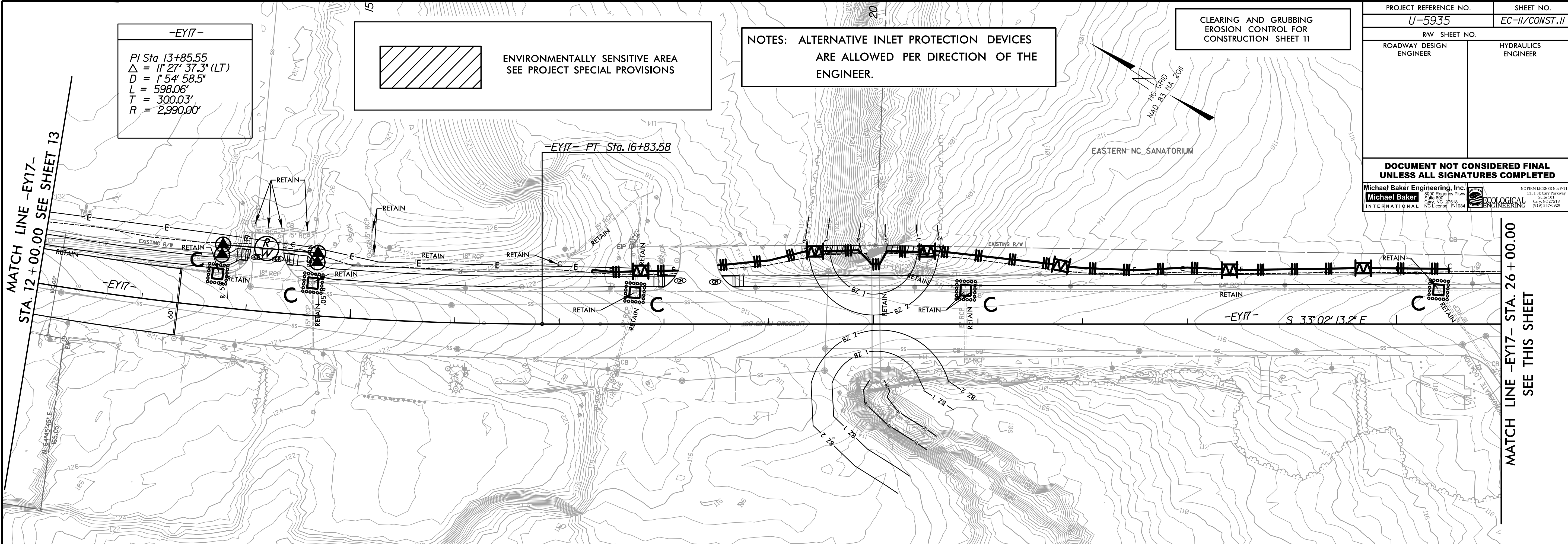
 ENVIRONMENTALLY SENSITIVE AREA
 SEE PROJECT SPECIAL PROVISIONS

NOTES: ALTERNATIVE INLET PROTECTION DEVICES
 ARE ALLOWED PER DIRECTION OF THE
 ENGINEER.

CLEARING AND GRUBBING
 EROSION CONTROL FOR
 CONSTRUCTION SHEET 11

PROJECT REFERENCE NO. U-5935	SHEET NO. EC-II/CONST.11
ROADWAY DESIGN ENGINEER	HYDRAULICS ENGINEER
DOCUMENT NOT CONSIDERED FINAL UNLESS ALL SIGNATURES COMPLETED	
Michael Baker Engineering, Inc. Michael Baker International	ECOLOGICAL ENGINEERING

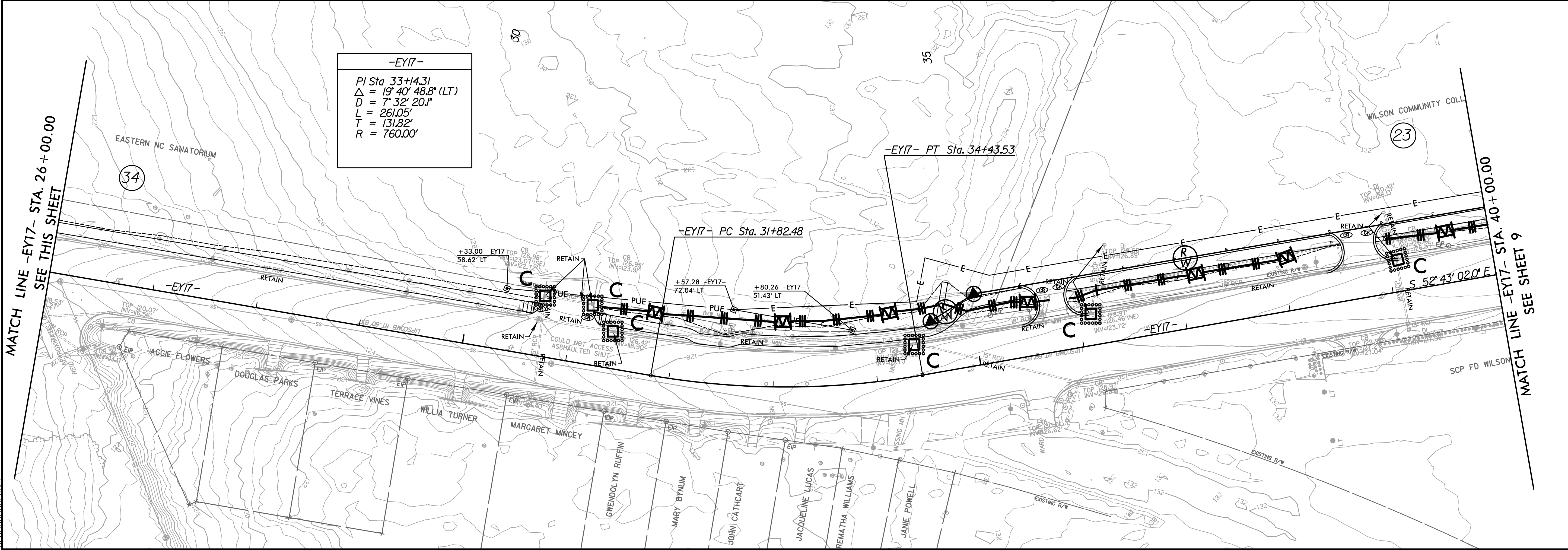
MATCH LINE -EY17-
 STA. 12 + 00.00 SEE SHEET 13



MATCH LINE -EY17- STA. 26 + 00.00
 SEE THIS SHEET

-EY17-

PI Sta 33+44.31
 $\Delta = 19' 40' 48.8" (LT)$
 $D = 7' 32' 20.1"$
 $L = 261.05'$
 $T = 131.82'$
 $R = 760.00'$



MATCH LINE -EY17- STA. 26 + 00.00
 SEE THIS SHEET

MATCH LINE -EY17- STA. 40 + 00.00
 SEE SHEET 9

3:19:45 PM
 R:\Environmental\Design\U-5935_REU_PSH_11.dgn
 Brandon