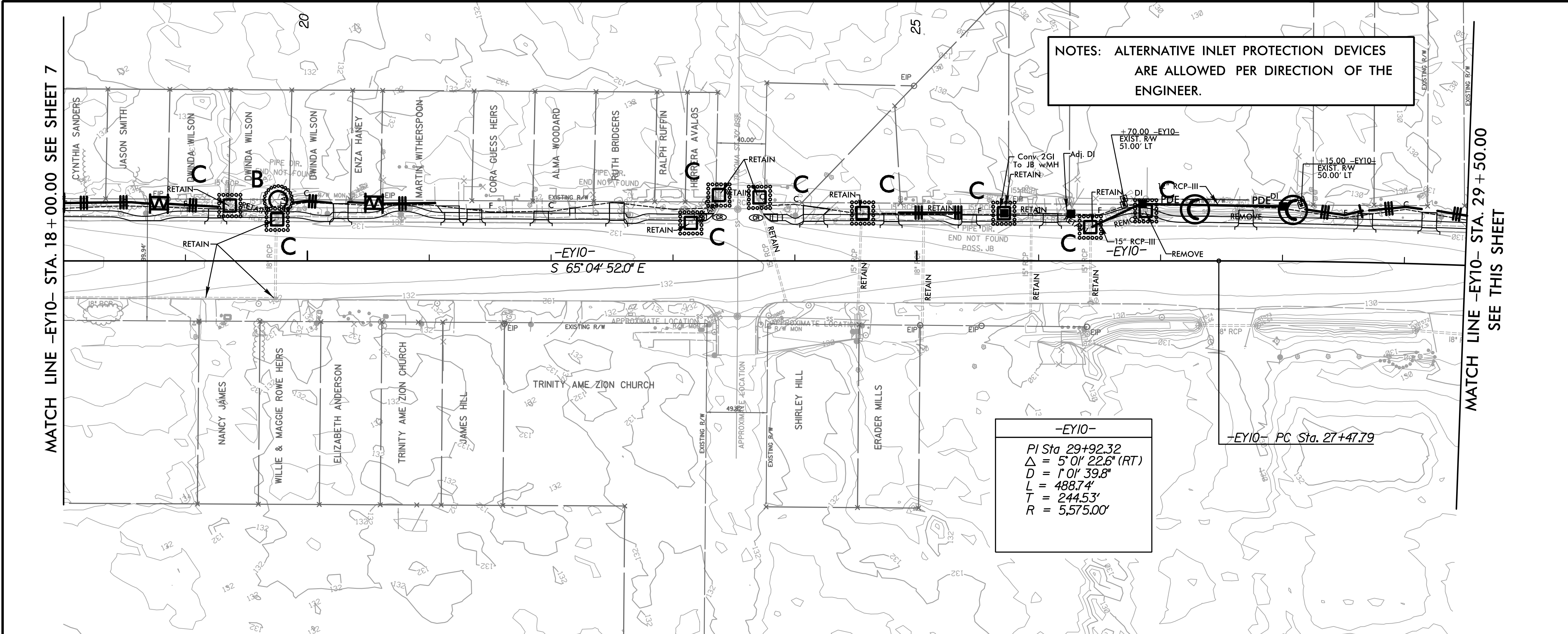


PROJECT REFERENCE NO.		SHEET NO.	
U-5935		EC-10/CONST.10	
RW SHEET NO.			
ROADWAY DESIGN ENGINEER		HYDRAULICS ENGINEER	
<b>DOCUMENT NOT CONSIDERED FINAL UNLESS ALL SIGNATURES COMPLETED</b>			
Michael Baker Engineering, Inc. Michael Baker International		ECOLOGICAL ENGINEERING	

MATCH LINE -EY10- STA. 18 + 00.00 SEE SHEET 7



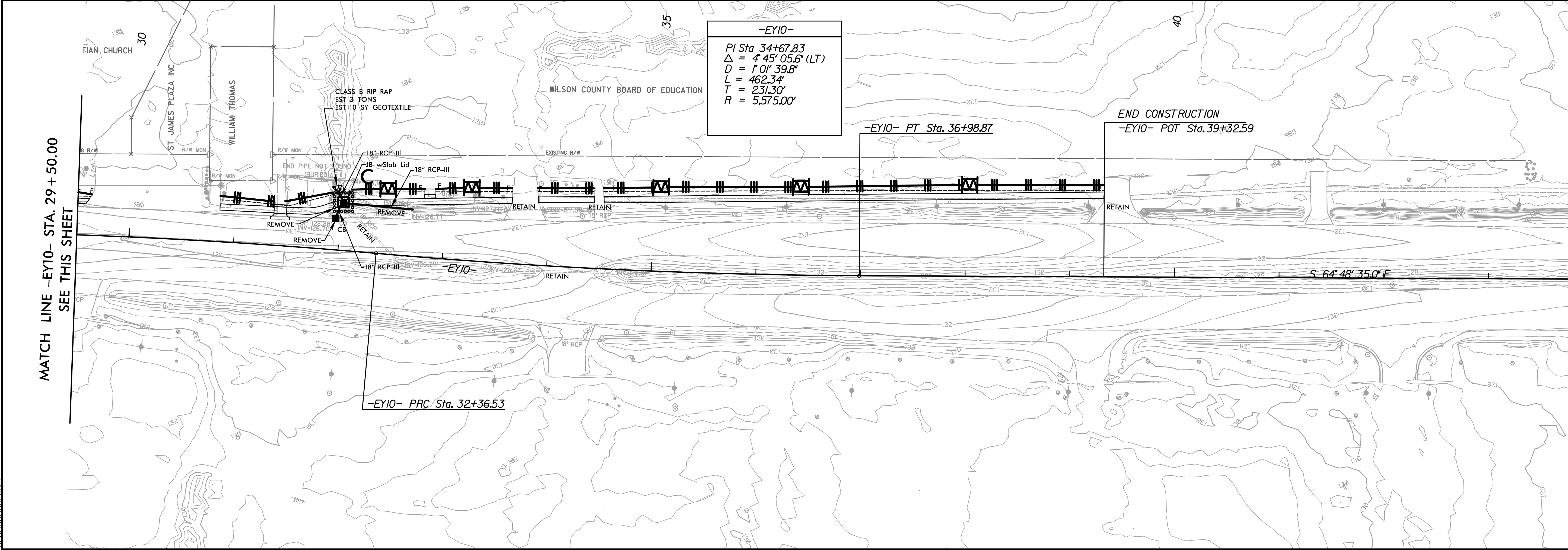
NOTES: ALTERNATIVE INLET PROTECTION DEVICES  
ARE ALLOWED PER DIRECTION OF THE  
ENGINEER.

-EY10-  
 PI Sta 29+92.32  
 $\Delta = 5' 01'' 22.6''$  (RT)  
 $D = 1' 01'' 39.8''$   
 $L = 488.74'$   
 $T = 244.53'$   
 $R = 5,575.00'$

-EY10- PC Sta. 27+47.79

MATCH LINE -EY10- STA. 29 + 50.00  
SEE THIS SHEET

MATCH LINE -EY10- STA. 29 + 50.00  
SEE THIS SHEET



-EY10-  
 PI Sta 34+67.83  
 $\Delta = 4' 45'' 05.6''$  (LT)  
 $D = 1' 01'' 39.8''$   
 $L = 462.34'$   
 $T = 231.30'$   
 $R = 5,575.00'$

-EY10- PT Sta. 36+98.87

END CONSTRUCTION  
-EY10- POT Sta. 39+32.59

S 64° 48' 35.0" E

-EY10- PRC Sta. 32+36.53