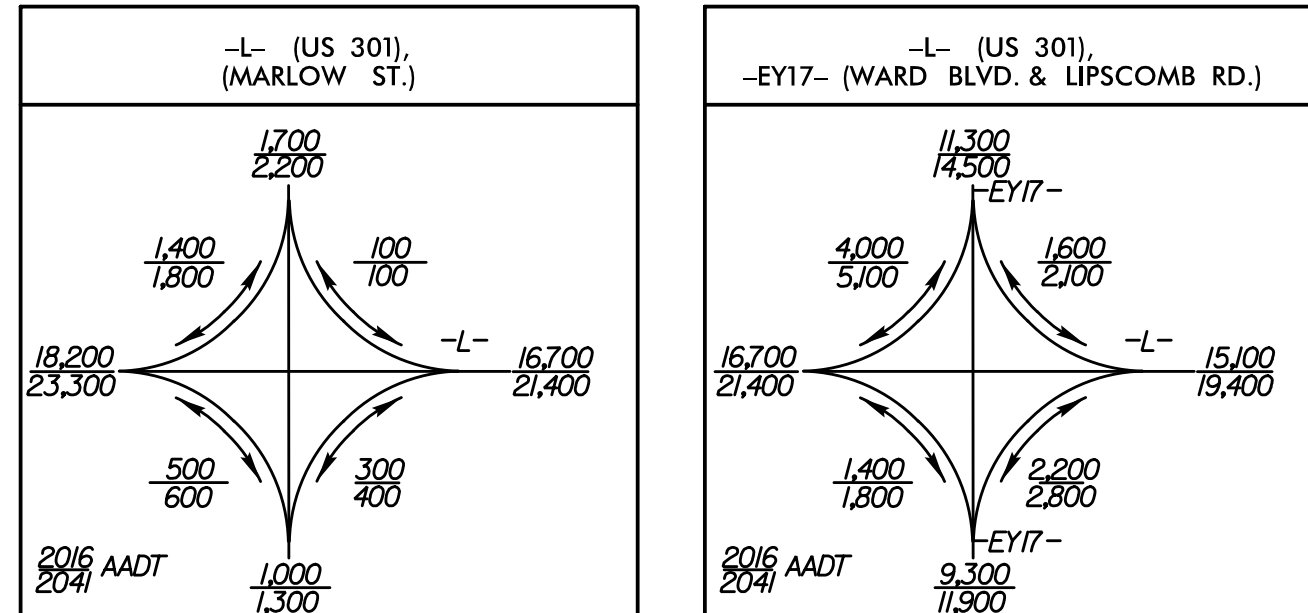


5/14/99
 3:53:38 PM Design\U-5935_REU_PSH_09.dgn
 R:\Environ\3:53:38 PM Design\U-5935_REU_PSH_09.dgn
 R:\Environ\3:53:38 PM Design\U-5935_REU_PSH_09.dgn



CLEARING AND GRUBBING
 EROSION CONTROL FOR
 CONSTRUCTION SHEET 09

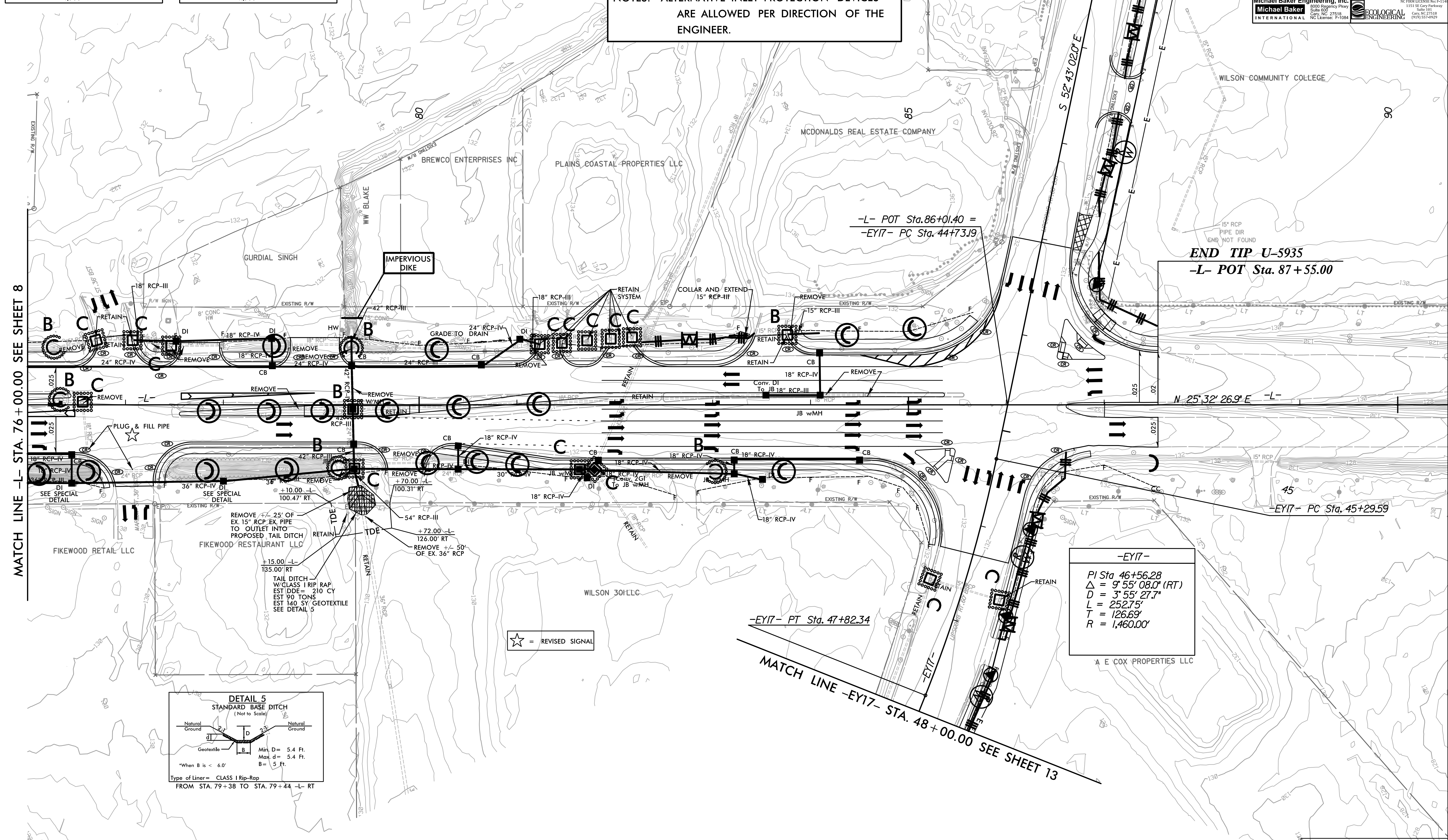
PROJECT REFERENCE NO. U-5935	SHEET NO. EC-09/CONST. 09
R/W SHEET NO.	HYDRAULICS ENGINEER
ROADWAY DESIGN ENGINEER	ENGINEER

**DOCUMENT NOT CONSIDERED FINAL
 UNLESS ALL SIGNATURES COMPLETED**

Michael Baker Engineering, Inc.
 8000 Highway 100
 Suite 800
 Cary, NC 27518
 Phone: 919.273.1188
 Fax: 919.273.1189
 NC License: F-1084

ECOLOGICAL ENGINEERING
 1153 SE Glenview Parkway
 Suite 110
 Cary, NC 27518
 Phone: 919.557-9929
 NC License: F-1144

NOTES: ALTERNATIVE INLET PROTECTION DEVICES
 ARE ALLOWED PER DIRECTION OF THE
 ENGINEER.



MATCH LINE -L- STA. 76+00.00 SEE SHEET 8

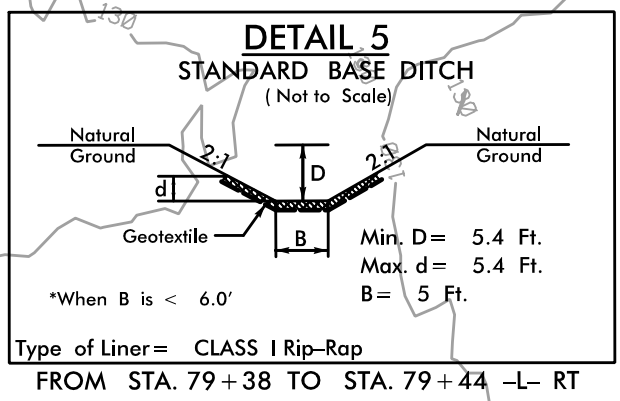
MATCH LINE -EY17- STA. 40+00.00 SEE SHEET 11

MATCH LINE -EY17- STA. 48+00.00 SEE SHEET 13

-L- POT Sta. 86+01.40 =
 -EY17- PC Sta. 44+73.19

END TIP U-5935
 -L- POT Sta. 87+55.00

-EY17-
 PI Sta 46+56.28
 $\Delta = 9^{\circ} 55' 08.0''$ (RT)
 $D = 3^{\circ} 55' 27.7''$
 $L = 252.75'$
 $T = 126.69'$
 $R = 1,460.00'$



☆ = REVISED SIGNAL

FOR -L- PROFILE SEE SHEET 20