

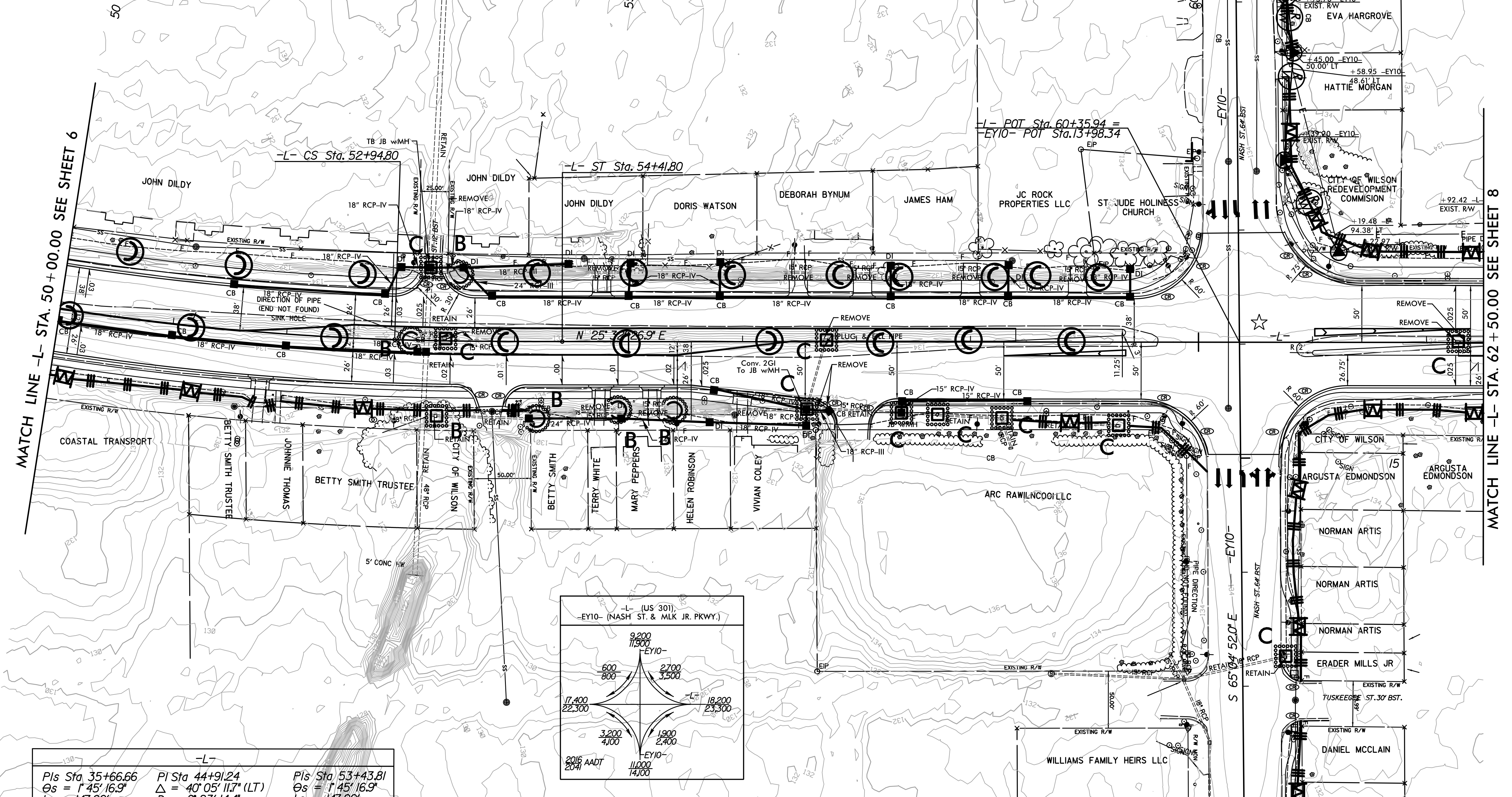
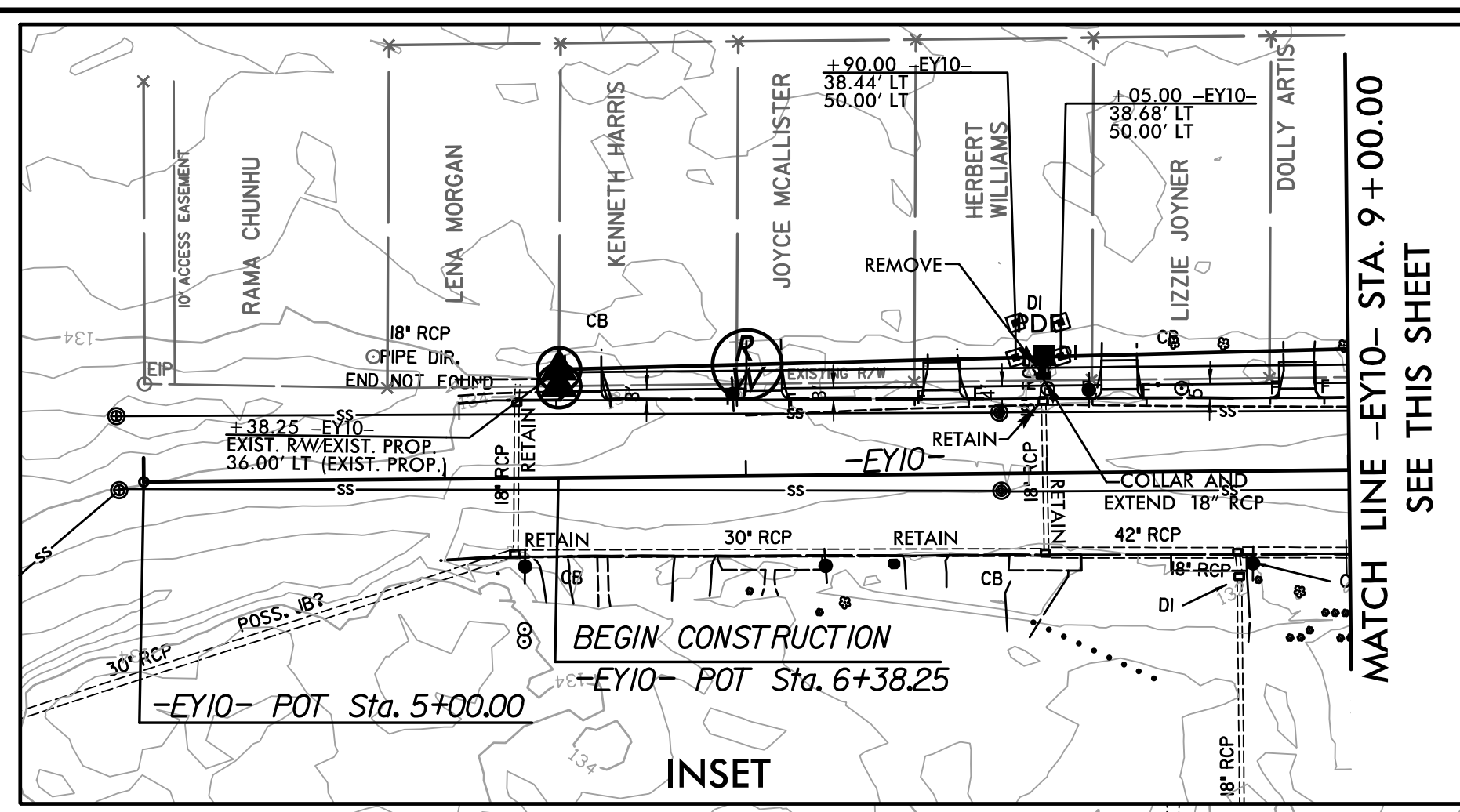
8/17/99
 R:\Environment\Design\U-5935_REU_PSH_07.dgn
 3:09:31 PM Design\U-5935_REU_PSH_07.dgn
 p...

PROJECT REFERENCE NO. U-5935		SHEET NO. EC-07/CONST.07	
RW SHEET NO.		HYDRAULICS ENGINEER	
ROADWAY DESIGN ENGINEER		HYDRAULICS ENGINEER	
DOCUMENT NOT CONSIDERED FINAL UNLESS ALL SIGNATURES COMPLETED			
Michael Baker Engineering, Inc. 8000 Regency Plaza Suite 800 Cary, NC 27518 Phone: 919.241.1000 Fax: 919.241.1001 International NC License: P-1084		ECOLOGICAL ENGINEERING 1103 SE Clay Parkway Suite 110 Cary, NC 27518 Phone: 919.557-4929	

CLEARING AND GRUBBING
EROSION CONTROL FOR
CONSTRUCTION SHEET 7

MATCH LINE -EY10- STA. 9+00.00
SEE INSET "A" THIS SHEET

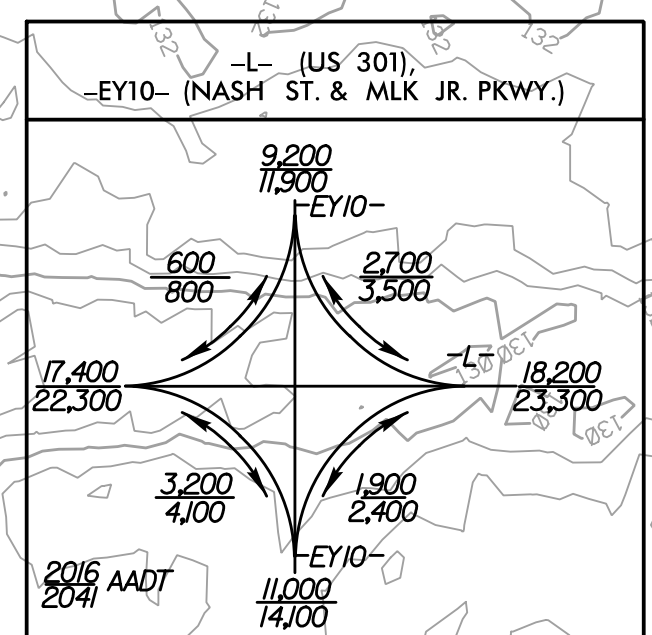
NOTES: ALTERNATIVE INLET PROTECTION DEVICES
ARE ALLOWED PER DIRECTION OF THE
ENGINEER.



MATCH LINE -L- STA. 50+00.00 SEE SHEET 6

MATCH LINE -L- STA. 62+50.00 SEE SHEET 8

Pls Sta 35+66.66 $\Delta s = 1' 45'' 16.9''$ $D = 2' 23'' 14.4''$ $Ls = 147.00'$ $LT = 98.00'$ $ST = 49.00'$	Pls Sta 44+91.24 $\Delta = 40' 05'' 11.7'' (LT)$ $Ls = 147.00'$ $L = 1,679.14'$ $T = 875.58'$ $R = 2,400.00'$ $Ds = 50 \text{ MPH}$ $SE = 0.04$ $RUNOFF = 147.00'$	Pls Sta 53+43.81 $\Delta s = 1' 45'' 16.9''$ $Ls = 147.00'$ $LT = 98.00'$ $ST = 49.00'$
---	--	---



★ = REVISED SIGNAL

MATCH LINE -EY10- STA. 18+00.00 SEE SHEET 10

FOR -L- PROFILE SEE SHEET 18