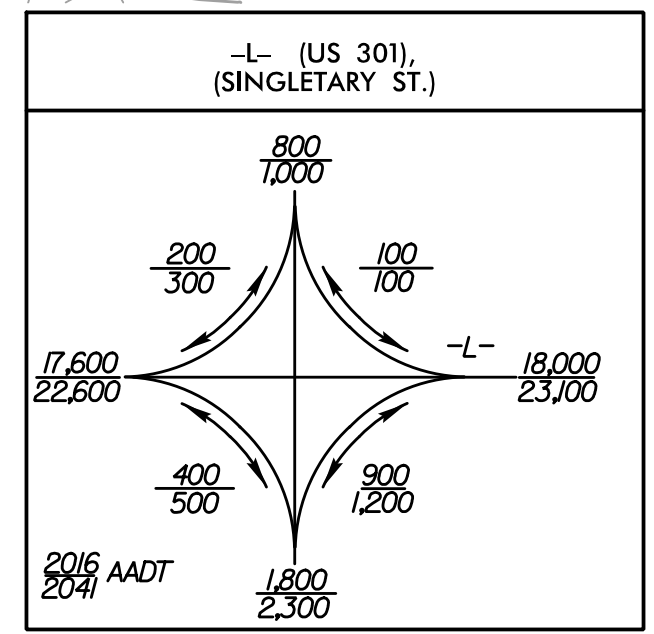
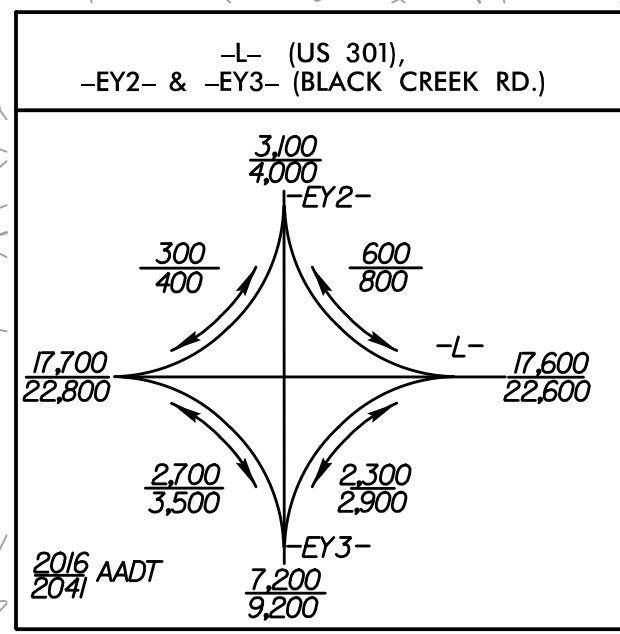


5/14/99



| -L-                       |                               |                           |
|---------------------------|-------------------------------|---------------------------|
| Pls Sta 35+66.66          | Pl Sta 44+91.24               | Pls Sta 53+43.81          |
| $\Theta_s = 1'45''16.9''$ | $\Delta = 40'05''11.7''$ (LT) | $\Theta_s = 1'45''16.9''$ |
| $L_s = 147.00'$           | $D = 2'23''14.4''$            | $L_s = 147.00'$           |
| $LT = 98.00'$             | $L = 1679.14'$                | $LT = 98.00'$             |
| $ST = 49.00'$             | $T = 875.58'$                 | $ST = 49.00'$             |
|                           | $R = 2,400.00'$               |                           |
|                           | $D_s = 50$ MPH                |                           |
|                           | $SE = 0.04$                   |                           |
|                           | $RUNOFF = 147.00'$            |                           |

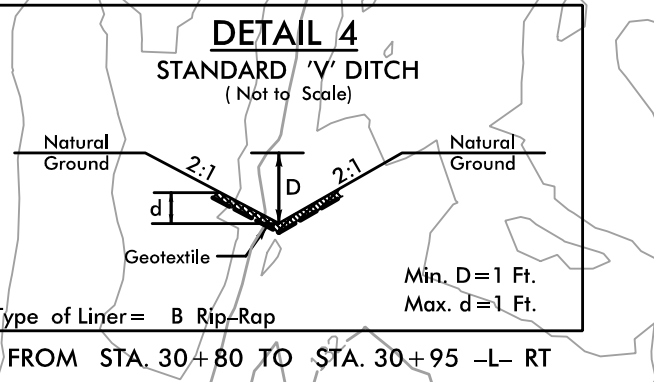
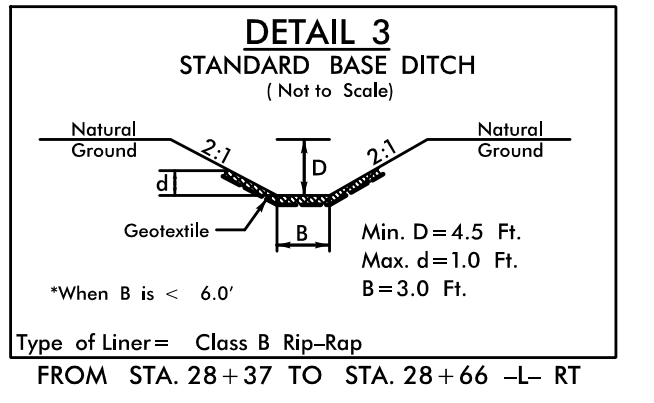
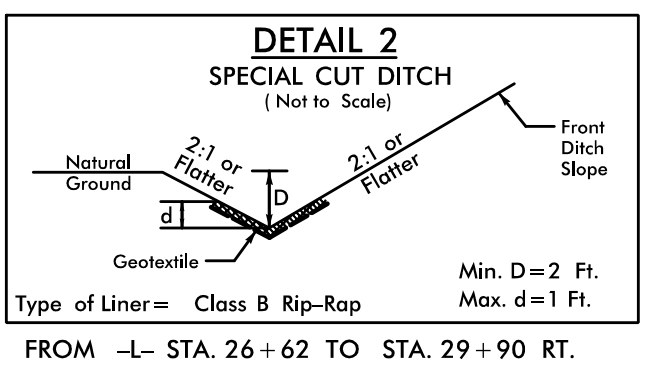
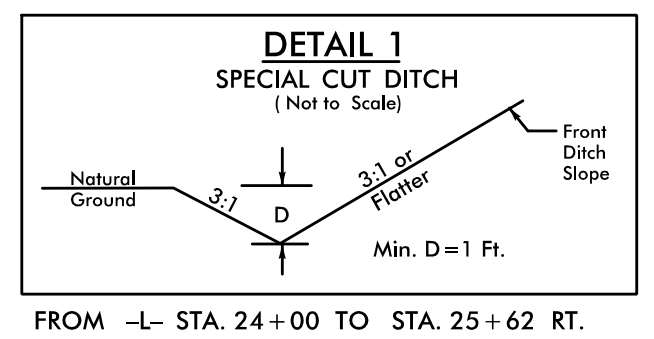
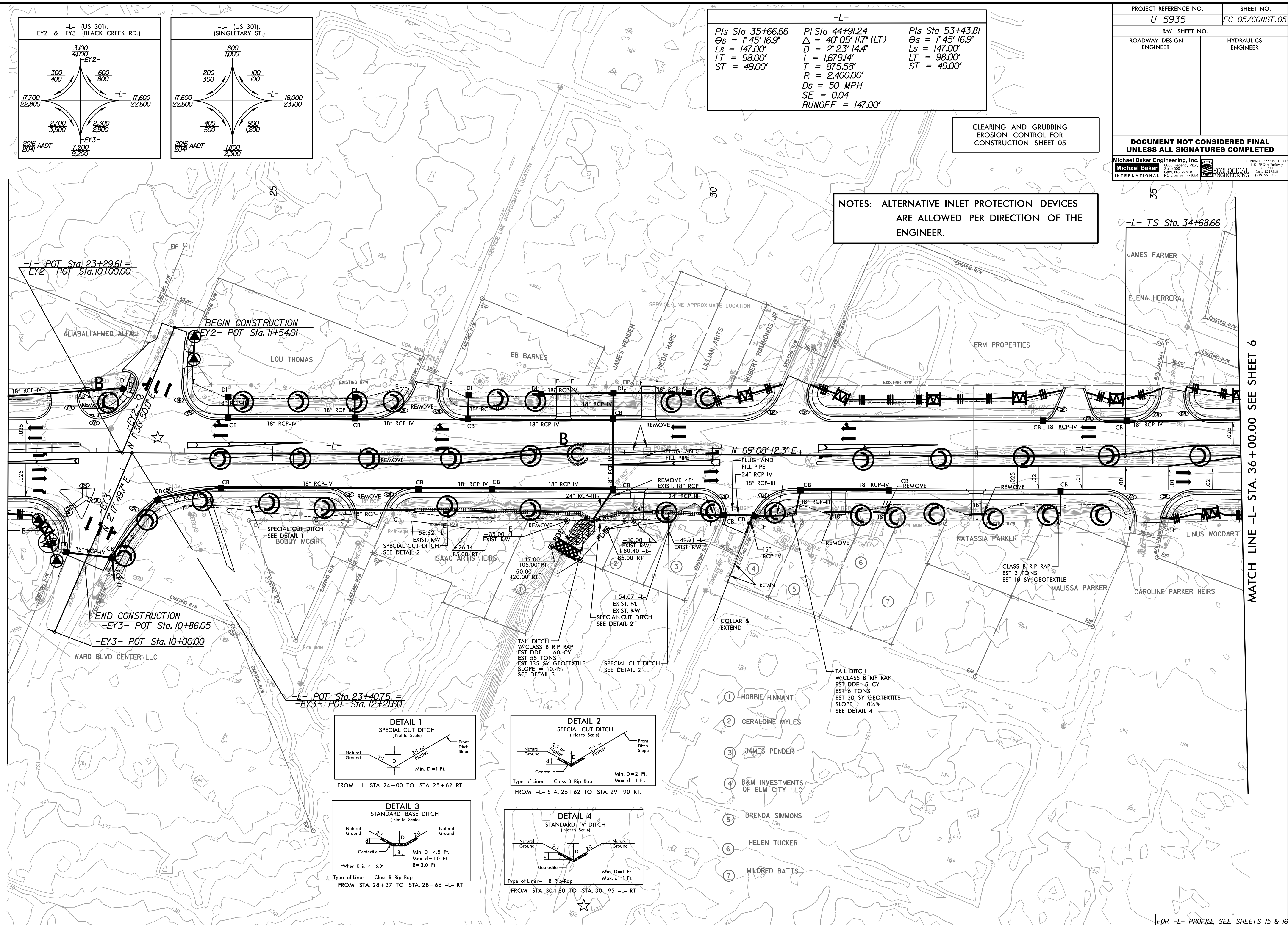
CLEARING AND GRUBBING  
EROSION CONTROL FOR  
CONSTRUCTION SHEET 05

|   |   |
|---|---|
| PROJECT REFERENCE NO.   | SHEET NO.   |
| U-5935  | EC-05/CONST.05  |
| RW SHEET NO.  |   |
| ROADWAY DESIGN ENGINEER   | HYDRAULICS ENGINEER   |
| <b>DOCUMENT NOT CONSIDERED FINAL<br/>UNLESS ALL SIGNATURES COMPLETED</b>  |   |
| Michael Baker Engineering, Inc.<br>1800 Regency Park<br>Suite 100<br>Cary, NC 27518<br>Tel: 919.275.1818<br>Fax: 919.275.1819<br>NC License: P-1084 | ECOLOGICAL ENGINEERING<br>1155 S. Holly Highway<br>Suite 110<br>Cary, NC 27518<br>Tel: 919.557-9929<br>NC License: P-1144 |

NOTES: ALTERNATIVE INLET PROTECTION DEVICES  
ARE ALLOWED PER DIRECTION OF THE  
ENGINEER.

MATCH LINE -L- STA. 22 + 00.00 SEE SHEET 4

MATCH LINE -L- STA. 36 + 00.00 SEE SHEET 6



FOR -L- PROFILE SEE SHEETS 15 & 16

R:\envar\31924\_PV\Design\U-5935\_REU\_PSH\_05.dgn  
3/19/24 PM Design\U-5935\_REU\_PSH\_05.dgn  
production