

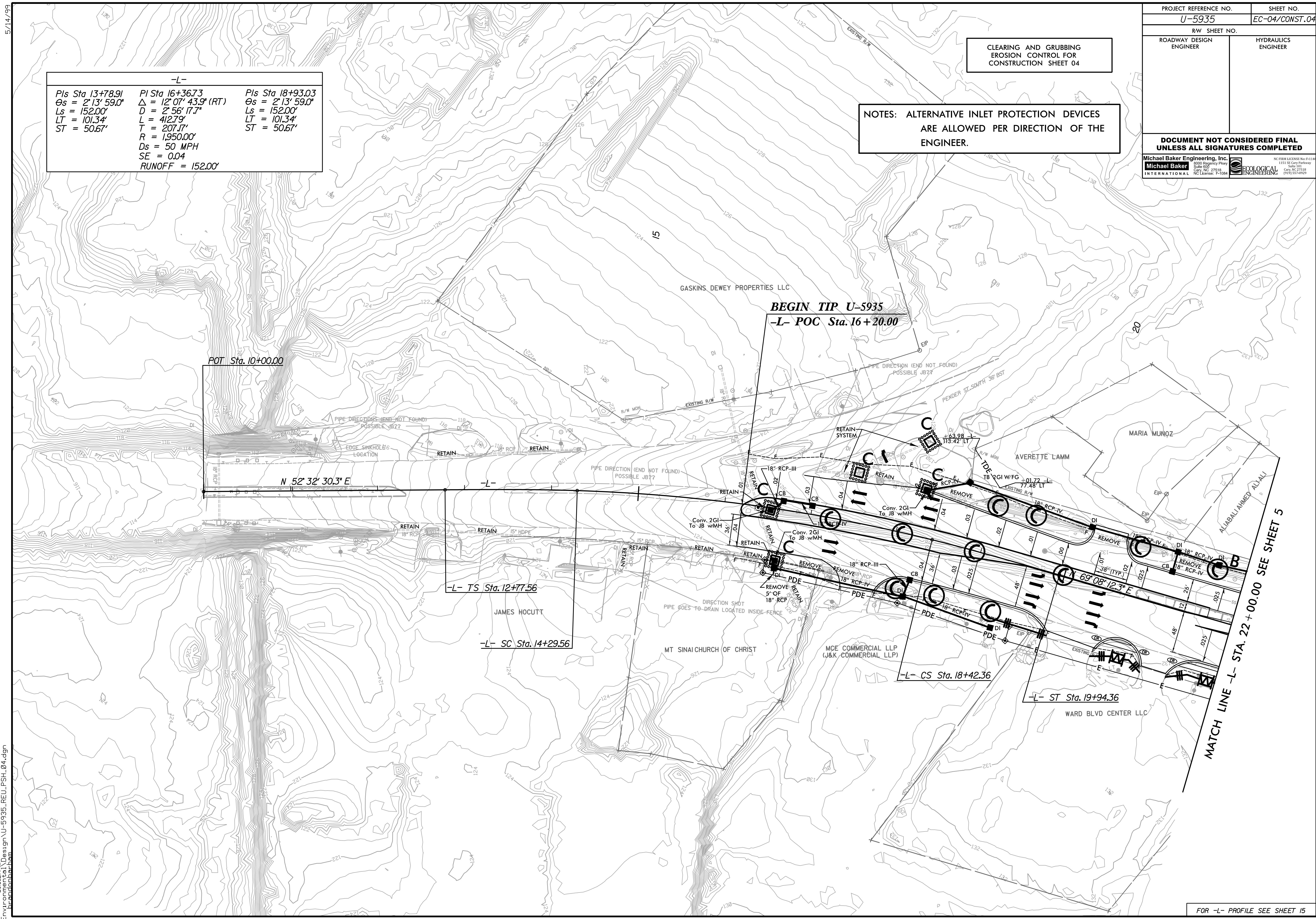
5/14/99

PROJECT REFERENCE NO. U-5935	SHEET NO. EC-04/CONST.04
ROADWAY DESIGN ENGINEER	HYDRAULICS ENGINEER
DOCUMENT NOT CONSIDERED FINAL UNLESS ALL SIGNATURES COMPLETED	
Michael Baker Engineering, Inc. <small>1000 Virginia Ferry Suite 100 Cary, NC 27518 (919) 557-4929</small>	<small>NC FIRM LICENSE No. F-114 1103 SE Clay Parkway Suite 110 Cary, NC 27518 (919) 557-4929</small>

-L-		
PIs Sta 13+78.91	PI Sta 16+36.73	PIs Sta 18+93.03
$\Theta s = 2' 13' 59.0''$	$\Delta = 12' 07' 43.9''$ (RT)	$\Theta s = 2' 13' 59.0''$
$Ls = 152.00'$	$D = 2' 56' 17.7''$	$Ls = 152.00'$
$LT = 101.34'$	$L = 412.79'$	$LT = 101.34'$
$ST = 50.67'$	$T = 207.17'$	$ST = 50.67'$
	$R = 1,950.00'$	
	$Ds = 50$ MPH	
	$SE = 0.04$	
	$RUNOFF = 152.00'$	

CLEARING AND GRUBBING
EROSION CONTROL FOR
CONSTRUCTION SHEET 04

NOTES: ALTERNATIVE INLET PROTECTION DEVICES
ARE ALLOWED PER DIRECTION OF THE
ENGINEER.



MATCH LINE -L- STA. 22 + 00.00 SEE SHEET 5

FOR -L- PROFILE SEE SHEET 15

R:\Environment\Design\U-5935_REU_PSH_04.dgn
 3/19/21 PM
 Michael Baker Engineering