

PROJECT REFERENCE NO. U-5935	SHEET NO. 19
ROADWAY DESIGN ENGINEER SEAL 034367 H. BUCKNER	HYDRAULICS ENGINEER SEAL 039102 BRANDON T. BARRAM
10870118379405 7/11/2017	C7351A57E0F0499 7/11/2017

 BM3 ELEVATION - 134.38
 N 717655 E 2327927
 BL STATION 56+32.00 76 LEFT
 BENCH NAIL IN BASE OF 36" OAK

-LLT-

PI = 67+85.00
 EL = 134.88'
 VC = 150'
 K = 250
 DS = > 50 MPH

PI = 69+75.00
 EL = 135.45'
 VC = 150'
 K = 250
 DS = > 50 MPH

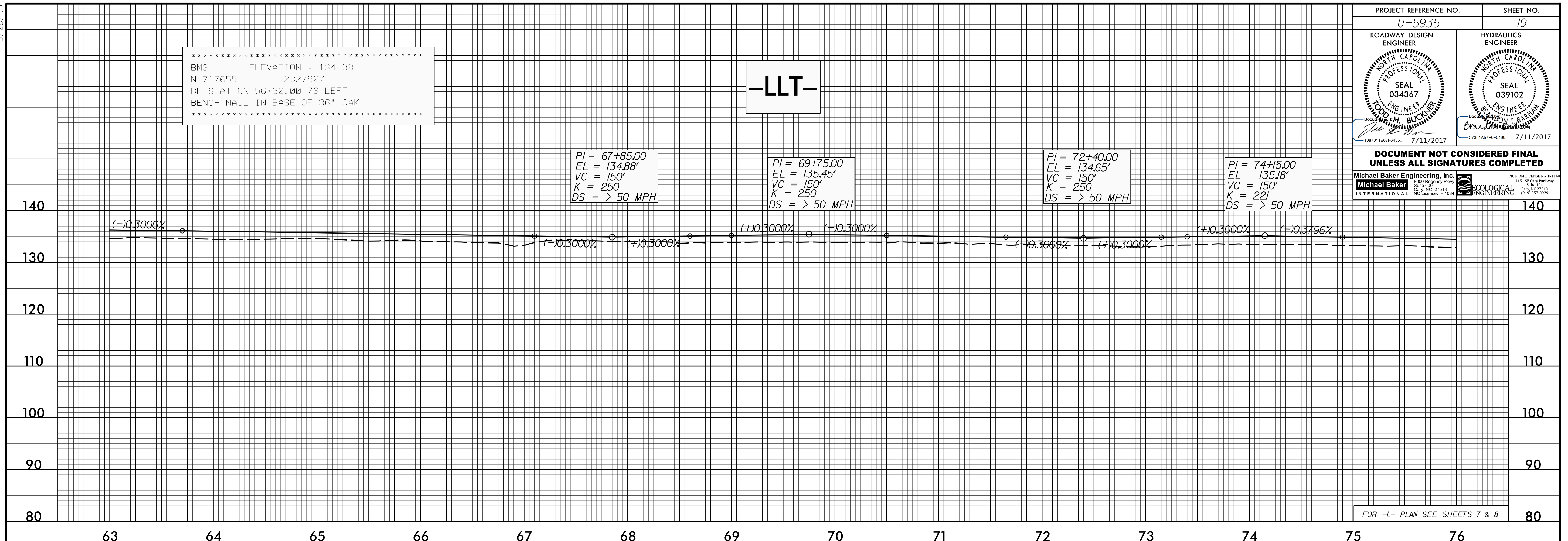
PI = 72+40.00
 EL = 134.65'
 VC = 150'
 K = 250
 DS = > 50 MPH

PI = 74+15.00
 EL = 135.18'
 VC = 150'
 K = 22'
 DS = > 50 MPH

**DOCUMENT NOT CONSIDERED FINAL
 UNLESS ALL SIGNATURES COMPLETED**

Michael Baker Engineering, Inc.
 8000 Regency Park
 Suite 600
 Cary, NC 27518
 NC License: E-10884

5/28/19



FOR -L- PLAN SEE SHEETS 7 & 8

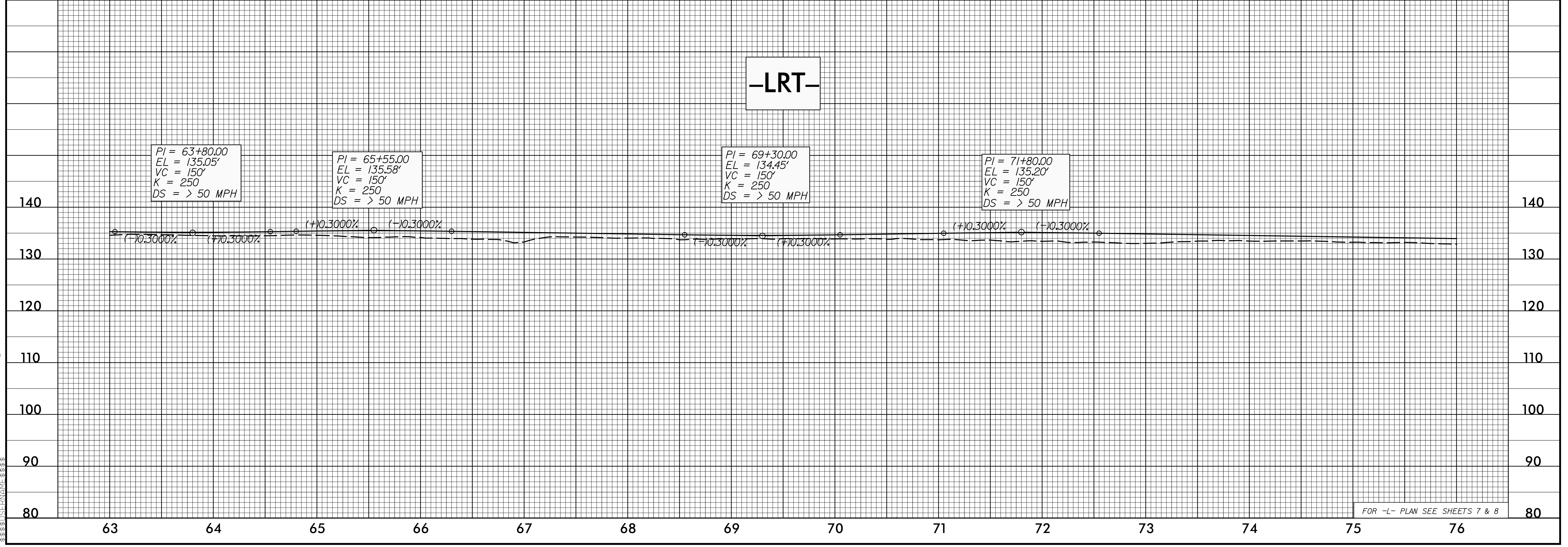
-LRT-

PI = 63+80.00
 EL = 135.05'
 VC = 150'
 K = 250
 DS = > 50 MPH

PI = 65+55.00
 EL = 135.58'
 VC = 150'
 K = 250
 DS = > 50 MPH

PI = 69+30.00
 EL = 134.45'
 VC = 150'
 K = 250
 DS = > 50 MPH

PI = 71+80.00
 EL = 135.20'
 VC = 150'
 K = 250
 DS = > 50 MPH



FOR -L- PLAN SEE SHEETS 7 & 8

H:\JUL-2017\427\U-5935-RDY_PFL_SHTS.dgn
 11:53:56 AM 7/11/2017