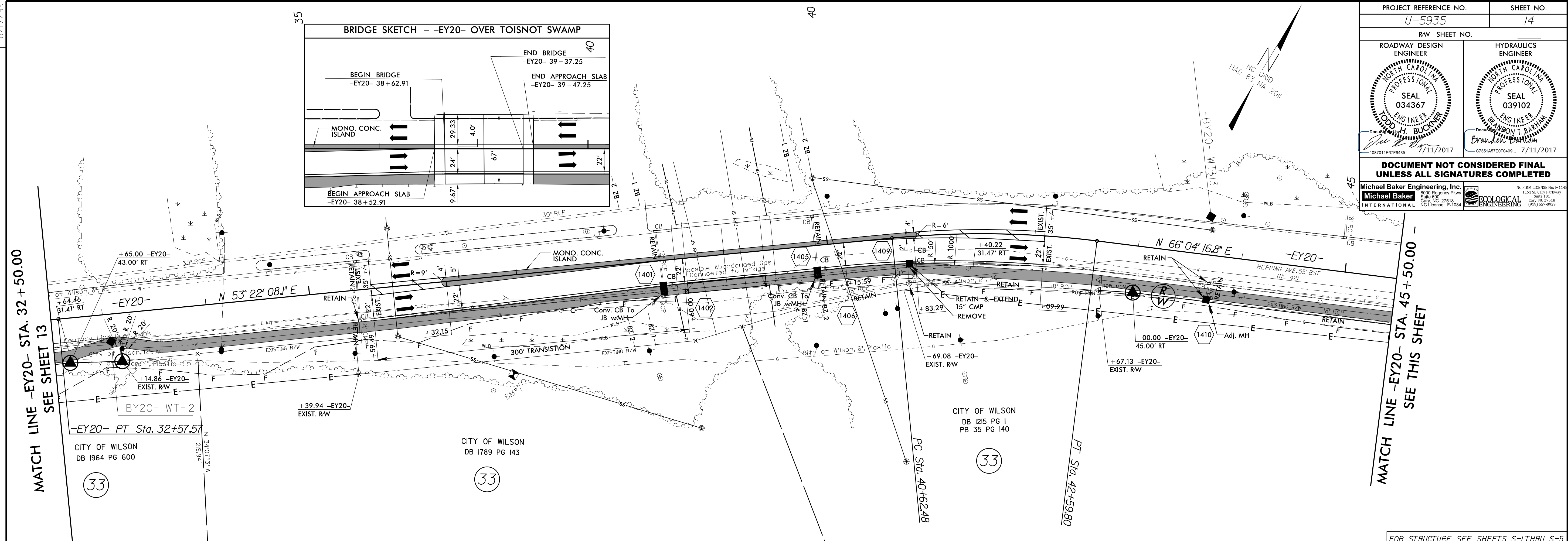
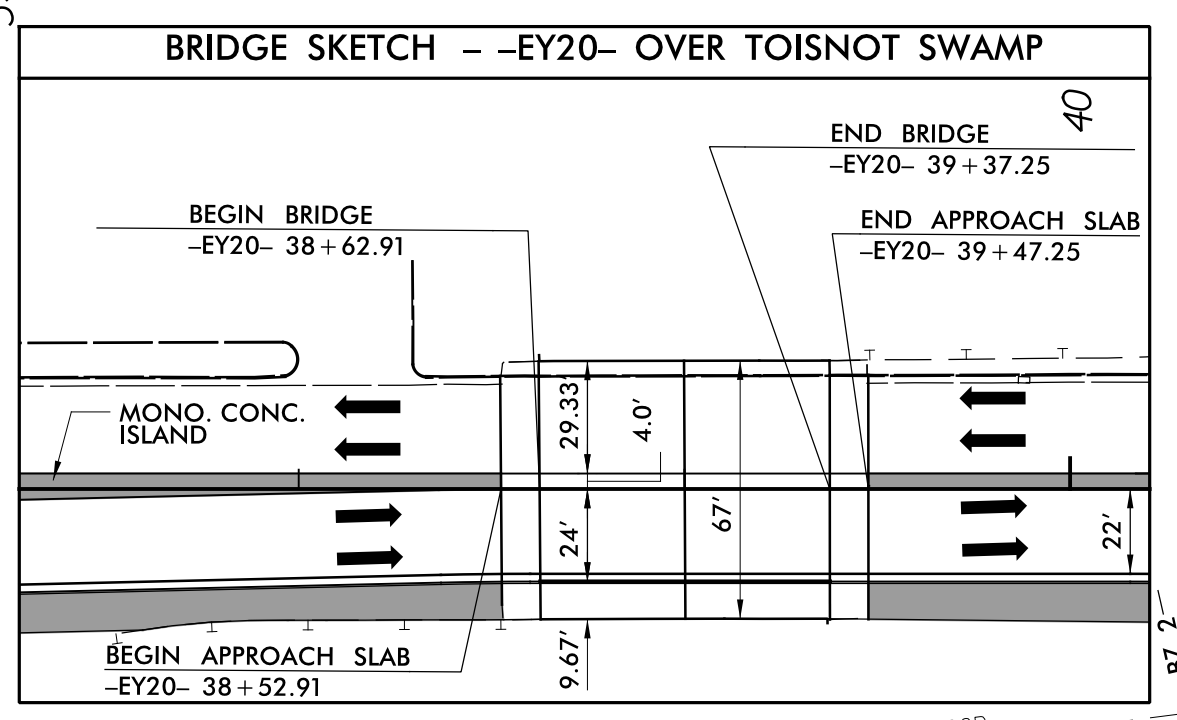
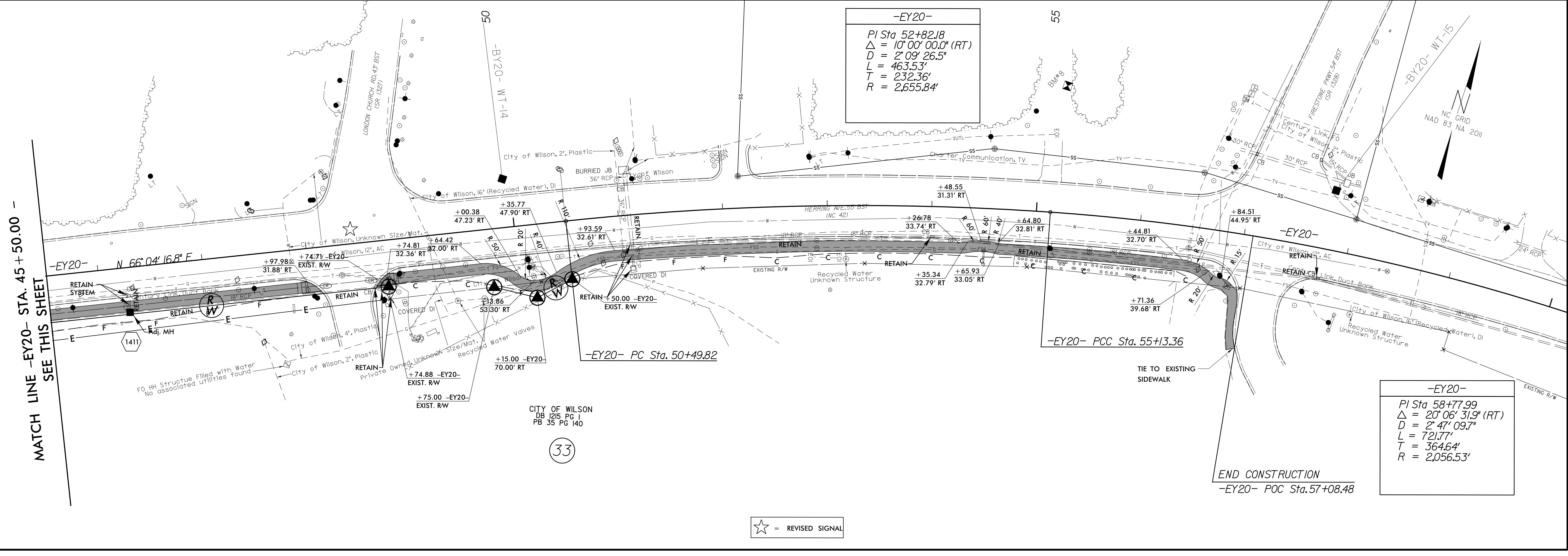


PROJECT REFERENCE NO. U-5935		SHEET NO. 14	
RW SHEET NO.		HYDRAULICS ENGINEER	
ROADWAY DESIGN ENGINEER		HYDRAULICS ENGINEER	
<b>DOCUMENT NOT CONSIDERED FINAL UNLESS ALL SIGNATURES COMPLETED</b>			



MATCH LINE -EY20- STA. 32 + 50.00  
SEE SHEET 13

MATCH LINE -EY20- STA. 45 + 50.00 -  
SEE THIS SHEET



MATCH LINE -EY20- STA. 45 + 50.00 -  
SEE THIS SHEET

END CONSTRUCTION  
-EY20- POC Sta. 57+08.48

-EY20-  
 PI Sta 52+82.18  
 $\Delta = 10' 00' 00.0''$  (RT)  
 $D = 2' 09' 26.5''$   
 $L = 463.53'$   
 $T = 232.36'$   
 $R = 2,655.84'$

-EY20-  
 PI Sta 58+77.99  
 $\Delta = 20' 06' 31.9''$  (RT)  
 $D = 2' 47' 09.7''$   
 $L = 721.77'$   
 $T = 364.64'$   
 $R = 2,056.53'$

☆ = REVISED SIGNAL

REVISIONS

16307 (U)-5935-RDY-SHT\_14.dgn  
9/11/2017 10:07 AM  
33340SERIAL