

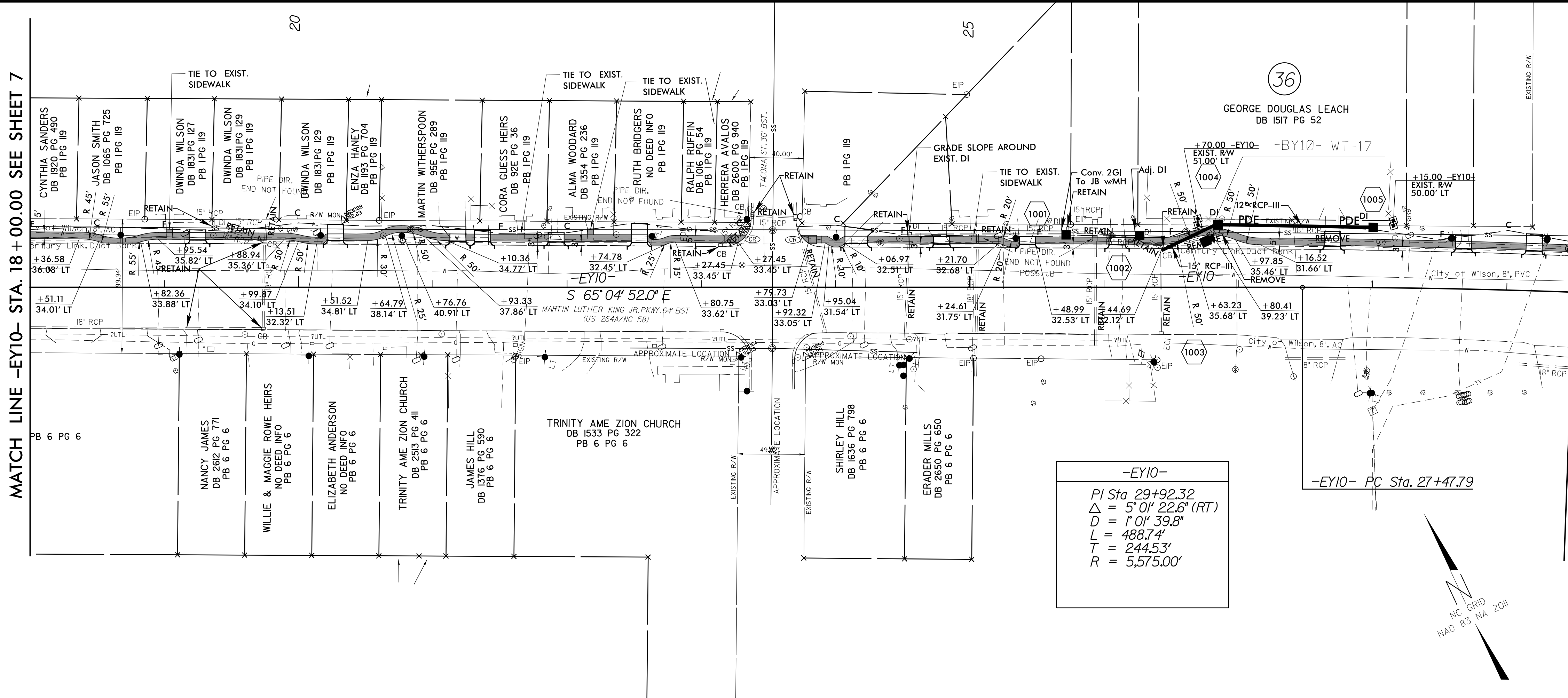
8/17/19

11-11-2017 14:24
S:\11-5935_RDY_SHT_10.dgn
333055744

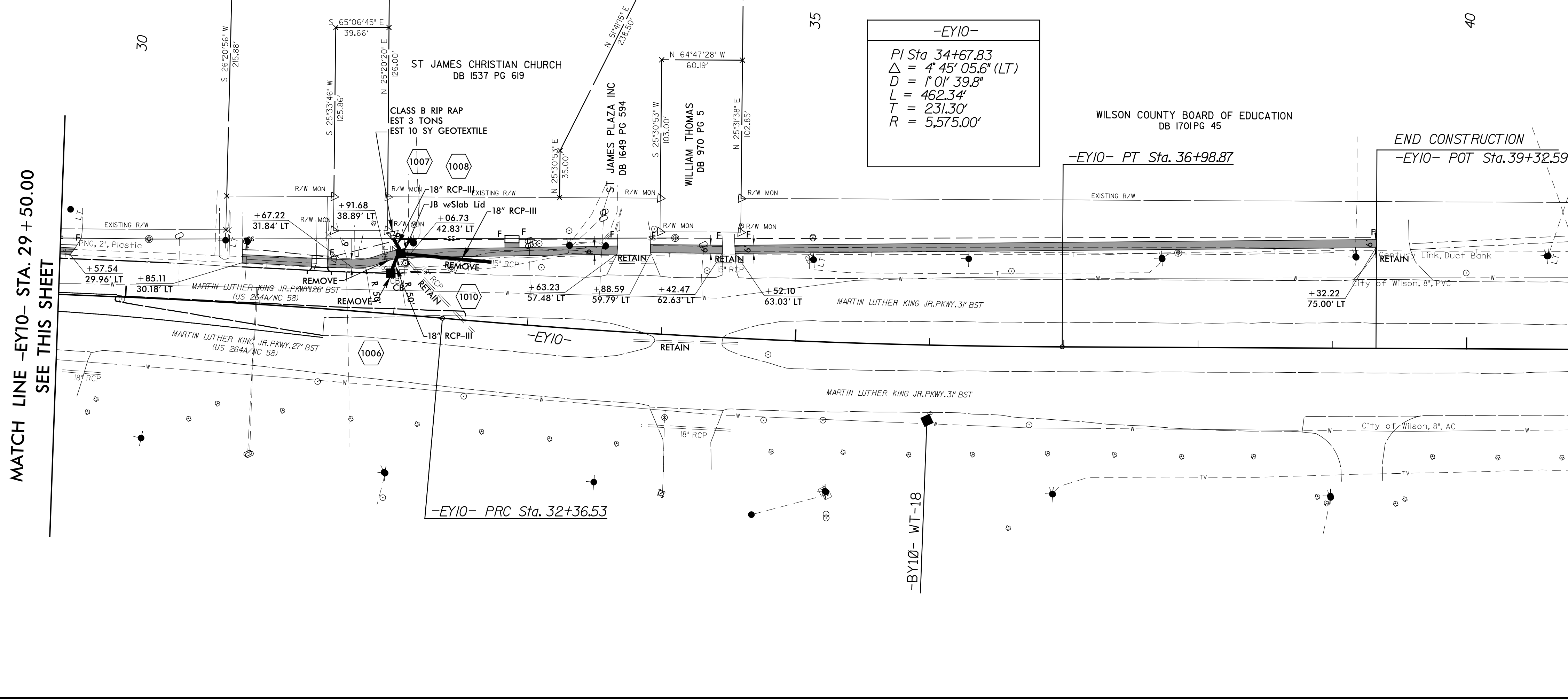
MATCH LINE -EY10- STA. 18 + 00.00 SEE SHEET 7

MATCH LINE -EY10- STA. 29 + 50.00 SEE THIS SHEET

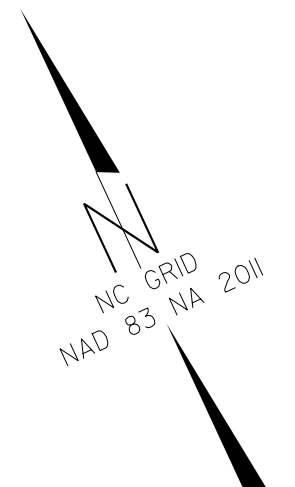
MATCH LINE -EY10- STA. 29 + 50.00 SEE THIS SHEET



-EY10-
 $PI\ Sta\ 29+92.32$
 $\Delta = 5^{\circ}01'22.6''(RT)$
 $D = 1^{\circ}01'39.8''$
 $L = 488.74'$
 $T = 244.53'$
 $R = 5,575.00'$



-EY10-
 $PI\ Sta\ 34+67.83$
 $\Delta = 4^{\circ}45'05.6''(LT)$
 $D = 1^{\circ}01'39.8''$
 $L = 462.34'$
 $T = 231.30'$
 $R = 5,575.00'$



PROJECT REFERENCE NO. U-5935	SHEET NO. 10
RW SHEET NO.	
ROADWAY DESIGN ENGINEER Michael Baker Engineering, Inc.	HYDRAULICS ENGINEER Michael Baker Engineering, Inc.
DOCUMENT NOT CONSIDERED FINAL UNLESS ALL SIGNATURES COMPLETED	
Michael Baker Engineering, Inc. 5000 Regency Place Charlotte, NC 27518 Phone: (704) 545-5000 Fax: (704) 545-5001 www.mbakercorp.com	ECOLOGICAL ENGINEERING 1155 S. College Parkway Suite 110 Charlotte, NC 27518 Phone: (704) 557-0929